

# Over the tee cup

There are some special activities to note at the Willow Creek Country Club. First, this coming Saturday will be a work day to paint the cart house and give the storage building another coat of paint. Bring your brushes or rollers. There will be a director's meeting on Wednesday, Sept. 29 at 8 p.m. at the clubhouse.

The last barbecue of the season will be held on Oct. 3, 4 p.m. The barbecue held last Sunday was greatly enjoyed by those participating and the weather was perfect for the event. The men and women teamed up for a round of golf and winners included Lois Hunt and Neil Parks with low gross and Sharon Harrison

and Dean Hunt for high gross. Everyone welcomes the Robert Harrisons to the ranks of local golfers.

In Sunday morning men's play John Edmundson shot a 28 the second nine to win low gross with a 84. Archie Munkers shot a 50 for low net and C.C. Carmichael had least putts at 28. KP was won by

Francis Doherty and John Edmundson also had long drive.

There have been many questions about what's behind the green door on the cart house but more curiosity is aroused about what happened on the back side of the building. Perhaps Judge can answer that.

## Boardman golfers win tourney

Two Boardman golfers, Art Clough and Bud Philippi joined forces last week to sweep through opponents for the championship of the 1976 West Wind Invitational at Wilson's Willow Run Executive golf course in Boardman.

More than \$900 was paid off to the competitors. Clough and Philippi, with their 58 total, picked up \$200 for their day's work.

The tourney was split into morning and afternoon competition.

The morning winners were: Brian Wilkens, Ernie Campbell, Boardman, first at 58½; Ron Daniels, Carroll Donovan Boardman, second at 58¾; third went to Wayne Kuhn and Ron Flug, Boardman, at 60. Ed Kuhn, Del Ball were fourth at 60¼ tied with Carrol Wilkens, Les Grant, also of Boardman.

In the morning putting competition, Russell Phillips of The Dalles was first. The best morn four-some was Ed Kuhn, Del Ball, Russel Phillips and

Allen Phillips.

Clough and Philippi won the afternoon action, followed by Paul Donovan, Dale Bloxom, Pendleton, second at 58¾; Gene Trumbell, Treve Gray, Pendleton, third at 59¼; and fourth, Tony Foote, Larry Quackenbush at 60¼.

Putting went to Heppner's Dave Harrison. The afternoon's best foursome was Trumbell, Gray, Gray and Jim Stanton.

Closest to the pin honors went to Mike Boylen and John

Kottcamp in the morning and Jim Stanton, Ron Gray in the afternoon.

Irrigon winners in the Punt, Pass and Kick contest, held in Hermiston Saturday were Brian Byrd first place in the 8 year division; Larry Wilson second place in the 13 year division. Rick Jones of Hermiston won first place in the 13 year division.

# Public Notice

(cont. from pg. 8)

General Tire Service, tires	184.69
B & C Parts, repairs	191.27
Columbia Basin Elec, misc.	10.00
Rentex Services, supplies	59.82
Case Furniture, repairs	15.00
Local Gov. Per. Ins., overtime	168.75
Gontys, supplies	18.95
Reeds Mobil, repairs	3.95
Heppner Auto Parts, repairs	735.56
Heppner Nor-Gas, parks 85.00, gas 27.63	112.63
Green Feed Store, supplies	5.29
Arrow Trans. Co., fr. on asphalt	2,634.60
Grays Repair Shop, gas & oil	39.02
C.O.W.S., gas & oil	13.59
Union Oil Co., gas & oil	1,650.23
Gardner's Men's Wear, parks	77.98
Cal's Arco, repairs	3.00
Pac. NW Bell, misc.	38.50
Anderson, Perry & Assoc., misc.	236.52
Coast to Coast, parks	76.66
Standard Oil Co., gas & oil	136.92
Col. Basin Elec., misc.	10.00
Murray's Drug, misc.	7.08
Chevron Asphalt Co., rd. materials	18,494.30
Rentex Serv. Corp, shop supplies	78.10
MCGG, parks	57.70
Pac. NW Bell, misc.	10.76
Pac. NW Bell, misc.	72.09
L.W. Vail Co., materials	203.83
Dobyns Pest Control, weed chemicals	462.75
Labor	8,361.64
The Bankers Life, ins.	54.69
Assoc. of Ore. Co., ins.	56.10
Standard Ins. Co., ins.	34.32
Pub. Emp. Ret. Br., sal 656.81, ss 656.81	1,313.62
First National Bank, sal.	1,160.70

Morrow Co. Emp. Union, sal.	48.00
St. Dept. of Revenue, sal.	436.00
St. Accident Ins., sal 17.92, ins. 702.83	720.83
Pac. Mutual Life, sal.	425.67

**Fri. & Sat. Sept. 24 & 25**  
**Live Music--Country Western**  
**Allen Frank & his Pilot Rock Band**  
 Dancing from 9pm to 2am

**Saturday night special**  
 Dinner steak \$3.95 6 to 9 pm

**Salad bar available**  
 7 nights a week

**Sunday Special**  
 Honey Buttered Chicken \$2.25  
 Chicken Fried Steak \$2.50



**Heading for Beechers**

# OUTDOORSMAN Special!



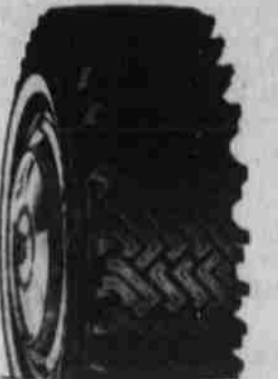
Be prepared for a great hunting season with quality automotive equipment at BARGAIN PRICES!

## Special Close Out Prices

9-650 x 16 Farm Mkt	35.67	29.40
10-650 x 16 S Cargo Carrier	35.90	29.60
4-650 x 16 Country Squire	45.80	38.40
6-600 x 16 Country Squire	40.11	34.00
10-600 x 16 Farm Mkt	28.82	24.50
3-670 x 15 H. Miler Com.	40.10	32.75
6-670 x 15 Sure Grip	42.20	35.00
13-650 x 16 Sure Grip	46.75	37.40

Ask Salesman for Prices on other sizes

## BELTED CO-OP COUNTRY SQUIRE 120



FOR MUD OR SNOW

Passenger car Traction Tire. Scores heavily on safety and long mileage. Two plus two Dynacor construction delivers greater stability.

White Sidewall!

REG.	SIZE	TRADE-IN	SALE	TAX
B78x13	\$30.77	\$28.11	\$1.82	
B78x14	32.74	29.90	1.98	
E78x14	36.05	32.92	2.27	
F78x14	37.60	34.33	2.43	
G78x14	38.81	35.44	2.60	
H78x14	42.13	38.45	2.83	
F78x15	38.98	35.59	2.54	
G78x15	40.19	36.70	2.65	
H78x15	43.33	39.57	2.87	
J78x15	44.53	40.65	3.03	
L78x15	46.59	42.53	3.14	

## CO-OP BATTERIES 12 VOLT

The perfect battery for extremes in temperatures. More reserve capacity, more cranking power, more starting power. All three carry a 60 month guarantee or ½ when used commercially.

DR 24 Reg. Exch. \$42.31 **\$37.79**

DR 27 Reg. Exch. \$46.37 **\$41.42**

DR 74 WITH SIDE TERMINALS Reg. Exch. \$43.37 **\$38.73**



**STARTING FLUID**  
 7% OZ. Designed for tractor use.  
 Reg. \$1.35 **\$1.21**

11-oz. All purpose spray.  
 Reg. \$1.39 **\$1.25**

**WINDSHIELD WASHER ANTI-FREEZE**  
 12-oz. Reg. \$1.42 **\$1.14**

Keeps windshields clean without danger to car finish.

**GASLINE ANTI-FREEZE**  
 12-oz. Reg. \$3.72 **58¢**

Prevents fuel system freeze-ups, stalling, carburetor icing.

**SPRAY DE-ICER**  
 12-oz. Reg. \$1.75 **\$1.37**

Melts frost and snow without gummy film.

**PACIFIC PERMANENT ANTI-FREEZE**  
 and summer coolant

1 GAL. **\$3.75**  
 Reg. \$4.00

# Special! CB RADIOS

23 CHANNEL  
 Kraco communication units reflect the highest degree of technical excellence and superior craftsmanship. Innovative techniques assure you of the best possible performance and reliability. All units protected with 90 day repair or replacement warranty.

**COMPACT 2310** Reg. \$99.95 **\$97.76**

**DELUXE 2320** Reg. \$152.24 **\$125.76**

**SUPER DELUXE 2330** Reg. \$179.12 **\$152.76**

**BASE STATION 2345** Reg. \$218.68 **\$193.76**

## TANGLE-PROOF BOOSTER CABLES

A "must" for starting stalled automatic transmission cars.

8-ga. Reg. \$5.25 **\$4.37**

6-ga. with H.D. clamps Reg. \$9.60 **\$7.45**

## NATIONAL SPENCER ALL STEEL BARREL PUMP

Steel construction, zinc plated, 1½" & 2" thread base, fits most 15-55 gal. drums. Pumps approx. 1 pt. per stroke of SAE 30 oil. Self priming & vented.

Reg. \$9.49 **\$8.76**

**GAS & WATER CANS**  
**Blitz Water Can G.I. Jeep Can**

Rugged 20-gauge steel container for cold or hot liquids up to 350°. Use for coffee, soup, etc. Non-toxic interior coating.

Holds 5 gallons of fuel plus necessary oil for 2 cycle engine fuel mixture. Don't risk getting caught short miles from a fuel source!

**\$7.76** Reg. \$9.29 **\$11.76** Reg. \$13.95

# Morrow County Grain Growers INC.

989-8221

LEXINGTON

