

LEGAL

NOTICES

FEBRUARY, 1976

John & Mildred Hanna, material (1975)	100.00
Maeva Ruhl, material (1975)	350.00
Gazette-Times, misc.	38.25
The Bankers Life, ins.	65.80
Standard Oil Co., gas & oil	27.78
Pendleton-Heppner Freight, supplies	18.78
Big Sky Maps, misc.	214.50
BankAmericard, misc.	9.14
Assoc. of Ore. Co., Ins.	51.00
Blue Cross, sal 26.40, ins. 44.10	70.50
Pacific NW Life, Sal.	29.10
Wheeler's, misc.	75.00
National Products Co., parks	107.00
Arco, gas & oil	44.00
Green Feed Store, repairs	14.93
General Fire Equip, misc.	11.80
Harley Motor, repairs	5.08
Stone Machinery, repairs	583.96
General Tire, tires	90.18
City of Heppner, misc.	6.40
James Scarborough, repairs	221.58
Evans Lumber Yard, materials	27.98
Springbok Chemical Co., weed chemicals	2,948.00
Murray Drug, misc.	48.50
Columbia Basin, misc. 75.70, parks 16.00	91.70
Pendleton Glass, Inc., repairs	145.84
Union Oil Co., gas & oil	315.06
C.O.W.S., repairs 250.30, material 272.91	523.21
Frontier Auto Parts, materials	172.90
MCGG, repairs	125.65
Pacific NW Bell, misc.	10.76
Heppner Auto Parts, materials	342.45
Columbia Basin Elec., misc.	10.00
Blue Cross, Sal. 43.40, ins. 446.50	489.90
Blue Cross, Sal. 10.85, ins. 53.50	63.45
Morrow Co. Emp. Union, Sal.	11.28
Public Emp. Ret. Board, Sal 322.40, SS 322.40	644.80
First National Bank, Sal	370.30
St. Dept. of Revenue, Sal.	149.00
Pacific Mutual Life, Sal.	149.09
Labor	4,393.35

Ernest Jorgensen, JP phone 32.29, sup 43.94	76.23
Blue Cross of Ore, sal 385.05, ins. 530.25	915.30
Paul W. Jones, Co. Ct. exp	46.38
Pacific N.W. Life, Sal.	59.40
Pettyjohns, Assessors field work	68.00
MCGG, sheriffs car exp.	29.59
Texaco, Inc. sheriffs car exp.	1.80
Shell Oil Co., sheriffs car exp.	12.61
N.W. Law Enforcement, sheriffs ofse sup.	279.69
BankAmericard, sheriffs meals	11.00
Bills Body Shop, sheriffs car exp.	12.00
Clifford Morris, sheriffs car exp. 25.30, Uniform, Nov, Dec, Jan. 24.00	49.30
Richard Mahar, uniform, Nov, Dec, Jan.	24.00
Larry D. Fetsch, uniform, Nov, Dec, Jan.	24.00
Murray's Drugs, Assessors ofse sup	14.26
Jaynes, supplies Juv. 7.92, Co. Ct. 8.18, Planner 25.20, Mach. mtse 24.70	66.00
Gazette-off pub. 164.80, Assessors ofse sup 59.05, Planners printing 37.75	261.60
Coast to Coast, sup: museum 1.49, ctise 27.16, Assessors field 7.97	36.62
Columbia Basin Elec, ctise power	154.67
Knights Katering, Inc., N end office	400.00
Feb & Mar	
Wagon Wheel Cafe, Cir. Ct. 21.75, Co. Ct. 64.05, sheriffs jail exp 58.10	143.90
Addressograph Mult., mach mtse	284.00
Rentex Corp. ctise sup.	12.38
Public Welfare, S. food	5.28
Morrow Co. Chamber, Co. Ct. exp.	105.00
Dept. of Revenue, Ind. App. 585.75, Assessors St. mdse 107.60	693.35
Court St. Market, ctise sup.	16.65
City of Heppner, ctise sup.	10.75
Wheeler's, sheriffs comm.	75.00
National Products Co., ctise sup.	73.25
Atlantic Richfield, Co. Ct. exp.	31.50
Albert Otte, mach, mdse	54.50
Pac. NW Bell, sheriffs comm.	5.37
Wasco County, sheriffs jail exp.	292.50
Pac. NW Bell, sheriffs comm.	117.00
City of Hermiston, sheriffs jail exp.	72.00
Murray's Drug, Juv. sup 1.70, sheriffs ofse sup 39.51	41.21
Union Oil Co., sheriffs car 435.05, ctise fuel 324.37, Planner 26.68, Assessors field 16.48, Juv. 29.59	832.17
Pac. NW Bell, sheriffs comm.	14.50
Robert Abrams, Sp. Atty Fund	176.58
Kilham, clerks sup.	17.41
Singer Company, Treas. new calculator	300.00
Standard Office Supply, JPS supplies	8.39
East Central Ore Assoc. ECOAC fund	917.00
Secretary of State, elections	10.00
Charles Patching, Assessors field work	21.25
Dunham Printing, election supplies	51.75
Gene Allen, et al, Cir. Ct. jury	447.52
Morrow Co. Emp. Local, Sal.	32.50
St. Dept. of Revenue, Sal.	852.00
First National Bank, Sal.	2,133.50
Pub. Empl. Ret. Br., Sal 1175.04, SS 1175.04	2,350.08
Pac. Mutual Life Ins., Sal.	810.83
St. Accident Ins., Sal. 62.96, ins. 50.90	113.86
Hubert Wilson, PM, postage	200.00
Rohrman Motor Co., sheriffs car exp.	77.70
Heppner Auto Parts, sheriffs car exp.	8.49
Moore's Texaco, Sheriffs car exp.	12.94
Carolyn Davis, Juv. dept travel	19.04
Everett Harshman, Assessors conv. exp.	107.44
Assoc. of Oregon Co., Ins.	137.70
Ford Motor Credit Co., Sheriffs pickup rental	136.36
Dunham Printing Co., Assessors ofse sup.	12.00
The Bankers Life, Ins.	98.02
BankAmericard, Co. Ct. travel 31.35, Juv. travel 5.70, Planner travel 18.00	55.05
Dennis Doherty, DA Secy 340.00, phone 82.16, sup 22.00, Prof. ser 175.25, rent 125.00, copies 33.00	777.41
Central Market, ctise sup.	34.69
Assoc. of Ore. Counties, Co. Ct. AOC fund	1,030.00
BankAmericard, Planner travel	2.00
Green Feed Store, ctise sup.	8.50
Robert Abrams, Sp. Atty fund	637.00
Heppner Garbage, ctise sup.	14.00
Columbia Basin, museum 71.68, sheriffs comm. 69.82	141.50
William Bridges, Cir. Ct.	14.40
Pat Wright, H. dept. travel	73.21
Public Welfare Div., S. Food	4.34

SAMPLE BALLOT

To be torn off by a member of the election board Ballot No. _____

OFFICIAL BALLOT
MORROW COUNTY SCHOOL DISTRICT NO. 1, MORROW COUNTY, OREGON
TAX LEVY OUTSIDE THE CONSTITUTIONAL LIMITATION
TUESDAY, APRIL 20, 1976
Polls Open 8:00 A.M. to 8:00 P.M.

The voter shall place an (X) or check mark (✓) in the voting square before the word YES or the word NO, whichever indicates his choice.

PROPOSAL
Shall the Board of Directors of Morrow County School District No. 1, Morrow County, Oregon, be authorized to levy for the fiscal year 1976-77 the sum of \$1,421,549 outside the limitation set forth in Section 11, Article II of the Oregon Constitution.

EXPLANATION OF BALLOT QUESTION
Without the approval of the voters the school board has authority to levy only the tax base of the district, which is \$466,157. This sum, together with available non tax revenues, is not adequate to meet the operating needs of the schools.

Because the tax base is inadequate it is necessary to submit to the voters, on an annual basis, a tax levy request in excess of the tax base. The tax base would not be sufficient to operate schools for a full school year.

If approved, the operating budget to be financed by local taxes for the year 1976-77 will be \$122,849 greater than for the preceding year.

Reasons for increasing the levy are: Increases in salaries, Social Security, Retirement, Workers' Compensation, costs of textbooks and supplies, contracted services and materials necessary for school operation. The increase also provides for additional student enrollments.

- YES, I vote for the tax levy
- NO, I vote against the levy

SAMPLE BALLOT

To be torn off by the Receiving Clerk of the Election Board Ballot No. _____

OFFICIAL BALLOT
MORROW COUNTY SCHOOL DISTRICT NO. 1, MORROW COUNTY, OREGON
ELECTION OF SCHOOL DISTRICT ADVISORY COMMITTEE MEMBERS
POLL OPEN 8:00 A.M. to 8:00 P.M.
TUESDAY, APRIL 20, 1976

The voter shall place an (X) or check mark (✓) in the voting square before the name of the candidate. Vote for one candidate, unless otherwise specified, in each zone where there is a vacancy.

ZONE I - BOARDMAN 2 YEAR TERM VOTE FOR ONE
1. Kenneth Broadbent

ZONE II - IRRIGAN 4 YEAR TERM VOTE FOR ONE
2. John Matthews

ZONE V - HEPPNER RURAL 4 YEAR TERM VOTE FOR ONE
3. Holly Becket
4. Jean Bennett
5. Rita Sumner

ZONE VI - HEPPNER CITY 4 YEAR TERM VOTE FOR ONE
6. Dave Eskman, Sr.
7. Gail Hughes
8. Nanta Stoney
9. Hubert Wilson
10. Pauline Winter

SAMPLE BALLOT

To be torn off by the Receiving Clerk of the Election Board Ballot No. _____

OFFICIAL BALLOT
MORROW COUNTY SCHOOL DISTRICT NO. 1, MORROW COUNTY, OREGON
ELECTION OF SCHOOL DISTRICT ADVISORY COMMITTEE MEMBERS
POLL OPEN 8:00 A.M. to 8:00 P.M.
TUESDAY, APRIL 20, 1976

The voter shall place an (X) or check mark (✓) in the voting square before the name of the candidate. Vote for one candidate, unless otherwise specified, in each zone where there is a vacancy.

FOR ELECTION OF SCHOOL DISTRICT ADVISORY COMMITTEE MEMBERS
BOARDMAN-IRRIGAN ADVISORY COMMITTEE THREE YEAR TERM VOTE FOR ONE
11. Barbara Hug

BOARDMAN-IRRIGAN ADVISORY COMMITTEE TWO YEAR TERM VOTE FOR ONE
12. Carl Trubee

BOARDMAN-IRRIGAN ADVISORY COMMITTEE THREE YEAR TERM VOTE FOR ONE
13. Burrell Cooley

SAMPLE BALLOT

To be torn off by the Receiving Clerk of the Election Board Ballot No. _____

OFFICIAL BALLOT
MORROW COUNTY SCHOOL DISTRICT NO. 1, MORROW COUNTY, OREGON
ELECTION OF SCHOOL DISTRICT ADVISORY COMMITTEE MEMBERS
POLL OPEN 8:00 A.M. to 8:00 P.M.
TUESDAY, APRIL 20, 1976

FOR ELECTION OF IONE SCHOOL ADVISORY COMMITTEE MEMBERS
THREE YEAR TERMS VOTE FOR TWO
14. Harold Holtz

15. L.J. McElligott
16. Sandra Murray

SAMPLE BALLOT

To be torn off by the Receiving Clerk of the Election Board Ballot No. _____

OFFICIAL BALLOT
MORROW COUNTY SCHOOL DISTRICT NO. 1, MORROW COUNTY, OREGON
ELECTION OF SCHOOL DISTRICT ADVISORY COMMITTEE MEMBERS
POLL OPEN 8:00 A.M. to 8:00 P.M.
TUESDAY, APRIL 20, 1976

FOR ELECTION OF IONE SCHOOL ADVISORY COMMITTEE MEMBERS
THREE YEAR TERMS VOTE FOR TWO
14. Harold Holtz

15. L.J. McElligott
16. Sandra Murray

FOR ELECTION OF HEPPNER SCHOOL ADVISORY COMMITTEE MEMBERS
THREE YEAR TERMS VOTE FOR TWO
17. Jerry Dougherty

18. David McLeod
19. Dean Wright

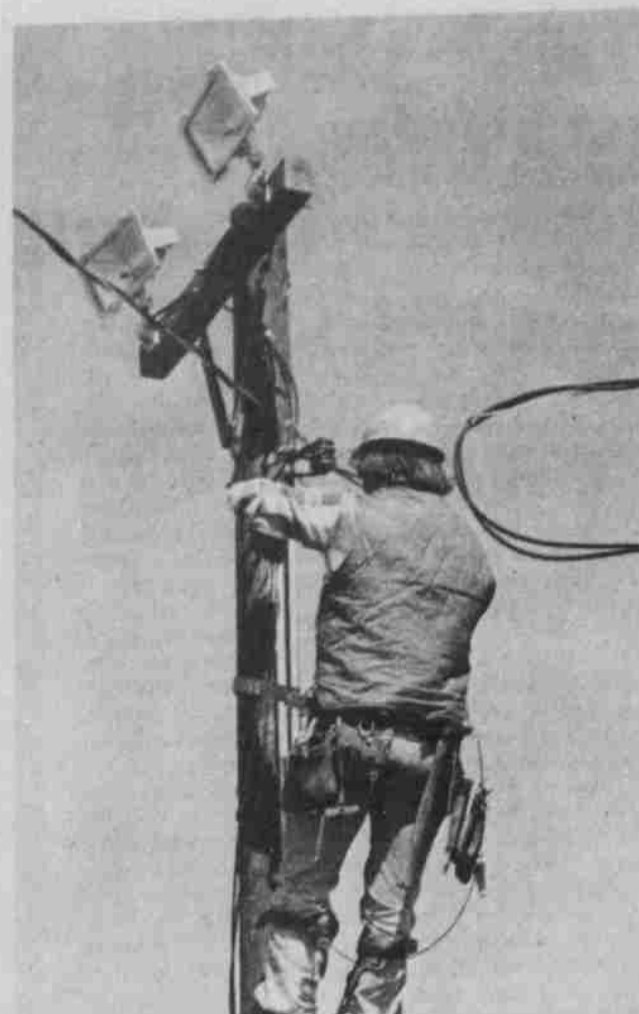
SAMPLE BALLOT

To be torn off by the Receiving Clerk of the Election Board Ballot No. _____

OFFICIAL BALLOT
MORROW COUNTY SCHOOL DISTRICT NO. 1, MORROW COUNTY, OREGON
ELECTION OF SCHOOL DISTRICT ADVISORY COMMITTEE MEMBERS
POLL OPEN 8:00 A.M. to 8:00 P.M.
TUESDAY, APRIL 20, 1976

FOR ELECTION OF HEPPNER SCHOOL ADVISORY COMMITTEE MEMBERS
THREE YEAR TERMS VOTE FOR TWO
17. Jerry Dougherty

18. David McLeod
19. Dean Wright



Grant Weatherford, Columbia Basin employee puts the final touches on the new lighting system for the tennis courts in Heppner. The project was sponsored by the Heppner Lions Club.

The tennis courts at Heppner Elementary School have been lighted for evening use. The Heppner Lions Club instigated project through the work, cooperation and financial assistance of various other community groups, businesses and individuals, has become a reality as of last Thursday.

The facility promises to be the bright spot of the community, with an emphasis on activity and youth. It has been in use every evening since installation. The newly setup B.M.C.C. tennis classes will be making use of it immediately.

The four baskets mounted on the court are also working over time since the lights have extended available playing time.

Those contributing to the installation include Columbia Basin Coop, Lott's Electric, Odd Fellows Lodge, Elks Lodge, Soroptimists, Chamber of Commerce, the Heppner Elementary Student Body, Heppner High Student Body, Willow Creek Golf Course, Ione Lions Club, Coast to Coast, Heppner High Girls Athletic Association and Morrow County School District.

To better serve our customers

Morrow County Grain Growers

is offering

ON THE FARM TIRE SERVICE

Complete with Hoist, Compressor and calcium chloride Pump.

We will be able to handle any tire trouble, either on the road or at the ranch.

★ Just Arrived ★
1 H C NO. 80, 10 1/2 ft.
Center drive rod weeders



Morrow County Grain Growers INC.

Your Friendly Local Cooperative
Lexington, Oregon

