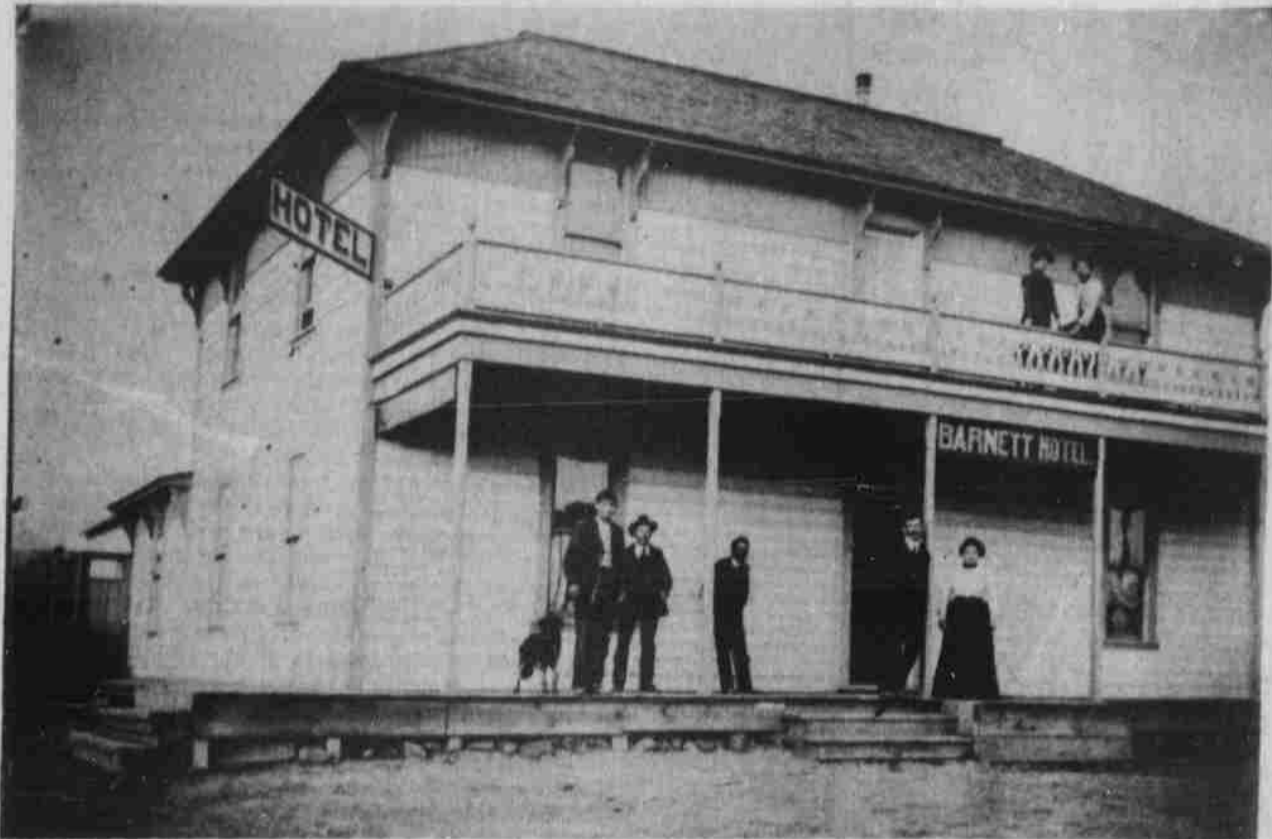


## Ullman in keynote address



The Barnett Hotel stood on the corner of Main and C Streets, Lexington, OR. On the steps are Ruth and Charles Barnett, while the woman standing at the left on the balcony is Claudia Winsom. Mrs. Eliza Beymer purchased the hotel in 1903 and renamed it Hotel Lexington. The building presently houses Del's Market. Picture was taken before 1906. (Courtesy of the Morrow County Museum)

Oregon Congressman Al Ullman was the keynote speaker at the dedication ceremonies which included the dedication of the Port of Morrow's \$1.5 million water supply and sewer treatment system and the recently completed Gourmet Foods Inc., potato processing plant, Boardman, Saturday.

"We are dedicating here today a product of a series of events, both for private industry and a new way of life in Oregon," said Ullman.

He continued, "As we look over this beautiful country, we are thrilled at the sight of circles and the pumping facilities."

He called the Boardman area, "One of the most dynamic areas in the world today." He also stated that he was totally dedicated to the proposed construction of the Alumax plant and the nuclear power plant. He stated "New industry will bring problems to this area, however, with the proper management and planning the people of Oregon will be able to cope with the problems and preserve what they now have and keep the natural beauty of Oregon."

He praised the Gourmet plant and the Port of Morrow's food processing park as an example of cooperation and coordination between different agencies working together.

"Today's high interest rates are hindering future expansion," said Ullman, "and private industry can't do anything until we get back to sound interest rates."

He also stated that environmental regulations can cause problems for growth, and Congress will have to look at them and do some correcting. "In some cases we moved too far, and there is a need for reasonable regulations," he said.

Ullman stated he represents one of the largest and the most beautiful districts in Congress and he expects to see more and more development in his district. "After all isn't this what America is all about," he concluded.

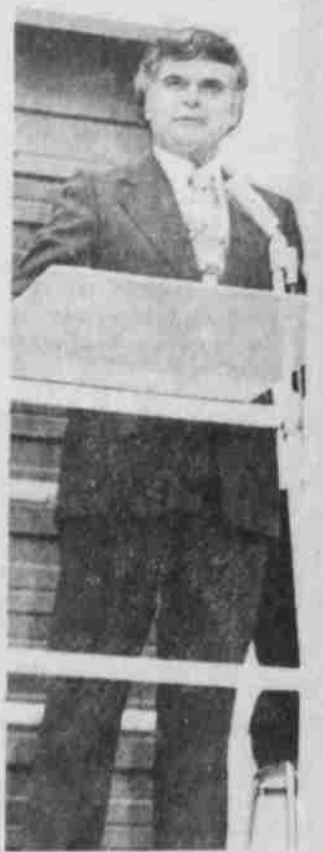
Norman Hyder, president of Gourmet Foods Inc., who acted as the emcee of the dedication program, paid tribute to the late Garland Swanson, who was the chairman of the Port of Morrow.

He stated, "A few years ago the drop in potato production prompted us to explore the Boardman area. We saw the potential of this area and it looked like the place to expand."

"The climate and the soils are not only suited for potato production, but it has the longest period for out-of-field processing in the entire country, an average of 100 days per year. All of the potatoes processed at the Boardman plant are produced on farms in the general area, from both sides of the Columbia River."

Projection for this year's crop is about 72 million pounds of product. The huge sub-freezer storage which is part of the plant has a capacity of 8-1/2 million pounds of finished product. The ultra modern processing facility was designed to process and freeze up to 100 million pounds of french fries and hash brown potatoes per year.

Port of Morrow president Oscar Peterson, Ione, praised Ullman for his help in starting the Port of Morrow in 1965. Peterson said, "Ullman saw the need to develop a site for industrial work."



ALL ULLMAN

# THE GAZETTE-TIMES

Vol. 92, No. 35

Heppner, OR, Oct. 16, 1975

15c

## Wheat growers to hold meeting

The annual fall meeting of the Morrow County Wheat Growers League will be held Thursday, Oct. 16, 1975, at the Lone Grange Hall, Ione.

The committee meetings will be held from 2-5 p.m. at the Grange Hall. The dinner will begin at 6 p.m.

Mr. Matt Kolding, Feed Grain Researcher from the Columbia Basin Research

Center, Pendleton will be the principal speaker.

The dinner will cost \$1.50 per person with the remaining cost provided by the Oregon Wheat League, and will be served by the Lone Grange Auxiliary.

This is our opportunity to have a say in the resolutions and programs for the Oregon Wheat League.

## Co op board opposes welfare rates

The Board of Directors of Columbia Basin Electric Coop went on record as being opposed to "social welfare" rates.

The concern of the board is the rates and policies should reflect the cost of service to classes of consumers such as small business consumers, residential consumers, irrigation consumers and large business consumers.

Some Public Utility Commissions and some groups of

consumers have expressed feelings that utility rate structures should provide subsidies to certain low income groups.

Two years ago, the Columbia Basin Electric Coop studied low usage levels and minimum usage levels to determine the effects of an increase in rate at these levels. It was determined that revisions in low usage areas of the rate structure had very little effect on older age members or lower income members.

The Board passed the following resolution at their September Board Meeting:

**Resolution**  
Utility Rate Design  
Certain groups of the public are requesting that utility rate structures be designed to bring about conservation of energy resources and accomplishment of social welfare goals.

We agree that new concepts in rate design and company policies should be studied and implemented as appropriate to assure that there is no discrimination of costs within and between classes of customers and our members.

We believe, however, that attempts by utilities to achieve income redistribution

through arbitrary pricing of electricity is inappropriate, and such social programs must be the functions of proper social agencies; and that electric rates and policies must be fairly based on the costs of service to classes of consumers and members.

We believe electric systems should review their costs and methods of allocation of such costs to assure that rates and policies are, as closely as practicable, in accordance with costs of service to each customer class.

We further believe that utility price subsidies for any class of customers through rate design and policy are improper; and if subsidies for low income people are required they should be programs for food and health services to those persons identified as requiring assistance.

The Board felt the monkeying with rates to utilize income status for ability to pay electric costs could only result in higher record keeping costs and higher administrative costs of the Cooperative.

### NOTICE

The regular monthly meeting of the Morrow County School Board will be held Monday, Oct. 20, at the A.C. Houghton School, Irrigon, 7:30 p.m.

## Rodeo court selected

Members of the Morrow County Rodeo Board recently selected Patricia Van Schoiack as the 1976 Fair and Rodeo queen. Sunday, members of the board selected the princesses to round out the court.

Princesses selected to serve on the 1976 court are Kate Evans, Tami Ottmar, Janice Spaulding and Kimee Hague-wood.

Kate Evans, 16, is the daughter of Mr. and Mrs. Vern Evans, Irrigon. She is a junior at Riverside High School and enjoys swimming and sewing as her hobbies.

Tami Ottmar, 17, is the daughter of Mr. and Mrs. Ray Alsop, Boardman. Tami is a junior at Riverside High School and lists sewing and 4-H as her hobbies.

Janice Spaulding, 16, is the daughter of Mr. and Mrs. Carl Spaulding Jr., Heppner. She is a junior at Heppner High School and says her hobbies are drawing, macrame and bike riding.

Kimee Haguewood, 17, is the daughter of Mr. and Mrs. Ron Haguewood, Heppner. She is a senior at Heppner High School and enjoys swimming and sewing.

## New maps of cities available

A revision of the city maps of ten Oregon Communities has just been completed by the State Highway Division in cooperation with the Federal Highway Administration, it was announced by Fred B. Klabe, administrator.

The communities affected are Echo, Elkton, Heppner, Jefferson, Juniper, Myrtle Point, Powers, Sodaville, Tillamook and Yachats.

These maps are drawn to a scale of 800 feet to the inch and are plotted on a 17-inch by 19-inch sheet and sell for 30 cents per sheet. Reductions of these sheets to size 8 1/2 in. by 11-inch at a scale of 1,600 feet to the inch are available at 10 cents per sheet.

The cost of the map of a particular city may be determined by multiplying the number of sheets indicated for that city by either 30 cents or 10 cents, depending on the size of the map desired. All of the communities listed are single sheets.

These maps may be purchased by writing to the Photocopy and Map Distribution Unit, Room 17, State Highway Building, Salem, 97310. Checks should be made payable to the Oregon State Highway Division.

## PNB offering phones for sale

For the first time in its history, PNB is offering telephones for sale, says Pacific Northwest Bell manager Dale Slusher.

Not just any old telephones, though. A selection of ten new

### Weather brings fire relief

Oregon's typical fall, rainy weather has finally relieved fire conditions throughout the state. The rains come as a welcome relief to Dept. of Forestry fire fighters after one of the driest Septembers on record.

The weather has resulted in the removal of many forest use restrictions throughout the state. Fire season has been officially over as of 12:01 a.m., Oct. 9, in Benton, Clatsop, Clackamas, Columbia, Lane, Lincoln, Linn, Marion, Multnomah, Polk, Tillamook, Washington and Yamhill counties.

Oregon's fire record on state and private lands this season has been excellent. The 1,360 fires reported is just slightly above average. The 3,270 acres burned is half of the 5-year average.

instruments, called "Design Line", combines old-fashioned glamour with new-as-tomorrow efficiency.

The new collection of decorator telephones includes sleek low-profile sets with leather and metal trims, an elegant ivory and gold "French phone", hide-away sets in carved wooden boxes and an old favorite of the 1920s—the candlestick with the separate receiver.

The candlestick in its reincarnated form is much more colorful than when grandpa had one on his desk. Instead of solid black, it now comes in red, white, or red-white-and-blue with stars and stripes. The housings, or shells, of the phones will become the property of the telephone customers who order them. The working parts remain the property—and the responsibility—of the company, explains Slusher.

All maintenance and repair of the equipment inside the housing will be done without charge by PNB.

### notice

The Heppner Band Parents will host a dinner prior to the Home-Coming game at the Heppner High School Cafeteria, Oct. 24.

## You're invited



you are cordially invited to attend the Retirement Dinner, honoring Dr. L.D. Tibbles, on Wednesday, Oct. 22, 1975, 7 p.m. at the Heppner High School Cafeteria.

Persons whose sur-names begin with A-M are requested to bring salads and persons whose names begin with N-Z are requested to bring desserts.



The 1976 Morrow County Fair and Rodeo queen and her court. From the left, Kate Evans, Janice Spaulding, Queen Patricia Van Schoiack, Kimee Haguewood and Tami Ottmar.