

BOARDMAN BEACON

VOL. 1, NO. 1

RICHARD HABERLACH, Editor

Desert Magic enters housing picture

Desert Magic, according to its president, Howard Kartchner, plans to enter the housing picture at Boardman as a means of insuring accommodations for farm workers on 40,000 acres of irrigated farmland which will be in production this year.

Desert Hills is the name of the corporation Kartchner has set up to handle the housing complex that will occupy 40 acres on the south edge of Boardman. It will contain a shopping center, three 50-unit

mobile home parks, a 150-unit mobile home estate which will be sold, a 60-unit apartment house and 60 acres to be subdivided into about 150 single family dwelling lots. Preliminary cost estimates for the project is \$3,136,000.

Construction may start in February, pending the approval of the DEQ and the ability of the Port of Morrow and City of Boardman to furnish adequate sewage disposal. Addition of a \$35,000 aerator at the sewer plant,

plus the ability of the port and city to arrange for \$152,000 to revamp the plant, will determine whether immediate construction begins.

Kartchner says Desert Magic's entrance into the housing business is to take care of the influx of workers needed for the corporation's giant potato and farming operation. He predicts that several thousand workers will come to northern Morrow County as a result of his corporation's operation, plus that of Gourmet Foods potato

processing plant and the PGE power plants scheduled for Boardman and Pebble Springs, regardless of whether the latter are nuclear or fossil fueled. The City of Boardman has been unable to provide mass housing facilities for a thousand workers expected in the area within the next two years.

As an indication of the economic impact of the new workers, it is estimated that they will have an annual income of \$8,000 to \$9,000 a

year. Frank Rogan, project engineer for Portland General Electric Company's giant power plants at the McCarty site at Boardman and at Pebble Springs, told Heppner business men last week that Morrow County's towns will

be counted upon to furnish facilities, such as housing, for an estimated 1,800 workers at the PGE project. Boardman has found difficulty in providing sewer, water and housing for the expected

number of workers until Desert Magic entered the housing picture. So far, Heppner has no prospect of furnishing needed facilities for expected workers at

Boardman projects, for those at the proposed power plants, for workers at the expanding Kinzua Corporation complex or for construction workers on Willow Creek Dam. However, the planning commission is now studying a proposal by Kinzua Corporation to build 26 single-unit dwellings and a

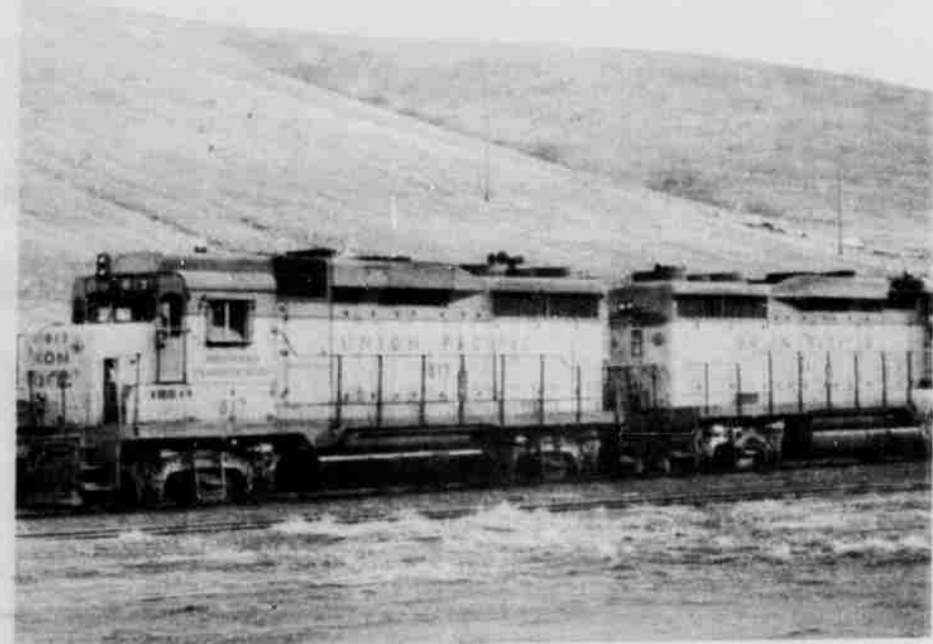
large apartment building on property above Pioneer Memorial Hospital.

This Kinzua may be placed in the same role Desert Magic has assumed at Boardman, of entering the housing picture in order to guarantee accommodations for its personnel.

Action by city planners on the Kinzua proposal is expected in a few days.

Allen Nistad of Kinzua said yesterday that his firm hopes to start development of the 16 acres above the hospital next

week, pending approval of local and federal agencies. Nistad also confirmed Kinzua's purchase of 1700 acres of land below the mill on Willow Creek known as the Michos place. The land was purchased Dec. 10 from the First National Bank of Oregon, Portland, at a cost of \$250,000. The corporation hopes to exchange the land for parcels adjacent to the mill. There are no plans for plant expansion or housing on this property, he said.



ENERGY CRISIS! These two Union Pacific diesel engines pulled into Heppner about 10 p.m. Monday night and went out of service, with the engines running. At three p.m. Tuesday the engines were still running, and hadn't been shut off during the almost 18-hour idle period, an observer reported.

Irrigon

2nd well outlook encouraging

The first council meeting of the year was held in the city service building, which has been equipped for use as a council meeting room with heat and facilities. Future meetings will be held in the same location, which is at the entrance of Ordnance Road on Highway 730, and known as the old Standard Station.

Chester Wilson was re-elected as mayor for his 12th term by a majority vote of the council. Vernon Stewart was elected mayor pro-tem. Mrs. Ted (Mary) Wilson was re-appointed as city recorder for the year by acclamation, with the entire council present.

A letter from the Portland District Corps of Engineers stated that the city's request for a site for sewage treatment plant was being given consideration along with other governmental unit requests.

Mayor Wilson reported that a call to the office of State Engineer Chris Wheeler has cleared some misunderstanding regarding rejection by his office of a permit for a second well. A sufficient amount of water is available from the present well, under the pumping conditions now in use, to meet the needs of expected normal growth for a number of years, if backed by an adequate storage supply.

Wheeler was also optimistic, although no guarantee was given that a second well might

be sunk near the same location and in the same water-bearing strata as a stand-by unit only in the event of pumping failure in the existing well.

The city's engineer's recommendation will be sought to determine if the need will outweigh the cost of a standby source and equipment.

An ordinance covering water line improvements and assessment costs was read and referred to the February meeting for passage.

Police Chief Perry Pummel was appointed to a County committee to evaluate County jail facilities under newly adopted legislation. Pummel also brought to the council's attention the need for a jury panel within the city.

The need for adoption of a building code, which would require permits for any type building, was discussed. The location of mobile homes should also require a permit. This will be discussed with the city attorney and will be on the agenda for February.

McCrae enters politics

Wallace McCrae, the only president Blue Mountain Community College ever had, will retire June 30, 1974.

He announced the end of a 40-year career in education in a meeting recently of college faculty, staff, and student leaders, plus representatives of the news media. He was accompanied by Bob Zerba, Athens, chairman of the college board of education.

A Republican, McCrae said he will file for the State Representative position to be vacated this year by Stafford Haisell, also a republican, from Hermiston.

McCrae was named president of Blue Mountain Community College in 1962 when the college was organized. At the time, he was superintendent of schools in Pendleton, a post he had held since 1949.

In more than 11 years of his administration, the college has grown from an initial enrollment of 231 vocational students to more than 3,000 students in the liberal arts, applied sciences, and evening programs. The full-time equivalent (FTE) enrollment last year was 1,128. An FTE is one student carrying 15 credit hours of study for three terms.

Zerba announced that the college board will meet soon to set plans in motion for selecting a replacement. He said college faculty, staff and students will be involved in the selection process.

The Rev. Duane Trulin, who is pastor of Christian Center in Yuba City, Ca., will minister at the Assembly of God in Irrigon, Tuesday through Friday and Sunday at 11 a.m. and 7 p.m. services. He will teach concerning the ministry of the Holy Spirit to the individual believer and to the church.

Morning meetings will be held Wednesday, Thursday and Friday at 10 a.m. at the Irrigon Assembly of God, located on 8th St.

Pastor Robert Schmolz extends a welcome to all.

The C.A. Millers have returned home after spending a month over the holidays visiting at the home of her son, CPO Robert Holden, and family in Guam. They visited many historical places which were occupied by the Japanese during the second World War.

Miller made a three-day cruise on a ship on the Philippine Sea. On their way home they spent several days in Honolulu. They made a cruise to Pearl Harbor and toured the Island of Oahu.

CAROL'S CAROUSEL

BEAUTY SHOP
JUDY
J & L Motel
567-2528 567-5583
HERMISTON

FRIENDSHIP INN RIVERVIEW MOTEL
P. O. Box 25
Front & 1st S. on I-80 N.
Boardman, Oregon 97818
Area Code 503-481-2775

"I seem to be getting a busy signal!"

camerawork gallery presents photographs by louis bencze
january 13 to february 9

camerawork gallery is located at good apartment hospital & medical center in the nursing education building, 2255 NW Hawthorn St. Portland Oregon. gallery hours are 9 to 5 daily

Mel Boyer
Aerial Application
Aerial Survey and Photography
389-8122
Lexington, Oregon

C and I Furniture
ANTIQUES
COLLECTIBLES
WE BUY
WE SELL
WE TRADE
PHONE 276-0655
424 S. MAIN
PENDLETON

HERMISTON Natural Foods
"Better foods for better living"
Vitamins and minerals, dried fruit, herbs, yogurt, nuts, food for special diets, allergy foods, natural cosmetics by La Vi and Marley naturals
Mail orders accepted **567-6844**
Mr. and Mrs. Frazier, Owners
20 West Hermiston Ave. HERMISTON

MOBIL Boardman



The Boardman Beacon announces a New Look

TO BEACON SUBSCRIBERS

With this issue the Boardman Beacon will appear regularly in the Gazette-Times.

The Beacon section will continue to carry news and advertising of interest to Boardman residents, with the added advantage of having more county-wide news of interest. The change is prompted by the necessity to conserve newspaper, now in short supply, and also to enable the editor to more adequately cover the fast-breaking news in the Boardman area, and to keep abreast of the rapidly changing growth picture for industry in the area.

Beacon subscribers will receive this newspaper on a weekly basis, every Thursday, for the remainder of their subscription time.

Boardman advertisers will be glad to know that, in addition to the Beacon circulation, their advertisements will go into 2,000 additional homes, 95 per cent of which are in Morrow County.

The Beacon will also be able for the first time to do your commercial printing—letterheads, envelopes, statements, business forms and all other types of commercial printing.

Florists

WEDDINGS GIFT IDEAS CUT FLOWERS LIVING PLANTS FTD Speed-A-Gift

Quality costs no more
Jimmy's Flower Shop
Main Street 567-6472

Flowers—stem flowers, arrangements, rentals for weddings, corsages, wreaths and ribbon. 567-6264. **PENDELTON FLOWER CRAFT**, 211 W. Hermiston, Hermiston Ore. 48-476

FOR SALE—73 Chaparral Snowmobile, 78 miles, demonstrator, like new. Increasing size of our family so must sell! Ph. 922-3855 48c

VACUUM CLEANERS: Most powerful machine you've ever seen and the best guarantee of any vacuum cleaner. All parts and labor up to 24 years. See at Piersol's, 176 W. Hermiston, 567-3014.

VACUUM CLEANER REPAIRS: All makes, one day service. Local repair shop, Piersol's, 176 W. Hermiston, 567-3014.

SEWING MACHINE REPAIRS: All makes, one day service. Local store Piersol's, 176 W. Hermiston, 567-3014.

that we have thus far been unable to provide on a local basis.

Readers may submit news items and advertisements by calling 481-5091, and I urge that you do so in order that we can publish a better account of life and times in the fastest-growing city in Oregon.

RICHARD HABERLACH, Editor

ANTIQUE TRADER
Specialize in lamps and parts, glass, furniture, wagons.
Open 7 days a week
611 6th St. Umatilla

TILKUM MOTOR INN
6TH STREET
Umatilla, Oregon 97892
Phone 922-2236

VERLING & MARIE CLARK
Managers

TEXACO
MOORE'S TEXACO

24 HOUR SERVICE
Except Friday & Saturday Evenings
Phone 481-2115
Boardman OREGON

CHUCK WAGON
CAFE
Family Dining
Featuring chicken & Short Orders
Hamburgers
Mr. Duane Beason is your host
Orders to go
103 N. 1st, Hermiston
Ph. 567-3928

Umatilla SELF SERVICE Speed Wash Laundry
20-12-lb.
Automatic Washers
10-Dryers
2-Dry Cleaners
-PARKING AREA-
9th & 1st.
across from Drug Store
Umatilla, Ore.

MOBILE HOME SITES
Soon Available
Wilson's Park
NEAR CAFE, SCHOOLS, SHOPPING RECREATION
Hwy. 730 Ph. 922-3666
IRRIGON