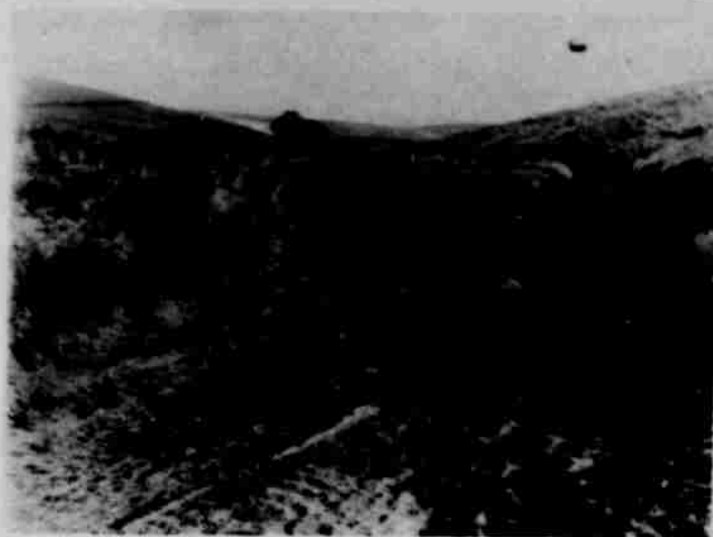
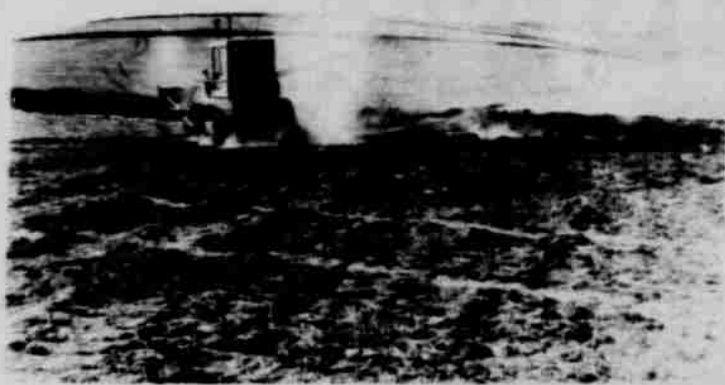


Work 20% Completed in County



Shobe Project stand of grass on debris basin. Grass is Luna Pubescent Wheatgrass and Hard Fescue.



Homemade device used on berms of diversion before and after broadcasting seed on Shobe Canyon Watershed area.

By DALE BONER

Every person should be concerned with and support resource conservation work. The Shobe Canyon project was an example of everyone being dedicated toward the accomplishment of a community problem. This dedication and work is responsible for partially solving the flooding problem for Heppner.

Work completed in the Shobe watershed included the construction of 150,000 feet of diversions, 26 silt dams and 9 acres of grassed waterways. Nearly 250 acres of grass was seeded. Channel enlargement and riprap work by the Corps of Engineers was also a part of the effort. This work has substantially reduced the flood hazard from Shobe.

Flooding is certainly far from eliminated in Heppner however, and this was the reason for organizing the Heppner Water Control District. This district will continue to work on the problem in Shobe and other drainages coming into the town long after many people have forgot about the danger from flooding.

One reason Shobe has been such a threat to the city with the cloudburst, is the large percentage of cropland in the watershed. Another is the steepness, with an elevation difference of 1300 feet within its five mile length.

Balm Fork watershed is another drainage which can cause serious flooding problems. It is similar to Shobe, with a large block of dryland cropland and the drainage itself increasing 1800 feet in elevation in its eight mile length. These same conditions are not as true for the Hinton and Willow creek drainages, so consequently the flood hazard is not as great for the cloudburst storm.

During the cloudburst much of the Force is removed from high runoffs in Hinton and Willow creek. These drainages have flatter grades and the water has time to spread out over the many hayfields.

The same situation may not be true during the winter when the runoff could come from the entire Willow Creek watershed, including all of its tributaries. This was what happened during the winter of 1964-1965.

Continued Page 7

Bi-County Chemical Co.

lone

Tel. 422-7531

The Farm Bureau says —

We support the use of Soil Conservation Service technical staff for assistance in planning programs having permanent value.

We recommend that a federal program of cost-sharing be instituted for those soil and water conservation practices and structures which contribute to the attainment of pollution prevention, enduring conservation and environmental enhancement.

Morrow County

FARM BUREAU

Orville Cutsforth, president - Irvin Rauch, vice president
- John Gochner, secretary

COMPLETE INSURANCE COVERAGE



Protect valuable farm property... and profits, too! Insure with us.

Our moderate cost policies will insure your farm and workers, protect you from financial ruin.

Turner, Van Marter & Bryant

RELY ON YOUR FRIENDLY PHARMACIST...



Your family's health comes first with us

That's why we compound prescriptions with only the finest drugs, as the doctor recommends, and carry quality products for all your needs.

Veterinary Supplies

Murray's Drug

HEPPNER OREGON

UNITED TO SAVE YOU MONEY

UNITED U_i Pharmacies

H-2-A-8118

Phone: 076-9158

YOUR SHARE IN OREGON HARVEST



When the harvest is in—granaries full and bins bulging—what are you going to get out of it?

New Farm Equipment? Home Improvements? New Car? Winter Vacation? Increased Investments?

Visit your nearby branch of First National Bank of Oregon. First National people know farm problems and they're experts in the proper, profitable handling of money.

The Statewide Bank with Hometown Service

FIRST NATIONAL BANK OF OREGON