

KINZUA IS ACTION

A three foot log can be converted to a 1/8 inch strip of veneer within 30 minutes except for the time spent in the steam vat at Kinzua's new veneer plant. This operation from cold deck to banded veneer bundles can be seen at the Open House this Saturday.

The giant, automated, computerized operation began over a year ago when excavations started for the new building which included a 20 foot deep hole for the lathe.

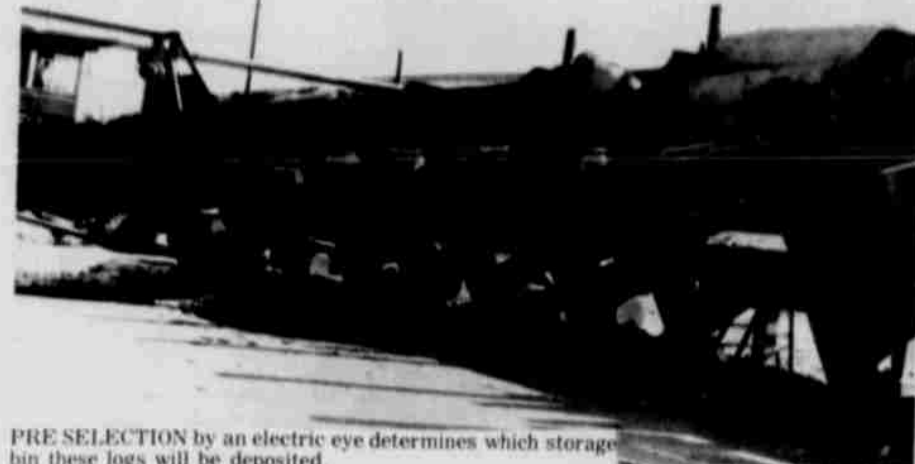
The logs are brought down by logging truck and cold decked. A Caterpillar No. 966 fork lift unloads the truck as well as picks up the logs from the cold deck pile to put them into the infeed deck of the debarker.



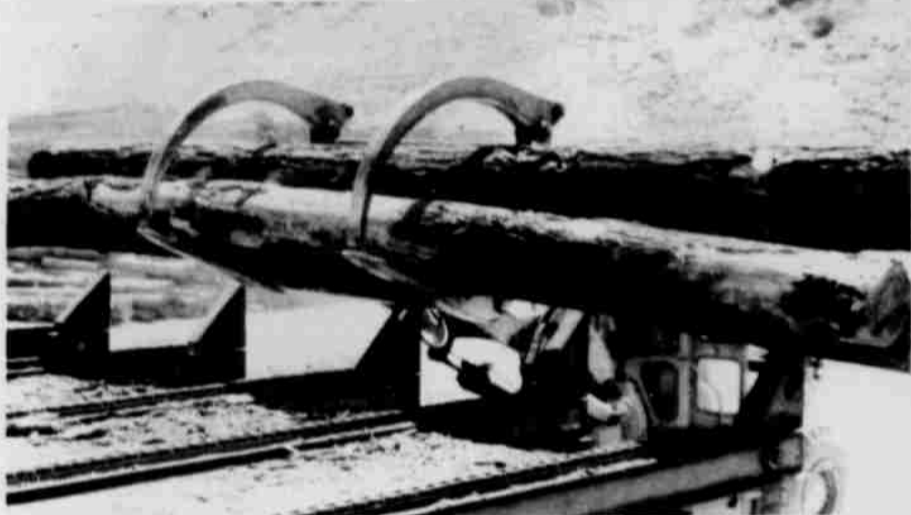
MORE LOGS for the cold deck.

GOES 4-WAYS

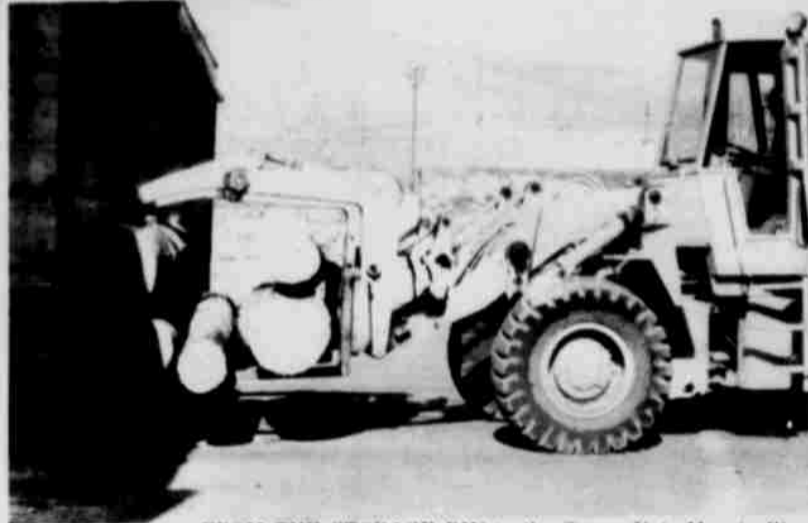
The market determines the direction the logs take from the storage bin. The highest return on the log determines whether it will go to the sawmill for lumber, to the 8-foot lathe, the 4-foot lathe or the smallest to the stud mill. Wherever their destination, they are transported by a Caterpillar No. 930. Even though these huge vehicles look clumsy and cumbersome, visitors will be intrigued as they watch the operators' dexterity with these machines. One log off the ground or an "armful" from the bin, is like picking up twigs.



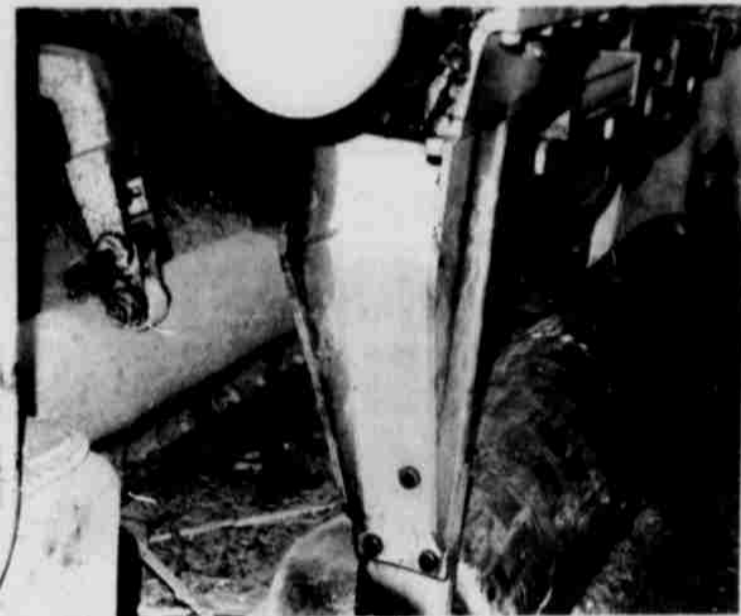
PRE SELECTION by an electric eye determines which storage bin these logs will be deposited.



From the "arms" of the Caterpillar No. 966 fork-lift onto the infeed deck of the Debarker.



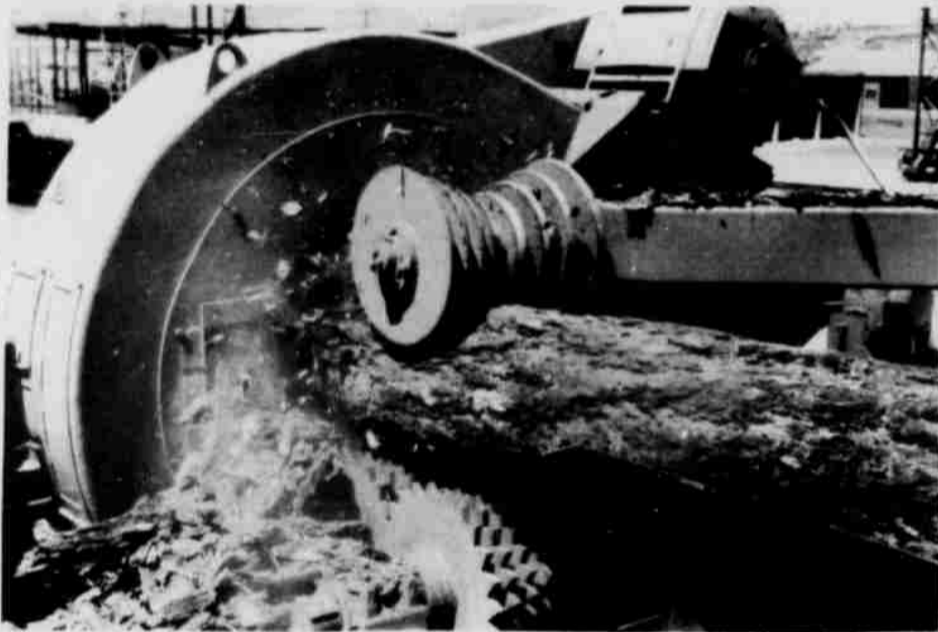
FROM THE STORAGE BIN to the Steam Vat. Marvin Way removes a load of logs from the steam vat to be deposited on the in-feed deck of the lathe. He operates a Caterpillar No. 930 fork lift that may not turn on a dime but can turn on a "quarter."



The lathe about halfway through "peeling" a log while the next log is in a waiting position.

DEBARKER

This push-buttoned machine almost squeezes the bark off. The 8-sectioned hold down arm holds the log down on the rotation serrated wheels that move the log through the knives. The scraper knives inside the debarker ring chip off the bark as they rotate. The bark is carried by conveyor to the "hog" where it is chipped fine and then transported by pressure blower to the boiler house where it is used for fuel.



Bark flies as the knives housed in the Debarker ring chips off the bark from the log held in place by the hold-down and moved along by the serrated wheels below.

STEAM VAT

If the logs are marked for the veneer plant, they must spend some time in the steam vat. Time spent in the steam vat is regulated by the size of the log. Water mixed with steam softens the log to the core until everything in the vat is brought to the desired temperature. This softens the knots and prevents the log from splitting while it is in the lathe. Time in the steam vat varies from 8 to 12 hours.

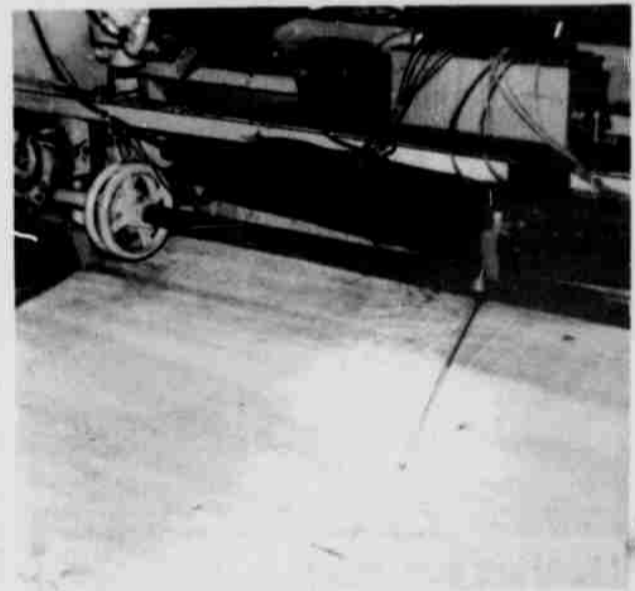
Condensation water is carried to the hillside where three settling ponds have been dug. The water goes from Settling pond No. 1 to No. 2 to No. 3. By this time all resins, bark dust and dirt will have settled out and the water would be pure enough to be returned to the creek. However to date there has been no over-flow from Settling Pond No. 1. The Mill would also have use for the water in sprinkling the cold deck if the water became available. The water comes from Kinzua's well.

THE LATHE

The work of the lathe, another fantastic piece of machinery, is hidden from view of the spectator. The speed of the lathe is automatically controlled. It varies with the diameter of the log to provide a constant flow of veneer. The big log rotates slowly at the start and rotates progressively faster as the diameter diminishes down to the core. The core goes by conveyor belt to the stud mill. While one log is going through the lathe, another log is in the waiting position.

Irregularities on the surface of the log, puts patchy pieces of veneer on the carrying trays but as it gets into the log it comes off in block long strips of veneer.

A six-deck tray system carries the veneer to the Clipper. As one tray fills, the lathe automatically shifts the out-put to another tray.



Output from the lathe

RCA Team Roping

Top winners of the RCA Team Roping Event were Bucky Bradford and Leo Cammarillo at 8.5 to win \$342.90. Second place winners were Burke Davis-Pat Davis with a time of 9.9 to win \$257.17. Third place winners in this event were Tom May-cumber-Curley Krisher 12.0 to win \$171.45. Fourth place went to Aronn Fettech-Ralph Sappington with 12.9 to earn \$85.72.

Other Team Ropers and their time: J. L. Bartlett-Harry Pruitt NT, Mike Marvel-Joe Alexander NT, Dee Wittington-Terry Cave 17.2, Jackie Wright-Berle Putney NT, Bob Weaver-Tom May-cumber, George Hixon-Roice Fullerton 21.6, Monte Evans-Jerry Dougherty NT, Bob Weaver-Curley Krisher 33.5, Jack Wright-George Hixon NT.

Jack Wallace-Dick Rosenberg NT, J. P. Ingram-Bob Johnson 19.4, Wade Kamm-Bill Ward NT, Jack Wallace-Dick Kelly NT, Mark Schrick-er-Bob Ragsdale 16.7 (+5), Les Kamm-Wade Kamm NT.

Gary Gist-Bucky Bradford NT, Ingram-Bob Ragsdale NT, Dick Powers-Wayne McMean NT, Mark Schrick-er-Bob Johnson NT, G.L. Long-good-Dick Rosenberg NT.

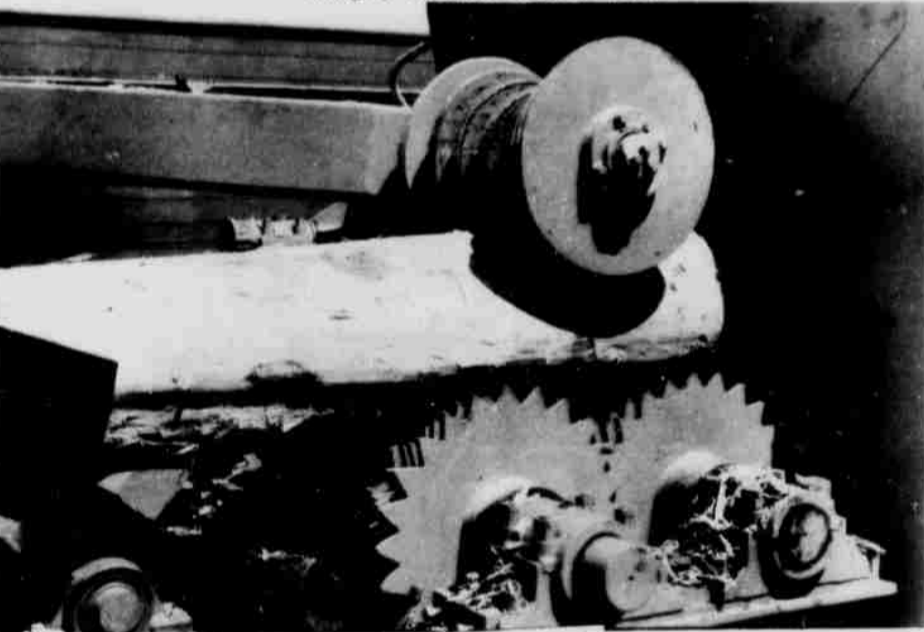
Winners won lariats presented by Hamlins Tavern & Harris Drive-In.

AT ALBANY

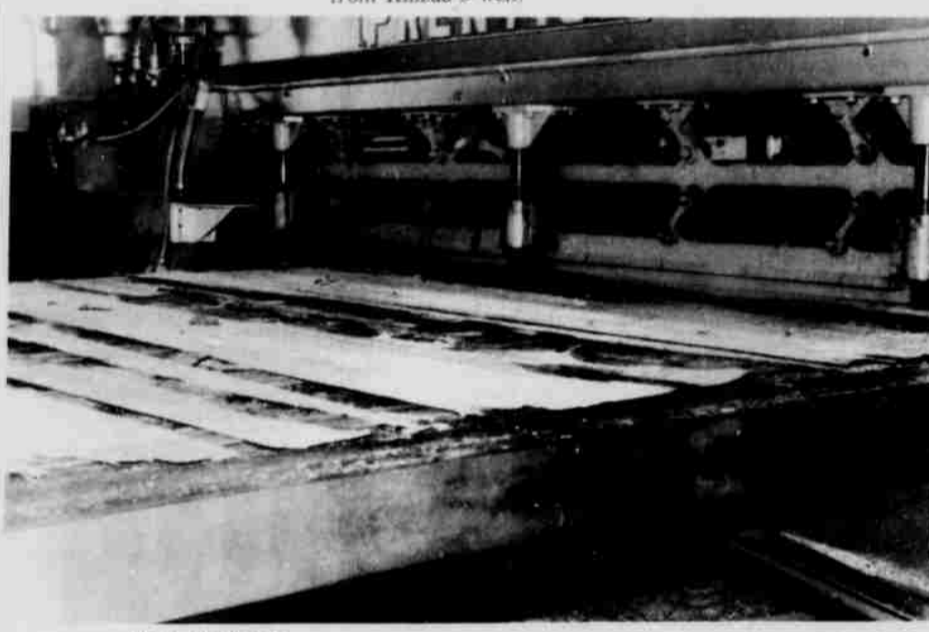
Mrs. Carl Rhea and Lori spent a week visiting another daughter, Mr. and Mrs. Harry Kolley at Albany. They enjoyed one day at the coast but suffered through the 100 degree weather that Albany had while they were there.

HAS SURGERY

Mattie Green underwent major surgery last week in Pendleton. She is out of the hospital and is at the home of her son and daughter-in-law, Mr. and Mrs. Joe Green in Pendleton. She is getting along very well.



Outfeed. The debarked log on the opposite side of the Debarker ring is held by a second hold down onto the serrated cogs that move the log on out of the debarker.



THE CLIPPER

The incredible piece of equipment that scans the 8-foot veneer 100 times every one tenth of an inch to clip out dark spots, cracks and imperfections as well as to size.

THE CLIPPER

Most fantastic of machines is the computerized clipper. Its automatic scanning circuit is programmed to scan 100 times across the 8 foot sheet of veneer every one tenth of an inch as the plywood travels 150 feet per minute. It clips out dark spots, cracks and imperfections and to proper size. It cuts to a full width of 4 feet, half sheets of 2 feet and random strips.

GREEN CHAIN

Speed is the essence on the green chain. The sheets of veneer are taken from the green chain nd stacked on selected carts. These stacks are picked up by a hystor (whose driver must have eyes in the back of his head) and taken to be banded. Then it's taken to be banded. Then it's ready for shipment by rail or truck.

CIRCLE SAW

The peeled log goes by chain to the saw. The operator is housed in an all-window structure in front of the saw which is operated from a control panel.

The 7 foot circle saw cuts the logs to a pre-determined length and the sections are moved by conveyor belt to be dropped into the proper storage bins.

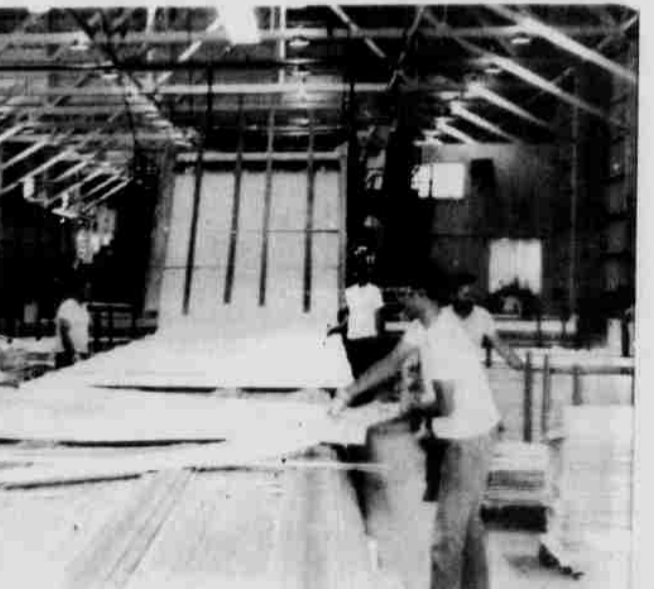
An electric eye automatically measures the diameter of the log and pre-selects the proper storage bin where it is to be deposited after it is sawed.



The 7-foot circle saw sinks its teeth into a 3-foot log.



TIM BELLAMY applies the first band of two that bundles the sheets of veneer for shipping.



Two lathes feed onto the green chain. The plywood is light but workers must move fast to keep ahead of the out put. Imperfections are carried to the "hog" to be used for fuel in the boiler house.

Novice Bronc Riding

In commenting on this event, the announcer said this was an opening for the young fellows who want to learn "by the rules." The Results Book given to the G-T fails to list the results of this event. Larry Durtee won the Trophy buckle for First Place from Charlie and Dorothy Heard of the Heppner Gazette-Times. Others riding included Pat Shannon, State High

School champion Kevin Johnson came out on Black Jack. This horse appeared to stop in mid-air and with all four feet off the ground shook the dirt from his feet and then pitched the rider. He laid for awhile apparently having had the air knocked from him. On a reride he scored 33. Others listed on the Sunday show were Merlin Cassens and Mike Grant with NT.

MOVING??

Local or Long Distance

Free Estimates
Call Gene Orwick—
989-8586
or Condon 384-2292

Agents for
United Van Line.