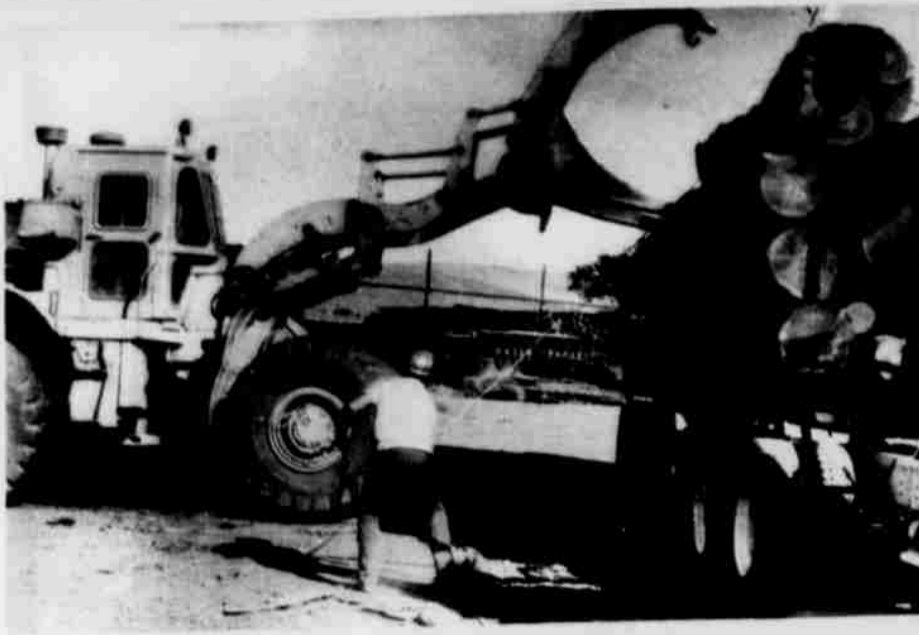


More ACTION



UNLOADING AT THE COLD DECK Dean Graves takes off the last choke chain as Pete Schwarzin manipulates the Caterpillar No. 966 to take the first bite to unload.



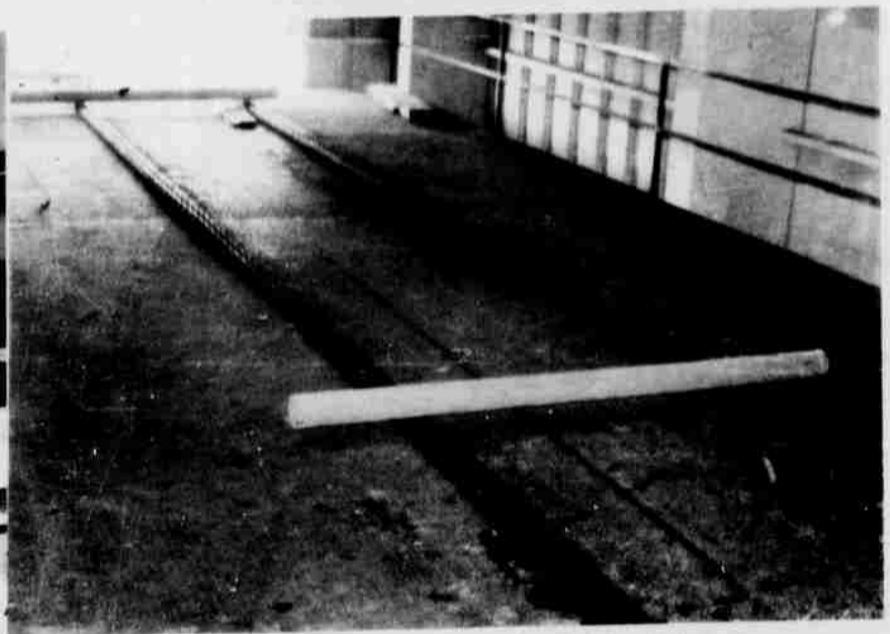
OUT OF THE STORAGE BIN to the Steam vat Doug Dubuque expertly picks up a load with the Caterpillar No. 930 fork lift.



FROM THE STEAM VAT on to the infeed deck of the Lathe.



ORANGE AND BRIGHT is the lunch room where the refreshments will be served at the Open House on Saturday.



ON THE WAY OUT a core from a log that has just gone through the lathe is on its way to the stud mill.



L-O-N-G sheet of veneer is peeled from the log in the lathe and is on its way to the clipper.