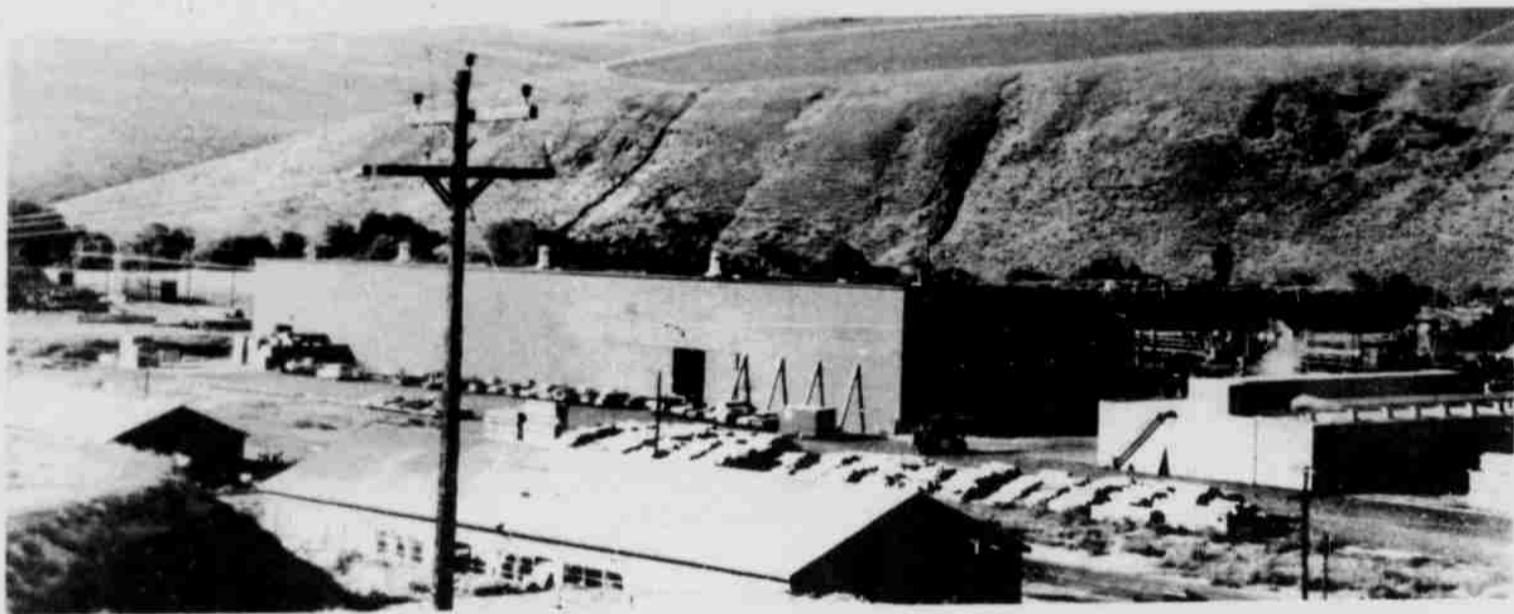


Sixty-three Years of Progress...

A Growing Tree Farm!



Kinzua mill — producing 150,000 board feet daily. Big veneer plant shown above.

History of Kinzua

Kinzua Tree Farm was founded in 1909 with the purchase of 50,000 acres around Kinzua. Shelton State Park on Highway 19 was the campsite used for headquarters and Kinzua deeded this sizable area to the State of Oregon in memory of Mr. Shelton—the first Forester. The name Kinzua is from the Seneca Indian language and means "Place of many fishes."

In 1927 work was commenced on the mill and townsite at Kinzua and in 1929 the present Kinzua mill began operations. During the 1930's and 40's the tree farm was expanded to 140,000 acres.

In 1959 the Heppner mill was purchased and its tree farm in Umatilla and Morrow counties added to Kinzua's holdings. During the 1960's the plant at Kinzua was modernized and expansion of the tree farm to its present 227,000 acres was accomplished.

In 1971 work commenced on a new green veneer plywood plant at Heppner. Completed at a cost in excess of two million dollars, 70 new jobs were added to Kinzua's former payroll of 276. Contract logging firms are also employed and will expand as thinning operations commence on the tree farm to provide material for the new plant.

We look forward to an exciting era of tree farming development in the 1970's. Tree planting projects, tree thinning programs, water development projects and range improvement programs have been initiated in cooperation with the State Forestry Department, Soil Conservation Service, Forest Service and the 54 local ranchers who lease grazing rights on the tree farm. We pledge all our tree farm practices will surpass those required by the new Oregon Forest Practices law.

A Growing Part of Eastern Oregon...Past, Present and Future
KINZUA CORPORATION
 Wheeler, Morrow, Umatilla and Grant Counties