

Rail Strike Hits Morrow County Spud Crop July 31 Dance to Honor Princess Dovie Alderman

Rough and Ready Truman stopped the rail strike a few years back in no uncertain terms. It is time for some more of that same kind of Truman action.

Jeep Slocum of Oregon Potato at Umatilla terms the strike as a "paralyzing disaster" and says the solution will not be simple that "we have a bear by the tail". He feels that the railroads and the unions should accept the recommendations of the government committee. It is grossly unfair for a few to paralyze the whole nation.

Food prices will skyrocket and there could very well be famine, he said. In talking to Los Angeles Wednesday morning he said as of this evening no cantaloupes will be shipped from California due to new transportation difficulties there. Thousands of cantaloupe farmers will go bankrupt.

He talked to one of their accounts in Kansas City Wednesday morning. He was told that 9000 workers had been laid off from an assembly plant due to the crippling strike.

His own plant is shipping

new potatoes by trucking them across the river and loading at Plymouth on the Burlington Route. This is a burdensome expense. Growers are already receiving a low price on their potatoes and this is adding to the cost of production. They are realizing an out-of-pocket loss of \$1000 a day. This is the only way they can supply their accounts.

Morrow County Potatoes
Morrow Produce will begin hauling and processing potatoes from the Dennis Logan ranch at Empire West, east of Board-

man and north of the freeway Thursday. He has killed 30 acres that are ready to go. When they finish with his, they expect to start digging on the Nelson-Tucker ranch. They have killed a full circle of 125 acres.

D. O. Nelson says there's a wonderful crop of potatoes, large and smooth. Unlike wheat, new potatoes can't be stored, they have to go. "The strike is a very bad situation. We can't begin to find enough trucks to haul potatoes. What we need is refrigerated rail cars . . . fast".

Wheat Harvest
Reports have come in of wheat running 100 bu. an acre, 65 and 80 bushels to the acre. Larry Mills of Morrow County Grain Growers says the 1971 harvest was slow getting started but with the hot weather is getting into full swing. They are receiving wheat at all stations.

It is too early to tell, but he says the county average will run about 30 bu., the same as last year. The quality is much better than last year.

Storage facilities are ample. They do not anticipate having to store any grain on the ground.

D. O. Nelson's Wheat
D. O. Nelson has cut two excellent fields of wheat close to the ranch house. He is happy with the yield of his irrigated wheat and his dry land wheat as well. He says "It's weighing up good and is excellent quality".

Safflower at Grieb
Gary Grieb says he'll bring in a stock of safflower the next time he comes to the G-T office. His 70 acres more than waist high is about to bloom. It is said the blossoms are brilliant yellow and orange and a field of blooming safflower is a gorgeous sight. Gary says it is prickly like a thistle and grows on one stock like a bull thistle. It is harvested by combine set about the same as barley. The grain will be delivered to Morrow County Grain Growers. Safflower is grown for the oil.

July 31 Dance to Honor Princess Dovie Alderman

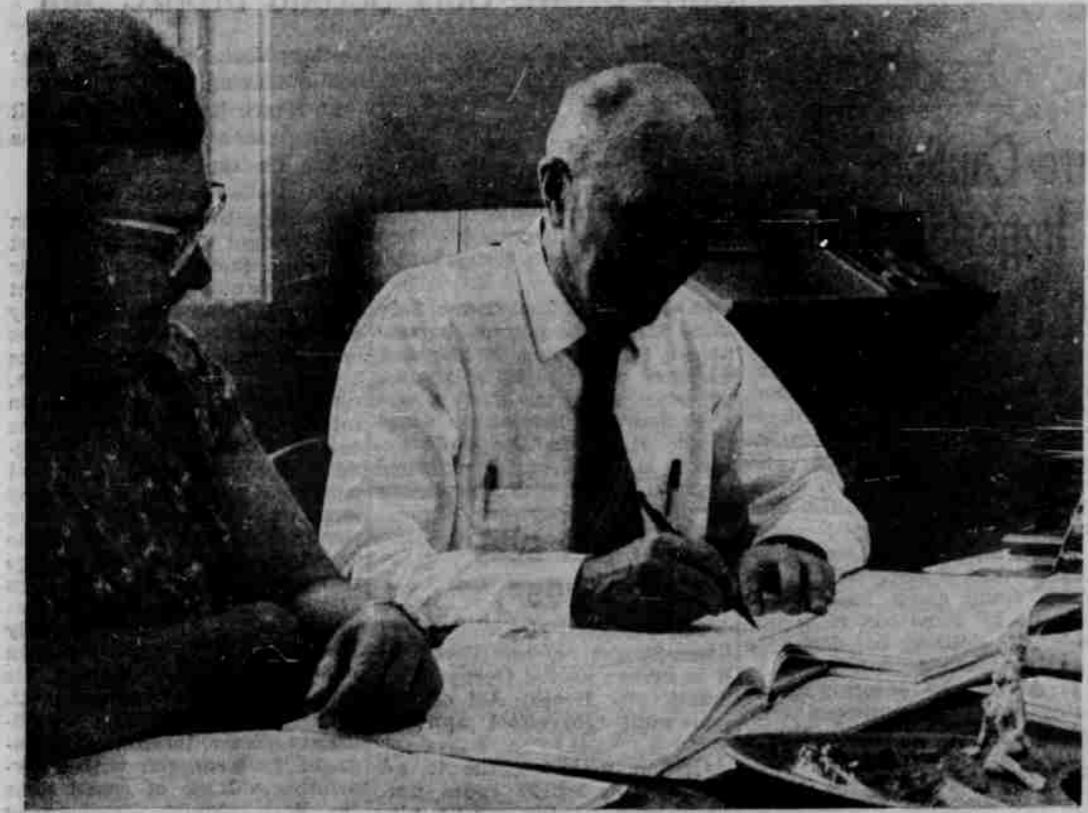


HERE'S PRINCESS DOVIE ALDERMAN for whom a dance is to be held honoring her out at the Fairgrounds Pavilion, Saturday night, July 31. She is sponsored by the Morrow County Wranglers. This dance will have music provided by the Tune Twisters of La Grande. You may read about her in a feature story on an inside page this issue.

88th Year

THE GAZETTE-TIMES

Heppner, Oregon 97836, Thursday, July 29, 1971 Number 23



GILES FRENCH, author of the history of Morrow County, Homesteads and Heritages, autographs a book for Rachel Harnett, Giles was in town Friday signing the Sidewalk Bazaar and autographed a goodly number of the new books. The books may be purchased at both banks in Heppner, Bank of Eastern Oregon and First National. Those who pre-paid their books may also pick them up at the banks. A total of 174 books have been picked up. It is expected that Giles will be in town for the Fair and will autograph books at that time.

GRAIN PRICES
F.O.B. Lexington, does not include warehouse chgs.)
(Courtesy of Morrow County Grain Growers)

White	\$1.45 1/2
Red	\$1.49 1/2
Barley	\$37.00

Corps Releases Flood Statement

The Walla Walla District of the Army Corps of Engineers today released a draft environmental statement for the proposed post-flood stream channel modification on Shobe Creek at Heppner.

This statement, required by the National Environmental Policy Act of 1969, summarizes the proposed work and the anticipated environmental impacts.

Copies of the statement have been sent to various local, State, and Federal agencies for review and comment. Individuals interested in obtaining a copy can write to the District Engineer, Walla Walla District, Corps of Engineers, Building 602, City-County Airport, Walla Walla, Wash. 99362.

Comments on the draft statement from all interested parties are welcomed. Comments will be considered in project planning and in preparation of a final environmental statement.

Boys Get Game Fines; Face Other Charges

Oregon State Police arrested four young men last week because of connection with recent vandalism in the mountains south of Heppner. They were charged with a game violation and each paid a fine of \$20 in Heppner Justice Court. William Dahl Able, 19, of Hermiston was charged with aiding a game law violation. James Daniel Bowman, 19, of Echo and Carter Edward Engum, 20, of Stanfield were charged with hunting by prohibited methods. There is also a younger boy from Hermiston involved in the charges.

They are also faced with charges of breaking glass in a building not their own. And they face a felony charge of malicious and wanton injury to personal property. The boys are out on bail of \$300 each and being given time to secure help from attorneys.

They will be tried on the misdemeanor charge here in Heppner Justice Court and arraigned on the felony charge. No date has yet been set.

Fire Ghost To Come Down

The shell of the Degree of Honor apartment house that burned early this spring is about to come down. The Jaycees started tearing down the structure Wednesday evening. They have purchased the lot. The purchase price was tearing down the structure. The Jaycees hope eventually to build a clubhouse of their own on the site.

Claude Gets High Elks Post



E. GENE FOURNACE, Canton, Ohio (left) elected Grand Exalted Ruler of the Benevolent and Protective Order of Elks at the 107th Grand Lodge Convention in New Orleans, meets with one of his top officials, Claude R. Graham of Heppner, Oregon, who was installed July 23 as Deputy Grand Exalted Ruler for the Northeast District of Oregon. Claude is a former Exalted Ruler of the Heppner Elks Lodge. Mrs. Graham accompanied her husband on the trip. Exalted Ruler and Mrs. Cal Sherman of Heppner reported a very fine National Convention at New Orleans. Cal reported that "New Orleans was fine to visit but he was mighty glad to get back home."

Post Rewards for Rustling

Morrow County Livestock Growers have recently reported losses believed to be the result of theft. Don Stangel, Morrow County Extension agent, in charge of livestock wants to remind everyone that the Morrow County Livestock Growers Association will pay a cash reward not exceeding the sum of \$500.00 for information and evidence resulting in the arrest and conviction of any person or persons stealing livestock owned by a member of the livestock association. The Oregon Cattleman's Association also has a \$1,000.00 reward available. Posters for both of these rewards are available at the Morrow County Extension Office.

County Gets Highway Funds

The Oregon State Highway Commission today announced distribution of \$5,618,547.13 in highway-user tax funds to the 36 counties of the state.

The allocation is based on the statutory 20 percent for the period April 1 to June 30, 1971. The funds come from the following sources: motor vehicle registration and operators' license fees, gasoline tax, use fuel tax, motor carrier fees, and fines and penalties collected for violations of the size and weight statutes where complaints are made by the Highway Division weightmasters.

The allocation to each county is based on the number of vehicles registered in it.

Morrow County will receive \$8,726.47. There are 4511 vehicles in the county.

Thank You

A cordial Thank You to everyone who participated in and supported the Eighth Annual Sidewalk Sale last week in Heppner.

Merchants Committee

One-A-Day Alarms

The fire alarm sounded Tuesday and Wednesday night after lunch.

Tuesday's alarm took the truck to Payne's Second Hand Store. It wasn't entirely a false alarm. Mrs. Payne heard a strange sizzling sound followed by sparks. The possibility of short in the wiring was being investigated.

Wednesday's alarm was a grass fire on the Rasmussen-Lott Addition. The fire started from blasting that was being done to dig the sewer line. Fire Chief Burkenbine said about an acre of grass burned.

There is a modular home up on the hill just waiting to be set up.

Little League All-Star Players In District Meet

The Willow Creek Little League All Stars were in The Dalles last Thursday and Friday for the District Little League tournament.

Their first game Thursday was lost to The Dalles Western. Kerry Harsin and Jerry Cutsforth pitched. Bruce Young was catcher for the first part of the game then when Jerry went in to pitch, Kerry started in as catcher. The boys made three runs. David Allstott knocked a good hit and made it home on errors and brought in Jeff Cutsforth. Jerry Cutsforth came in on an over-throw.

Friday the local boys lost to the Columbias (Stanfield-Echo area). Dave Allstott pitched and Curtis Sweek was catcher.

While it was disheartening to lose both games, the boys saw some real good ball playing.

Coaches Harley Sager and Tom Wilson were impressed with the kind of baseball they saw. They recognized that most of our boys lacked basic baseball training. Many of the All Star team were 11 year olds and will be back to play another year. They indicated a strong interest in attending a Baseball Clinic for demonstrations in fundamentals of baseball. The two coaches are hoping to set up such a clinic sometime in August before football arrives.

Planning Stage Money Hurdles First Step

Senator Packwood's office announced Monday that the House Appropriations Sub-committee on Public Works has approved \$300,000 in their budget for the planning stages on the proposed Willow Creek Dam at Heppner.

This proposal now must be approved by both the House and the Senate.

WEATHER
By DON GILLIAM

	Hi	Low	Prec.
Wednesday	97	60	—
Thursday	96	59	—
Friday	95	57	—
Saturday	92	54	—
Sunday	95	56	—
Monday	95	59	—
Tuesday	100	64	—

Money For Flood Control

We are trying to contact everyone in Heppner for donations to "FLOOD-FUND". Monies so donated are to be used where needed—on Roice Fullerton land, on channel work in Shobe or where needed in town. If we receive more monies than needed, it will be returned percentage wise to donors.

This public subscription is the only way we can raise money NOW for work needed NOW. We hope every person in Heppner in favor of having work done NOW will contact one of the following or leave donation at Bank of Eastern Oregon for "FLOOD FUND" as soon as possible. Thank you.

Jewel Hager, Butch Laughlin, Betty Rood, Clarence Rosewall, Claude Buschke, Ed Dick, Clyde Allstott, Marcel Jones, Steering Committee.

ASCS Gives Report On '72 Wheat Program

Provisions of the 1972 program for wheat provide for an acreage set-aside requirement equal to 83 percent of the farm domestic allotment—the maximum provided by law. The program will again allow the substitution of feed grain for wheat; that soybeans will be a substitute crop next year; and that barley will be included in the 1972 feed grain program. No limit on wheat acreage will be established for 1972, within the farms permitted acres, according to David McLeod of the Morrow County ASCS Office.

There is no change in the previously announced 1972 domestic wheat allotment of 19.7 million acres or in the loan rate of \$1.25 per bushel national average established for the 1971 crop. Farm-stored and warehouse-stored loans and purchases are available to producers who participate in the program.

The 1972 wheat set-aside percentage is based on preliminary estimates of acreage required for next year's production to meet U. S. domestic and export needs, USDA officials said. It compares with the 1971 set-aside rate of 75 percent of the farm's allotment.

Under the substitution provision, acreage devoted to feed grain or soybeans will be considered planted to wheat to prevent loss of allotment. Acreage devoted to wheat or soybeans will be considered planted to feed grain to prevent loss of the feed grain base.

This will enable a producer to plant all or any combination of his acreage to wheat, feed grain or soybeans without loss of planting history or program benefits.

As in this year's program, there is no provision regarding excess wheat production in the 1972 program. However, excess wheat stored under prior programs may be released to the extent production is less than three times the domestic allotment multiplied by the farm yield.

As was the case this year, producers will receive preliminary payments after July 1 equal to 75 percent of the estimated face value of the wheat certificate. Any remainder will be paid after Dec. 1, 1972.

The inclusion of barley in the 1972 feed grain program is the result of USDA estimates that feed grain supplies will be adequate in 1972 due to the improved supply of blight-resistant corn seed. The set-aside requirement for barley will be between 20 and 35 percent of the base. The exact set-aside percentage will be indicated when the 1972 feed grain program provisions are announced.

Soybeans have been included as a substituted crop in 1972 in view of the supply outlook. Wheat producers in 1972 will receive 100 percent of parity on the production of their full domestic allotment, the same as this year. Face value of the certificates will be the difference between 100 per cent of parity on July 1, 1972 and the national average wheat price received by farmers from July through November, 1972.

Under the current program, the farmer may plant as much wheat or any other non-quota crop as he wishes after he has met his acreage set-aside and conserving base requirements. Or, he can choose not to plant any wheat. Crops subject to quotas in 1972 will be peanuts, rice, tobacco, extra long staple cotton, and sugarcane.

Producers are not required to plant wheat to obtain certificates. However, failure to plant or be considered to have planted at least 90 percent of a farm's 1972 domestic allotment of either wheat, corn, grain sorghum, barley or soybeans can result in a reduction in the 1973 allotment by as much as 20 percent. If no wheat or substitute is planted for 3 consecutive years, the entire allotment can be lost. All allotments removed from farms will be reallocated to other wheat farms.

Acreage which is not planted due to a drought, flood, or other natural disaster or a condition beyond the control of the producer will be considered planted to wheat. Also, any producer who makes a required acreage set-aside but elects to receive no payment will not lose his allotment.

Producers of wheat for domestic food use will continue to pay 75 cents per bushel towards the domestic certificates value. Again in the 1972-73 marketing year, no export marketing certificates will be issued.

The 55 percent Summer Fallow provision is in effect for next year, the same as in 1971.

As in 1971, producers may graze set-aside acres except during the five principal months of the normal growing season, but set-aside acreage must be protected against erosion, weeds, insect damage and rodents. In 1972, sweet sorghum again may be planted on the set-aside acreage and grazed, except during the five months of the growing season.

Producers who wish to qualify for program benefits need to sign up to participate. Sign-up dates will be Feb. 28 through April 7, 1972. A producer may participate in the wheat program on any farm or all farms in which he has an interest, as he wishes.

ASCS county offices will notify wheat producers of their domestic allotments and the applicable set-aside for their farms.