

Gene Winters Leads Team of Specialists On Wheat Research Project in Jordan

By DAVE TURNER
Agricultural Information Specialist
OSU Cooperative Extension Service

A six-man team of Oregon State University wheat specialists will leave for Jordan later this month to implement a two-year program to improve Jordanian wheat production. The Jordan Wheat Research Project is a cooperative effort by OSU, in behalf of the U. S. Government, the Agency for International Development and the Government of Jordan.

Under the contract signed by OSU and the U. S. Government, the project members will provide technical assistance to the Ministry of Agriculture in Jordan to develop the required techniques, which, hopefully, will double Jordanian wheat production prior to 1980. The plan includes 12 points toward increasing wheat production, ranging from determining the most effective chemical control of some of the major weeds found in wheat fields to providing leadership in the development of an expanded extension education program in modern wheat technology.

Wheat Major Crop

Wheat is the major crop of Jordan in terms of both acreage and money; about one-half of the farm land is seeded to winter wheat. Yields are low, primarily because of the scant and erratic rainfall. As a result of these low yields, Jordan has had recurring deficits and has had to look to the United States to help meet her food requirements. Although some wheat re-

search has been under way in Jordan for a number of years, limited progress has been made in identifying improved varieties.

The Government of Jordan, faced with an increasing population and decreasing food production, has recently established a long range objective to bring food production and consumption into balance.

As part of this long-range program, the OSU scientists will assist the Jordanian Government to increase wheat yields grown within its boundaries and work to improve efficiency in handling and storing the wheat.

Chief of the project is Eugene P. Winters, who has been staff chairman of the Morrow county extension agents, and one of the foremost authorities on wheat production in the country. Winters and his family will live in Jordan for the full two years of the program. He will coordinate the research and extension work beginning with his arrival in Jordan later this month. He, his wife and two children left the U. S. on September 19.

Winters has had a long and distinguished career with the Extension Service at OSU. He joined the extension service in 1954 after two years with the Soil Conservation Service. He served in Wheeler, Clatsop and Jackson counties before being named to the Morrow county staff in 1965.

A graduate of OSU in 1950, Winters returned to college during 1962 and 1963 to get a masters degree in education from the University of California at Davis. He majored in soils and water management at OSU and followed with a major in irrigation at Davis.

Works on Projects

As extension agent, Winters has been involved in some major soil and forest projects. He supervised the reseedling of the Ashland Burn in 1959, and in 1965 initiated community action programs in Jackson county.

He is a member of the Society of Agronomy, the Crop Society of America, the Oregon Reclamation Congress, and in 1964 was chosen for membership in Epsilon Sigma Phi, national honorary fraternity for extension workers.

G. Irving Hart of Moro will be the soils advisor consultant for the first four and a half months of the program. His function will be to advise the Jordanian agriculturists in the best uses of farm machinery and implement improved methods of soils and wheat variety testing.

Hart served in a similar capacity in 1967, and will be returning to Jordan to coordinate the continuation of experimental plots to demonstrate dry-land cultural practices.

Merrill Oveson, who was agent from 1931 to 1938 and superintendent from 1948 to 1966 of the Pendleton Experiment Station, will take over as the agronomy specialist after Hart leaves. Oveson, as superintendent of the Pendleton station, organized research and devised new methods of growing wheat in a climate similar to that he

will encounter in Jordan. He is recognized as one of the finest agronomists in the Northwest.

Other Specialists Help

Four other food specialists will be involved in the program for varying lengths of time.

Rudolph Vigil, a graduate student in the School of Agriculture at OSU, was in Jordan in January, 1968 to make a secondary screening of herbicides. He will continue this work under the present program beginning in October. He will remain in Jordan three months as the weed expert of the team.

The grain storage and marketing consultant, Dr. D. D. Hill, will examine the total problem of grain storage and develop a set of recommendations for establishing adequate means of storage and marketing. Hill is professor emeritus in the School of Agriculture at OSU and is breaking his semi-retirement to be the team's marketing expert for four months.

Dr. Norman Goetze, farm crops specialist in the extension service, will spend three to four weeks each year in Jordan and monitor project affairs year round from the OSU campus. As senior consultant of the project,

Goetze will coordinate all specific proposals and keep the personnel informed of new objectives.

Soils Professor Aids

A soil moisture and fertility consultant, Dr. Tom Jackson, will spend one month in Jordan to work with Jordanian soil experts and determine the best uses of certain fertilizers. Jackson is also a professor of soils at OSU.

Under the contract of the Jordan Wheat Project, OSU will also provide training for selected Jordanian students of agriculture. Two Jordanians will live and work on farms in eastern Oregon where they will have an opportunity to practice and study the wheat cultural methods used in Oregon. These trainees will visit the Pendleton Experiment Station and the OSU campus during their one-year stay in Oregon.

A third man will do graduate studies in plant breeding and chemical weed control on the OSU campus.

Top Beef Cattle Shows Scheduled At PI Exposition

Three top nationally rated shows in the beef cattle division are on the schedule of the 1968 Pacific International Livestock Exposition in North Portland October 4 to 12, according to Irvin Mann, Jr., of Stanfield, chairman of the livestock show committee.

Two new ratings which have been added are the Four-Star Angus Show and the Standard of Perfection Polled Hereford Show. Again this year is the National Register of Merit Show for Herefords.

Mann said the two Hereford Shows combined are expected to draw more than 200 entries, representing a substantial increase over the number entered in the past.

The Charolais cattle show is expected to attract 75 to 100 head, more than double previous years' entries.

Mann said the emphasis will be on the modern show animal which does not carry excessive fat and is a good, efficient producer of red meat.

In addition to the shows, there will be three beef cattle sales—Angus, Charolais and the Junior Hereford Association calf sale.

State Compensation Insurance Rate Due for Reduction

Gov. Tom McCall reported today that Oregon employers who pay unemployment insurance taxes, under the reduced rates now in effect, will have a reduction of more than \$7.7 million in 1969. This is in addition to the \$7.5 million they saved in 1968 under the lowered rate structure. This reduction was made possible by the legislation which went into effect on January 1 of this year and was passed by the 1967 legislature.

Unemployment insurance tax rates now range from 0.8 to 2.7 percent, an average of 1.5 percent of the first \$3,600 of the employer's earnings. The governor said that the current Unemployment Insurance Trust Fund balance, as of August 31, is sufficient to pay benefits for nearly two years under severe recession conditions. This is in excess of the amount necessary to place in effect the lowest tax table under the law adopted by the legislature last year.

More than 16,000 employers will pay the lowest 0.8 percent tax rate next year as reported by the Department of Employment, McCall said.

Under the law, the present adequacy of the Unemployment Trust Fund makes it possible to put into effect the lowest tax rates for employers qualifying by their experience ratings. The Department of Employment expects, because of the present legislation, which triggers in new rates when the fund goes below a certain level on August 31, that it will never again be possible for the fund to reach the low level that it did in 1958, jeopardizing the security of Oregon's insured workers, the governor said.



DONALD SMITH, manager of the Columbia Basin Quarter Horse show, and Mrs. Smith, show secretary, display trophies to be presented to winners at the show on September 28 at the Umatilla county fairgrounds, Hermiston. Large horse figure trophies are presented to grand champion mare, gelding, stallion, and all-around youth winner.

Columbia Basin Horse Show Set For Hermiston

Don Smith, show manager for the third annual quarter horse show sponsored by the Columbia Basin Quarter Horse Association to be held September 28 in Hermiston, extends an invitation to anyone wishing to watch the activities.

The halter classes and youth events start at 8:00 a.m. followed by the working events at 1:00 p.m. No admission is charged and plenty of seats are available. The action will be announced by Eddie McMurdo, Walla Walla, secretary for the Northwest Quarter Horse Association. Refreshments on the grounds will be available in the Hermiston Jaycee Concession stand.

Floyd Jones, Heppner, director of youth events for the show, announces that any young horseman, 18 or under, who owns a quarter horse, or rides one owned by a member of his family, is eligible to take part in the show. AQHA registration papers must be available.

Jones asks exhibitors to note that the youth classes will start at 8:00 a.m. The number of youngsters taking part increases each year. The youth classes are similar to the 4-H Horse program.

Classes include showmanship at halter, western pleasure, western reining, pole bending, stake race, western riding and barrel racing.

W. J. Krumbach, Jr., Milton-Fresewater, who judged the 4-H classes at the Umatilla county fair this year, will judge the events. Mrs. Ralph Tachella, Pendleton, will assist him as

youth ring steward. Mrs. Jess Montgomery, Hermiston, will present trophies and ribbons to six places to the winners of the classes.

Following the action and announcing the winners will be done by Art Kelley, Hermiston. Entry blanks and further information is available from Mrs. Don Smith, 1555 W. Highland,

Hermiston, 567-6272.

Mrs. Beatrice Gehrke and Mrs. Jerrold Runyon, both of The Dalles, and their sister, Miss Mary Mason of Portland, spent one day last week visiting relatives in the lone area. They were guests at the homes of Mrs. Clara Kincaid and Mrs. Mabel Cotter.

We're Ready to Serve You . . .
For Seed Cleaning and Treating

- At our plant—25c bu., 50c sack, any amount.
- At your ranch—with portable treater—30c bu., 60c sack, minimum of 250 to 300 bu.

Harold Erwin

Ph. 676-5806. Mornings or Evenings for Appointment
Heppner, Ore.

Available Now
BULBS
For Spring Flowers

Varieties of

- Tulips
- Daffodils
- Hyacinths

CORNETT GREEN FEED

242 W. Linden Way
HEPPNER

BOYS--AGES 8 thru 13
ATTEND OUR

Punt, Pass & Kick Clinic

Co-Sponsored by Lone Lions Club

Saturday, September 28

IONE HIGH SCHOOL
FIELD, 10:00 A.M.

RODEO GROUNDS,
HEPPNER, 11 A.M.

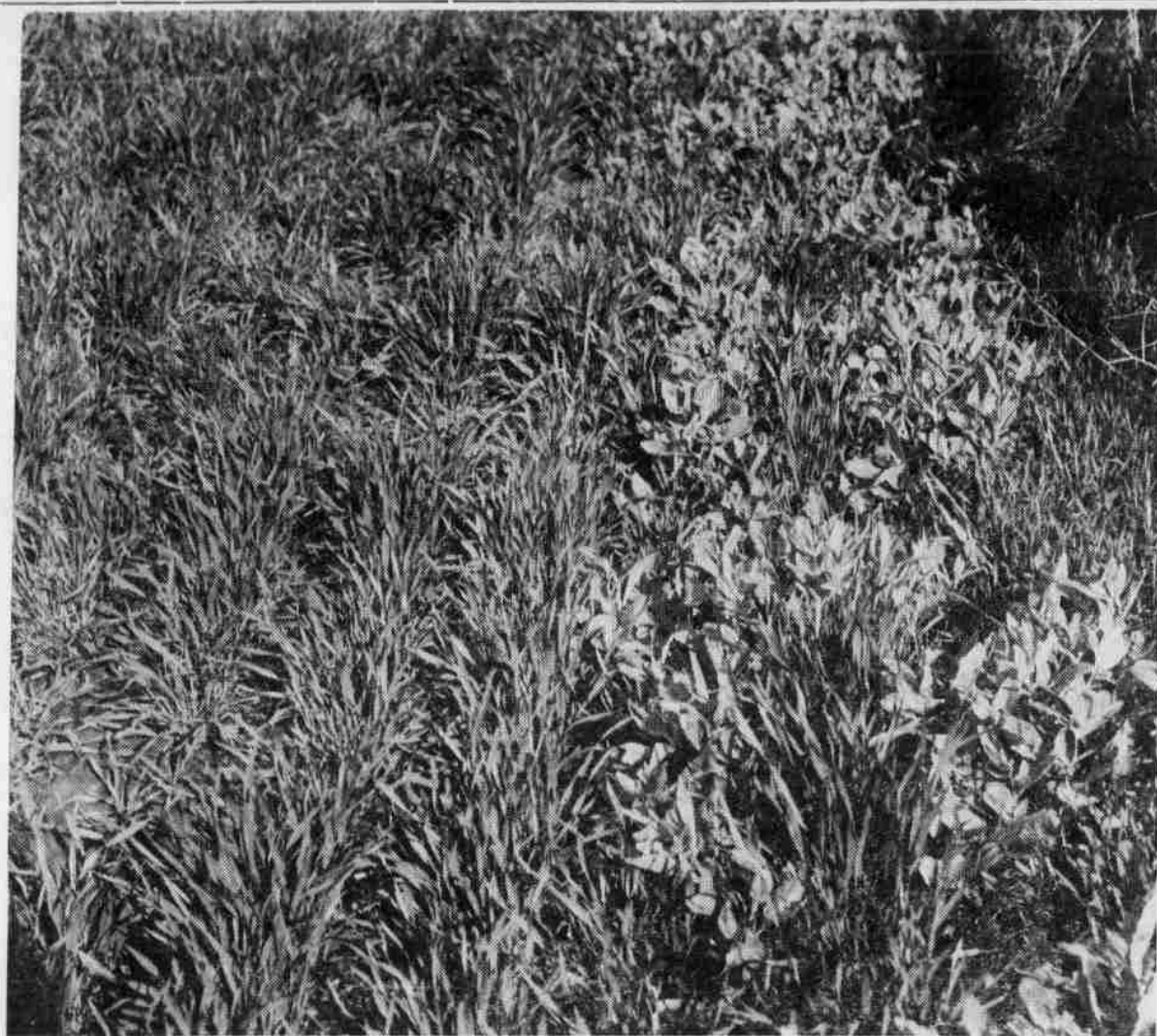
Coaches Will Be On Hand to Show You How to Punt, Pass and Kick. This Will Help You Prepare For PP&K Competition on October 12.



Heppner Auto Sales, Inc

HEPPNER, OREGON

PH. 676-9152



Note how one fall application of "Lorox" kept the area at left free of weeds. In the untreated area at right, purple mustard has already taken over.

Keep weeds down—wheat yields up with Lorox*

A single fall application of new Du Pont "Lorox" linuron weed killer eliminates competition of annual weeds at the early, critical stage of wheat growth. This makes the moisture, sunlight, and soil nutrients necessary for maximum yields available for the wheat...not the weeds. When you use "Lorox" you get:

- Increased yields—usually 10 bushels per acre or more.
- Control of a wide variety of weeds.
- Greater harvest profits.

Grower experience and research have found "Lorox" (introduced in 1967) to be highly effective in areas where rainfall is 10" or more annually. Order your supply of Du Pont "Lorox" from your local agricultural chemicals dealer today. *"Lorox" is Du Pont's trademark for 50% linuron weed killer.

With any chemical, follow labeling instructions and warnings carefully.

Non-cropland weed control

Eliminate weeds in non-cropland farm areas such as field edges, fence rows, and farmyards easily, effectively, and economically with a single application of a Du Pont herbicide. Your local agricultural chemicals dealer can tell you which Du Pont weed killer is best suited for your specific non-cropland need—"Lorox" linuron or Hyvar® X bromacil weed killers.



Better things for better living...through chemistry