

# Pacific Gas Transmission Plans \$1,778,000 Expansion at Ione

If Federal Power Commission approval is granted, Pacific Gas Transmission Company will construct a substantial addition to its gas compressor station plant at Ione, probably in 1969, Roger Thompson, public relations representative of the company, told members of the Ione Lions club and the Heppner-Morrow county Chamber of Commerce at a joint meeting in Ione Monday night.

He made the statement in a talk following a tour of the compressor plant near Ione with some 60 members of the groups participating.

Cost of the expansion is estimated at \$1,778,000. The present unit at Ione was constructed at a cost of \$2,400,000 with original estimate being \$2,369,000, Thompson said.

The present station was completed last year as a part of the company's project to increase capacity of the 1400-mile pipeline that taps gas fields in Alberta, Canada, and carries it to the San Francisco area for distribution.

With other compressor stations along the pipeline, the installations have brought the capacity to a present maximum of 650,000,000 cubic feet of gas per day. The planned expansion in 1969 would increase this to a potential ultimate of 850,000,000 cubic feet per day.

Arranged by the Lions club with Herb Ekstrom, president, the tour Monday evening started at the station at 6:30 p.m. Chet Bond, a field superintendent for this area with headquarters at Wallula, Wash., explained the operation with additional comments by Thompson, whose headquarters are in Spokane.

The instrumentation in the control building was explained with panels showing the pressure in the lines and other technical information. Control of the station is accomplished from Spokane through a microwave system.

The tour took the viewers to the metal building that houses the compressor and turbine, which uses fuel from the gas lines for its operation.

Gas comes from 22 fields in Alberta with pressure in the wells as high as 2,000 lb. per square inch. Maximum pressure in the line here is 900 lb. per square inch.

Thompson said that the Ione station has been operating exceptionally well and has gone continuously for 45 days without shutting down. It has been in operation for about a year since its completion.

Electricity at the station is used for instrumentation only, and a large auxiliary generator is housed in the control building ready to cut in within seconds after any power shutdown. The control system is so intricate that a large panel will indicate any kind of trouble anywhere, a light illuminating in

any particular section so that one may literally read what the trouble is.

After the plant tour, the group went to the Masonic Hall at Ione for dinner, then viewed colored slides of the long pipeline and heard commentary by Thompson and Bond.

The gas fields in Alberta cover 50,000 square miles, and they are still finding gas there, Thompson said. More is being found than is being produced. Some of the wells go to depths of 15,000 feet.

Pictures of the many compressor stations along the route were shown and described. Some of the problems of laying the line, such as encountered in

mountainous area so steep that the drop was 3,500 feet in a 2 1/2 mile stretch, were pointed out. Pipe was dragged up the mountain during construction by hooking several tractors together to inch their way up.

President Ekstrom presided at the dinner and the meeting afterwards, introducing guests of the Lions, and President Wes Sherman of the Chamber introduced Chamber members present. Women of the Topic club served the dinner.

As an entertainment feature following the dinner, the Lions showed a motion picture of the Green Bay Packers-Dallas Cowboys football game, played last winter.



REV. F. W. (MIKE) LUEDDE, JR.

## Special Service To Install Pastor

An Ecclesiastical Council will be held at the Ione United Church of Christ for the purpose of installing its new pastor-elect, Rev. F. W. (Mike) Luedde, Jr., on Sunday, September 29, at 4:00 p.m.

The Ecclesiastical Council consists of appropriate delegates of laymen and ministers from the Mid-Columbia Association of the United Church of Christ. Rev. Luedde will present his paper and will be questioned by the council and the congregation. The council will also review his credentials and the terms of his call. It will recess at approximately 5:30 p.m. and the Women's Fellowship of the church will serve a potluck supper in the church social rooms. Everyone is invited to attend this supper.

At 7:00 p.m. there will be a service of installation for Rev. Luedde. Clergymen taking part in the service include Rev. Melvin Dixon from the Methodist church in Heppner, Rev. Dirk Rinehart from the All Saints Episcopal church in Heppner, Rev. James McNeily from the UCC in The Dalles, Rev. Delbert McAmis from the Federated UCC in Milton-Freewater, Rev. Richard Trotter from the Condon UCC, and Dr. A. J. Buttrey, conference minister from Portland.

The deaconesses of the church will be hostesses for a coffee hour to be held in the church social rooms between 3:30 and 4:00 p.m.

Everyone interested is invited to attend these services and the potluck supper.

## Clerk is Elected To State Office

Mrs. Sadie Parrish, Morrow county clerk, was elected to the office of second vice-president of the Oregon Association of Clerks and Records at the annual convention held last week at the Hilton Hotel, Portland. This past year she served as secretary-treasurer of the organization. The Oregon association will be host to the national convention, to be held in Portland next year.

# High Percentage of 1968 Graduates Enter Colleges

College campuses and other schools of higher learning throughout the state are experiencing an influx of new and returning students with the start of the 1968-69 school year. Most state schools are enrolling students this week, with classes to get underway next week, after a week of orientation or rushing. Some of the private and non-state schools opened their doors earlier in the month and classes are now underway, such as Pacific University and Linfield College and some professional trade schools.

According to figures released this week from the Heppner High school office and Mrs. V. L. Latham, school counselor, who has steered many local students into the college channels, 37 of the 41 graduates of the class of 1968 are enrolling in colleges or taking advanced training, an exceptionally high percentage. Continuation of students in colleges is also noted as being very high.

Blue Mountain Community College, Pendleton, again at-

## New Cars Gleam At Local Dealers; 1969 Models Here

This is the big week for automotive buffs.

Gleaming new 1969 models have arrived at the three local automobile dealers and will be on display starting with showings Thursday and Friday.

This year, announcement of the Ford, Chevrolet, Pontiac, Buick, and Lincoln-Mercury lines all come at approximately the same time, and those interested in seeing the tempting new lines may make the tour at the same time.

Announcement day for some of the cars is today (Thursday) and for others it is Friday. However, by Friday all will be on display. This year there is no strike to handicap the showing, and dealers report that they have a pretty good representation of their lines in stock.

There are some additional models offered which are greeted enthusiastically by the dealers who have seen them, and they will be ready to pass the word to any who would like to hear of them.

Announcement ads of the new models are included in this page, some in section one and others in section two.

Royle Fullerton of Fullerton Chevrolet, Jim Farley of Farley Motor Co. and Earl Ayres of Heppner Auto Sales, Inc., all extend cordial invitations to the public to drop in, have a cup of coffee and see the new 1969 models.

## Johnson to Speak On Property Taxes

Bill Johnson, tax appraiser for Morrow county, will discuss the county's property taxes for the year 1968-1969 at the luncheon meeting of the Heppner-Morrow county Chamber of Commerce Monday in the Wagon Wheel Cafe banquet room.

Figures have been compiled for the county, and Johnson will have these available. Offices of the sheriff and assessor are now preparing tax statements for mailing, and it is expected they will be in the mail prior to October 15. Summaries have been printed, showing the tax breakdown for each code area, the assessed valuation of property, and other information.

## Civil Defense Sets Advisory Meeting

Meeting of the Civil Defense advisory committee of Morrow county will be Friday, October 4, at 7:30 p.m. in the basement of the county courthouse, Ted Smith, Civil Defense director, announces. Members of the county court and the director will attend.

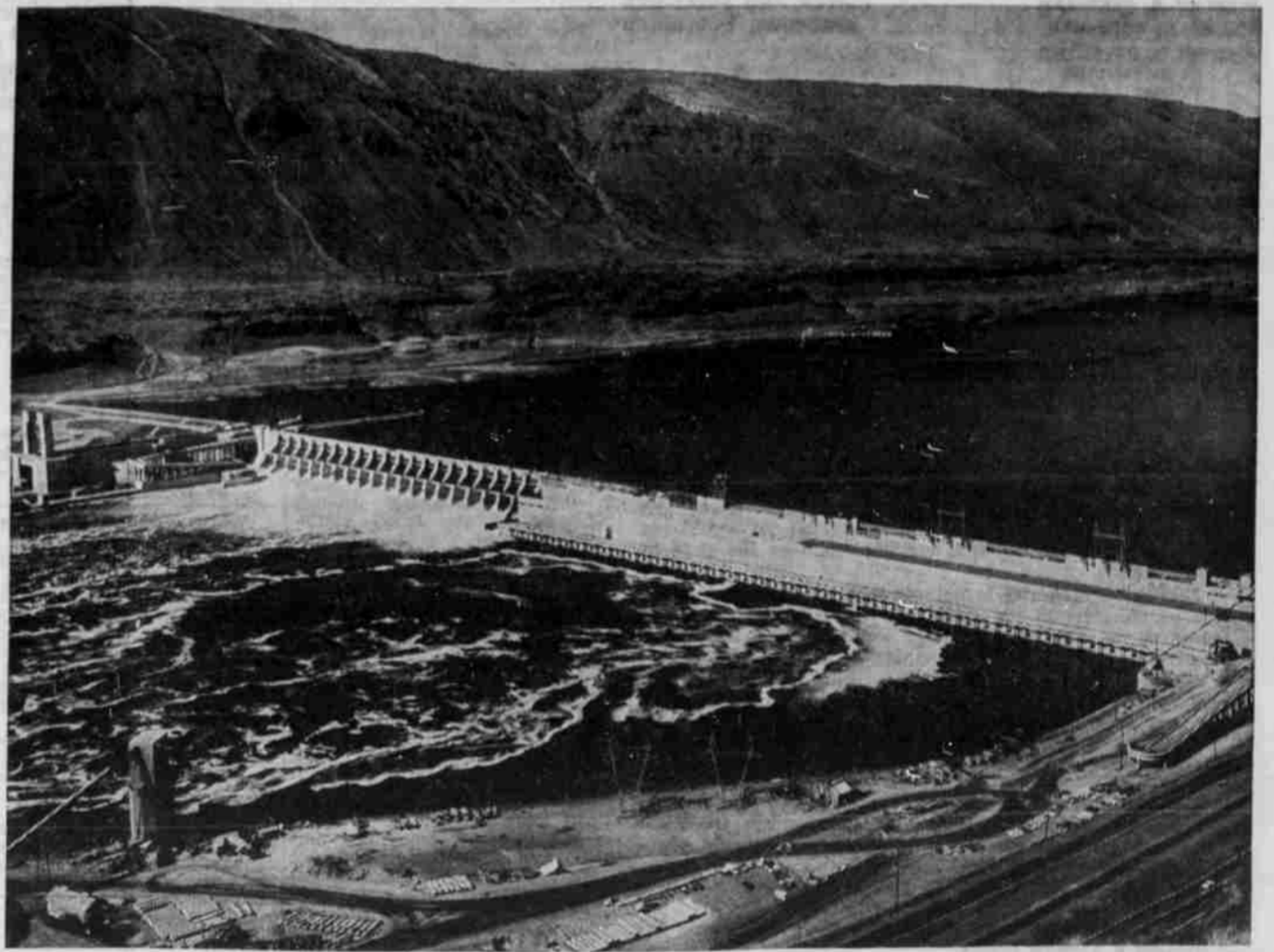
It is expected that the committee will mark in shelter areas on maps that have been prepared by the CD organization, Smith said. Every house in Heppner, Ione and Lexington are included on the maps, he added.

Morrow county has been allocated 1200 spaces in McNary dam as an emergency shelter and some space has been allocated in the John Day dam for the northwest part of the county in event of emergency, Smith said.

# THE GAZETTE-TIMES

Heppner, Oregon 97836, Thursday, September 26, 1968

10 Cents



VIEW OF THE JOHN DAY DAM looking upstream shows the navigation lock at the far left, connecting the Washington shore to the spillway section. A 1,975-foot-long powerhouse connects the spillway section to the Oregon shore. The projects' two fish ladders are visible next to the navigation lock and on the Oregon shore. For many years, the U. S. Corps of Engineers' project will be the largest and mightiest Columbia River dam, both in structural size and in power generation. It boasts the highest single-lift lock in the world. The project, which is scheduled for dedication on September 28, is operated by the Portland U. S. Army Engineer district.

# Public is Invited to John Day Dam Dedication

An invitation to witness history Saturday, September 28, at the dedication of the mile-long, \$448 million John Day Dam has been extended throughout the Pacific Northwest by Charles Baker and Andrew J. Cook, co-chairmen of the event.

"It is fitting that the world's largest multipurpose dam should be put into operation in

a grand manner, and we have scheduled activities accordingly and invited the most impressive group of distinguished guests the region will have ever seen," Baker revealed.

Activities will begin at 8 a.m. when the lock and north shore fish ladder are opened for public inspection. At the same time, the 86-foot Coast Guard cutter, "Point Glass" will tie up at the lock wall and will welcome visitors.

At 8:15 a.m. the combined high school bands from Arlington and Boardman, two Oregon communities which had to be completely relocated above the John Day Dam pool, will play

selections in the lock area. At 9:30, waters from 89 cities located throughout the Columbia River drainage area will be poured into the river to dramatize the relationship between power source and power producer.

The 21st Army Band from Ft. Lewis, Wn., will play at 9:35 and will open the official ceremony at 10:00 a.m. with the National Anthem.

Following the invocation, master of ceremonies Capt. Homer Shaver will introduce platform guests.

Governors Daniel Evans of Washington, Tom McCall of Oregon and Donald Samuelson of Idaho will give brief talks and then Senator Warren Magnuson of Washington will deliver the major dedicatory address. Two symbolic events have been planned to symbolize the dam's impact on Columbia River navigation and the Pacific Northwest power grid system. Upon a signal, spillway gates will be operated to change the flow over the spillway; and the navigation lock's lower gate will be raised to allow a tug and barge combination to pass downstream.

**Barge Moves Grain**  
The barge will contain 10,000 tons of grain and will represent the largest shipment ever transported along the upper river. Waiting below the locks for passage to the upper river will be the Pacific Inland Navigation Co. tug Tyco with a barge containing anhydrous ammonia.

With a maximum rise of 113 feet, the John Day Dam lock is the highest single lift navigation lock in the world. When the ceremony ends at noon, visitors will be invited to tour previously closed areas of the dam, including the powerhouse, spillway area and the

fish ladder on the Oregon shore. The latter offers a close look at fish swimming through a computerized counting passage-way.

Food and souvenir concessions have been organized and will be staffed by local non-profit organizations and groups.

**Townsite to be Shown**  
Arlington plans to show off its new townsite following the dedication by hosting an open house for everyone attending the ceremony. Located about 25 miles upstream from the dam, the town's 600 residents will prepare and serve an open-air smorgasbord lunch and provide entertainment. Senator Wayne Morse and Congressman Al Ullman will participate in the festivities.

An open house also will be held at Goldendale, Wn., 11 miles north of Maryhill on U. S. Highway 97. Food and entertainment are planned, and Pacific Northwest artists will set up displays along the town's streets. Baker said the list of platform guests is already one of the most impressive ever compiled for a Pacific Northwest event and is growing daily as acceptances are received.

## Big Crowd Seen For Ullman Visit

Many reservations are coming in for the luncheon for Congressman Al Ullman to be held in the Wagon Wheel Cafe banquet room here Friday at noon, according to Mayor W. C. Rosewall, who is making arrangements for the luncheon.

He said Tuesday that there may be room for a few more who may wish to attend the no-host luncheon. Those who have not already made reservations may do so by calling Rosewall at his home. The luncheon will be \$1.50 per plate.

Cong. Ullman has a very busy schedule this week and may not stay in Heppner overnight Thursday as originally planned, the mayor said. He is to speak at a luncheon in John Day at noon Thursday and has a dinner meeting in Ukiah Thursday evening. Later in the evening he will be at a meeting in Pendleton.

On Friday morning, he will speak at the Heppner High school, starting at 10:15. Mayor Rosewall will preside at the luncheon here. It is expected that the event will be over at 1:30 following a question and answer period.

## Gridders Slate Enterprise Game

After a week's layoff, Heppner High's football team will travel to Enterprise Friday night for their opening league game. The Mustangs tripped Condon here on September 13 in the non-league opener, 26 to 0, and though a young team, looked quite impressive.

Enterprise has proved tough for Heppner, especially on the "Savages" field, in the past, but the boys of Coach Ed Hiemstra are hoping to start the league season on a winning note.

All remaining games on the Mustangs' schedule are counters in this year's new Greater Oregon round robin. However, the Heppner eleven does not return to the home field until October 11 when they face Burns here under the lights. They play at Sherman Friday night, October 4, at 8 p.m.



TOM BEAM

## Thomas L. Beam Joins Bank Staff

Thomas L. Beam has joined the Heppner branch of First National Bank of Oregon as operations officer, according to John Venard, branch manager. Beam joined the statewide banking system at its Baker branch in May of 1966 as a commercial bookkeeper and in November of that year became a commercial teller. In September of 1967 he was promoted to pro assistant cashier and began working in an operations capacity.

The new operations officer is a member of the American Institute of Banking. He and his wife, Carol, have two children.

tracts the largest number of last year's graduates. Starting their college work there are Linda Heath, Kathy Mathews, Mary Pierce, Vickie Robinson, Douglas Drake, Matt Hughes, Randy Strilman, Earl Struckmeier, Brenda Steagall and Helen (Anderson) Cooper. Those reported as returning are Erin Dick, Gail Malcom, Teresa Monahan, Gineger Majeske, Ray Jones, Teensie Moore, Jim Doherty, Mac Hoskins, Allyn Witherrite, Stan Rauch, Mark and Trisha Halvorson.

Five '68 graduates who plan to enroll at Eastern Oregon College of Education at La Grande, include Earl Ayres, Bill McLeod, Christine Munkers, Debora Young and Tim Loyd. Those returning to EOC include Brenda Young, Leslie Meador, Stuart Dick, Bruce Thomson, Patti Collins, Tim Smith, Bob Harris, Jean Healy, Tom Green, Susan Lindstrom and Marty Boyajian. Heppner High school will be represented at Southern Oregon College in Ashland by four freshmen, Paula Siewert, Jim

Sherman, John Van Winkle, and Billy Stockard.

Four graduates of last year who will enter Oregon State University in Corvallis, are Frances Abrams, Ruby Ann Fullerton, Merri Lee Jacobs, and David Hall (spring term). Also at OSU will be Tim Driscoll, Tom Rawlins, Steve Anderson, Lee Daggett, Eric Anderson, Chris Brown, Wayne Evans, Erna Lynn Winchester, Maralee Murray, Mark Murray, Verina French, Karen French, Carol Rawlins, Gayle Batty, Karen McCurdy, Mike Sweek, David Matheny, Joan Stockard, Cheryl Smouse, Steve Wagenblast and John Wagenblast.

Choosing the University of Oregon in Eugene for their first year are Bob Doherty, Nancy Doherty, Russell Kilkenny, Sheila Luciani, Steve Pettyjohn and John Rawlins. Returning to U. of O. for further study are Judy Jones, Jeff Turner, Jim Jacobs, Mike Sweeney, Jerry Stefani, Martha Peck, Margaret Green, Mark Brown, Jean Stockard, John Cox, Tony Doherty, Jean Siewert, Carl Bauman, Martha

Doherty and Ray Nichols.

Enrolled at Pacific University, Forest Grove, are Kathy Melby and Marsha Sowell, sophomores, and Don Majeske, senior.

Starting her second year at Linfield College, McMinnville, is Nonda Clark.

Frank Lovgren, of the class of '68, will enter Treasure Valley Community College in Ontario, and taking his second year there is Dennis O'Donnell. Bonnie Lee Kessel will be a first year student at Oregon College of Education, Monmouth.

Marsha Lovgren will be in training at Weaver Airline Personnel School in Kansas City.

Susan Starks has chosen Northwest College of Business in Portland for further training.

Rita Pettyjohn will be training at Pendleton College of Beauty.

Terry Corbin will study at Portland Community College. Lou Ella Roark will be a freshman at Portland State College. Taking pre-law studies there will be Doug Anderson, Norita Marquardt of last

years' class is enrolled in post graduate studies at Heppner High school.

Marti Dixon will complete her studies this year at Seattle Pacific University.

Jim Barclay is returning to the University of Portland for his junior year; Tim Tullis will reenter Lewis and Clark College; Gene Hilliker has been studying at Willamette University.

Two Heppner girls, Susan Drake and Sheridan Wyman, are in nurses training in Portland.

Mike Warren returns to Brigham Young University, Salt Lake City.

Among those taking graduate work is Bill Sherman, who is enrolled at Gordon Divinity School in Wenham, Mass.

Among the young men who have entered the military service the past year are Robert Van Winkle, Don Munkers, Mickey Kindler, Mike Pierce and LeRoy Gardner.

The Gazette-Times would appreciate hearing of others who are in college or recently entered the armed services.