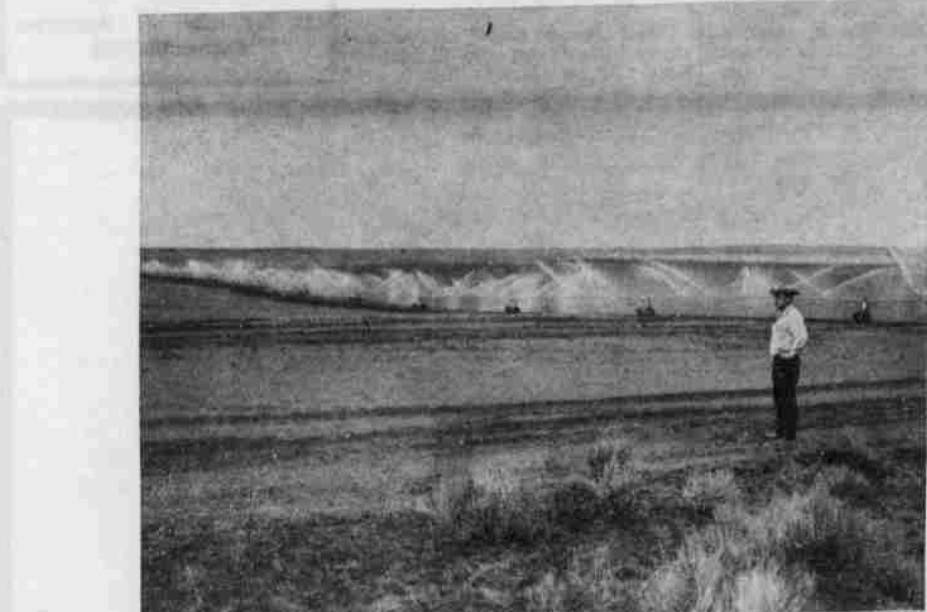


# Power--Irrigation--Industry

# River Use Stirs Competition



IRRIGATION, INDUSTRY AND POWER go hand in hand in the planning for development of the area, conservationists declare. Pictured at the top is the Chevron Chemical Co. plant on the Columbia River at Pasco. Lower photo shows a typical sprinkler system. Yet to come is a picture of the now-proposed thermal nuclear electric power generation plant that would complete the presentation of Industry, Irrigation, and Power. (Chevron Chemical Photo courtesy Tri-City Herald).

By KEN TURNER

Not until California openly told us they wanted the Columbia River did Morrow county assess the value of this resource in regard to irrigation and industry.

But Californians aren't the only competitors. The Grand Coulee-Columbia Basin project of Washington, a success story for two decades, is increasing

its use of the river quite fast. Idaho is doubling its pumping from the Snake River every few years.

Even our neighboring counties have big plans to pump from the Columbia. Add to this the volume river needs of the existing hydro-electric dams, commercial and sports fishing claims, water quality control, and navigation requirements

and you find the mighty Columbia shrinking to a stream. The idea that surplus water exists for diversion to the Southwest after the ultimate needs are met in the Northwest is held ridiculous by many authorities. And at the same time it is going to be tough for Morrow county to get a piece of the pie, too.

Local people will need to

work hard to bring outside investment for development of irrigation and industry. Study thus far has shown that we need a marriage of a local power generator, some large electric consuming industries with irrigation pumping sandwiched in the package. Then to fully develop irrigable lands of North Morrow county, a large Reclamation project would probably be needed. This is the formula that developed such areas in the Southwest and the state to our North.

Since we still have the unclaimed water with its potential power and industrial sites we must stake our claim and get involved. This presents an awesome challenge when you weigh the political realities and consider our sparse population competing with the big going establishments.

An irrigation impoundment on the Rhea Creek watershed is sponsored by the Heppner SWCD. But it has only progressed to the point that an application has been filed. No feasibility survey or planning has been done, though it is felt that Rhea Creek will provide a worthy project. Here again sharp competition for funds will require concerted effort by local people. The following BOX SCORE shows this.

## What Difference Does Water Make? 17 to 1

The following study should answer many questions about irrigation's vast potential. With less than 1/3 of Morrow high school graduates being able to find employment in the county this may be the avenue for growth we need.

A study by the extension service of Washington State University completed recently compared 10,000 acres of irrigated cropland in the Columbia Basin to 10,000 acres of neighboring dry land. It showed about 17 times as

many people supported from the same area of cropland in the irrigated regions as in the dryland wheat-summer fallow region.

The charts reproduced here show several other comparisons.

Indicator	Project Area	Comparison Area	Ratio
	Per 10,000 Acres of Cropland		
Population	1,900	110	17 to 1
Business establishments	48.1	2.8	17 to 1
Workers 1/	480	22	22 to 1
Wages	\$2.17 Mill.	\$.11 Mill.	20 to 1
Property tax base 2/	\$2.57 Mill.	\$.40 Mill.	6 to 1
Postal Receipts	\$16,700	\$960	17 to 1
Federal Income Tax Payments	\$714,400	\$41,300	17 to 1

1/ Does not include farm operators  
2/ Data for 1962

### BOX SCORE ON PUBLIC LAW 566

The West Sunnyside Watershed Project, comprising 5,450 acres in Plymouth County, Iowa, has been approved for operations under P. L. 566, the Watershed Protection and Flood Prevention Act. Here is the current status of all projects:

Total applications to date	2,689
Authorized for planning	1,348
Approved for operations	827
Under construction	402
Construction completed	191
Projects completed	165

## Conservation Problems Changing; Resource Planning Need Emphasized

By DICK McELLAGOTT

When soil conservation districts were being formed more than thirty years ago vast areas were in danger from wind and water erosion.

These problems still remain with us but to a much lesser degree. We have come to realize that we must also consider our water supplies, not just as a local concern, but also as a regional and a national concern.

Now, as we attempt to look into the future and consider the effect of population pressures upon our environment, we are to the point where we must attempt some guidelines for the use of all our resources.

Year after year we see many thousands of productive agricul-

tural lands being diverted from agricultural use. With a steady growth of our national and world populations we must question the wisdom of a tax policy that encourages or forces this diversion from agricultural use.

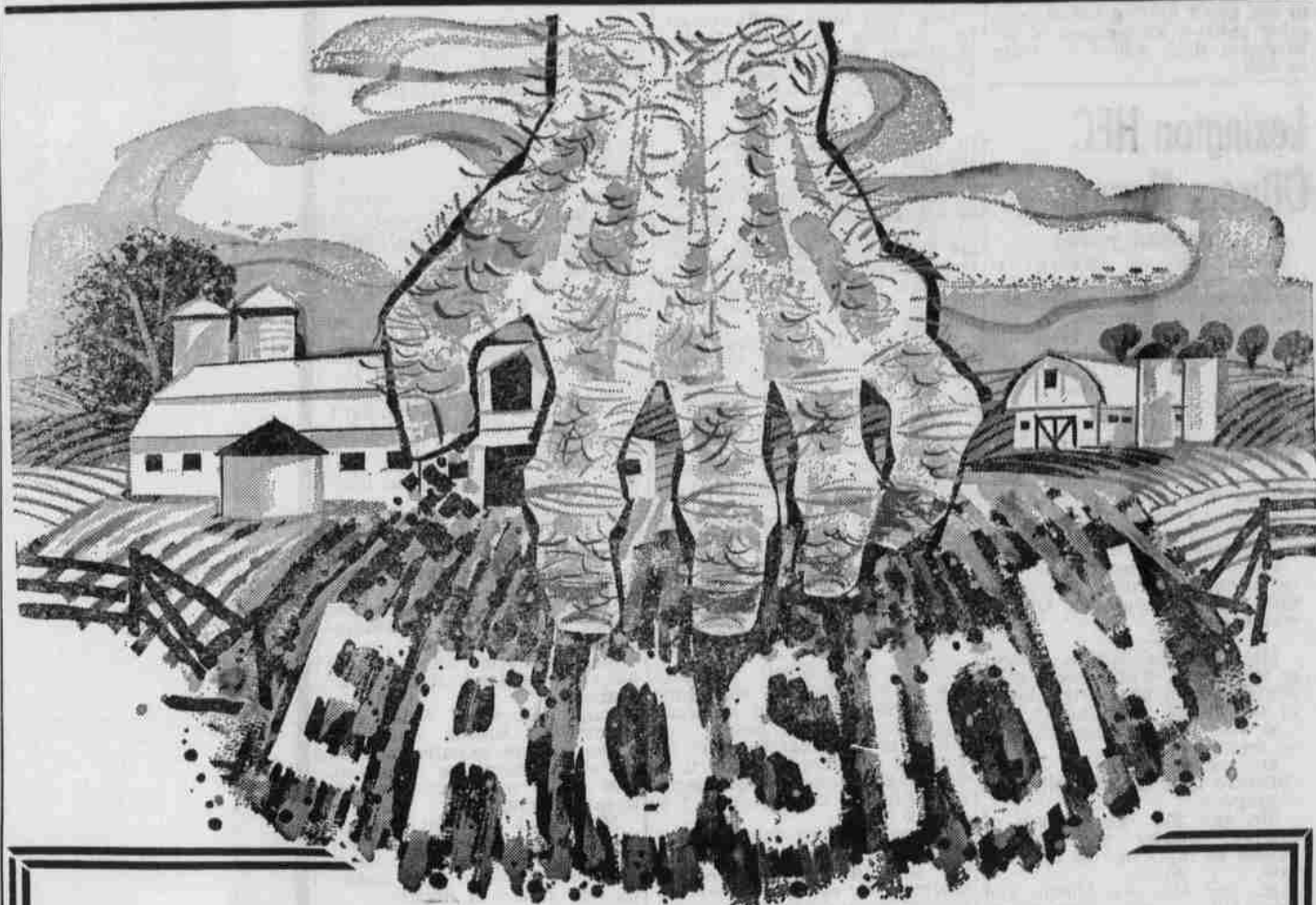
We see too many areas being turned into sprawling subdivisions and too much land being cut up by highways. With the increased population there comes great pressure for the creation of parks and recreational areas, but perhaps the saddest waste of all is the spawning of eyesore regions around our towns and cities.

These are the areas where high property taxes and desire for land leads to the fragmen-

tation of productive farms. Here we see unzoned and unplanned growth, shanties, wrecking yards, abandoned junk, etc.

The need is for resource planning to attempt to determine best long term use for all our natural resources. This is, of course, too ambitious a program for our local SWCD's, but we certainly ought to work with our county court, the port commission, our planning boards and our neighboring districts and governmental agencies.

I think that the work of the Columbia Blue Mountain Resource Conservation and Development Project is a step in the right direction and worthy of the support of everyone in our area.



## Don't Let It Get a Grip On Your Farm and Your Future...

Erosion, the greedy grabber, snatches more than soil. This common threat to land reaches out to destroy farm productivity, and thereby gets a grip on your farming future. Both your personal prosperity and your community's growth can depend on sound soil conservation practices. Tested techniques to conserve, maintain and improve your soil make a big difference. Fight erosion now!

THE FOLLOWING IONE SPONSORS URGE YOUR SUPPORT OF GOOD CONSERVATION PRACTICES:

DOBYNS PEST CONTROL	BRISTOW'S MARKET
CHARLES O'CONNOR	T & C STORAGE
BANK of EASTERN OREGON	RIETMANN'S HARDWARE
EKSTROM FARM CHEMICALS	STONE MACHINERY
BI-COUNTY CHEMICAL	