

# OPEN HOUSE

AT

# PIONEER MEMORIAL HOSPITAL

## 12:30 to 4:30 SUNDAY, JUNE 11

Just 17 years ago—on June 11, 1950—the new Pioneer Memorial Hospital was dedicated. On the occasion of this anniversary, we extend a cordial invitation to the public to our open house. We welcome everyone to

come between the hours of 12:30 and 4:30 p.m. for a visit. Guided tours will be provided so that you may inspect the facilities of your hospital.



### A Word From WILL O'HARRA—Administrator

When Pioneer Memorial Hospital opened its doors 17 years ago, it was the result of cooperative effort of the many who recognized the great need for a hospital to serve this area.

Since that time, its operation has been marked by cooperative effort and it has fulfilled all expectations in service.

A total of 17,945 patients have been treated at Pioneer Memorial hospital. Its fine facilities, coupled with a skilled staff of doctors and nurses, have been responsible for saving many lives. It has relieved suffering to a degree that cannot be measured. It has provided immediate treatment for those in the area it serves when delays in transportation to more distant points might have resulted in fatalities or serious consequences.

The importance of the hospital has been emphasized time and time again in the hundreds of "thank you" notes and words of appreciation from those who have been dismissed as patients. Seldom does a week go by when a card of thanks is not printed in the Gazette-Times as an expression of appreciation by a grateful patient for the medical care and treatment offered and extended here.

On this occasion, we want to say "Thank You!" for these fine kind words. They have brought added encouragement and meaning to our work.

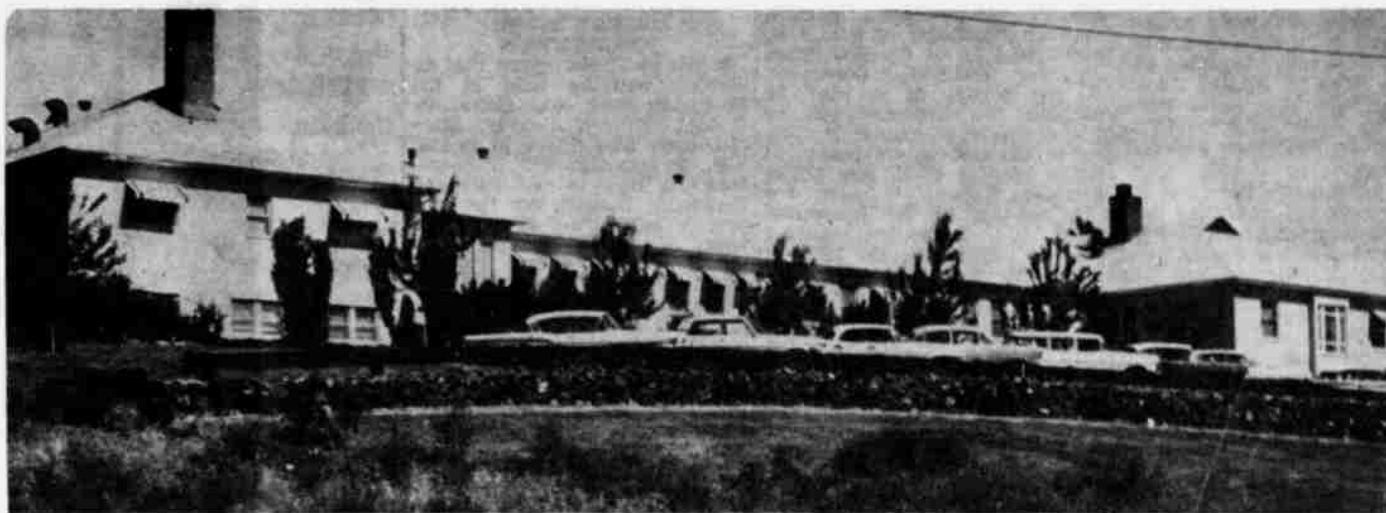
At the same time we believe that the people we serve are "something special," too. We think their attitude, their cooperation and their gratitude make them easier to treat and care for than people in some other areas.

The assistance and support of the hospital through these years has been very gratifying. Many individuals, organizations and businesses have made generous contributions in money, equipment and service. The county court has given excellent cooperation.

While the primary role of the hospital is to serve through care to the ill and injured, it is important to the community economically, too. It costs approximately \$250,000 per year to operate, and it is very close to being self-supporting. Average annual help from county taxes has been less than \$10,000, although \$23,000 is provided in the county budget this year to take care of some additional needs. Some \$156,000 per year in payroll is fed back into the community, and the bulk of the entire cost of operation is spent locally.

We're proud of our hospital—as you must be, we're proud of the people we serve; we appreciate the spirit all our people and organizations have shown towards us, and the cooperation they have given. We'd like the opportunity of saying "Thank you" when you come to our Open House Sunday.

### Our Building . . .

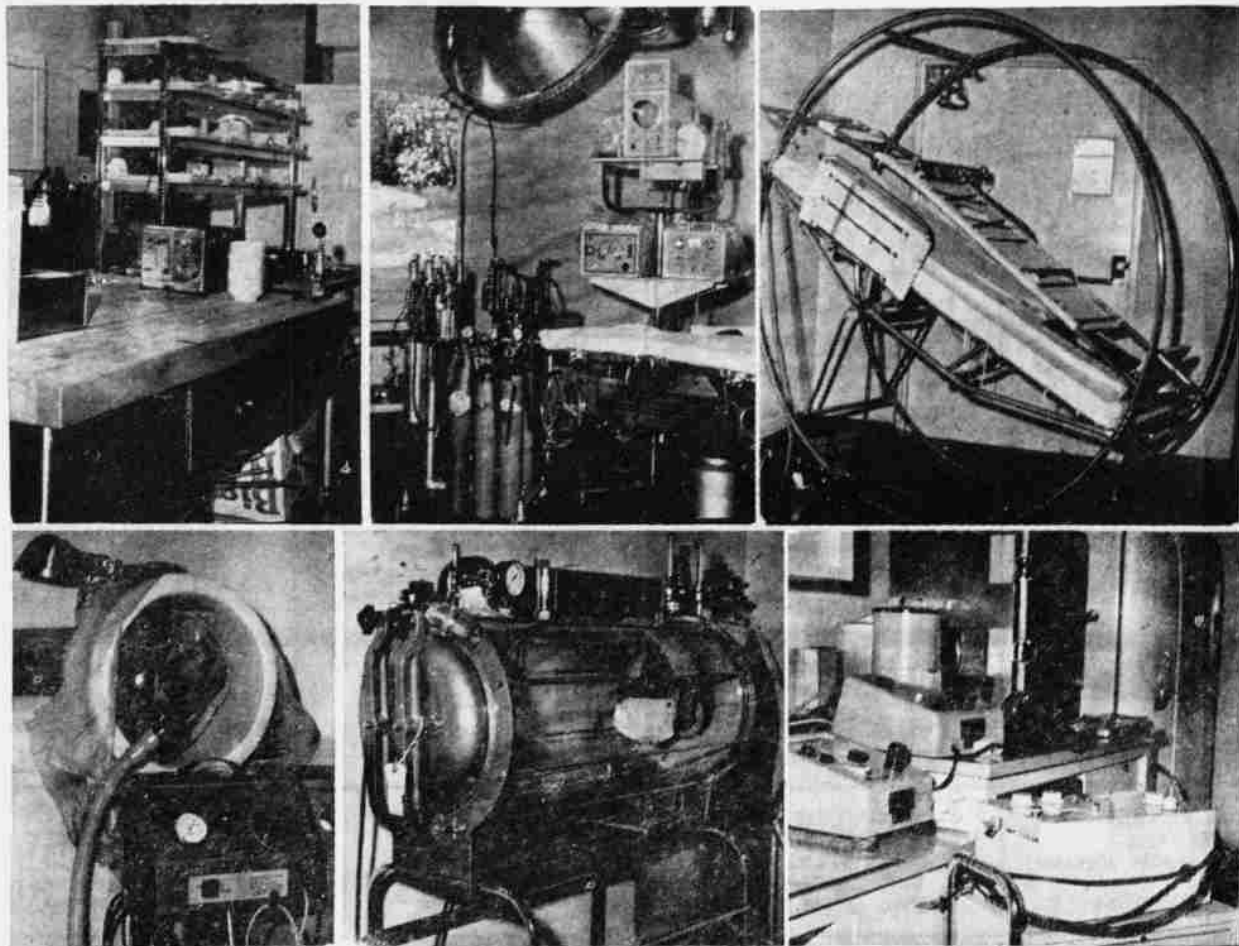


### Our Staff . . .



DAY SHIFT—Seated, Maxine Warren, Housekeeper; Sue Vinson, Housekeeper; Raylene Britt, Laundress; standing left, Edna Struthers, Nursing Aid; Stella McCarthy, Cook; Linda Grindstaff, Nursing Aide; Leona Hale, Nursing Aide; Maxine Schmidt, Surgery Aide; Joan Grey, Nursing Supervisor; Charlotte Sparks, Nursing Aide; Nadine O'Brien, Office; Evelyn Sweek, Head Cook; Helen Becker, Consulting Dietitian. Not pictured on this shift are: Ilene Wyman, Office Mgr.; Edna Bailey, Kitchen; Gladys Conner, Kitchen; Claudia Campbell, Kitchen; Patty Prock, Office; Wilma Hill, Housekeeper; Alta Pierce, Kitchen; Nedra Smith, R. N.; Betty Bailey, Nursing Aide; Edith Case, Nursing Aide; Anna Schwarzin, L.P.N.

### Our Up-to-date Facilities . . .



THESE PHOTOS show some of the facilities at Pioneer Memorial Hospital. Upper left, view of kitchen; upper center, surgery; upper right, 'squirrel cage' bed for patients with back injuries. Lower left, Emerson 'Birthex' in obstetrics ward, a gift to the hospital from a private donor; lower center, an airlock in delivery room; lower right, equipment in the laboratory.



NIGHT SHIFT—Barbara Jessmer, Nursing Aide; Hattie Harndon, Nursing Aide; Joyce Cross, R. N. Not pictured on this shift are: Pat Eubanks, Nursing Aide; Fay Pierce, R. N.; Bettie Doherty, R. N.; Ruby Munkers, Nursing Aide.



EVENING SHIFT—Claire Anderson, Nursing Aide; Frank Conner, Maintenance; Ruth Ann Casebeer, R. N.; Bob Lowe, Engineer; Mollie Harris, Nursing Aide; Marilyn Robison, Nursing Aide. Not pictured on this shift are: Jean Ruhl, R. N.; Ethel Rose, R. N.; June Alsup, Nursing Aide; Sophie Ayres, Nursing Aide; Bonnie Kessel, Office; Marsha Sowell, Office.