

**STEWART'S TOWN 'N COUNTRY**

STORE HOURS: WEEKDAYS: 9:00 a.m. - 8:00 p.m.  
SUNDAYS: 10:00 a.m. - 7:00 p.m.

# Come On In for **LOTS MORE** **LOW PRICES**



It's a fact! More of everything your family likes to eat costs less at Stewart's! That's because for every fine quality food item on our shelves there's a **LOW PRICE** at our check-out! We do it by being as careful in our buying as you are in yours... As economical in our storekeeping as you are in your housekeeping. So if you're looking for a way to cut your **TOTAL FOOD COST**... Take a look at the Super Savers in store for you at **STEWART'S TOWN & COUNTRY**.

FRESH WHOLE FROZEN BODIED

## FRYERS

**29<sup>c</sup>**  
lb.



LITTLE PIG LINK SAUSAGE lb. **69<sup>c</sup>**

Buy 'Em By The Case, Fill Your Freezer!

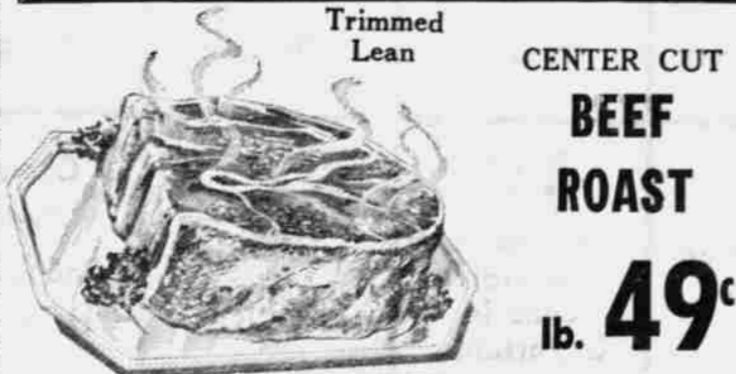
CORNISH GAME HENS each **79<sup>c</sup>**

HEAVY ROASTING HENS lb. **49<sup>c</sup>**

BONELESS STEW BEEF lb. **69<sup>c</sup>** | YOUNG STEER BEEF LIVER lb. **49<sup>c</sup>** | Franks 2 lbs. **99<sup>c</sup>** | Hill's Old Time 5 lb. box **\$2<sup>69</sup>**

FRESH - LEAN **GROUND BEEF** OR COUNTRY STYLE **PORK SAUSAGE** **3 lbs. \$1<sup>39</sup>**

HILL'S SLICED BOLOGNA lb. **49<sup>c</sup>**



Trimmed Lean CENTER CUT BEEF ROAST lb. **49<sup>c</sup>**

LEAN - MEATY SHORT RIBS 3 LBS. **\$1**

LEANER Ground Chuck lb. **59<sup>c</sup>** | ROUND BONE Swiss Steak lb. **69<sup>c</sup>**

LEANEST Ground Round lb. **69<sup>c</sup>** | LEAN - TENDER T-Bone Steak lb. **98<sup>c</sup>**

Buddig's Chipped Luncheon Meats 3 pkgs. **\$1**

ARMOUR'S STAR SLICED SLAB BACON

lb. **69<sup>c</sup>**

**Stewart's**  
Town and Country  
**SUPER MARKETS**  
•Pendleton •Umatilla  
•Hermiston •Pilot Rock



## REAL SAVINGS FOR YOUR **LOCKER**

UMATILLA COUNTY GRAIN - FED **LOCKER BEEF** FULL SIDES lb. **49<sup>c</sup>**

Front Qtrs. lb. **43<sup>c</sup>** Hind Qtrs. lb. **59<sup>c</sup>**

Here's a real special for the small families or the family that just doesn't want to buy a full half of beef, but wants to join many other customers in the savings enjoyed through **LOCKER BEEF SPECIALS**.  
100-lb. Order Locker Beef **\$49<sup>00</sup>**

Umatilla County GRAIN - FED **LOCKER PORK** WHOLE HOG **39<sup>c</sup>** or FULL SIDES lb. **39<sup>c</sup>** Pork Sh'lders lb. **39<sup>c</sup>** Pork Loins lb. **59<sup>c</sup>**

**ALL PURCHASES WILL BE CUT & DOUBLE WRAPPED FREE!!** Terms Available On Approved Credit, Up To 3 Months To Pay

## STEWART'S QU



U.S. NO. 1 DRYLAN **POTAT**

SUNKIST NAVAL ORANGES 8 lbs. **\$1**

LOCAL RHUBARB lb. **19<sup>c</sup>**

LARGE CREAMY AVOCADOS each **10<sup>c</sup>**

RED SLICING TOMATOES lb. **29<sup>c</sup>**

BARK DUST 2 1/2 cu. ft. **99<sup>c</sup>** | PEAT

NO. 2 ASS'T COLORS AND TYPES EACH

**Rose Bushes**