



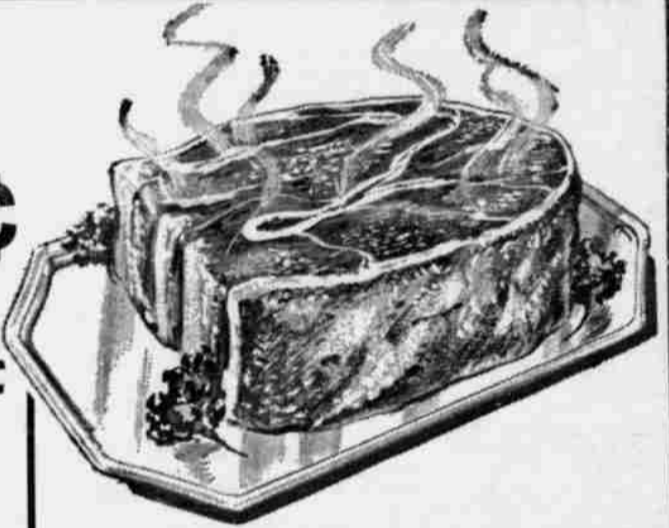
SURE I SHOP AT STEWART'S

*Don't
YOU?*

Bakery Treats
DANISH PASTRY
 Ea. **5^c**
APPLE PIE
 Ea. **49^c**
 NESTLE'S MILK CHOCOLATE
 OR MILK CHOCOLATE WITH ALMONDS
CANDY BARS
 Package
 of
 10 Bars **39^c**

Lean, Well-Trimmed
CHUCK STEAK Lb. **59^c**
 Hill's Old Time **LARGE FRANKS** 2 lb. **89^c**

CENTER CUT
BEEF
ROAST Lb. **59^c**



- Full Cut **ROUND STEAK** ... Lb. **89^c**
- Lean Fancy **RIB STEAK** Lb. **79^c**
- Round Bone **BEEF ROAST** Lb. **69^c**
- Boneless Beef **RUMP ROAST** ... Lb. **89^c**
- Boneless Sirloin **TIP ROAST** Lb. **89^c**
- Fresh Lean **Ground Chuck** ... Lb. **69^c**
- Fresh Lean **Ground Beef** Lb. **49^c**

LOCKER BEEF SPECIAL
 Full Sides **Lb. 49^c**
 CUT AND WRAPPED FREE

ATTEND THE DANCE
 For
RODEO PRINCESS MARDEE CHILDERS
 FAIR PAVILION, SAT., JULY 16, 9:30

- Country Style **PORK SAUSAGE** . Lb. **49^c**
- Mild Bulk **Cheddar Cheese** . Lb. **69^c**
- Young Steer **BEEF LIVER** Lb. **59^c**
- Rock Cornish **GAME HENS** Ea. **79^c**
- Armour Star **Sliced Slab Bacon** Lb. **89^c**

- NABISCO **GRAHAM CRACKERS** ... 2 Lb. BOX **65^c**
- SUNSHINE **HI HO CRACKERS** 4 10 OZ. BOXES **\$1**
- REYNOLDS **ALUMINUM FOIL** 25 FT. ROLL **42^c**
- DUNN'S LARGE JAR **BONED CHICKEN** 10 OZ. JAR **89^c**
- NALLEY'S **CHICKEN RAVIOLI** ... 2 1/2 LB. TIN **69^c**
- NALLEY'S **BEEF RAVIOLI** 2 1/2 LB. TIN **69^c**
- NALLEY'S **LASAGNE** 2 1/2 LB. TIN **79^c**
- NALLEY'S **MUSTARD** FULL QT. **39^c**
- DUNDEE **PORK & BEANS** 5 2 1/2 TINS **\$1**
- FINER CAT or **DOG FOOD** 12 Tins **\$1**
- BLUE MOUNTAIN **100% HORSE MEAT** 4 15 OZ. TINS **\$1**
- BLUE MOUNTAIN **100% CHICKEN** 5 15 OZ. TINS **\$1**
- BLUE MOUNTAIN **KITTY O's** - - - - 3 16 OZ. PKGS. **\$1**
- HARTZ MOUNTAIN **Aerosol NO!** KEEP PETS OFF SHRUBBERY **98^c**

U & I
SUGAR 10 Lb. Bag **89^c**
 OCCIDENT HARD WHEAT
FLOUR 10 Lb. Bag **89^c**
 PLASTIC 54" x 72"
TABLE CLOTHS Reg. \$1.29 **98^c**
 HILL'S BROS.
COFFEE \$ **1.99** 3 Lb.
 1 LB. **69^c** 2 LB. **\$1.37** HILLS BROS. Instant 6 OZ. JAR **99^c**
 ARDEN'S **COTTAGE CHEESE** - - - PTS. **19^c**
 ARDEN'S **ICE MILK** - - - - - 1/2 GAL. **49^c**

Lady Hudson **POTATO CHIPS**
 TRIPLE PAK **59^c**
 Jen's **PIZZA Sausage Flavor** 17 OZ. PKG. **59^c**
Cheese Flavor 15 OZ. PKG. **49^c**

First Quality
BANANAS lb. **10^c**
 Sunkist **LEMONS** Doz. **69^c**
 Solid Head **Lettuce** lb. **15^c**
 ZUCCHINI **SQUASH** 2 lb. **29^c**
 SWEET YELLOW **WAX ONIONS** ... 2 Lb. **29^c**

STEWART'S
 Town and Country
SUPER-MARKETS
 PENDLETON · HERMISTON · UMATILLA

WE CASH PAYROLL CHECKS - WE SELL MONEY ORDERS - WE HAVE THE BEST BOX BOYS
 WE HAVE THE BEST CHECKERS - WE GIVE GREEN STAMPS - WE APPRECIATE YOUR BUSINESS