

## County's Grain Damage by Freeze High in Barley

By GENE WINTERS  
County Extension Agent

Freeze damage to Morrow county's 1966 wheat and barley crop was appraised last week. At the request of USDA, the writer sampled wheat plants in nearly 40 fields of wheat in all of the wheat growing communities of the county. In practically every sample the embryonic head in the various stages of development appeared healthy.

This was not true of the winter barley which was in the boot or coming out of the boot when the freeze occurred. The severely damaged plants and parts of fields are now easily seen. An examination of emerged heads from apparent healthy plants show that there may be some damage. This would be by partial filling of the heads.

A well-timed rain could offset any losses now showing by increasing the yields from those plants not damaged.

### Correct Uses of Chemicals Reduces Cut Worm Infestation

Last week another problem made itself known with the discovery of cut worm damage in barley. This particular unidentified species of cut worm is closely related to the wheat head worm being about 1 1/4 inches long, having a greenish body with reddish head and a brown cap.

It has been observed in the low spots of fields. This year faded spots due to cut worm activity may be attributed to drought or freezing.

This particular pest feeds at night and may be found during the daylight hours in the surface 1/4 inch of soil.

Two materials are recommended for chemical control when the infestation warrants

treatment. Both DDT and Toxaphene have given good control at recommended rates.

When toxaphene or DDT is used, do not feed the treated forage to dairy animals or animals being finished for slaughter.

Do not apply DDT after the heads appear. Using the scale of estimated acute toxic hazard of pesticides to sprays; most dangerous, dangerous, less dangerous and least dangerous we find DDT among those chemicals as least dangerous and toxaphene rated as among those less dangerous.

In every case insecticides (as well as other pesticides) should be applied according to the directions on the label. Whenever agricultural chemical applications are made it is a good idea to make a permanent record of the application. Several companies have these forms available for such use.



FRED SCHNEIDER

## Fred Schneider Slated to Speak To Association

Pacific Northwest Crop Improvement association will hold its annual meeting in Walla Walla on May 18 at 9:30 a.m. in the Marcus Whitman Hotel.

The Oregon Wheat Growers League was one of the original founders of this organization.

On the program will be two panel discussions with the personnel coming from Oregon State University, U.S.D.A., Washington State University, and University of Idaho. Ron Rew of Pendleton, and a member of the Oregon Wheat Commission, who recently returned from a trip in Asia, will discuss market possibilities for wheat and problems involved in that area. Fred Schneider, Western Wheat director in the Philippines, will also appear on the program.

An excellent program has been arranged for the one-day session including last minute information on disease conditions and the general development of the wheat crop in the entire area.

In recent years most of the annual meeting programs have been devoted to reports by wheat breeders on prospective varieties in the three states. This year the emphasis will be on agronomic factors and plant diseases. Foot rot, flag, nut, snow mold, powdery mildew, and strip rust will be some of the problems considered. Comments will be induced on the effect of each disease on currently popular wheat varieties. Profitable seed practices will also be another subject featured on the program.

## Ekstrom Ranch To Sponsor Beef Field Day Sunday

By GAIL McCARTY  
County Extension Agent

Herbert Ekstrom of Ione is sponsoring a 4-H Beef Field Day on his ranch this Sunday, May 15, starting at 1:30 p.m. The Ekstroms will demonstrate their new hoof trimming table and give club members points on trimming hoofs, feeding and clipping beef animals for the show ring.

There will also be a judging contest with a class of bulls, a class of heifers, and a class of young calves.

Any interested club member or parent is encouraged to attend.

### 4-H Horse Field Day Proved Outstanding Training Event

Dr. Sam McGough of Pendleton presented an outstanding horsemanship and showmanship training session at the 4-H horse field day Saturday, May 7, at the Wrangler arena. Club members in attendance received individual instruction and points on improvement. Leaders and parents who attended claimed it was a very worthwhile training event.

At the 4-H playday following the training session, the following club members placed high: Jr. Barrel—1st, Joan Healy—19; 2nd, Lisa Collins—20.4; 3rd, Jeanne Daly—20.6; 4th, Dovie Alderman—26.1.

Intermed. Barrel—1st, Bruce Bergstrom—21; 2nd, Albert Phillips—21.9; 3rd, Patti Healy—22.3; 4th, Leslie Bushman—22.4.

Sr. Barrel—1st, Sheila Luciani—19.1.

Jr. Ring Race—1st, Jeanne Daly—12; 2nd, Mike Bergstrom—16; 3rd, Lisa Collins—17.6; 4th, Patti Daly—20.

Intermed. Ring Race—1st, Bruce Bergstrom—13.9; 2nd, Marcia Jones—14.2; 3rd, Becky Doherty—15.1; 4th, Brette Howell—16.

Sr. Ring Race—Sheila Luciani—13.5.

Jr. Back-up Race—1st, Joan Healy—16.1; 2nd, Susan Healy—19.9; 3rd, Jill Scott—21.2; 4th, Sherri Kemp—22.1.

Intermed. Back-up Race—1st, Patti Healy—16.2; 2nd, Bruce Bergstrom—23.5; 3rd, Albert Phillips—39.9; 4th, Becky Doherty—43.6.

Jr. Pole Bending—1st, Joan Healy—27.1; 2nd, Dovie Alderman—27.2; 3rd, Abbie Wilson—29.6; 4th, Jeanne Daly—30.

Intermed. Pole Bending—1st, Marcia Jones—27.1; 2nd, Vivian Phillips—30; 3rd, Patti Healy—32.8; 4th, Albert Phillips—34.

## Jepsen Appointed To Advisors Board

Announcement was made this week of the appointment of Robert H. Jepsen of Heppner to the Associate Board of Advisors of Universal Acceptance Corporation, by Nathan N. Director, president.

The Oregon Finance Corporation commenced operations this January after approximately six months of planning and organization. U.A.C. is proposed to be a \$9,000,000 company, one of the largest of its kind in Oregon offering a service of inventory financing, factoring, appliance and furniture financing, according to Director.

## Rhea Grange to Host Speaker on Sweden

Members and guests of Rhea Creek Grange will have an opportunity to hear a guest speaker, Lars Johnson, at the May meetings on Friday evening, May 13.

Johnson, an exchange student from Sweden, now living in Hermiston, will speak of his native country during the grange program. The public is invited to come and hear him.

A potluck supper will be served at 6:30 p.m., with the program immediately following. A business meeting will be held after the program.

### Too Late To Classify

FOR RENT—Large two bedroom home, partly furnished, close in. Ph. 676-9498. 11-11c

## Republicans Bill Dinner in Condon

Governor Mark Hatfield will be the principal speaker at a dinner meeting of the Republican party in Condon on Friday, May 20, at 7 p.m. It will be in the Memorial Hall.

Ernie Fatland is chairman, and he extends an invitation to all interested. Tickets of the fund-raising dinner are \$5 for adults and \$2 for students.

## Well Drilling

ROY T. FRENCH  
Now drilling wells in your vicinity

## Rotary Drilling

Is much faster. Does away with testing. Cleans the hole with air as it drills.

### CALL ME

### Free Estimates

Cheerfully Given

276-2081 Collect  
1015 S. W. Frazer  
Pendleton, Ore.

# TEXMO

## POLE FRAME STRUCTURES

- Low Cost Farm and Commercial Buildings
- Ideal and Practical For Barns, Milk Parlors, Machine Sheds, Loafing Sheds, Hay Storage Sheds

FOR FREE ESTIMATES AND INQUIRIES WRITE OR PHONE

## HAROLD STINCHFIELD

BOX 266, CONDON, ORE.  
PHONE 384-5453

TEXMO FRANCHISED DEALER FOR  
GILLIAM, MORROW AND UMATILLA COUNTIES

### Houghton Grades to Tour County to Study Conservation

May continues to be the month for tours. In South Morrow county there will be the conservation tour scheduled for Friday, May 20. Details of the tour will be found in an item in this paper.

This week the writer is working with the Boardman Soil and Water Conservation District Supervisors in planning a fifth and sixth grade conservation tour this month for the A. C. Houghton Grade school.

### Spending the day with Mrs. Lois Winchester on Monday

was Mrs. Vera Noakes of Hermiston. Mrs. Noakes, recently a public critic of Mrs. Winchester's crusade for better treatment of animals, was here in response to correspondence the two ladies have been carrying on in recent weeks. The day long visit, reported Mrs. Winchester, led to a much better understanding of their differences of opinion.

## POWER CONTROL

### ELECTRIC MOTOR SERVICE

WE REPAIR:

- Electric Motors
- Power Tools
- Hydraulic Jacks
- Alemite Equipment

421 S. E. 4th Pendleton  
Phone 276-5862

# Ford Sports Hardtop Sale!



FORD GALAXIE 500 2-DOOR HARDTOP

## Extra features at an Extra-low price

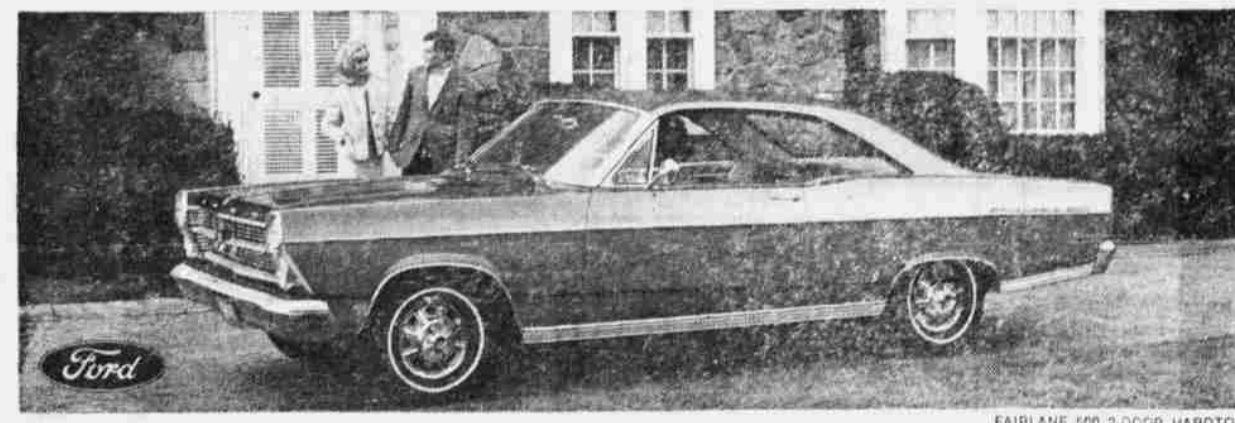
**Ford Galaxie 500 2-Door Hardtop** (above) is on special sale now at your Ford Dealer's. It has a 240-cu. in. Big Six engine • Fully synchronized 3-speed manual transmission • 7-item safety package, and more. Every special Ford Hardtop features: Whitewall tires • Styled steel wheel covers • Special hood ornament • Luxury trim.

**Specials on Cruise-O-Matics and Wagons!** Special sale price on Cruise-O-Matics and on Ford's big Ranch Wagon with Magic Doorgate • Whitewalls and many other extras.

**Fairlane 500 2-Door Hardtop** (below) also on sale includes a big 200-cu. in. Six engine • 3-speed manual transmission • 7-item safety package, and more. Every special Fairlane Hardtop features: Whitewall tires • Spinner-type wheel covers • Luxury trim • Pleated vinyl seats.

**Great Deals If You Act Now!** The number of specially equipped, specially priced hardtops is limited. So see your Ford Dealer right away.

**Be careful with your car-full... start with a safety check!**



FAIRLANE 500 2-DOOR HARDTOP

You're ahead in a FORD all the way!

# HEPPNER AUTO SALES, Inc.

Heppner, Oregon

# car 54000, we know where you are!

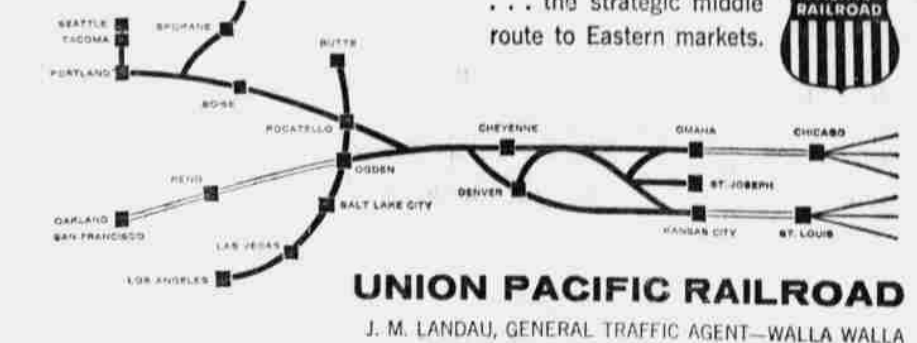


Keeping track of every car in a busy freight yard may seem like an impossible job! But, for Union Pacific, it's simple! Thanks to our Perpetual Inventory Car Location System, we know where every car is at all times while on the Union Pacific.

Each car has its own computer card which is processed electronically and placed in an assortment bin for pin-

pointing deliveries without delay. This not only helps us provide shippers with up-to-the-minute information on cars, but it also speeds up the turn around of equipment, thereby improving car utilization.

This is just another modern railroading technique used by Union Pacific to assure our customers the very finest service. Ship Union Pacific... the strategic middle route to Eastern markets.



**UNION PACIFIC RAILROAD**  
J. M. LANDAU, GENERAL TRAFFIC AGENT—WALLA WALLA