

Conservation District Sets '66 Objectives

Year's Goals Planned

OBJECTIVES FOR 1966

Encourage continuation of strip cropping, stubble mulch fallow, contour farming, residue utilization, field diversion ditches and all other conservation practices. Heavy storms and snow on frozen ground this year brought home to farmers that a complete conservation program is necessary to hold and conserve their soil and water.

Bring to attention of all people the importance of conservation of our natural resources and its effects on our economies.

Encourage and take leadership in all water conservation activities in the District. Encourage the use of all conservation and management practices for better water application.

Push for completion of a preliminary study on the Rhea Creek Small Watershed Project. Take leadership in all possible small watershed projects for flood control or more efficient use of water.

Continue to work for Resource Conservation and Recreation areas.

Support the organization of the Columbia Plateau Council. To develop a long range program for erosion control for the dry land farming area of the Columbia Plateau.

Continue cooperation with Oregon Wheat League in selecting a Conservation Man of the Year.

Continue to maintain and operate equipment now owned.

Affiliate with and be represented at the State and National Conservation Assn's. Continue membership in the Soil Conservation Society of America.

Continue to sponsor Conservation Speech contests, Soil judging contests, Soil Conservation Tours during Soil Stewardship week, continue 5th and 6th Grade School Tours, conduct educational tours in range, pasture and woodland management.

Carry out a well-rounded conservation program through participation in Goodyear Conservation award contest.

- DISTRICT EDUCATIONAL ACTIVITIES**
1. Held ten regular monthly meetings—two special meetings. Meeting held the first Tuesday of each month, except August.
 2. One annual meeting—held regular meeting date in February. Annual report circulation through local paper.
 3. Conservation Week—Educational meetings and tours.
 4. Observe Soil Stewardship Week—Challenges of Growth.
 5. Adult Conservation Tour — Lunch at Conservation Man of Year's Farm, Mr. and Mrs. David Baker.
 6. County school Fifth Grade Conservation Tour—Lunch furnished by Ione School.
 7. Co-sponsored applications for RC&D projects with neighboring conservation Districts as well as Small Watershed (PL 566) projects.
 8. Continued the push for a study made of Rhea Creek Small Watershed project (PL 566).
 9. School sixth grade Forestry-Soils Tour — Schools from four counties.
 10. Sponsored area soil judging for FFA chapters — Nine High Schools contesting.
 11. Sponsored the Soil and Water Conservation Speech Contest—Won fourth in state.
 12. Was host for the supervisors' area workshop.
 13. Attendance at OAS & WCD Annual Meeting.
 14. Co-sponsors of Farm-City Week and annual banquet.
 15. Recognition and award to Morrow County Conservation Man of Year.
 16. Own and rent equipment to district cooperators.
 17. 139 cooperators used district machinery and stakes.
 18. Represented at Columbia Plateau Resources Council.
 19. Contested in the Goodyear program.

ANNUAL REPORT February 1, 1966	
Bank balance January 5, 1965	\$1,745.81
Received from cooperators:	
Equipment rentals	\$481.91
Stake sales	309.72
Bank deposits during 1965	791.63
Total bank balance including 1965 deposits	\$2,537.44
Disbursements during 1965:	
Office supplies	\$ 36.60
Travel including bus tours	146.30
Annual meeting	15.00
Equipment maintenance	10.00
Equipment operating supplies	111.13
Stakes	123.15
Stewardship supplies	19.50
Refunds	15.75
Postage	52.75
Printing and advertising	62.03
Dues and memberships	151.00
Insurance and Fidelity bonds	49.00
Awards	92.85
Paid by checks	885.06
Bank balance January 4, 1966	\$1,652.38
Value of equipment	1,164.84
Total cash and equipment assets as of January 4, 1966	\$2,817.22
The following equipment is owned by the District:	
Noble blade	Gopher Getter
Terracer	Packer
Drill	

HEPPNER GAZETTE-TIMES, Thursday, January 27, 1966 —7



DAVID BAKER of Ione was chosen Morrow county's Conservation Man of the Year for 1965 and is pictured in trashy fallow on a field at his place. Baker was particularly cited for work he has done to prevent wind erosion in an area susceptible to this type of damage. (G-T Photo).

Columbia Plateau Program Aims At Saving Soil

By KEN TURNER

The Columbia river plateau in Oregon and Idaho is endowed with rich soil that is suitable for dryland grain production. The most productive of this good farmland is being ruined.

Because the soil losses are tremendous, and since this problem is accelerating, a special resource organization, specific for this area is being sought by conscientious farmers.

A Columbia plateau conservation program would embrace the present Conservation Serv ice and offer long range contracted practices. More detail and planning would be available to farmers also. Another important feature would be coordinating any farm program in effect with conservation needs.

It is of concern that subsidized grain production is produced on farmland that is being rapidly eroded. On the other hand, pure economics and the cost-price squeeze causes even more soil resource abuse as farmers are less able and willing to make needed changes.

In forestry, sustained cutting and perpetual logging is a good example of resource planning. The Northwest lumber industry will be prospering 100 and 200 years from now. Sloping or wind eroded farmland will not be, unless technology finds farming methods much different than we now have.

Until modern science can halt soil losses in the Columbia Plateau, effective land use changes should be made during this interim period.

During an era of productive abundance, it is illogical that the resource be destroyed. This irreplaceable asset will be sorely needed soon and then must be more wisely used.

Program OF THE TWENTY-SECOND ANNUAL MEETING

HEPPNER SOIL AND WATER CONSERVATION DISTRICT

Tuesday—February 1, 1966

7:30 P.M.—Lexington Grange Hall

- Slides of Conservation Practices in the Mid-West and neighboring Districts
- Business Meeting
- Minutes of 1965 annual meeting
- Progress report
- Financial report
- Machinery report
- District educational activities
- Nomination and election of two supervisors
- Introduction of Guests
- Columbia Plateau Resources Council
- Committeemen Paulen Kaseberg
SWCD Supervisor and Farmer,
Wasco, Oregon
- Refreshments—Compliments of
Lexington Implement Company
Central Market



DAVE BAKER, '65 Conservation Man, helped prevent wind erosion on his ranch with plantings of ponderosa pine. The trees have done remarkably well.

Accomplishments Told

ACCOMPLISHMENTS IN 1965

- Heppner District had 320 cooperators which includes 781,915.38 acres.
- 23 new cooperators signed district agreements covering 32,379.38 acres.
- 13 basic conservation plans were written on 14,530.50 acres.
- 4,960 acres soil surveyed this year bring the total surveyed to 905,251 acres.
- 847.4 acres of contour strip cropping now totalling 13,593.4 acres.
- 290 acres of field strip cropping now totalling 4224 acres in the District.
- 510 acres of wind strip cropping now totalling 4952 acres in the District.
- 285,460 Linear feet of diversions established making a total of 156.2 miles.
- 120 acres of land leveling bring total to 4598 acres leveled to date.
- 37 acres of land smoothing completed this year.
- A total of 22,769.4 acres strip cropped in the district.
- Four new cooperators stubble mulched for the first time for 1779 acres this year.
- Approximately one-half of all our cropland is under stubble mulch type of summer fallow.
- Checked 4829 acres of subsiding on ten farms.
- 1213 acres grass and alfalfa seedings for pasture, hay or range.
- Ten stock ponds, one farm pond, 15 erosion control dams and one spring developed.
- 5450 linear feet of irrigation ditches and 13,463 feet of channel changed and enlarged.
- Five large irrigation structures built.
- 38 acres of grassed waterways and 3725 linear feet of dikes and levees.
- About one-fourth of all range land is under a deferred system of grazing.
- 687 linear feet of tile drainage installed this year.

High School Shop Class Overhauls Machines

By RAYMOND FRENCH

During the winter of 1964 the Heppner SWCD was fortunate in having Gerald Jonasson's high school shop class overhaul our culti-packers. Although we were unable to obtain new parts, the boys did a remarkably good job rebuilding the packers. In order to get a maximum stand it is necessary to pack the seed bed both before and after seeding.

The district's gopher machine is also available for use. Weather conditions permitting, winter or early spring is the ideal time to bait gophers. To get good results, the gopher machine should be used at least ten days

before any cultivation operations are planned, as any tillage tends to stray the artificial burrows made by the gopher-getter.

The grass drill with depth gauges does a good job around the county seeding grass and legume mixtures.

Although the district has no direct economic relationship with Dick Meador or Gordon White, earth moving contractors, we are very pleased their services are available. Construction of diversion ditches, terraces, waterways, ponds, detention dams, filling and shaping, and land leveling are the major structural practices.

LETTERS

Dear Barney,

My father and me are farmers of much experience. We have wore out farms in three states. Both of us are hard workers. Not like the naybers, runnin around to meetins all the time. They say they are larnin new methods, but this ain't so. We no the old ways are best.

Now, our problem is this. The old farm ain't lookin so good any more. Corn is dyin and ain't been abul to git across the gully in the back field for two years. This farm is just plane wore out but we ain't got ny muneey to buy a new one. What shall we do?

Sod Buster

Dear Buster,

If the grass looks greener in the other fellow's field, and the trees are tall and sappy and the corn a better yield, it may be that waterway or open drainage ditch can be the answer to your woe, and we can tell you which! With such a simple measure, in a year or maybe two I'll bet that all your neighbors will start to envy you. So come on in or give us a call, we'd like to help you survive. The office is 529 1/2 Broadway in Greenville, phone 548-1715.

Barney

(Lifted from the Darke SWCD newsletter)

Don't Let Your Land Go Down the Drain!

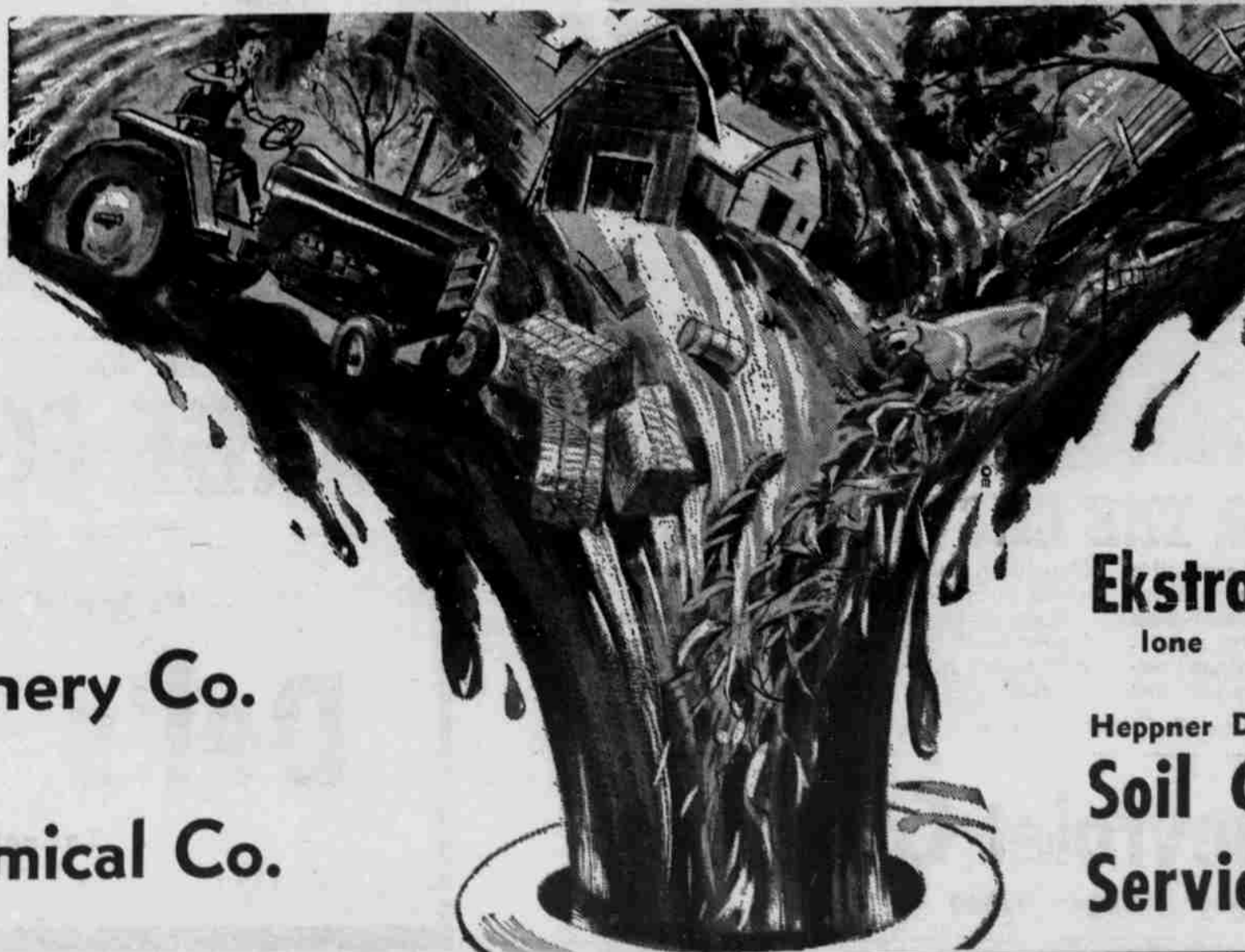
THIS CONSERVATION PAGE SPONSORED BY THE FOLLOWING—ALL KEENLY INTERESTED IN CONSERVATION:

Gordon White
Grader Service, Ione

Dick Meador
Land Leveling

Padberg Machinery Co.
Lexington

Bi-County Chemical Co.
Ione



WE URGE YOUR SUPPORT OF GOOD CONSERVATION PRACTICES TO PRESERVE OUR RESOURCES.

INLAND Chemical Co.

Ekstrom Farm Chemicals
Ione

Heppner District
Soil Conservation Service