

**Leather Work Viewed By Touring 4-H Club**

Bee's Busy Buddies 4-H club of Cecil met March 23 on a field trip to Pendleton at the home of C. H. Hynd. Mrs. Ewing Hynd announced the next meeting will be April 27 at the annual parent achievement night dinner. Election of next year's officers will be held also at that time.

We began our field trip by visiting Hamley's Saddle-tree factory. We were interviewed on KUMA radio's coffee hour at the Tapadera restaurant and afterwards toured the KUMA radio station.

After lunch the club visited Hamley's leather shops to observe the making of men's dress belts and saddles. We also went to the Severe Bros. leather shops to observe saddlemaking.

To conclude the field trip, we went on a tour of the Pendleton Woolen Mills.

Gary Thomas, reporter

Boxboard for making signs and decorations at the Gazette-Times

**FARM NEWS**

**County Agent's Office**

**Plans Shaping For Second Annual 8th Grade Tour**

By N. C. ANDERSON

As plans progress for the second annual Portland Eighth Grade Tour it is quite pleasing to note the interest that potential host families have in this public relations event.

Perhaps the most pleasing of all, especially at this time when the daily papers are full of racial problems throughout the country, is the acceptance of most all host families in accommodating colored children which might be on the tour. In almost every case applications received to date have indicated that host families would be happy to accommodate colored children.

Some of the remarks found on the application are such as: "It doesn't make any difference to their color." "It doesn't matter to me whether they are colored or white," etc. In the meantime, plans shape up for a successful tour as contacts are made for various parts of the program.

Chairman Lindsay Kincaid, lone, is planning a meeting of the committee to be held within the next few days to firm up plans. Word comes from Ed Shannon, urban 4-H extension agent, Portland, that names of the Portland eighth graders will be sent soon in order that all of our host families can find out how many and who will be staying with them during the May 7, 8 and 9 tour.

Ranchers Do Grass Seeding As An Erosion Preventative As each day passes we receive office calls for recommendations for seeding grass pastures and

sod water ways. Most of these inquiries come as a result of the erosion damage from run-off caused by the December and January storms. While damage was great it is pleasing to note that many are making plans to "head-off" more of this in the future.

On Friday of last week, recommendations were given to Garland Swanson, Bob Peterson and Verner Troedson, lone, for seeding sod waterways, while Herb Peterson is planning a 27-acre seeding of grass pasture. Early last week Luke Bibby seeded 40 acres of foothill forest land that burned over last fall.

This airplane seeding made in fresh snow on ashes should provide a lot of additional feed as it becomes established. Other conservation practices are being established each day as a result of the storms.

**Sprinkler Irrigation Best**

Sprinkler irrigation is more efficient than flood irrigation, Nebraska research shows. Nebraska engineers report sprinklers eliminate the 30% distribution loss which is expected with gravity irrigation. They point out modern, power transported sprinkler lines also eliminate the high labor requirements involved with old style hand moved systems.

**Discussion Set on Forest Game and Stock Management**

Word has been received from Forest Service officials of a meeting to discuss big game-livestock management. The meeting to be held on Friday evening, April 9, in the Little Vert Auditorium, Pendleton, will start at 7:30 p.m.

Discussed will be problems of managing big game and domestic livestock in the same areas. This would include lands under National Forest administration as well as private adjacent lands.

The meeting will be open with representation encouraged from cattlemen, private land owners, specialists, game officials, National Forest administrators and other interested groups.

**Wool Prices Drop**

As wool pools throughout the country contract for the 1965 clip, we find that wool prices are lower than a year ago. The Parma, Idaho, pool sold recently at 57.89 cents per pound grease bases. A year ago the same pool sold for 63.77 cents. The Bear Lake pool sold 18,000 fleeces at 59.17 cents. The Ellensburg, Wn. pool sold 40,000 pounds of 3/4 and 1/4 blood at 57.8 cents for June 15 delivery.

**Horned Cattle Cause Heavy Losses in Markets**

A news article from a Canadian livestock paper is inter-

**Psychologist Due**

Mrs. Verna B. Hogg, state school psychologist from the State Department of Education at Salem, will be present in Morrow county during the month of April at the request of the Morrow County Health Department. She will be present in Heppner April 6 and 7 at the Heppner Grade school, and in Irigoin at the A. C. Houghton Elementary school on April 8.

esting, I quote, "Horned cattle cost Manitoba livestock men over \$55,000 last year in penalties alone. The figure represents a \$2.00 penalty on over 27,000 horned cattle over 400 pounds. The proceeds go into a Manitoba Horned Cattle Trust Fund and are used to finance programs for cattle improvement.

Besides this direct loss to the individual, horned cattle are responsible for an even greater loss to the industry, says Provincial beef cattle field man, W. T. Henderson. They are responsible for considerable bruising of other cattle, resulting in extra carcass trimming.

**Early Spring Turnouts Bring Feeding Problems**

Spring is rolling around pretty fast in the range areas of Oregon. Presumably, if the size of the hay pile is a reliable guide, spring is already here in many areas.

The problem of early spring turnout is with us each year about this time. Ranchers are anxious to get the stock out of concentration areas to help overcome the disease problems. Cows will soon get a taste of green grass some place and will be reluctant to eat hay and other dry material. These factors point out a problem, but do little as far as giving us any answers.

Early spring feed for range livestock continues to be a problem. Since range management is tied so closely to managing the forage resource, we need to take a good look at our forage resources to see what is available.

Native range that has been deferred in 1964 and has an adequate amount of carry-over material can serve as a satisfactory early spring range. The old, dry material will be utilized quite well by the livestock and at the same time they may get a little green-picking from some of the early growing grasses and forbs. If native range is used this way, livestock should be removed about the first of May or when the bluebunch wheatgrass is putting up about 3 or 4 inches of growth. This will allow the native bunchgrass to continue to

**Monument News**

By MARTHA MATTESON

MONUMENT—Maynard Hamilton has returned to his home after spending two weeks at the Frank Williams home and a week at the Wayne Leathers home since his release from the Heppner hospital on March 7.

Mr. and Mrs. Henry Martin of Prineville were week-end visitors with relatives and friends here.

Vera Gardner was a business caller in Long Creek on Saturday.

Mr. and Mrs. Jim Croker and son Ronny left early Friday morning for a trip to Seattle, Wn. They returned home late Sunday night.

Mrs. Jerry Hudson and children visited a few days during vacation with relatives in Portland.

Mrs. Harold Reynolds and daughter Sandra, Mr. and Mrs. M. Stubblefield, Mr. and Mrs. George Stubblefield, Jim and Robert, drove to Fox Saturday and spent the day at the Leonard Osborne home.

Mr. and Mrs. Melvin Round and two sons of Idaho were here for the week-end, visiting his

**Beverages Studied By 4-H Cooking Club**

At the last meeting of Kettles and Spoons 4-H cooking club, we discussed our choice for Father of the Year. The Mothers Tea is planned for April 1.

Mrs. Bob Abrams showed the members how to make milk shakes. Roll call was answered by naming a drink and telling how to make it.

Linda Cooper, reporter

flocks. Mr. and Mrs. Ed Round, during spring vacation.

Starting Sunday, April 4, the Monument church will start having services each Sunday evening at 8 p.m.

Maynard Hamilton was a Sunday dinner guest at the Elmer Matteson home.

Monument residents awakened Friday morning to find 11 inches of snow on the level ground.

Mr. and Mrs. Marvin Howell and two sons of Spray were Sunday visitors with his folks, Mr. and Mrs. Frank Howell.

Among those going to John Day during the past week on business were Mrs. Page Dulaney, Mrs. Bud Johnson, Mrs. Wayne Leathers, Jim Croker, Mrs. Verne McCarty and Mrs. Elmer Matteson.

Tell the advertiser you saw it in the Gazette-Times.

**MUNICIPAL COURT**

March 29—Verlin Matthews, drunk and disturbing the peace not in a public place. Fined \$25.

Payroll deduction slips are on sale at the Gazette-Times.

**CLIPPING And SHEARING BLADES SHARPENED FREE**

As A Service To Our Many Friends and Customers

Compliments of **HUMPHREYS** REXALL DRUGS AND **ERWIN'S SEED** CLEANING

**WHEAT GROWERS!**  
NOW CLEARED FOR USE, FOR SELECTIVE WEED CONTROL IN WHEAT.



**Banvel-D**  
For the Control of Hard to Kill Broadleaf Annual Weeds.  
GET BANVEL-D NOW!  
Inland Chemical Service  
Ph. 676-9103 Heppner

**Wheat Growers!**  
Control Cockle, Sowthistle, Dog Fennel, Fiddle-neck, Buckwheat, Gromwell, Knotweed, Tarweed, Knawel, and other hard-to-kill broadleaf annual weeds with:



with **Banvel D** HERBICIDE

For selective, broad spectrum weed control in wheat, use: Banvel-D Plus 2,4-D L. V. Ester Tank Mix Combinations.  
• Higher Grain Yields • Low Cost, Effective Control  
• Faster, Easier Harvesting.

**VELSICOL CHEMICAL CORPORATION**  
341 East Ohio Street, Chicago, Illinois 60611

**For Weed Spraying**  
CALL ON **MEL BOYER**  
Owner—Gar Aviation

Spraying—Dusting—Fertilizing—Seeding

DRY OR LIQUID FERTILIZER APPLICATION. STANDARD OR HIGH DENSITY SPRAY APPLICATION.

A GOOD JOB AT A FAIR PRICE  
You Can Find Us All Year Around  
AT THE **LEXINGTON AIRPORT**  
Phone 989-8422



**COLE ELECTRIC**  
Motor Rewinding  
INDUSTRIAL-COMMERCIAL FARM AND HOME  
S. W. 23rd Pendleton

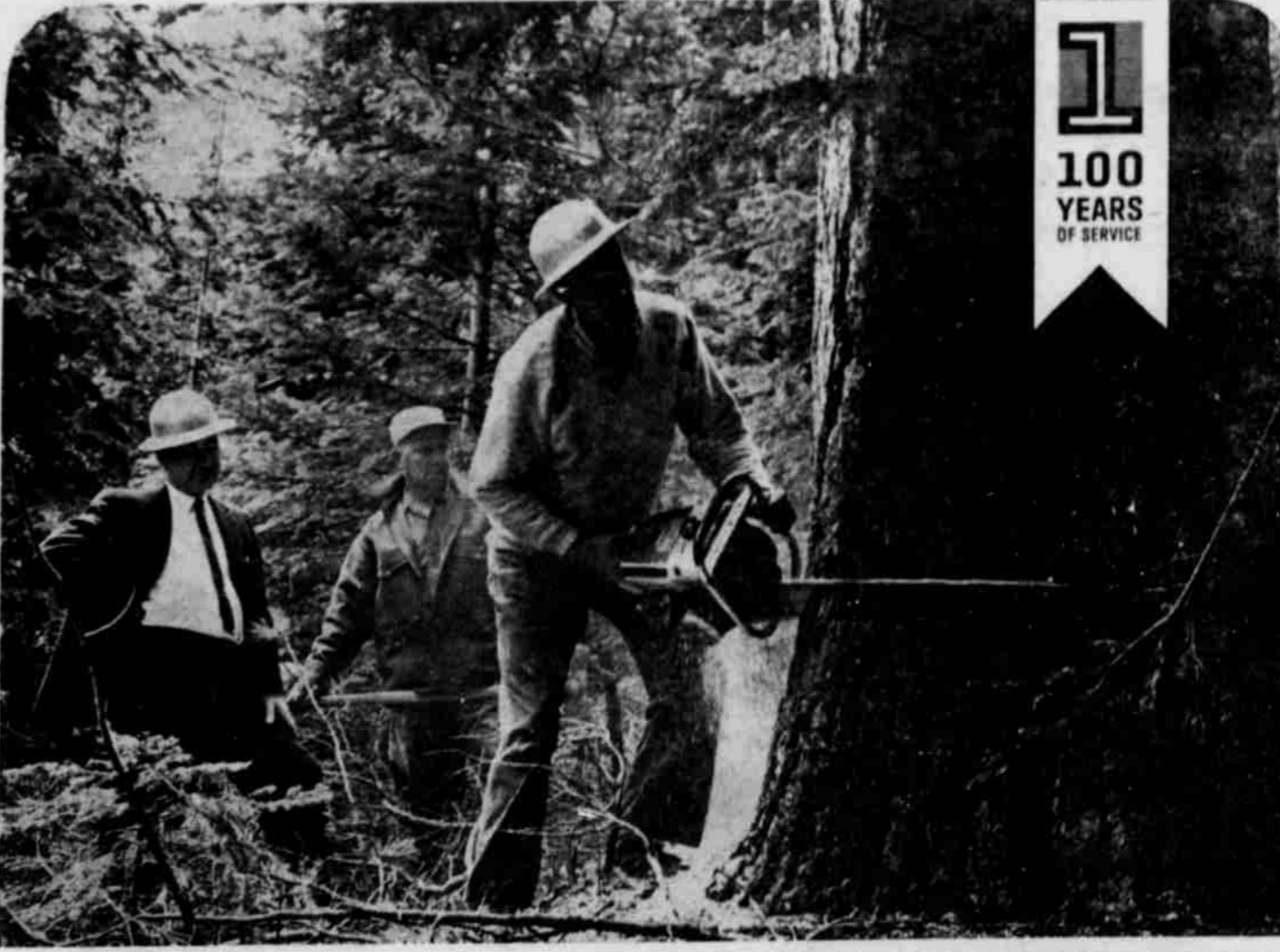
**GET FAST DELIVERY ON OUR NEW MUSTANG "SIX SHOOTER"!**



1965 MUSTANG HARDTOP


Have you tried Mustang's lively new 200-cubic-inch 6-cylinder engine? Try it! Right—you never expected such high performance at such a low price!

**Come in! Test-drive a Mustang at your Ford Dealer's today!**  
**HEPPNER AUTO SALES, Inc.**  
HEPPNER, OREGON




**FIRST NATIONAL BANK IS PEOPLE**  
....Serving the Banking Needs of Other Oregon People

Extensive forests of pine and white fir surround the Bend area, and contribute to its prosperity. Here First National's Bend branch manager has donned safety headgear to watch the harvesting of a 300-400-year-old Ponderosa pine, diameter approximately 40 inches at the cut. Pine is logged selectively, the individual trees being selected for maturity, vigor, density of stand, and to permit light to reach the understory, or oncoming crop of new growth. It takes a faller about five minutes to drop such a tree with a chain saw. This tree will probably contain more than enough lumber to build an average house.



Heppner Branch Manager John Venard and his staff have a total of 100 years experience in banking. They know people and conditions in the Heppner area. Consult these hometown people for every banking need.



**FIRST NATIONAL BANK OF OREGON**  
Member Federal Deposit Insurance Corporation