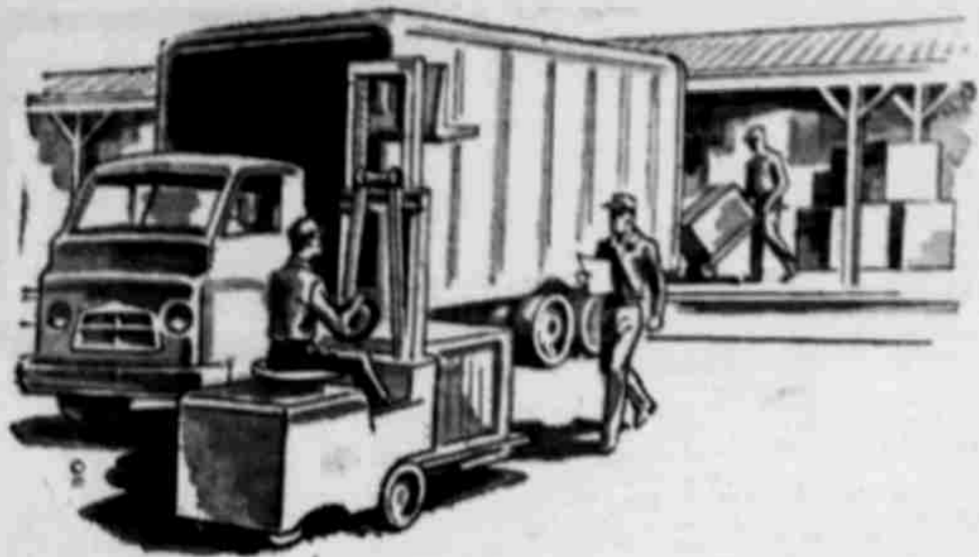


# Good Things Happen

## To Your Town (And You) When You SHOP AT HOME



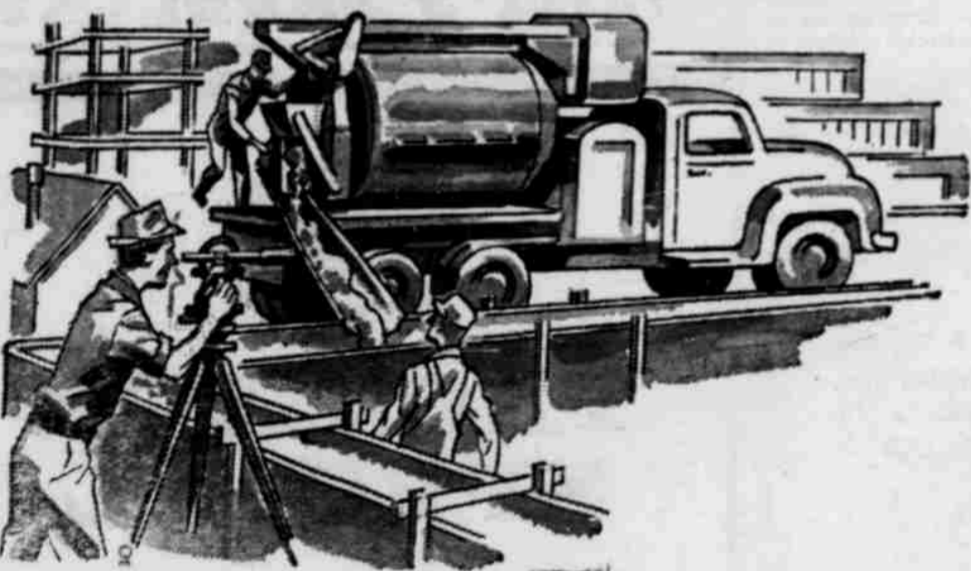
### Trade Picks Up

... when you shop at home! The movement of fresh new merchandise into town accelerates. Stores can stock ever-wider varieties ... can create new employment opportunities for local people.



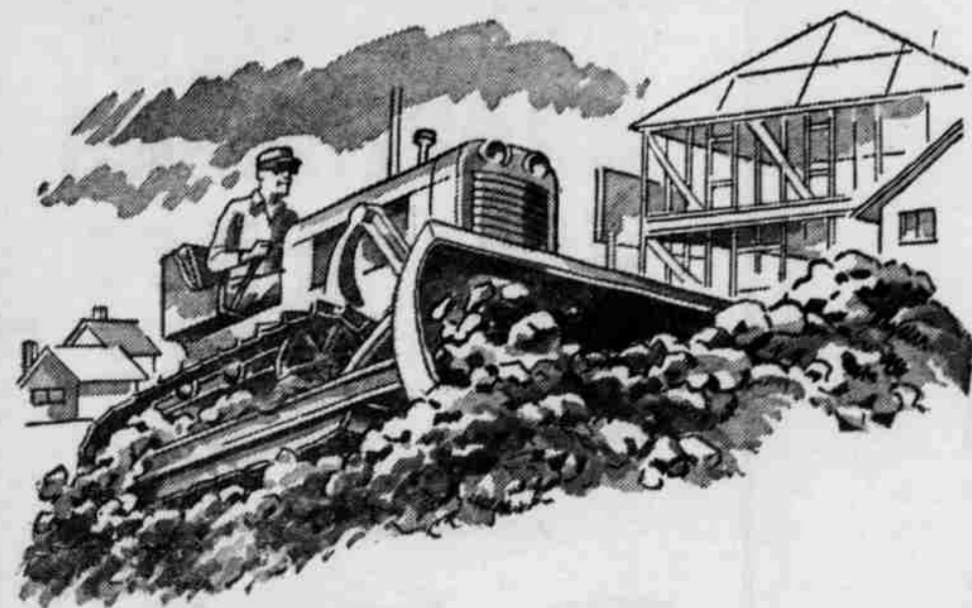
### Stores Can Expand

... and improve their facilities for your convenience when they have your shopping support. This creates work for local people, too!



### Construction

... of commercial and industrial buildings is stimulated as new business is attracted to our town by its superior community facilities, all of which you help support when you shop at home!



### New Homes Go Up

... to accommodate families who want to live in an on-the-go, on-the-grow town. The resulting improvement of vacant land increases assessment valuations, and thus tends to keep your taxes down.

You haven't seen the last of the money you spend at home. It keeps on working for your community ... and you! Immediately it becomes available for sustaining local trade and commerce. Every dollar spent here adds two or three dollars to local trade volume as it passes from hand to hand. When you shop at home you help local business people pay the taxes and make the contributions that support your schools, civic services, churches, hospitals.

... And As An EXTRA Dividend  
ENJOY THESE SHOPPING ADVANTAGES



You Name It: These HEPPNER Firms Have It!

- |   |                                      |
|---|--------------------------------------|
| Anderson's Builder's Supply               | Humphreys Rexall Drug                |
| Ayers Pest Control                        | Inland Chemical Co.                  |
| Clayton Ayers — All Types of Pest Control | Kinzua Corporation, Heppner          |
| Bank of Eastern Oregon                    | Lairds' Variety Store                |
| Jerry's Barber Shop                       | Lott's Electric                      |
| Jeanne's Beauty Shop                      | M&R Company                          |
| Case Furniture Co.                        | Floor Covering and Heating           |
| Central Market                            | MiLadies Apparel                     |
| Columbia Basin Electric Co-op             | Morrow County Abstract and Title Co. |
| L. E. Dick                                | Morrow County Creamery               |
| Economy Market                            | Northwestern Motel                   |
| Elma's Apparel                            | Peterson's Jewelers                  |
| Farley Motor Co.                          | Pettyjohn's Farm and Builders Supply |
| First National Bank of Oregon             | Phil's Pharmacy                      |
| Ford's Tire Service                       | C. A. Ruggles Insurance Agency       |
| Fulleton Chevrolet Co.                    | Thomson's Grocery                    |
| The Gazette-Times                         | "Your Friendly Store"                |
| Gilliam and Bisbee                        | Tum-A-Lum Lumber Co.                 |
| Gonty's                                   | Turner, Van Marter and Bryant        |
| Appliances and Shoes                      | Van Winkle's Motel                   |
| Heppner Auto Parts                        | and Service Station                  |
| Heppner Auto Sales                        | Wagon Wheel Cafe                     |
| Heppner Lumber Co.                        | Western Auto Store                   |
| Hotel Grill                               | Wilson's Men's Wear                  |