

County Agent's Office

Early Harvest Shows Fine Quality

By N. C. ANDERSON
Everyone delivering barley and wheat to the North Lexington elevator late last week when I visited there, seemed real happy with yields and quality of grain that has been harvested at this time.

What surprised me most was the quality of the grain. Some of the best looking Burt and Gaines wheat I have seen was being delivered to the elevator with test weights of 62 and 63 pounds.

I saw wheat being delivered from the Stanley Kemp, Roy Martin, Bill Doherty and Bert Grieb ranches that was exceptional. Larry Lindsay was delivering 53 pound Hudson barley and admitted that this was the heaviest barley that he had ever threshed.

While no one wanted to quote yields until they got further into harvest, it appeared that the wheat was yielding over 30 bushels an acre with barley "pushing" a ton per acre. If this type of yield holds out for the rest of the county, we will end up with an average yield in spite of the drought.

County Crops Compare Well
Traveling to Pullman, Wn., last Saturday, crops looked good through the whole area, but not as exceptional as in some years. It appeared that Morrow county's potential yield would be quite comparative to most of this country.

Souvenir Booklets Are Well Received by Tour Members
The souvenir booklets mailed to Portland eighth graders who visited Morrow county in late April have brought many responses from these boys and girls. The souvenir booklet was composed of pictures taken on the tour which told the story of agriculture in Morrow county. Mike Erwin, who stayed at the Gene Hall ranch, wrote a long letter and told us that the pictures "brought back memories of a wonderful trip."

Susan Crogan, who stayed at the Willard French ranch, said that she "would keep my booklet for many years as a memory of the trip." Patric McGill, who stayed at the Bob Kilkenny ranch, said "I enjoy the booklet very much and I appreciate having it to remind me of the tour."

For those who have not yet seen the souvenir booklet, we have copies at the office. While we believe we have mailed them to all who contributed toward the eighth grade tour, we would be glad to hear from anyone who would like to have a copy.

Beef Improvement Projects Pay Off for Breeders
This past week has taken many hours in beef improvement projects. Each year as I grade and weigh cattle for those breeders who are participating in the Performance Registry International Program of beef improvement, it is good to see the increased quality.

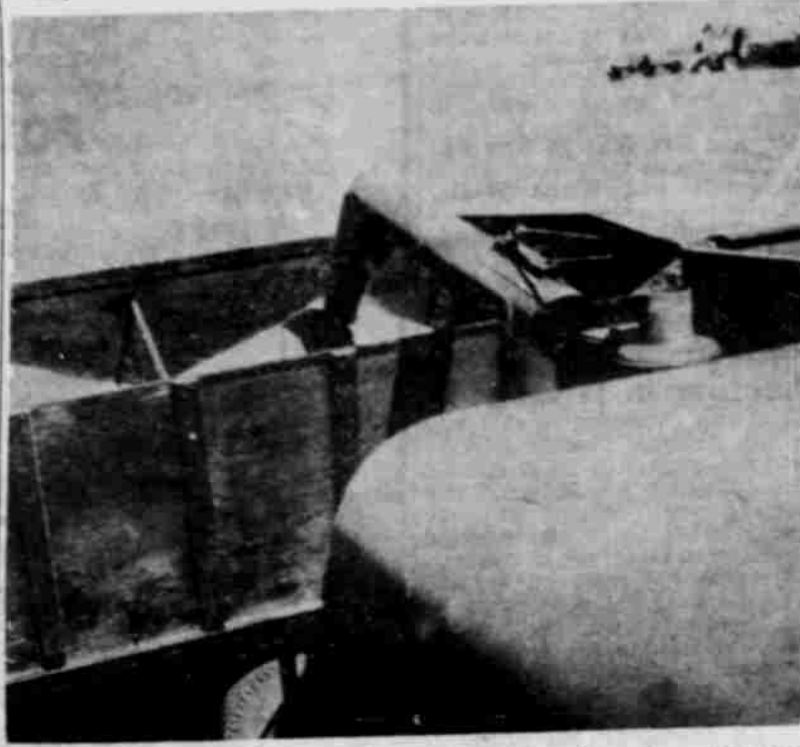
At the Frank Anderson ranch where 83 late 1963 and 64 calves were graded, 50 were graded 2-plus; eight 1-minus, and the rest 2. One minus grades are exceptional, and 2-plus, for a majority of the calf crop, is excellent.

At the Herb Ekstrom ranch where approximately 30 calves were weighed, excellent gains are being made and many of these heifers are graded one-plus. The Ekstroms are constantly striving for high quality and have been recognized throughout the entire country for the quality registered Herefords that they are raising.

In addition to the PRI program, Frank Anderson was selecting heifers and steers to go to the "Beef Industry" Hereford Association Performance program for herd sire feedlot carcass evaluation.



KENNETH NELSON, working for his brother, D. O. Nelson, gets ready to do maintenance work on combines after concluding a day of harvest Saturday.



WHEAT POURS into a truck at the D. O. Nelson place from Nelson's big new combine. Three combines do the harvest job in the Gaines wheat on the ranch.

uation. This program which involves the Hereford breeder, feedlot operator, the packer, and the American Hereford Association is aimed at providing "end product" records. Frank is testing two of his herd sires this year in the program which will provide off-feed test weights, conformation score, average daily gain on test, weight per day of age and various carcass information.

Not to neglect the commercial breeder, who benefits from these type of programs in the herd sires available to him, a visit at the Lloyd Howton ranch to look at his 1963 calf crop on feed was real stimulating. The Howtons have a high quality herd of Hereford cows and are using an Angus bull in cross-breeding. Because their calves average 619 lbs. at 6 to 6 1/2 months of age last fall, they could not get the kind of price for these heavy weaner calves that they felt was justified, they decided to put them in the feedlot. Now at approximately 15 months of age both heifers and steers are ready for market. While no gain records are available yet until marketed, they have made a tremendous average daily gain and have finished out to choice in the approximate 100 days they have been on grain. In estimating weights, we know there were many of these steers that were over 1100 pounds. Quality was excellent.

Good Results are Shown in Use of Banvel D Spray
Harold Wright, Ruggs, reports excellent results from the use of Banvel D for Canada Thistle control. Harold let his Canada Thistles get beyond the stage of best control with Amitrol T and thought he would try Banvel D last summer. After chopping down his thistles that were going to seed he sprayed the

stubble with 1 gallon of 4 lb. Banvel D per acre. He reports 100% control in areas where application was made. He is using more this summer to clean up newly found areas and patches that were missed a year ago.

New Veterinary Clinic Has Up-to-date Facilities
I had an opportunity last week to visit the new Veterinary Clinic just built by Dr. Jim Norene on Highway 207 in the south part of Heppner. I watched the Clinic being built during the last several weeks and was anxious to see the inside.

Mrs. Norene gave Dick Wilkinson and I a tour of the facilities one morning last week. Everyone interested should pay a visit to this clinic and see the facilities that it includes. Complete with reception room, office, operating room for both small and large animals, holding cages and kennels, everything is modern and spic and span. Dr. Norene should be congratulated for adding a facility such as this to our community.

Advertisement for TYLAN 200 antibiotic for beef cattle, featuring a picture of a cow and the Humpreys Rexall Drug logo.

Advertisement for Follett Meat Co. offering wholesale meats and custom slaughtering services.

Advertisement for SEED CLEANING services, highlighting a new cleaner and treater at the plant.

CLERK'S ANNUAL REPORT
JULY 1, 1963 TO JUNE 30, 1964

Table detailing the Clerk's Annual Report for the period July 1, 1963 to June 30, 1964. It lists various departments and their respective expenditures, such as County Court, Sheriff's office, and various public works.

Table titled 'OUTSTANDING WARRANTS FOR THE GENERAL FUND' showing warrants outstanding and issued for the period.

Table titled 'OUTSTANDING WARRANTS FOR THE GENERAL ROAD FUND' showing warrants outstanding and issued.

Table titled 'OUTSTANDING WARRANTS FOR WEED CONTROL FUND' showing warrants outstanding and issued.

Table titled 'OUTSTANDING WARRANTS FOR LAW LIBRARY FUND' showing warrants outstanding and issued.

Table titled 'OUTSTANDING WARRANTS FOR HOSPITAL MAINTENANCE FUND' showing warrants outstanding and issued.

Table titled 'SUMMARY OF PREVIOUS YEAR ENDING JUNE 30, 1963' providing a financial overview of the previous year.

Table titled 'STATEMENTS OF CANDIDATES FILED WITH THE COUNTY CLERK FOR THE PRIMARY ELECTION May 15, 1964—ORS 260.120' listing candidates and their financial statements.

SHERIFF'S AND TAX COLLECTOR'S ANNUAL REPORT
JULY 1, 1963 TO JUNE 30, 1964

Table detailing the Sheriff's and Tax Collector's Annual Report for the period July 1, 1963 to June 30, 1964, including tax collections and other financial data.

Table titled 'TREASURER'S ANNUAL REPORT JULY 1, 1963 TO JUNE 30, 1964' showing receipts and disbursements for the Treasurer's office.

TREASURER'S ANNUAL REPORT
JULY 1, 1963 TO JUNE 30, 1964

Table detailing the Treasurer's Annual Report for the period July 1, 1963 to June 30, 1964, including receipts and disbursements for various funds.

Table titled 'DISBURSEMENTS' showing a detailed breakdown of expenditures for various departments and funds.