

FARM NEWS

County Agent's Office

Cattle Production Costs Now Found Increasing

By N. C. ANDERSON

On a cow-calf operation, the percentage of calves weaned and their weaning weights are the two most important factors in determining whether a rancher can pay his bills. An 85% calf crop weaned, and an average weaning weight of 400 pounds, means that the cows in a 100 head herd are producing 340 pounds of calf per cow. At an average selling price of 27 cents per pound of calf, each cow is thus giving a gross return of \$91.80. But how much of this is the rancher able to keep?

A cost summary of 12 Colorado mountain cattle ranchers last year indicates the average production cost was \$100.22 per cow. This was for the year 1962 and production costs were certainly no cheaper in 1963 even though feeder calves were down in price. Compare the production costs of \$100.22 per cow with the \$91.80 gross return as indicated in the preceding paragraph. This shows the rancher to be going in the hole \$8.42 per cow in his herd. How are you doing??

The breakdown of figures show the following average production costs per cow during 1962:

Machinery and repairs, \$1.24; fuel and oil, \$1.74; utilities, .83; labor, \$6.00; auto, .60; pickup and truck, \$1.01; building repairs, .69; livestock expense, \$7.61; feed purchased, \$15.21; home raised feed fed, \$47.64; miscellaneous, .85; rent, .34; taxes, \$3.39; interest, \$7.88; insurance, \$1.05; machinery depreciation, \$2.11; building depreciation, \$2.03. Total, \$100.22.

What can you do? Increase calf crop through the use of enough fertile, active, well-conditioned bulls with a history of rapid and economical gains. Make sure the cows have had adequate and proper feed so they will come into estrus soon after calving. Weed out the shy breeders. Pregnancy test cows in the fall of the year. With feed costs as high as they are, few, if any, ranchers can afford to keep a non-pregnant cow. Select replacement heifers from good milking cows. Try to shorten the calving season to 50-70 days if possible. Get away from the late calves, the stragglers. Adjust the breeding season so the calves will be large enough to take all of the milk when the first flush of green appears. Attention to the many small details is what spells the difference between profit and loss in many instances.

LIVESTOCK LOSSES

amount to over \$2 Billion annually. (according to USDA estimates)



USE OUR LIVESTOCK SUPPLY DEPARTMENT

It is designed to serve you in your Livestock Disease Prevention Program

WE FEATURE

FRANKLIN VACCINES and SUPPLIES

HUMPHREYS REXALL DRUG

Registered Cattle Changes Shown

It is interesting to look back now and then to see what has happened to registered cattle numbers. During the past 20 years there have been the following changes in the numbers of beef animals registered among the three major beef breeders in the United States.

Herefords—1943, 276,000; 1963, 520,000; Angus—1943, 52,000; 1963, 345,000; Shorthorns—1943, 53,000; 1963, 38,000.

How much does a machine shed save? For tractors, year-around housing increases useful life by almost a year and reduces repair cost 19 per cent. This was brought to light in a study of 600 tractors by a State University.

In a similar study with 100 combines, useful life was increased by 1½ years, along with a 6 per cent reduction in repairs. Hot sun and high temperatures

County Extension Units Install New Officers At Festival

Mrs. L. D. Vinson, Kimberly, District VII Director of the Oregon Home Economics Extension Council, installed the newly elected officers and county committee women of the Morrow County Extension units at the annual Homemakers Festival in Ione on May 13, according to Esther Kirmis, Morrow county extension agent.

Installed for the 1964-65 year were:

Rhea Creek Unit—Mrs. Ron Haguewood, Heppner, chairman; Mrs. Ernest Christopherson, Ione, vice chairman; Mrs. Deanne Graves, Heppner, secretary; Mrs. Iva Booker, Heppner, treasurer, and Mrs. Albert Wright, Heppner, county committee.

Pine City Unit—Mrs. Douglas Drake, Heppner, chairman; Mrs. Burl Wattenburger, Echo, vice chairman; Mrs. Willard French, Echo, secretary-treasurer, and Mrs. Carl Rhea, Echo, county committee.

Irrigon Unit—Mrs. Donald Acock, Irrigon, chairman; Mrs. Max Jones, Irrigon, vice chairman; Mrs. Sylvia Morgan, Irrigon, secretary; Mrs. Andrew Skiles, Irrigon, treasurer, and Mrs. Paul Slaughter, Irrigon, county committee.

Heppner Unit—Mrs. R. G. Watkins, Heppner, chairman; Mrs. Bud Peck, Heppner, vice chairman; Mrs. Paul Warren, Heppner, secretary-treasurer; Mrs. Joe Wright, Heppner, county committee.

Boardman Unit—Mrs. William Seehafer, Boardman, chairman; Mrs. Earl Briggs, Boardman, vice chairman; Mrs. Arnold Hoffman, Boardman, secretary-treasurer, and Mrs. Walter Hayes, Boardman, county committee.

Ione Unit—(Held over until new officers are elected)—Mrs. Kenneth Palmer, Lexington,

"Daddy, you forgot..."



every litter bit hurts!"

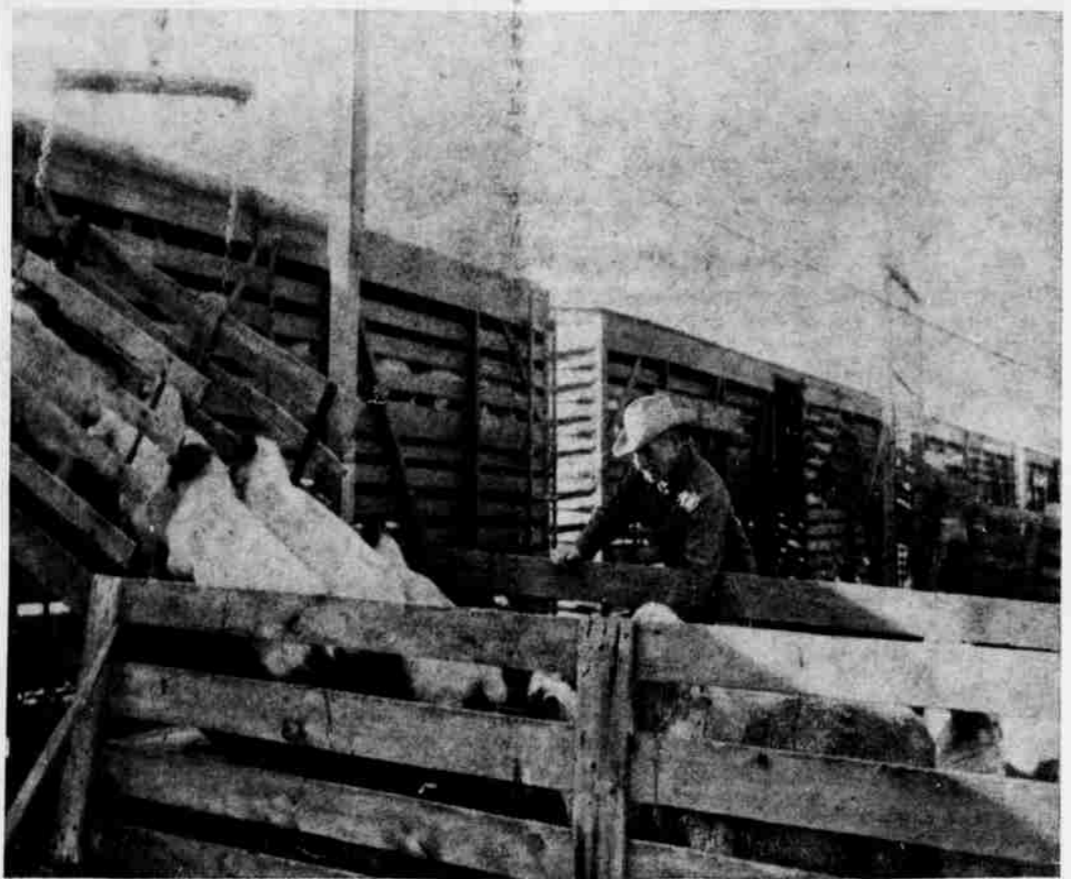
Susan Spotless says:

KEEP AMERICA BEAUTIFUL



Saddle Club Plans For Overnight Ride

The Pine City Saddle club held a regular meeting on Tuesday, May 12, at the Pine City schoolhouse. Patty Luciani gave a demonstration on splinting her brother's horse's broken leg. We also went up to see the horse. We made plans for the 4-H overnight ride on June 6 and 7. At our April 14 meeting our leader, Charley Daly, showed some interesting slides. Gary Frederickson, reporter



LOADING SHEEP in Union Pacific livestock car for fast rail trip to summer range in Montana is Henry R. Krebs, member of Krebs Bros. sheep operation at Cecil. Krebs shipped 9155 sheep in 35 cars. Annual trek has been made ever since 1923. About 5000 breeding ewes will be brought back in November. Members of family operation are brothers, John and Henry W. Krebs, and their sons, Dick and Henry R. Krebs. Family has 6000 acres at East Glacier, Mont., and leases 18,000 acres from Indians.

in summer can cause almost as much damage to equipment as winter weather.

Pruning Bulletin Available

Pruning of shrubs and trees is a simple operation if you stop to think why you are doing the job. The simple reasons for pruning are to remove dead wood, broken limbs, and weak, twiggy growth. By the time you have done that you should have left nothing but good strong growth open to air, light rainfall, sun, and spray or dust, if and when needed. Strong growth should be cut very lightly and weak growth heavily in order to maintain the best plants or trees. As shrubs get old some of the older wood is removed to make room for new growth.

Early spring pruning is done on late blooming plants or ones blooming on current season's growth like the rose. Later, after blooming, we prune the early spring blooming plants and the evergreens that need thinning out or controlling of height. Extension Bulletin 784, available at this office, will be very helpful with the understanding of this necessary work.

Spray Aids Growth in Sand

A group of British scientists is spraying desert sands with nine parts mineral oil and one part latex rubber and getting crops to grow on the sand. The

Two Trackers Meet

The 4-H Two Tracker's club met May 4 at the fair grounds. The meeting was called to order by Judy Nyman. We answered roll call by giving our horse's name. All members except three were present. We had refreshments, which were furnished by Mrs. Smith. After refreshments, we went in the indoor arena and played some games. We have one new member, Frances Abrams.

Marcia Jones, reporter

WEDDING, PARTY and ANNIVERSARY Napkins with names imprinted; Monogrammed Playing Cards; Regency Personalized Note Stationery; Wedding Books. Inquire at Gazette-Times office. 49-1fx

We Will Deliver Your Processed Meat

Free Of Charge To Heppner, Lexington Ione.

WHOLESALE MEATS

CUSTOM SLAUGHTERING SCHEDULE:

Hogs Tuesday
Cattle Wed., Thurs.
Sheep Any Day

Follett Meat Co.
Hermiston, Oregon
Ph. JO 7-6651
On Hermiston-McNary Highway

spray lays a fine-mesh network of rubber film over sandy soil to halt erosion. Sprayed on sand dunes, the material has allowed grass seeds to germinate and grow, eventually holding the sand in place. Tests have shown seeds of peas, lettuce and onions can grow satisfactorily through the rubber film. Another use is to rainfall and channel it into areas where it can be used more effectively; a third is to stabilize soil structures which break down easily during rain.

Spray By GAR AVIATION

Weed Spraying
Fertilizing
Dusting
Seeding

YEAR-AROUND SERVICE

Armin Mel
WIHLON and BOYER
Lexington Airport

Lexington, Ore. Phone 989-8422



Had Enough Hi-Pressure?

We've taken the "high pressure" out of selling fertilizer and put it where it belongs—right in the root zone. A direct-to-the-root-zone application, that is, of Shell NH₃. Here's a way of putting on nitrogen near enough to roots so they can use it right away. And, precision-injected Shell NH₃ forms a uniform band of nitrogen large enough to keep the plant properly fed during the growing season. This means high efficiency feeding, resultant high yields, and low investment in fertilizer. Besides these three advantages, Shell NH₃ helps reduce the pressure on you in today's cost-price squeeze.

Inland Chemical SERVICE, INC.

*Aqua-M. Sol 32, Dry Fertilizer as well.

Heppner
PHONE 676-9103

Your growing success is our business




JUST PICKED? YES!

And next winter they'll look and taste just as good as they do today. Want the joy of just-picked vegetables and food all year 'round? Want a Supermarket in your home? Your Electric freezer works for you for just pennies a day to give you these conveniences. SAVES TIME SAVES MONEY SAVES WORRY SAVES GODNESS See your Electric Appliance dealer today... he has a freezer just right for your needs.



© NRECA

Columbia Basin Electric Co-op

Serving Morrow, Wheeler and Gilliam Counties