

Tupper Station Field Center for District Work

(Third in a series of articles on the Heppner Ranger district, Umatilla National Forest).

By WES SHERMAN

Tupper Guard station, located near the geographic center of the Heppner Ranger district, is also the center of field operations for the district. It is developing into a little community within itself and is scene of considerable activity in the summer time.

Its principal building is a dining-recreation hall with nice quarters for the cooks, Mrs. Elsa Leathers and Mrs. Dorothy Bromley, who live there. Electricity provides them with the means for refrigeration and freezing units as well as other appliances to serve the needs of their hungry crews. They may prepare an evening meal for 25-30 men on a normal day, and two years ago the place was hopping during the Ditch Creek fire, when men ate in shifts, the hall being filled almost constantly.

Another building does double duty as an operations center and winter-time bunkhouse; there is a new shower house with modern toilets; a garage-storehouse; and large tents that house the summer time crews.

The premises are kept as spic and span as a neat home in town with lawn mowed, weeds kept down, and concrete sidewalks clean.

Young men in the brush and suppression crews quartered at Tupper seem to enjoy their wholesome lives in the open air although removed through the week from city activity. They come from as far as Florida, although most of them are from the northwest.

After they have enjoyed one of the big dinners prepared by Mrs. Leathers (who makes homemade rolls and breads nearly every day) and Mrs. Bromley, one of two generally stay to help clean up. No one asks them to; they just do it.

A group will drift off to the tent to play pinochle, another bunch will pitch horseshoes, and a few others might embark on a game of Monopoly.

They have the privilege of the mess hall as a recreation center until 9, and then are required to clear out so that the cooks can rest. Lights out in the tents is at 10 p.m.

Eleven vehicles operate through the Heppner Ranger district, including one 2-ton stake truck, a 1-ton 11-passenger "crummy," a 1/2-ton 6-passenger crummy, two Jeep Carryalls with 4-wheel drive (each 5-passenger), and the rest pickups.

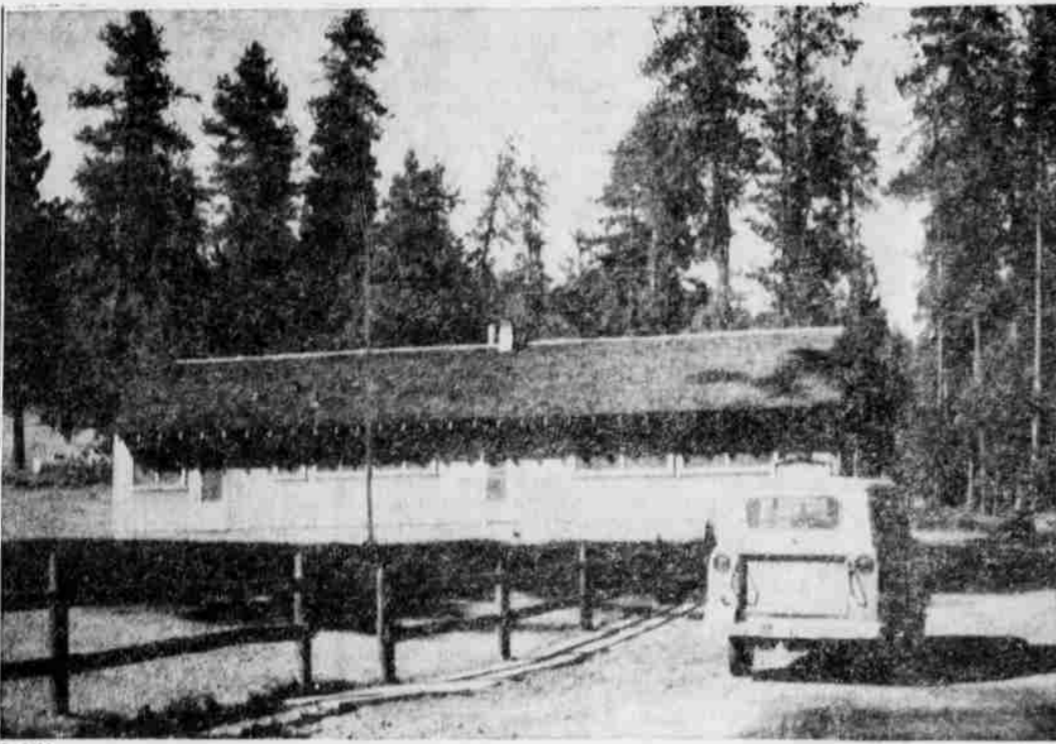
A visitor will notice that the men drive these vehicles very carefully, and for good reason. Even the slightest scratch or bump requires so much paper work and so many reports that the operator is unwilling to take any risk.

An interesting project in progress in the district at this time is its new program of signing. All the present painted signs are coming down and new routed wood signs, the rustic type, are replacing them. The job will soon be done throughout the district.

An interesting point is that these signs are also made by Federal "employees"—those being inmates of McNeil Island penitentiary in Washington. The district reimburses the penitentiary in payment for the signs. As with any public agency, the district has a job against vandalism, and these signs are often victims of those who use them for targets or rip them up in some misguided prank. They are valuable in directing those using the forest, and the district solicits the cooperation of all to keep them unblemished.

While the ranger district is under the constant surveillance of the foresters who are employed to manage it, they avoid leaving the feeling with the public that they are policing the forest users. They take the position that the national forest belongs to the public to enjoy with the multiple use program and seek only to see that necessary regulations are observed.

Planning is the key to the future of the district, and this entails a tremendous amount of paper work. District Ranger Sam Miller is now making his plans for the fiscal year 1964-65, and



CENTER of operations for the Heppner Ranger district in the field is Tupper Guard station. This shows the dining and recreation hall at Tupper. (G-T Photo)

most phases of the district are set up on 5-year plans. This district has tentative recreational development plans that extend to the year 2000.

Miller developed the district's current multiple use plan in 1962, and it is rewritten and re-approved to fit the district's planning.

One deterrent to public recreational development is the fact that private lands are interspersed in the national forest. Development of a reservoir in one area, for instance, might involve lands owned by private individuals.

Eventually the Heppner Ranger district will have summer home sites in organized areas available to the public. At the present time there are only two private summer homes in the district, and they will not be permitted to remain after their leases expire in 1965 and 1970 respectively. Policy is now for such summer homes to be located together at one organized site and not to permit them to be scattered through the national forest area.

Boardman Area Ripped by Winds

BOARDMAN—Winds of cyclone force tore through the west end of the Boardman project about 7 p.m. Monday evening, uprooting some 50 trees and doing other property damage.

At the Roy Partlow farm on the canal road two picture windows were blown out of the front of the house, roofs were torn off out buildings, and several trees were downed. At the Charles Dillon place further north of the canal nearly 20 trees were downed, and a small building being used for sleeping quarters near a trailer house, owned by Mr. and Mrs. Warren Dillon, was smashed flat. A car nearby was also smashed by a falling tree.

Had the storm happened a few hours later, more tragic results might have resulted as teenage Jimmie Dillon would have been sleeping in the small building. Other farms had many trees down. The east end had very little wind, nor did the town of Boardman. Rain accompanied the storm, and lightning started at least two fires on the bombing range. These were extinguished by rain and navy personnel.

Electric power was off on the whole project and in the city, too. The east end and town had service restored by 9:35 p.m., but the west end did not get any until 2 a.m. Umatilla Cooperative crews from Hermiston worked to restore service most of the night.

The temperature had been as high as 102 degrees during the day in town.



RIGID PHYSICAL training is a part of the life of members of the U. S. Forest Service fire suppression crew. Here they do some "back busters" at Tupper Guard Station. At left is Roy Mesler and at right is Kenneth Daggett, the latter of Heppner. In background is Jerry Reeves, acting crew foreman. (G-T Photo)



PROBABLY THE most comfortable of the three lookouts in the Heppner district of the Umatilla National Forest is the Wheeler Point lookout, which overlooks the John Day basin to the south. It was built in 1960, stands 67 feet high and has spacious 15x15 ft. quarters at the top. (G-T Photo)

Parade to Offer \$475 in Prizes Again This Year

(Continued from page 1)

sis, according to Randall Peterson, who is in charge of the judging: Theme, 30%; design, 40%; quality, 20%; originality, 10%.

Prizes for floats will be offered in three divisions: juvenile organizations, adult organizations, and businesses, each receiving prizes of \$25, \$15 and \$10 for first, second and third. In addition, the three first place winners will compete for the grand sweepstakes of \$50.

The best float out of the county will receive a \$15 first prize, and the second best will receive a \$10 second prize.

Other prizes offered in the parade are as follows: Best riding club—\$35, first, \$20, second; best family group (mounted), \$7.50; best mounted cowgirl, \$7.50; best mounted cowboy, \$7.50; oldest cowboy, \$5; oldest cowgirl, \$5; best comic, \$10.

Bands, \$15, first, \$10, second; hoists, \$7.50, first \$5, second; cars (oldest and best shape), \$10, first, \$7.50, second; surreys, \$7.00 first, \$3.50 second.

It is not necessary to submit entry in advance of the parade to compete for a prize, but it may be helpful to call Peterson and inform him of entries to help in planning for the parade.

County's Harvest 75 Per Cent Done; Total Near Record

Grain harvest in Morrow county was estimated by Al Lamb, manager of Morrow County Grain Growers, to be 75 per cent completed by early this week.

"It is one of our better years," he said. "The total will be a near record."

In the northern part of the county the harvest is virtually complete, and the North Lexington and McNab elevators have been closed. All the rest of the MCGG elevators, however, are still in operation.

Some growers in the southern part of the county were just starting last week but probably most of the late ones are well along now.

Quality of the grain appears good on the average, Lamb said.

No figures are available yet on the total yield but they will be compiled within a few weeks, and it is expected that they will show that the county is close to a record harvest.

Coach Sutherland To Issue Suits August 23 and 24

Coach Jim Sutherland, Heppner High football mentor, has sounded the first call for practice and announces that he will issue suits to aspirants on Friday and Saturday, August 23 and 24, from 2 until 4 p.m.

Lettermen are to report on August 23 for their gear and non-lettermen are asked to be on hand during the afternoon of August 24.

The coach will start practice on Monday, August 26, at 10 a.m.

Thirteen lettermen are expected back, and the coach looks for as good a year as the Mustangs had last year. A good carryover from the strong javays of last year is expected to

bring the turnout for the season to about 50 candidates.

First game of the season will be Enterprise again, this time there on September 13, a non-conference fray.

First home game will be on Friday, September 27, with Umatilla as the opposition.

First full-game scrimmage under the lights will be Saturday, September 7.

My Neighbors



DANISH MODERN TV



RCA VICTOR New Vista TV

- 23" tube (overall diag.)—282 sq. in. picture
- Super-powerful "New Vista" Tuner
- 22,500 volts of picture power (design average)
- Bonded-on glare-proof safety window
- Dependable Space Age Sealed Circuitry
- Extended-range Duo-Cone speaker

OUR PRICE \$279.95

GONTY'S



BARGAINS FOR

Back-To-School

FRIDAY and SATURDAY

August 16 & 17

Buy Early and Save!

Reg. 39c Belmont PENS 19c

HI-TONE
Reg. 50c Typewriter TABLET 39c

REG. 25c EACH
FILLER PAPER, - - - - 4 for 89c

Reg. \$1 Retractable
BALLPOINT PENS

59c

Reg. 2 for 15c
BEGINNER PENCILS

Now ea. 5c

SEE US FOR EVERYTHING
IN SCHOOL SUPPLIES

3-RING
FILLER
PAPER
500 Count
Special
\$1.79



Humphreys Rexall Drug

BACK-TO-SCHOOL
BELL RINGERS



BOYS' JEANS —
Lee's, Wranglers and Levis — \$3.98 up

BOYS' SWEATERS and SHIRTS
Jantzen, \$2.98 up

BOYS' BRIEFS and T-SHIRTS
Carter's, 89c and \$1.00

GIRLS' CORDUROY COATS
\$12.95 and \$14.95

JANTZEN SKIRTS and SWEATERS
\$7.98 up

Elma's Apparel

233 N. MAIN HEPPNER PH. 676-9426

HOSPITAL

Patients admitted to Pioneer Memorial hospital for medical care during the past week are the following: Harry Coghill, Condon; Mary Lindsay, Ione; Raymond Medlock, Hardman; Sarah Strait, Heppner; Charles Moore, Mayville, and Mildred Winters, Heppner.

Those dismissed during this same period are: Clara Gertson, Heppner; Clarence Buchanan, Heppner, transferred to Pendleton; Morris McCarl, Lexington; Robert DeSpain, Arlington, and Patricia Van Schoiack, Heppner.

Mr. and Mrs. James Montgomery of Condon are parents of a 6 lb., 12 oz. daughter, born Friday, August 9. The little girl has been named Debara Lea.

An 8 lb., 6 oz. daughter was born Monday August 12, to Mr. and Mrs. Clarence Bare of Condon. She has been given the name Teresa Marie.

Mr. and Mrs. Don Falloni of Condon, are parents of an 8 lb., 6 oz. daughter, Angela Kamilg, She was born Thursday morning, August 15.

Mr. and Mrs. Donald Heliker, Ione, and Mr. and Mrs. John Graves, Hardman, left today (Thursday) for a month's vacation trip up the Alcan highway, expecting to travel as far north as Fairbanks, Alaska.

