

County Agent's Office

# Wheat Samples Taken For Protein Testing

By N. C. ANDERSON  
As reported in this column previously, a number of samples of wheat are being taken for protein tests with the plan in mind that these tests then be correlated with type and depth of soil, variety, date of planting, nitrogen application, and yield. Norman Goetze, Extension Farm Crop Specialist, Oregon State University, is in charge of correlation work. Eleven samples were taken on July 18 from fields that were being combined at that time. The rest of the samples allocated to Morrow county were collected last Friday.

We ended up with a good representative sample, which included Orford from the Jim Lindsay-Earl McCabe ranch, Ione; Regua from Bert Greig, Lexington; Baart from Tom Ashbeck, Echo; Brevor from Hunt Brothers, Lexington; Idaed 59 from Paul Tews, Ione; Turkey from Glen Campbell, Echo; Golden from Roger Palmer, and Barton Clark, Heppner; Gaines from Lewis Halvorsen and Jim and Earl Pettyjohn, Ione; William J. Doherty, Lexington, W. C. Rosewall, and C. N. Jones and Sons, Heppner. Burt from Don Pinner,

Alvin Wagenblast, Tad Miller, Al Fetsch, W. C. Van Winkle, Bob Lovgren, Larry Lindsay, Lexington, and Burl Akers, Ione. Omar samples were collected from Raymond Lundell, Ione, Laurence Becket, Ralph Beamer, John Lane, Archie Munkers, and Frank Anderson, Heppner, and L. E. Ruhl, Lexington.

All of these samples are collected from trucks delivering wheat to the elevators and in most cases information on date planted, nitrogen applied, soil type and depth and approximate yield were not available from the driver. Contacts will need to be made with these people to gather this information before actual correlation is done. It is interesting to see some protein tests that have been returned to the Morrow County Grain Growers. These vary considerably by varieties.

Of special interest are protein tests which were run on Gaines produced in the county last year. Samples that were gathered for seed certification were available and made use of in this way several weeks ago. From Morrow county, protein varied considerably from 6% at the L. H. Hill ranch in Eightmile, to 13.2% at Kenneth Peck's in Clarks Canyon. The 13.2% protein wheat came from dry land wheat that had 30 pounds of nitrogen as a top dress and had been reduced some in yield. Other protein tests run as follows: Louis Carlson 7.5, Alvin Bunch 8.2, Raymond French 8.6, William J. Doherty and Fritz Cutsforth 9.6, L. L. Howton 10.5, Kenneth Turner 10.8, Gar Swanson-two samples 10.6 and 11.6, David Baker 11.5, Melvin Moyer 12.0.

State-wide, the protein content ranged from a low of 6% to a high of 14.1 percent. These are all figured on a 14% moisture content, which is the approximate amount of moisture the miller requires when he begins his operations. This moisture is added to facilitate milling and because of this these samples are being determined on that basis. The wheat trade has urged this year that where possible both white club and common varieties be separated and stored in a protein basis with the suggested dividing line of 9% protein on a 14% moisture basis. All Morrow county elevators are doing an excellent job of separation and storage.

**SAVE while you get better control of Horn Flies and Face Flies**

with **FRANKLIN BRICON**

**BACKRUBBER INSECTICIDE CONCENTRATE**

1 Pint makes 5 Gal. Contains KORLAN.

Formulated to resist leaching from rainfall. Economical!

Mix 1 pint with 5 gallons of oil. UNUSUALLY EFFECTIVE!

**HUMPHREYS**  
Rexall Drug  
217 N. Main Heppner  
Ph. 676-9610

# FARM NEWS

Chats With Your Home Agent

## Annual County Fair Acts As Local 'Morale Booster'

By ESTHER KIRMIS  
Mrs. Jim Lindsay, Ione, called me the other day regretting the fact that she could not act as General Home Economics chairman at the Morrow county fair this year. She has had an operation this summer and is not making as rapid a comeback as she had anticipated.

Women fair committee members, Mrs. William Rawlins and

Mrs. L. A. McCabe, Ione, were notified and they prevailed upon Mrs. E. M. Baker, Ione, to take over the chairmanship.

Perhaps one of the greatest strengths of the Morrow county fair (to be held in Heppner August 19-23) is that it is organized and carried out by local people. With the exception of the county extension agents, they give their time and talent, without pay, for the good of the community.

The Morrow County Fair and Rodeo is under the general responsibility of the fair board made up of Al Fetsch and O. W. Cutsforth, Lexington, and Bernard Doherty, Heppner. They, in turn, have delegated the duties of planning and running these two events to two separate committees, a fair and a rodeo committee.

A look at the premium book for Morrow County Fair shows a listing of over 100 men and women working as superintendents in the various fields that will insure a well rounded fair.

Appointed on the fair committee for 1963 are Don Robinson, Heppner, (chairman), Mrs. L. A. McCabe, Ione; Alfred Nelson, Jr., Lexington; Don Greenup, Heppner; Mrs. William Rawlins and Mrs. Jim Lindsay, Ione.

Who comes to our fair? 4-H kids, 4-H parents, their grandparents and friends. In the livestock field you'll find the livestock raisers; the horse fans; grain, fruit, flower and vegetable growers; the skilled in clothing, needlework, foods and canning and hobbies. New this year is a "Children's Corner" for all children between the ages of 6 and 14 (as of Jan. 1). Lots are in clothing, needlework, knitting, hobbies, canning, foods, candy and flowers for the young fry.

Late this spring the Heppner Soil Conservation supervisors agreed to purchase a supply of place mats for banquets and luncheons. The place mats were prepared in cooperation with the Soil Conservation Service and were aimed at a "quiz-cial" looked at soil and soil sustenance. The mats were used for the first time at the Heppner-Morrow County Chamber of Commerce last Monday, and it was interesting to know that at least a few of the businessmen noticed them. One of our doctors pointed out that a statement that medical care is up more than twice as much as food did not mean doctors care, but hospital and medicines. There were other comments on the question and answer place mats, which proved that this was a thought provoking public relations "gimmick." We were happy to note this interest.

County organizations also get into the act by putting up community booths that will tell their story to the public. Seventeen booths, which were built last year, will again be used. It's an annual community

### Cream Imports Get 'Eye' From U.S. Dairymen

Beef and sheep men have shown quite some concern in late years as a result of the amount of New Zealand lamb and beef being shipped into this country. While many maintain that the supply is only a small percentage of the total meat supply, it still goes without saying that any replacement means less market for our own meat production.

It was interesting this past week to see the response of dairymen and newspapers when a foreign cream import was made into Seattle. A 20,900 pound shipment of sweet cream from New Zealand landed in Seattle in mid-June. The shipment consisted of 418 cartons, 50 pounds each, of pasteurized sweet cream. The cream was frozen and transported in a refrigerated unit.

When quizzed, the creamery concern that shipped it in claimed they had nothing to do with it and did not want to talk about it, and indicated they did not plan any more of these imports. They said however, that a factor concerning its use was the cheaper prices contrasted to local cream prices. In addition to this 20,900 pound Seattle import, 290,000 pounds landed at San Francisco and 395,000 pounds in Charleston. According to the U.S. Bureau of Customs, known imports of foreign cream containing 44% butter fat have totaled more than 3.4 million pounds since the first of the year.

### Herefords Tops in Production

A Hereford herd with a 98% calf crop marketed at 198 days of age, weighing 438 pounds, with a production cost of \$51.92 per head, won the top award for stocker and feeder calves in the Kansas Beef Production contest. This contest, open to all breeds and cross-breeds, is sponsored by the Chamber of Commerce, Kansas City, Missouri and Kansas State University. Herefords swept all the top honors in both the stocker and feeder division as well as winning the deferred-fed steer and heifer contests. The nearest competitive breed in the stocker and feeder division had a cost of production of \$86.37 per head. In the creep-fed contest, the Herefords owned by Dale Grothusen, Ellensworth, won their honors with a 95% calf crop, marketed at 430 days, weighing 956 pounds and made \$124.23 per head.

Purchasing registered rams at the Willamette Valley Ram Sale Saturday were Howard Pettyjohn, Terry and Sue Greenup, Heppner, and Mrs. Mary Doherty, Lexington. Howard bought a Shropshire, the other two were Southdowns. All were of excellent quality. At least a part of the market lambs sired by these rams will be used for 4-H club projects.

## Four-H Horse Show Gets 'Go' For August 19

Morrow county 4-H horse club members can look forward to their horse show at the county fair on Monday, August 19. Joe Hay, county extension agent announced recently.

"There has been some doubt about having a 4-H horse show this year due to an outbreak of horse influenza in parts of the state," Hay said. "A letter from Dr. Glenn B. Rea, Oregon State department of agriculture chief veterinarian, dated July 18, strongly recommended against any congregation of horses for a period of at least three weeks."

Four-H horse club leaders, at a meeting Sunday afternoon, decided to continue planning for the 4-H horse show on Monday, August 19. They indicated this date was one and a half weeks past the restrictive date set by Dr. Rea. However, should an outbreak of the disease occur in the county before fair time, the event would be cancelled.

Several horse shows in the Willamette valley area have been cancelled because of some cases of influenza in that area. However, as of this writing, the state fair 4-H horse show is still scheduled.

Four-H horse club members will be kept informed by letter of any new developments should conditions warrant cancelling of the county show, Hay indicated.

### 'Morale Booster' which is eagerly anticipated each year.

Open class exhibits will include beef, sheep and wool, hogs, dairy cattle, poultry and rabbits, saddle horses, hay and grasses, grain, fruits and vegetables, and community booths.

Under general home economics we find clothing, needlework, hobbies, knitting, canning, food and flowers.

For the kiddies there is the pet show and children's corner. Four-H home economics lists foods, 4-H clothing, style revue, knitting, 4-H judging contests, and 4-H demonstrations.

Four-H agriculture includes the 4-H auction, 4-H pig scramble, and saddle horse.

Miscellaneous includes 4-H rifle, fishing, rockclimbing, and photography.

The Future Farmers of America will have livestock exhibits and a booth.

## Snack Shack Open During 4-H Fair

The most popular shack in town will open its doors on Monday, August 19, at the Morrow County Fair and remain open for five days, according to Mrs. Wilbur Van Blokland, general chairman of the 4-H Snack Shack.

Newly constructed last year, the Snack Shack is run by the 4-H council for the support of various 4-H activities during the year. These include 4-H camp, fair floats, and booth, 4-H Style Revue, National 4-H club week and the IFEY (International Farm Youth Exchange) program, advises the 4-H council.

Hamburgers, french fries, soft drinks, candy and ice cream will be served during the five days. Breakfasts, beginning at 6:30 a.m. on Tuesday will include flapjacks, bacon, eggs, and coffee, say the committee.

Four-H parents and leaders will staff the Snack Shack which will open at 11:00 a.m. on Monday (August 19) and remain

## 'Help' Days Scheduled For 4-H Demonstrators

Finishing touches will be put on 4-H demonstrations for the Morrow County Fair at the demonstration "Help" days scheduled for August 15 and 16, according to Esther Kirmis, Morrow county extension agent.

Individual help will be given to each demonstrator between the hours of 10:00 a.m. and 4:00 p.m. at the Heppner Fair Annex Building, Heppner, on August 15, and Old Irrigon school on August 16.

Morrow County Extension units, the CowBelles, and other organizations are offering special awards for 4-H demonstrations, according to the fair premium book.

open until 7:00 p.m. on Friday evening, (August 23). The 4-H Snack Shack committee includes Mrs. Wilbur Van Blokland, Mrs. Gene Hall, Mrs. N. C. Anderson, and Mrs. Harold Wright, all of Heppner.

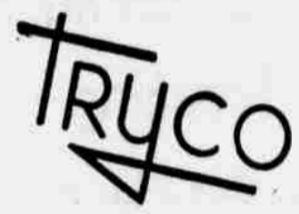
Tell the advertiser you saw it in the Gazette-Times.

# Seeding Supplies

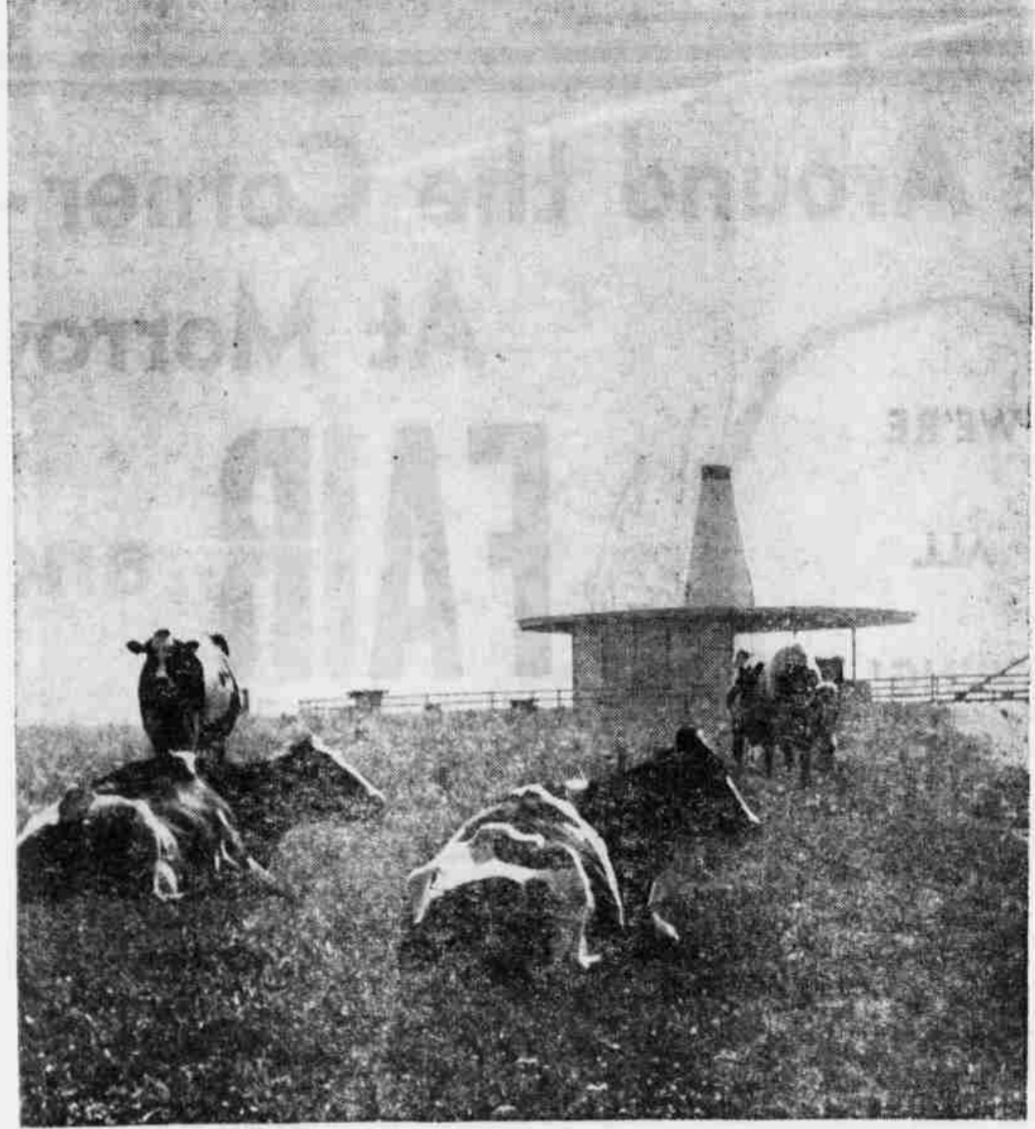
See our selection of new and used drills.

If you don't see what you want here, come in and check. We probably have it at one of our other three stores.

GIVE US A TRY BEFORE YOU BUY



Tri-County Equipment Co. Heppner Ph. 676-9258



## Cow pasture pathfinders speed your flight

Your plane travels unseen roads—superhighways in the sky! These roads are actually directional beams from cone-shaped omnirange radio stations which dot the countryside. They guide flights, day and night... make flying safer, routes shorter.

Now, you can safely fly almost anywhere, in almost any weather, because nearly 1,000 locally-owned and operated rural electric systems can power radio pathfinders even in remote spots like this cow pasture.

These flight aids dramatize a growing need for rural electric power that's doubling every six years. New homes and schools, electrified farms, rural industry, and defense outposts use

four to five times more power than original lines were designed to carry. Keeping ahead of demand calls for bigger poles, larger wires, heavier transformers, and more power!

Rural electrics are tackling this big project, which may cost more than original lines. They're also reaching out to serve the million rural people still without electricity.

Fulfilling this growing need requires additional Rural Electrification Administration loans. Fortunately, rural electrics have always been good risks. Already, they've repaid \$1 1/2 billion in principal and interest on their \$4 billion REA loans. This is more proof rural electrics are good for all Americans.



# Columbia Basin Electric CO-OP

SERVING MORROW AND GILLIAM COUNTIES

The GREEN HAND OF PROGRESS IS

**Brea**

More and more grain growers are boosting yields and profits with Brea Aqua and Brea Aqua with Sulfur.

Brea Aqua has distinct advantages as a nitrogen carrier for grain crops. It stores exceptionally well in the soil and is easily applied to fallowed ground.

We are selling more Brea Aqua with Sulfur each season.

Call us and we will come out and show you how Brea Aqua can pay off for you.

If it's long distance, call collect.

**Bi-County Chemical Co.**

**Brea** FERTILIZERS

Arthur A. Stefani, Owner  
Box 218, Ione, Ore.  
Bus. Ph. 422-7531  
Home Ph. 422-7147

PRODUCT OF CALUMET CORPORATION