

**TREE TOWN**

Every year about this time, Shelton, Washington, in the heart of the great timberlands of Mason County, broadcasts its slogan to the world. It is "Christmas-town, U.S.A." Christmas tree farms ship their products across the world. The young decorative trees are Douglas firs.

**MAKE ORNAMENTS**

You can fashion your own Christmas tree ornaments with aluminum foil plates. With scissors, paints, glow papers, baubles, and foil plates, you can construct various designs and many color combinations. Foil plates are inexpensive and easy to work with.

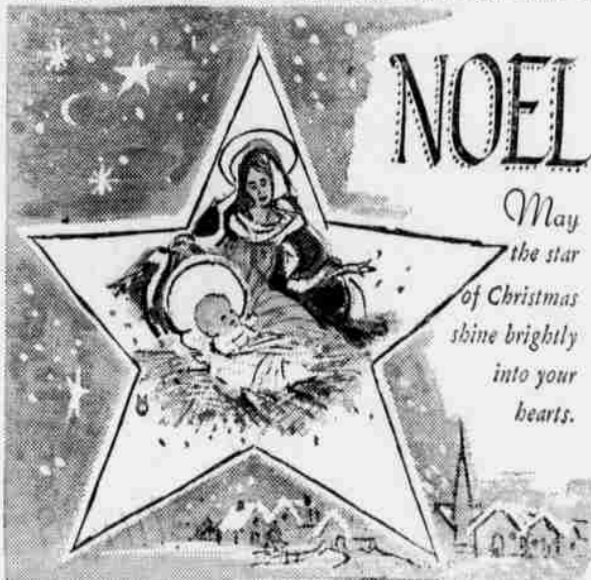


FOR THOSE LAST MINUTE GIFT IDEAS  
slips, gowns, robes, pajamas, hosiery, blouses, sweaters, dresses

**MILADIES**

ALICE and GRACE

PH. 676-5561



**HAGER'S DAIRY**

JIM JEWELL FRANK VERN LINCOLN PHYLLIS



**CORNETT GREEN FEED**

**Chats With Your Home Agent**

**C-h-r-i-s-t-m-a-s Spells Out Highlights of 1962**

By ESTHER KIRMIS

Warmest holiday greetings to you readers. May we wish you and yours a very Merry Christmas!

In Christmas, acrostic fashion, we'd like to fill you in on the highlights of 1962.

**C**—reminds us of "Chateaub," a week's recreational training workshop we attended in May at Lake Chateaub, near Plumer, Idaho. Also a communications workshop at the University of Oregon, Eugene, which was a week's inspiration.

**H**—stands for our Morrow County Four-H Camp in the Blue Mountains 20 miles southeast of Heppner. We camped out with 60 4-H youngsters.

**R**—denotes Roberta Fraiser, OSU Family Life Specialist, who spearheaded a study on "Understanding Boys and Girls" in the county. Close to 50 adults took part. She was also Homemaker Festival speaker to over 100 women in May.

**I**—indicates our celebration of National 4-H Club Week in March. Twenty store windows in the county were decorated, five bulletin board displays were set up in all the county schools, 324 4-H member tags were worn by 4-H members. Heppner Gazette-Times published a seven-page 4-H edition, 65 businesses gave 4-H advertisements. Nine churches conducted 4-H Sunday services, three Granges had 4-H programs, and two Heppner business organizations entertained 4-H clubs. A Bang-up Week!

**S**—Makes us think of Oregon's 4-H Summer School in Corvallis in June. Over 2,000 4-H members attended (35 from Morrow County) a week of classes, sports, and dances. Your agent taught a class four days on "Fun With Children."

**T**—the seven extension units in the county that are the backbone of the county's home economics program. In 1962 they studied such things as "Understanding Teenagers," "Mating with Mises," "Bedroom and Bathroom Storage," "Wardrobe Building" and others. Extension units are like classes at OSU. Not everyone can go to OSU, but OSU comes to everyone that wants it.

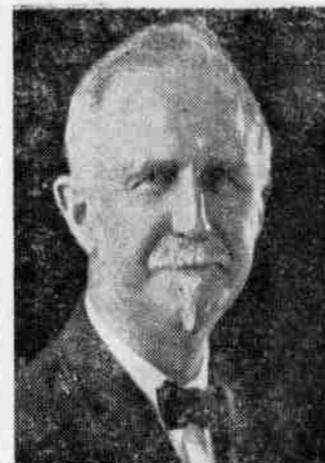
**M**—is the Morrow County

Fair in August which is the highlight of the 4-H year. Exhibits, contests, demonstrations and style revue. Name it and we've had it. Speaking of fairs, all three agents visited the World's Fair in Seattle in 1962 along with several million Americans.

**A**—accounts for the "Big Oregon Blow" on Columbus Day which we experienced in Corvallis. Winds over 100 MPH took lives, destroyed trees, buildings, automobiles, etc. It was an experience that made us think seriously of civilian defense plans.

**S**—signifies the first salmon your agent caught. Went deep-sea fishing out of Winchester Bay in August. What a thrill! The salmon is in cans already to be given as Christmas presents now.

May 1963 be your best year!



Roger W. Babson  
**Paper to Publish Babson's Forecast**

The Gazette-Times will publish "Babson's Business and Financial Forecast for 1963" on December 27.

A careful checking of the Babson predictions made in the Business and Financial Forecast for 1962 upholds the remarkable average of the past years by being 86% correct. It holds the best and highest record for Annual Forecasts on U. S. Future Business.

**OSU Runs Tests On Wheat Wafers For Food Use**

Oregon State University students will help evaluate special whole wheat crackers that Oregon families may some day find useful in an emergency.

Work will be started this winter at OSU to evaluate 16 whole wheat wafer recipes developed by the U. S. Department of Agriculture as survival rations for fall out shelters. An \$88,000 grant will be used over the next five years to conduct the study.

Basically, wafers are made from whole wheat, fat, dry malt extract and salt. Lightly toasted during processing, they're flaky and rice-like in texture. A versatile food, they can be topped with milk and eaten as cereal, eaten with soup, or can be spread with jam or peanut butter for sandwiches. Dry wheat wafers are quickly heated by topping with a hot meat sauce or gravy.

Big advantage of the wafers is that they satisfy needs and tastes of most people. If allowed to stand in milk, wafers become mushy enough for the toothless to enjoy. Variations of the basic wafer recipe include added cheese, fruit, bacon bits and powdered milk.

Wafers will be stored at 24, 70, and 100 degrees F. temperature for five years. Students will test for flavor every six months during the five-year storage period. OSU workers also will examine crackers chemically for flavor breakdown.

All wheat wafers used in OSU tests will be sent from the USDA Western Utilization Research Laboratory in Albany, Calif. Wafers are packed in sealed cans during storage.

According to research workers,

**THE GIFT THAT KEEPS ON GIVING**



Mrs. Lila Masson of Detroit, Michigan—Mrs. America—shares her joy with all Americans in receiving a U. S. Savings Bond among her gifts. She says the gift was particularly appropriate, since regular buying of Savings Bonds is a family habit in the Masson home. The gift of an extra Bond during the Yule season is something she recommends to every family.

All Moore business forms available through the Gazette-Times. You need not go out of the county to get the forms you need.



**Merry Christmas**  
Our warmest wishes to all our good friends!

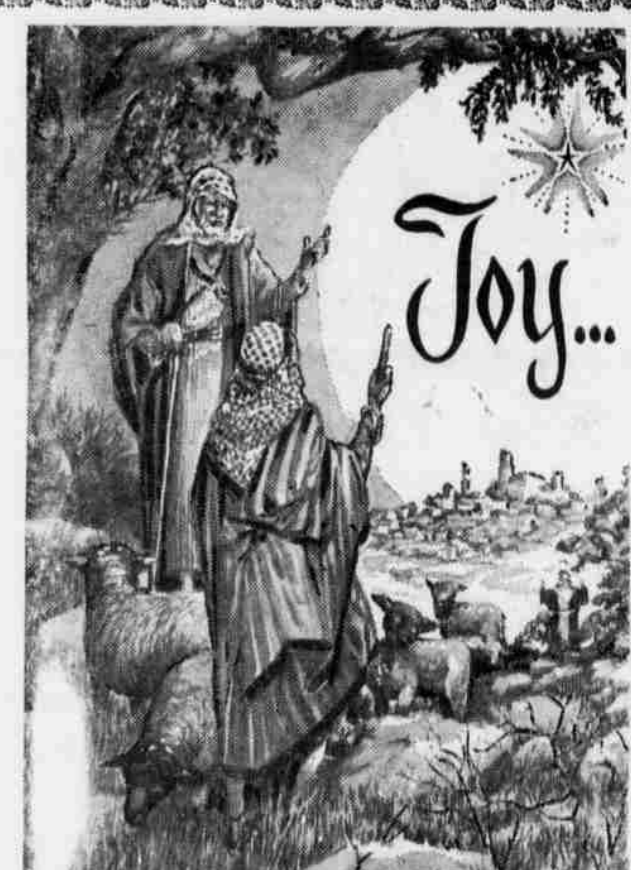
**Ron's Flowers**  
HEPPNER



**GREETINGS**

Merrily, merrily we sing out our wishes to you for the happiest holiday season ever!

**WESTERN AUTO**  
JOHN and BETTY PFEIFFER



**at Christmastime**

May the Star of Bethlehem beam its blessed light of love and peace on you and your loved ones... and through all the world, always.

**MORROW COUNTY ABSTRACT AND TITLE CO.**  
HARRY O'DONNELL

**YOUR HOME FACTORY (MORROW COUNTY CREAMERY) TAKES THIS MEANS OF EXTENDING GREETINGS AND GOOD WISHES--**

ALSO APPRECIATION FOR THE PATRONAGE FOR THE PAST YEARS, AND WE ASSURE YOU THAT WE WILL CONTINUE THE SAME SUPERIOR QUALITY THAT HAS KEPT YOUR FACTORY IN BUSINESS. ITS PRODUCTS REMAIN THE BEST BY TEST.

**Morrow County Creamery AND STAFF**  
BILL — CLAUDE — DUD — MAC

**GREETINGS**

... and best wishes for a joyous Holiday Season to our many loyal friends and patrons. We extend our heartfelt thanks and warmest wishes to all of you.

**CENTRAL MARKET**