

# Cardinals Blast Culver, 33 to 6; Riverside Game Next Sept. 28

Showing early season fire and unexpected polish, the lone Cardinals ran roughshod over Culver in 8-man football at Culver Saturday, 33 to 6.

Coach Glenn Biehl's team tallied in every quarter and twice in the second period, while the Culver team was able to hit paydirt only once—via the aerial route—in the second stanza.

In total offense, lone racked up 287 yards against 128 for Culver, according to figures of statistician Joe Hausler. The Cardinals made 13 first downs to 8 for Culver, and all but two of the winners' first downs came from rushing. One was from passing and one on a penalty.

By contrast, Culver made five on passes and three on rushing. lone made a total of 244 yards on the ground to only 13 for Culver, but the losers picked up 115 on passes to 43 yards for lone through the air.

Ron Crabtree, playing the quarterback spot, scored in the first quarter from the 6-yard line, and the extra point was

added by Ken Klinger, also on a plunge.

Klinger went into paydirt in the second quarter on a short gainer and Crabtree made the extra point. The third touchdown was a pass, Crabtree to Tom Heimbigner, good for 27 yards to the end zone. The extra point try failed.

In the third quarter, Crabtree broke loose on an end sweep from a quarterback option play and romped 30 yards to tally another six points. The point try again was no good.

Final touchdown for lone was a result of a pass interception by Klinger. He traveled 15 yards after taking the interception to score. Les Madden plunged for the extra point.

A pass, Ernest to Burke, brought the lone Culver touchdown in the second quarter. It was good for 15 yards.

Leading ground gainer for the Cardinals was Klinger with 132 yards in 11 carries. Crabtree made 80 yards on nine carries, and Madden gained 52 on 14

tries. Coach Glenn Biehl was highly pleased with the opening showing of his team, except for pass defense.

"We expected to be weak on pass defense, though, because we haven't practiced on it yet," he said.

The coach credited the line with a fine job and particularly cited Joe Halvorsen and Marv Padberg as outstanding. Three ends, Jim Martin, Heimbigner and Rollie Ekstrom, were praised for their good work, and Gary Morgan and Madden were "tremendous" as linebackers, the coach declared.

With praise also for the backs, Coach Biehl said, "We looked a lot better than I dared hope."

Culver was outclassed in all departments except passing and they completed 11 of 20 in that department, a good average in any game, lone attempted only six passes and completed two. Each team intercepted one pass. lone fumbled five times and lost the ball twice; Culver fumbled four times and lost possession twice also.

lone suffered six penalties for a total of 60 yards and Culver was whistled for seven infractions or 44 yards.

This week the Cardinals draw a rest, and do not play again until September 28 when they meet the strong Riverside team at Boardman at 2:30 on that day.

Score:  
lone 7 13 6 7—33  
Culver 0 6 0 0—6

## Grade School Ponies Practice For Opener

Thirty-two young seventh and eighth grade football aspirants greeted coach Tom Hughes and his assistant Clint Agee for practice September 4 with the passing out of suits. They followed the next evening with practice from 4 to 5:30 p.m. and are continuing each school day evening.

The coaches have 14 eighth graders in suits and some of them have last year's experience. Eighteen seventh graders are vying for spots on the team which opens its season next Thursday, September 27, at lone. Starting time is 2:00 p. m. The two teams will field 8-man teams. More games are planned for the local team but as yet they do not have a complete schedule.

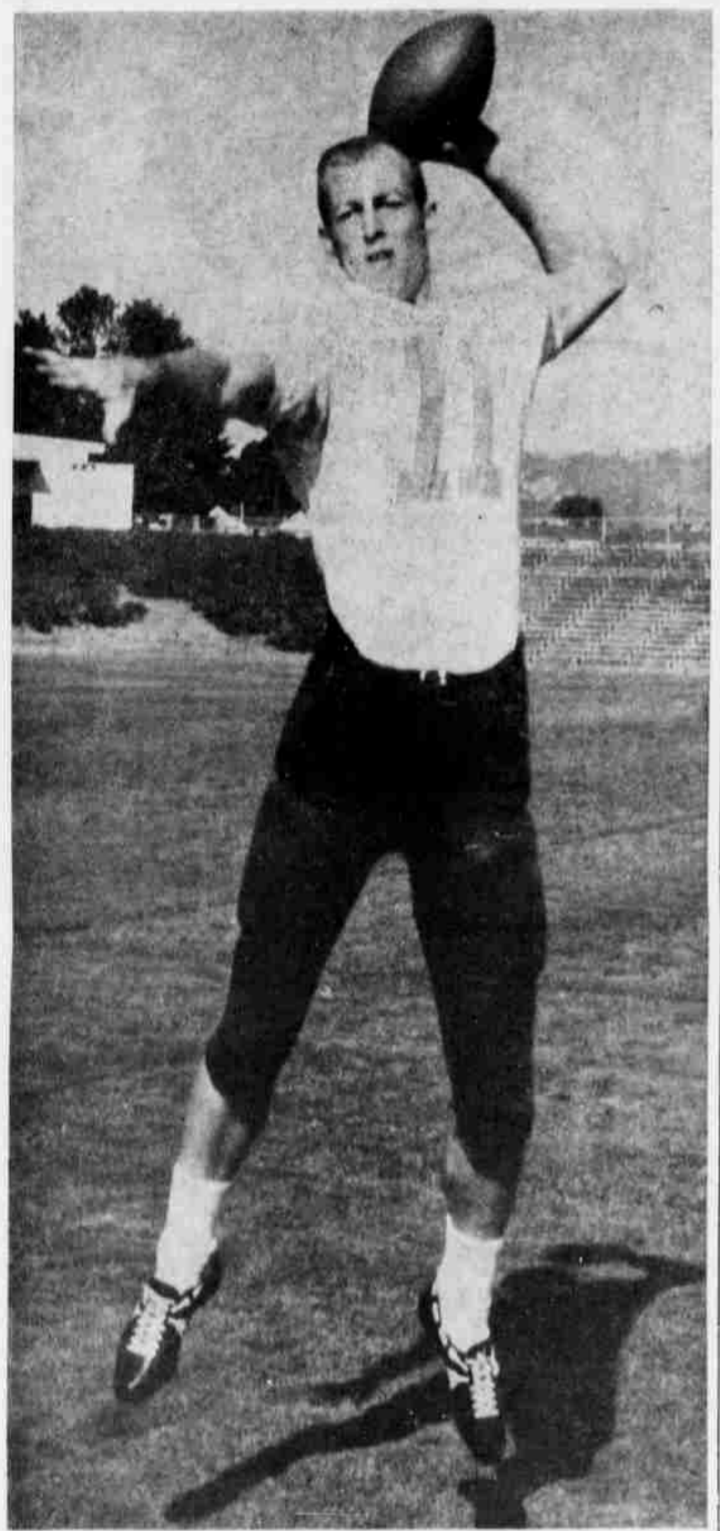
Both coaches worked with the boys, teaching them the fundamentals of the game and positions, and this week are doing contact work and scrimmaging in preparation for the opener.

One aspirant was lost for the season last week when Alfred Drake, 7th grader, suffered a broken arm in a fall during practice. This was the first accident that has occurred since Hughes and Agee have been coaching. Alfred's arm was placed in a cast and he has returned to school.

Eighth graders out for the team are: Rick Johnston, Jeff Turner, Jim Doherty, Dick Wallace, Nalbro Cox, Mac Hoskins, Bob Harris, Lennie Hanna, Steve Baker, Jack Ray, Bob Van Winkle, John Dubuque, Roger Leonig, and Stan Rauch.

Seventh graders include: David Hall, Steve Pettyjohn, Bill Stockard, Bill McLeod, Kit Anderson, Jim Sherman, Gary Ball, Frank Lovgren, Frank Unrein, Earl Ayers, Tim Loyd, Russel Kilkenny, Randy Stillman, Bob Dobbs, Terry Corbin, John Van Winkle, and Matt Hughes.

If you want to be original, be yourself. God never made two people exactly alike.



TERRY BAKER, Oregon State's candidate for All-American honors, will be matched against Iowa State's great back, Dave Hoppman, in the first big football game of the college year in Oregon when the two teams take the field in Multnomah stadium Saturday night. Baker, shown tossing a southpaw pass in practice, has had a slight knee injury in recent days but is expected to be ready to go when the teams square off.



HEPPNER HIGH'S football squad presents the appearance of a small army in this photo. Identification of the boys may be made by number, using the roster on page 3 of section 2, this paper. Coaches are (middle row, left) Athletic Director Bob

Cantonwine and Dick Strait, joyee; and middle row, right, Pete Glennie, assistant, and Jim Sutherland, head coach. Managers, at opposite ends of front row, are Dennis Warren and Bill Weatherford. (G-T Photo)

# Savages Scalp Mustangs, 20 to 0

With an all-veteran team specializing in quick openers and razzle dazzle play, the Enterprise Savages defeated Heppner's Mustangs, 20 to 0, in Heppner High's home opener Friday night.

But after the game, Coach Mel Victor of Enterprise paid tribute to the Mustangs when he said that they were "300 per cent better than last year." Enterprise defeated Heppner last year at Enterprise, 27 to 0.

There was nothing lopsided about the ball game unless it was the final score. The Mustangs picked up five first downs in the contest as against six for the winners and made 102 yards from scrimmage as compared to 172 for Enterprise.

Enterprise scored on the last play of the first quarter when Ron Waggner pitched a pass to Howard Talbot into the end zone from 15 yards out. This came after Waggner had intercepted a Heppner pass near midfield and returned it to the Heppner 30. Waggner gained 12 on an end run to the 18 and a couple more plays ensued before the touchdown pass was tossed.

Second touchdown for the Savages came in the second after Heppner had knocked on the door but had been thwarted. Lee Padberg, playing his first game for the Mustangs, rambled nearly 60 yards after taking the kickoff after the first Savage touchdown. He took the ball deep in his own territory, fumbled it momentarily, then zipped through the would-be tacklers and headed down the sidelines. Just as he appeared to be headed for the end zone, an Enterprise tackler made a shoestring

diver and tripped him on the 28. The Mustangs advanced from there to the 8-yard stripe before they were stalled.

Gathering their horsepower at this point, Enterprise started a sustained drive that resulted in another seven points for them.

Feature of the drive was a lateral-forward pass play that saw one pass going across almost the width of the field and then a long forward that was caught deep in Heppner territory. They punched out yardage to bring the ball to the one-yard line where Jody Williamson cracked over. The pass to End Jerry Batley was good for the extra point, and halftime score stood 14-0 for the visitors.

Blocked punts—three of them—plagued the Mustangs in the second half, and Padberg was the victim each time. At least one, though, came partly because of a high pass from center. Another was not really blocked since the ball sailed off Padberg's foot with a low trajectory and hit one of his own teammates in the back of the head. However, the Savages poured back on Padberg and didn't give him much time to get the boots away.

The first punt was blocked on the Heppner 20. Sam Marks rolled for 12 for Enterprise and John Butner picked up six more to take it to the Heppner 2-yard line. Here the worth of big John Porter of Heppner, a defensive standout through the game, was very noticeable. He was responsible for a couple of nice stops that not only held the Savages but pushed them back. However, on fourth down, the Enterprise squad went to the air and Batley grabbed a pass in the end zone for the last touchdown of the game. The point try was no good.

Heppner was handicapped by lack of offensive drive but the Mustangs looked strong on defense. At the start of the game it looked as if their offense would be clicking and LeRoy Gardner rambled on end sweeps to give the home eleven two quick first downs, but it bogged down later in the contest.

Coach Jim Sutherland said that the greatest weakness apparent to him was that the boys were missing their blocks.

"Our downfield blocking was pretty bad," he said. He cited John Porter for his excellent play on defense despite an injury in practice that had made

his appearance in the game uncertain.

"Gardner ran well and Dick Springer did a real job on defense," he said.

If the result of the game was disappointing, the size of the crowd wasn't. There were perhaps 500 on hand for the first game, one of the largest of recent years. Lowell Gribble, assisted by Fred Gimbel, handled the public address system and added to the enjoyment.

Principal Gordon Pratt and the coaches attributed support of merchants in advertising and publicizing the game for helping attract the large crowd.



## HUNTERS!

Be Protected

**On Your Hunting Trip  
With Our Broad Form  
INSURANCE POLICY**

For  
Accidents, Sickness  
And Loss of Personal Effects

SEE US NOW

## C. A. Ruggles

Heppner INSURANCE AGENCY Ph. 676-9625

## Tough new '63 Chevrolet Trucks are here!

...THE ONES THAT WHIPPED THE BAJA RUN...TOUGHEST UNDER THE SUN...  
TO SHOW THE WORTH OF NEW ENGINES, FRAMES AND SUSPENSIONS!



Sometimes the caravan crept along for hours in low gear. It took 17 days to go 1,066 miles! This is the road near Loreto.



Round trip from Detroit to the end of the Baja Peninsula is over 8,000 miles.

Millions of years ago nature fashioned a proving ground for trucks that man can never duplicate. Today it is known as the Baja (bah' hab) California Peninsula, Mexico.

These pictures give you only a bare idea of the place. The road is fine for 140 miles below the U.S. border. Then the beating begins. Rocks and hard-baked ruts bang, jab and jerk the trucks from stem to stern. Loose sand makes them struggle and strain. Dust chokes them. Heat roasts them. Rivers drench them.

The Baja Run took this Chevrolet truck caravan 17 days to go the 1,066 miles.

All the trucks performed magnificently. Not one was forced to drop out because of mechanical difficulty.

Trucks that can take this kind of beating can take on your toughest truck jobs. Come in now and see tough quality-built '63 Chevrolet trucks with all their new improvements.

**CHEVROLET**  
QUALITY TRUCKS COST LESS

See the "New Reliables" now at your Chevrolet dealer's!

## FULLETON CHEVROLET COMPANY

May & Main St. Phone 676-9921 Heppner



## HUNTERS' HEADQUARTERS



GOOD SELECTION OF

# RIFLES SHOTGUNS

GOOD STOCK OF SCOPES, CLEANING KITS, GUN OIL, AND ALL HUNTER'S SUPPLIES.



SHELLS ALL GAUGES

USED GUNS  
RIFLES—SHOTGUNS  
FOR SALE



GILLIAM & BISBEE  
HDWE. CO.

106 E. May Phone 676-9433