

Friday is Moving Day at New Lone High School

HEPPNER GAZETTE-TIMES

Heppner, Oregon, Thursday, December 21, 1961

Job Is Done Earlier Than Scheduled

Students of Lone High school will move into their brand new \$110,000 high school building Friday afternoon, but they will have little chance to enjoy its facilities until January 2 when they return to school after the vacation period.

Moving time is scheduled for 10 a. m. Friday, Principal Darrel Reich said. A school party and gift exchange will follow, and then the students will be dismissed for the holidays.

The new structure, which is separated from the present gym by a corridor, is composed of four classrooms, library, science room, office and rest rooms. It was built by Eastern Oregon Construction Company and was finished somewhat ahead of schedule. Original completion date was set at December 28.

Last work to be done this week was installation of glass in doors and other places about the building.

The move will mean that high school and grade school students, who formerly occupied the same building will be separated for the first time, except that they will share the lunch room, on the opposite end of the gymnasium from the new building, and the music room.

While the high school students are moving to the new building, the grade school students will move up from the basement of the old building into the rooms formerly occupied by the high school. Don Clark is principal of the grade school.

Modern in every respect, the new structure incorporates the latest in lighting and other facilities. Dedication program at the school is set for 8 p. m., Monday, January 15.

Weatherford Offers Plan for Fair Funds

Rep. Frank Weatherford, reporting on his work at two legislative interim sub-committee meetings in Salem recently, said that he is planning to propose legislation that will help some counties, including Morrow, retain revenue from pari-mutuel betting funds that might otherwise be lost under another proposal now under consideration.

"The sub-committee on county fairs had the problem of making a study of the pari-mutuel money derived from racing and its distribution according to law," the representative said. "Splinter groups such as potato shows, poultry shows and minor rodeo groups have splintered off by legislation some of the money that was previously allocated out of pari-mutuel funds to the fairs and 4-H clubs, thus greatly reducing the money available to county fairs.

"There is a great likelihood that in the next session there will be strong pressure exerted to try to put all pari-mutuel funds in the general fund and have them disbursed by percentage of attendance," he continued. "This would adversely affect Morrow county in as much as Multnomah and other larger counties would take the lion's share with much of the remainder going to the state fair."

The representative from the 22nd district stated he had an alternative proposal which he felt would be a more fair distribution. "I am proposing that a minimum standard of money received from pari-mutuel funds be established for each county fair, and the county be rewarded with additional funds for the quality of its fair and the good it does towards promoting agriculture and 4-H in that particular county," he declared. "I will make this recommendation to the full interim committee on agriculture to stabilize and equalize the money and also I will recommend to repeal all splinter groups not originally mentioned in creation of the distribution of pari-mutuel funds."

Meat Inspection Explained
"Public misunderstandings" regarding the state meat inspection program were discussed by Rep. Weatherford in his report on the sub-committee meeting on meat inspection. He said costs were popularly believed to be too high and unequal among those being inspected. The truth is according to the representative, the cost is equitable depending on the ability of the packer to handle his meat expeditiously and to process it quickly.

To the charge that small packers cannot supply state institutions with meat, he said that "the truth is, meat bought by the state must be purchased by bids, by specification, and be federal grade."

He explained a federal grader must witness the meat being packed and graded.

"Any packer may participate in bidding and selling but margin is generally so low and deliveries so intermittent during the month that the small packers usually do not bother bidding."

They also find it difficult to make a profit and pay the federal grader to be on hand for packing and grading when they cannot keep him employed regularly.

(Continued on Page 6)

Saturn Contracts To Cause No Boom On Boeing Site

Boeing will not use the property it is leasing from the state in Morrow county in filling its contract to build the main part of the Saturn rocket, company officials have stated. They added, however, that gaining the contract from the government last week increased the company need for the test site near Boardman.

Boeing's new \$300 million contract is to develop and test 24 main-stage rockets for Saturn, which is designed to launch a manned U. S. space capsule on a mission to the moon. The work will be done 25 miles from New Orleans with approximately 5000 highly skilled technicians of the company moving there for the project from the Seattle and the Wichita plants.

In commenting on the contract, a Boeing official said that although the Boardman property may not be used in the Saturn program, the company's entry into the booster field "reinforces our need for the site."

The State of Oregon recently purchased two pieces of property totalling 12,250 acres to put together the land package for Boeing. Only two major purchases remain to be made, 19,966 acres from the Frank Wilkinson estate and 960 acres from Ira Barnett.

The original agreement between the state and Boeing called for the land to be put to use "within five years of completion of the lease."

Chamber Elects Five Directors

New directors were chosen Monday at the annual election meeting of the Heppner-Morrow County Chamber of Commerce. Serving two year terms will be Ed Gonty, James Myers, Gene Pierce, Harry O'Donnell and Gordon Pratt. Holdover directors are Fred Gimbel, Al Lamb, Earl Ayers, Robert Van Houte and Dr. C. M. Wagner.

Officers for the chamber for 1962 will be appointed by the board members at a meeting later this month.

Morrow Merchants Extend Greetings

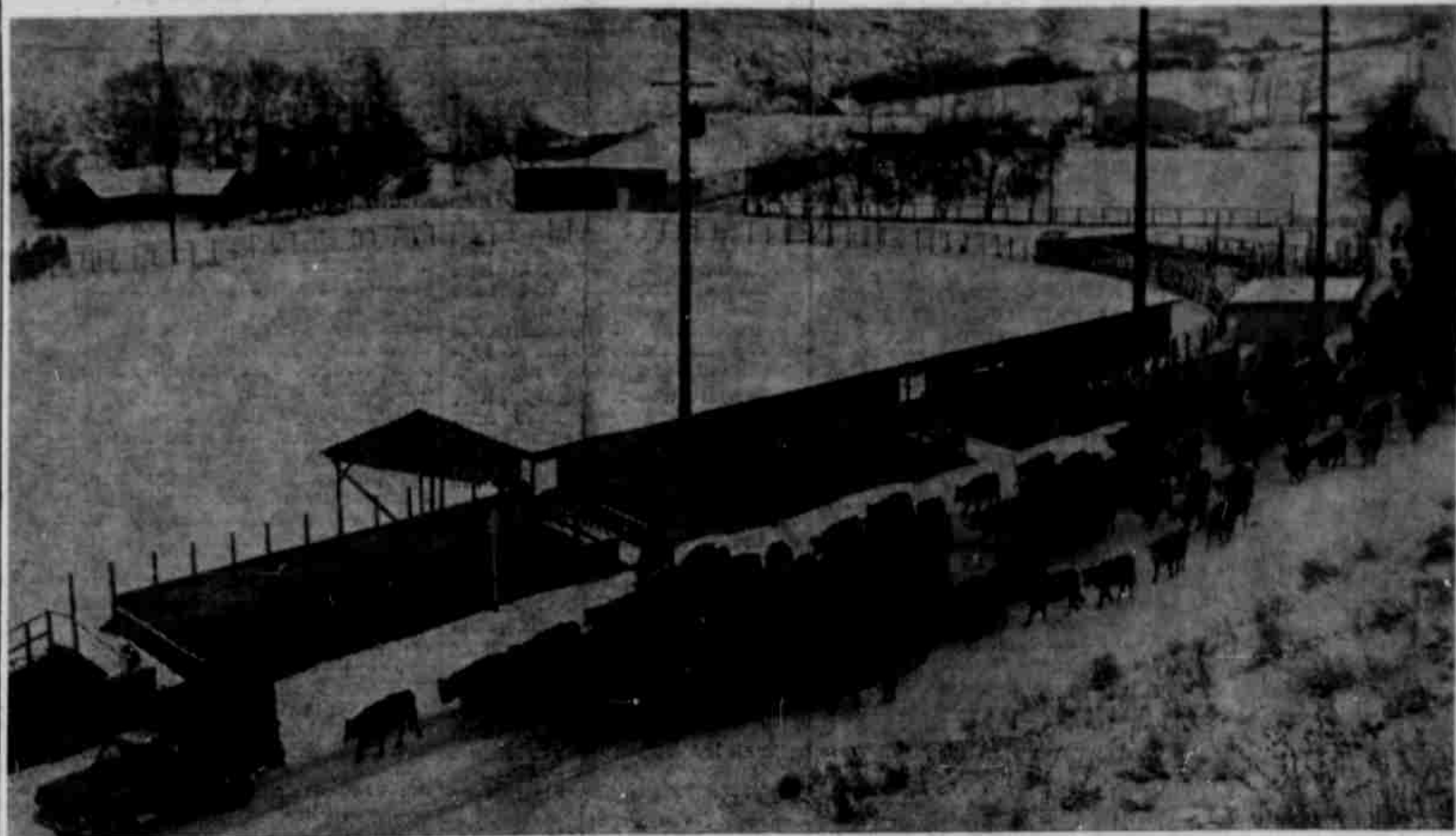
Stores and other businesses of Lexington, Lone and Heppner are extending greetings of the season in this Christmas Greeting edition of the Gazette-Times. Many of them are clustered in section 2, and others may be found throughout the paper.

Each carries the sincere sentiment of the sponsor, and each Gazette-Times reader is invited to consider each greeting as a personal message to him.

Post Office Holds To 6 p. m. Schedule

Mail will be received and distributed at the Heppner post office through this week, including Saturday, until 6:00 p. m. However, there will be complete closure of the office on Sunday, December 24, and on Monday, December 25, according to James Driscoll, postmaster.

Winter Comes and Cattle Move Down From Freezeout



HEADING FOR winter quarters on the Hynd Bros. place at Cecil is this herd of some 650 Herefords which moved through Heppner Friday on the 55-mile drive from the Freezeout area. The drive was making about 10 or 12 miles per day until ice slowed them up and they didn't arrive at the destination at Cecil until Tuesday of this week. The picture shows the herd going past the county fairgrounds as it enters Heppner. Among those working on the drive were Mr. and Mrs. Ewing Hynd, Leo Ledgerwood and Ralph Beamer. They spent the night at the Newt O'Hara place, Lexington, after leaving here. (G-T Photo)

Decoration Contest Deadline Set Friday

There is still time to enter Heppner's holiday decoration contest. Original deadline, which was December 18, has been advanced to Friday, December 22, at 5 p. m. and registrations will remain open until that time at the Gazette-Times office.

The change was made Monday when members of the Heppner-Morrow County Chamber of Commerce decided that they had not given sufficient notice to the public and voted to extend the time of registration.

Three classes are open: 1. Outdoor residential decorations. 2. Indoor residential window decorations. 3. Indoor (window) bus ornaments. Outdoor residential decorations. Outdoor business classes each offer prizes of \$10 first, \$7.50 second and \$5 third. Indoor residential has prizes of \$7.50 first, \$5.00 second and \$2.50 third.

Bill Collins, chairman of the contest, said that the impartial committee of judges will pick up slips Friday at 5 p. m. at the Gazette-Times office and will make the rounds between 5 and 8 o'clock that evening to determine winners.

Prize money of \$60 is given by an anonymous local donor. Everyone is encouraged to enter, and by doing so, each will not only have a chance to win a prize but will also contribute to the beauty of the community during the holiday season.

Among those entered so far are Opal and Larry Cook, Mr. and Mrs. Ray Williamson, Case Furniture, Lois Winchester, Farra Shoe Shop, Minnie McFerrin, Glen Ward, Alice Lettrell, and Elma's Apparel.

For those who find it inconvenient to come to the newspaper office, a telephone call (6-9228) will suffice.

Schools to Dismiss

Morrow county schools will be dismissed at 2 p. m., Friday for the Christmas and New Year's vacation period, Supt. Robert Van Houte said Wednesday.

Vacation will extend through January 1 and school will take up again on the morning of January 2.

Believe it or Not, Grass Fire Calls Crew

Believe it or not: A grass fire called out the fire department at 2:25 Wednesday afternoon to the Steve Thompson place about two miles up Willow creek. Approximately 40 acres of pasture land was burning when Fire Chief C. A. Ruggles and six men arrived.

Ruggles said the fire was on too steep land to use wheeled equipment and the flames had to be extinguished with pack sacks. The seven firemen were occupied about one hour in putting out the fire in the high wind which was blowing at the time.

No buildings were in the area and the fire was reported by neighbors. Origin of the fire was not determined.

Chief Ruggles warned that although the ground is wet, cheat grass, found extensively throughout the area, will burn "after the wind blows on it awhile" and that caution should still be used with matches and cigarettes.

Employees Give \$600 To Bereaved Family

Fellow workmen of Robert F. Campbell, 55, who died December 6 in a Richland, Wn., hospital, have given more than \$600 in a collection for the widow, Mrs. Ellen Campbell of Heppner, and family.

Campbell, a resident of Heppner for 24 years, was employed by Kinzua Corporation as a logger. The contributions given in his memory came from employees of the company in the mill and woods crews and from friends.

County Chairmen Announce Reports Of Sale Returns

Results of Christmas seal sales are coming in slowly, according to Mrs. L. E. Dick, Morrow county chairman, with a total of \$938.20 reported to date. Residents of the county are urged to send in contributions for the seals into the association by the first of the year in order that work can be continued in fighting TB and in carrying on the county's health program. Many do not realize that 74% of seal contributions stays in this county for work which is done here, as well as use in providing scholarships for young people.

The Morrow County TB and Health Association has bought the X-ray equipment used in making the monthly check X-rays at the hospital, which are free of charge to county residents, but which cost the association \$1.50 each, paid to the hospital, plus a fee paid to the technician who reads each film. Several hundred X-rays are made each year.

The association also furnishes material for skin tests made in the schools, for health education materials, and for other county health projects.

Heppner chairman, Mrs. Harry O'Donnell, assisted by Mrs. Annie Healy, report \$513 received; Mrs. Garry Tullis, Lone chairman, reports \$200; Mrs. Gene Orwick, Lexington chairman, reports \$80 (as of two weeks ago); Mrs. Ruth Coy, assisted by student chairman, Sandie Thorpe, Boardman, report \$76; and Mrs. Coy, assisted by student chairman, Susan Coy, Irrigon, reports \$69.20.

Ullman Will Run Despite Injuries

Rep. Al Ullman announced Tuesday he will run for re-election to Congress next year, despite the fact that he lost his left leg just below the knee in an accident December 9. The accident will not interfere with his congressional responsibilities nor with his intent to run, he said.

The congressman is recuperating in Bethesda Naval Hospital in Washington, D. C. Within two or three weeks he expects to be released from the hospital walking on crutches, and will later be fitted with an artificial limb.

For the past several years Rep. Ullman has managed to be in this area hunting with local persons part of each elk season. He does not expect his injury to curtail that activity, according to his statement in Washington Tuesday.

"My hunting and fishing days aren't over," he said.

His condition is good enough that he is able to work on papers delivered from his office while he is in the hospital.

Mrs. Ullman was expected to be released from Winchester Va., hospital Wednesday to return to the couple's Arlington, Va. home. She suffered a fractured vertebra in the accident and has been in a body cast.

WEATHER

(Leonard Gilliam, Observer)

	Hi	Low	Prec.
Friday	25	19	.04
Saturday	39	23	.06
Sunday	46	33	.07
Monday	43	33	—
Tuesday	51	37	.12
Wednesday	54	39	.06
Thursday	58	35	.20

A total of .55 of an inch of rain fell this week.

State's New First Family of Higher Education



THE ROY E. LIEUALLEN family, Oregon's new "first family" in higher education, posed for this picture shortly after Dr. Lieuallen was named Chancellor of the State System of Higher Education last week (Dec. 12). A native Oregonian who graduated from Lone High school in 1933, Dr. Lieuallen is the sixth chancellor to head Oregon's coordinated state college system since it was established in 1932. He was president of Oregon College of Education for the past six years. Mrs. Lieuallen is the former Barbara Wales of Klamath Falls. The children from left are: Douglas William, Barbara Ennis, Margaret Arnita, and Scott Elwayne.

Judge Discusses Road, Serial Levy

County Judge Oscar Peterson, noting a recent proposal that the county serial road levy be reduced and that equivalent funds be used for school construction purposes, has written an article discussing the background on the road levy, how it has been used, and what he believes will be needed in the future.

In submitting the article, he said that he is concerned about roads in the county that are unimproved.

The article follows: In an article in last week's Gazette-Times, headed "Board to Check Cost of School Addition," it was stated someone had made the suggestion that the county might be persuaded to take off a serial levy now used for roads and use it for needed schools. Also, "that right now it looks like we can't operate without the schools but we can without the road tax." Further, that the serial levy on roads had produced more revenue than was intended when it was initiated and said that funds from other sources would suffice for the county for roads for a number

of years. Now before we go too far in such assertions, let's check what the serial levy actually brings in and what road funds from other sources are.

The serial levy, 10 mills, has been for three five-year periods, each time approved by the vote of the people. It has been on an approximate \$13 million dollar assessed valuation up until this year, when it is on a valuation of approximately \$17 million dollars. This change in valuation is due to a change from a 21% ratio to a 25% ratio, as made compulsory by state law. We have one more year to go on the third period and the 10 mills will be for a second time on the higher valuation, after which it will be up to the vote of the people again. Thus, for 13 years, the levy of 10 mills has been on a valuation of around \$13 million dollars while for the last two years, it will be on the higher valuation of, say \$17 million dollars. It is easy to figure what revenue this should bring in, but it never brings exactly what the millage says it should. And certainly not during this past year.

We again expect to ask for the special levy, but not 10 mills. Possibly something in the neighborhood of from 5 to 8 mills. Here, as said, it will be up to the vote of the people in the next general election.

Now what other funds are there, or other sources, as it was put? For the year 1960-1961, this was it: Forest rental, \$21,295.28, sales and rentals, \$2,990.53, gas refund, \$3,329.58, sale of public land, \$6,061.14, justice court fines, \$129.00, in lieu of taxes, \$53.54, trailer license, \$94.80, motor license fund, \$44,554.11. Total, \$98,902.42.

Some of these fluctuate and must say the forest rental fund \$21,295.28 is the largest we have ever had. Will not reach that this year. Also the sale of public lands will be less. We might add here that 50% of funds received from the special road levy, levied within incorporated cities, is spent within the cities.

How justifiable is all this road expense? No one can say that we have gotten 100% of value

(Continued on Page 6)