

Ione Trim, Peaceful, Fine Town for Homes

Ione, approximately half way between the Columbia River and the foothills of the Blue Mountains, is served by Highway 71, which joins Highway 30 at Heppner Junction, and continues 29 miles up Willow Creek between rust-colored basaltic cliffs which widen out into emerald green alfalfa fields sub-irrigated by gravity flow of water from Willow Creek and its tributaries and from underground springs.

Wheat lands roll away to the benchlands on either side of the highway. The ranches with their wheat, barley, cattle, sheep and related activities provide much income and employment for the community.

Wheat shipping is via Union Pacific railroad and truck through the facilities of five elevators within the immediate area with a one and a quarter million bushel capacity.

The town of Ione, population 350, has an altitude of 1090 feet with a pleasant semi-arid climate, the rainfall averaging from eight to 12 inches. Nearly always mild winters prevail, with travel possible the year around.

Ione is situated on level ground which eliminates costly leveling and filling. There is a vast area both to the east and west made up of small farms and homes, which could be utilized for housing and industrial development.

The Boardman Space Age Park is 10 miles north of Ione. At present all downtown commercial buildings of any worth are utilized. However, there are three existing buildings, which have served their usefulness, occupying valuable sites. There are several lots vacant and available at this time.

We have approximately one mile of railroad frontage of which about 1800 feet is in use. The north side of the tracks offer more room for expansion as there is only one spur in use there.

Water and power facilities are adequate and a natural gas line runs through the city. A non-profit community owned television system serves the city and nearby homes from an antenna on a hill. The three stations available are KGW, KOIN-TV of Portland and KEPR-TV of Pasco.

The following businesses are now operating:
U. S. post office
Railroad freight depot
Insurance agencies (2)
Grocery and variety stores (3)
Trucking service
Farm machinery and equipment

Fertilizer distributor
Restaurant and cocktail lounge
Bank of Eastern Oregon
Hardware store
Service stations (2)
Beauty shop
Electrician
Grain elevators (2)
Petroleum products jobber
Auto repair shop
Bar
Apartment houses (2)
Barber shop
Well drilling company
Pest control service
Lumber and building supply

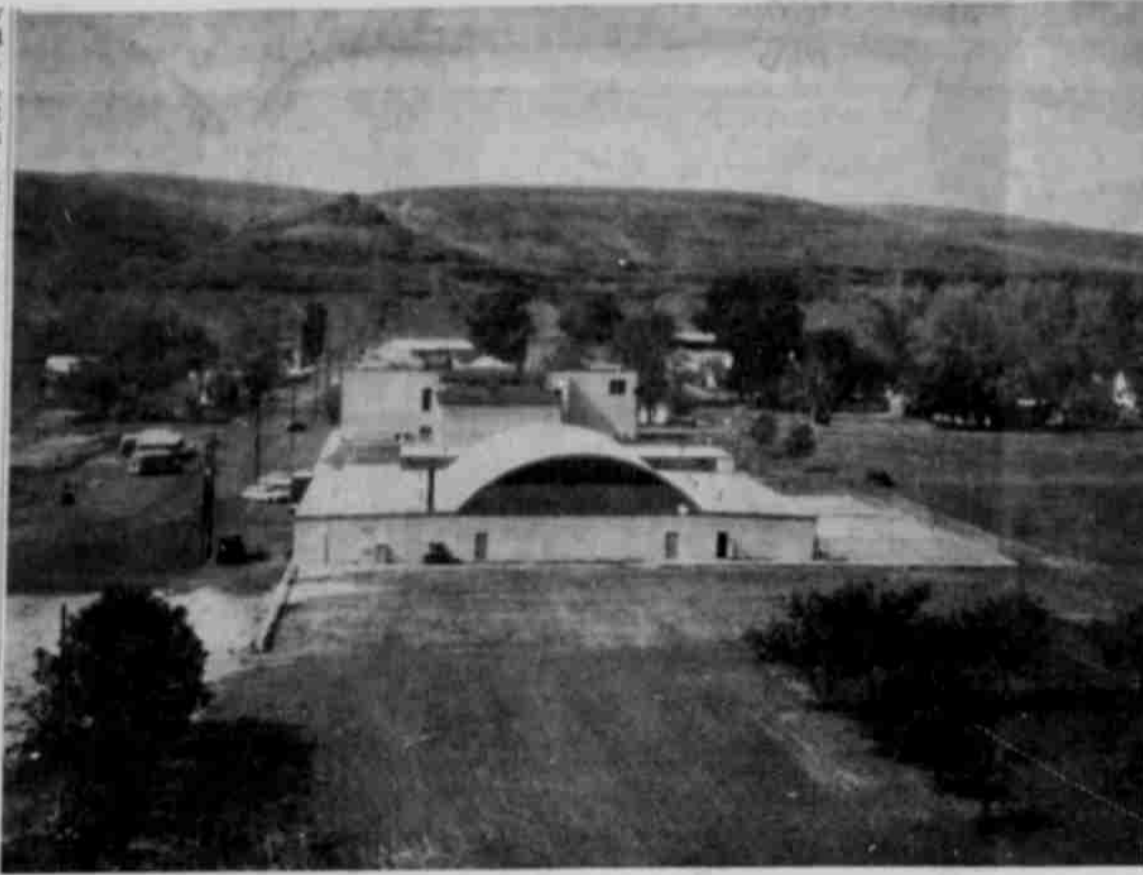
Two churches serve the needs of the community: St. William's Catholic Church on Main Street built in 1945 with an active altar society and the Ione Community church, which embraces members of many denominational backgrounds. The church building was erected in 1914. The Maranatha Club, Naomi Circle, the Thirteeners, and the Pilgrim Fellowship groups are all organizations of the Community church, which is a member of the United Church of Christ. The Valby Lutheran church, located in the center of a farming area 20 minutes drive south of Ione, recently celebrated their seventy-fifth anniversary.

To most small communities, the school is the focal point of most interests and activities. In this respect Ione is no exception. Ione has an eight-teacher elementary school of approximately 150 students and a six-teacher high school of 60 students.

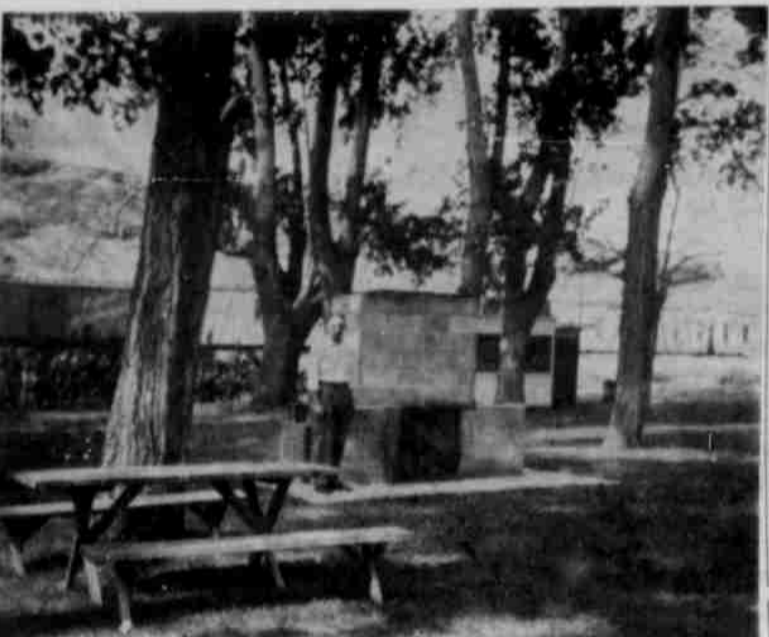
Much effort and concern has been given to the building of a strong, comprehensive curriculum from grades 1 through 12. Students in high school have an opportunity to enroll in classes teaching physics, chemistry, algebra I and II, trigonometry, geometry, a number of foreign languages, as well as many other classes in English, social science, etc.

Ione students have a much greater opportunity than those in larger school to participate in many activities. All students may participate in band, chorus, student government, dramatics, publications, committee activities and athletics.

Regional and state recognition has been gained by our students



HIGH SCHOOL at Ione and part of the city present a Utopian appearance in this photo taken from a nearby hillside. The community has taken a great pride in the school and its grounds and volunteers joined to level and develop the turf athletic field partially visible at the right. State champion athletic teams and top students have come from this school. (G-T Photo)



A COOL and popular spot on warm days is the Ione City Park located on land owned years ago by Joseph A. Woolery. His widow, now Mrs. Helen Knappenberg of Portland, presented deed to the property for the park. The park is maintained by the Ione Garden club, and a bronze plaque in memory of Mr. Woolery was placed on the property by Willows Grange with Oscar Lundell in charge of the work. Picnic tables and fireplaces are part of the facilities of the well-kept park. (G-T Photo)



ONE OF THE fine ranch homes in the Ione area is this one just south of town, the home of Mr. and Mrs. Garland Swanson and family, located in a picturesque setting between rolling hills. (G-T Photo)

In some of the activities, graduates of the Ione schools are prepared to be active, intelligent members of any community.

NEW FRIENDS ALWAYS WELCOME AT

OMAR RIETMANN

Oliver Farm Machinery
Hardware
Pumps And Appliances
IONE, OREGON

THIS BUSINESS HAS OPERATED CONTINUOUSLY FOR 65 YEARS

The people of Ione enjoy an active social life and there are numerous social clubs and fraternal orders. Among these are the Masonic orders, A.F.&A.M. No. 120 and Locust Chapter No. 119 meet twice a month in their hall on East Main. The hall has recently been attractively redecorated in mahogany paneling. The Social Club of the OES meets once a month. An assembly of International Rainbow for Girls has recently been organized.

The I.O.O.F. lodge occupies a comfortable hall on lower Main Street, which is shared by the Rebekahs. There is also an active Three Links club.

Willows Grange meets on the third Saturday of the month at their hall on the lower end of Main street. There are 120 members and their chief interest is agriculture. The fund raising group is the Home Economics club for women which meets once a month. There is also a Community Service club.

The Amica Club is a social and civic organization of women which meets once a month at the home of members.

Beta Omega chapter of Epsilon Sigma Alpha is a community service organization. One of their many outstanding community-improvement projects was the spearheading of the fund drive and contributing the labor for piping water to our cemetery. Meetings are held at members' homes on the first and third Wednesday evenings of each month.

Ione Parent-Teacher Association is most active. Meetings are held in the school building on the second Wednesday of each month in the evening.

American Legion Post No. 95 meets in their own building on Second Street on the second and fourth Thursday evenings of each month. Their building is well equipped with complete kitchen facilities and a floor for dancing.

The American Legion Auxiliary hold their business meeting on the first Tuesday afternoon and their social meeting on the third Tuesday evening.

The Ione Garden Club is an active civic group affiliated with the Oregon Federation of Garden Clubs which is a member of the

National Council of State Garden Clubs. They meet on the second Tuesday afternoon of each month.

Ione International is the most recently organized service organization. They hold dinner meetings on the second and fourth Monday evenings of each month at Stefani's.

The Ione Topic Club was organized in 1930 by eight women. The membership is limited to 24. During these years many projects have been carried out, the most important of which is the establishment and maintenance of the Ione Public Library. Meetings are held at members' homes on the second Friday afternoon of each month. These meetings are devoted to study of a wide range of subjects.

The Ione Public Library is located in the Ione City Hall. This building, constructed in 1952, is located on Second street. The library, destroyed by fire in 1949 contains 4,900 volumes purchased by the Ione Topic Club or donated by members and friends. Mrs. Elmer Griffith is librarian and Mrs. Vester Hams is assistant. The library is open on Monday and Thursday afternoons from 3 to 5 and on Wednesday morning from 10:30 to 12:00.

Ione has a well-kept shaded city park with a fireplace and complete picnic facilities. The outdoor facilities of the Ione Public School are available to the public for recreational purposes.

Two tennis courts are used for tennis and roller skating, and have been flooded and used for ice skating in the winter.

The children may use the play equipment on the grounds. Two large baseball fields are available. All of the playground is covered by turf.

Ione takes special pride in its swimming pool which is operated during the summer months by a qualified lifeguard. The pool hours are 2 to 5 and 7 to 9 p.m. The water is heated to a temperature range of 82 to 84 degrees Fahrenheit. Lessons are given mornings during a two weeks' period. Adjacent to the swimming pool is a wading pool. The entire play area is free of traffic problems.

You'll Enjoy The



Morrow County Fair

IN IRRIGON
Complete Food Store
- CHRIS and MARGE -
WELCOMES YOU
Meats - Produce - Drugs
Notions - School Supplies

OPEN 7 DAYS - WEEK DAYS 7:30 To 8:00
SUNDAYS 8:00 To 8:00
CLOSE TO BOAT DOCKS AND FISHING

Sound Banking is A Matter of Balance!

BANK BY MAIL

SAFE DEPOSIT BOXES

Regardless of the "amount" of your bank balance, you'll appreciate the wide range of services which offer our customers "balanced banking."

First National Bank offers more than a place to deposit or borrow money. At First National, you'll find facilities for every kind of financial service—from travelers' checks and money orders to collections, trust services and investment management.

Ask at your Heppner Branch for a folder describing the many services offered by First National Bank of Oregon—the modern bank that puts your interests First!

Heppner Branch

FIRST

NATIONAL BANK OF OREGON

Heppner, Oregon

SERVICING THE CITIZENS OF THIS AREA FOR THE PAST "26" YEARS

AUTO LOANS

IMPROVEMENT LOANS

CHECKING ACCOUNTS

TRAVELERS CHECKS

TRUST FUNDS