

Schools Under Administrative District

On July 1, 1959, all of Morrow county was organized into a single administrative school district, with one school board, and one school staff. The staff consists of 75 teachers who teach about 1200 students.

This Eastern Oregon county, famous for wheat and livestock, is expected to enter an era of

industrial growth, especially in the area bordering on the Columbia river. State officials predict tremendous growth in the near future, with new schools and additional students.

This school district is under the control of a progressive modern school board elected from seven areas of the county. Their

goal is a system of education to meet all the needs of today's children including classes for the gifted and the retarded, a class load of not over 25 to 30 in the actual classrooms.

A progressive salary schedule with provisions for those who wish to take advance work in college or university is being de-

veloped. All our teachers are members of the Oregon Education Association and the National Education Association.

The following schools now operate in this district:

Irrigon—8 teacher elementary school, 120 students.

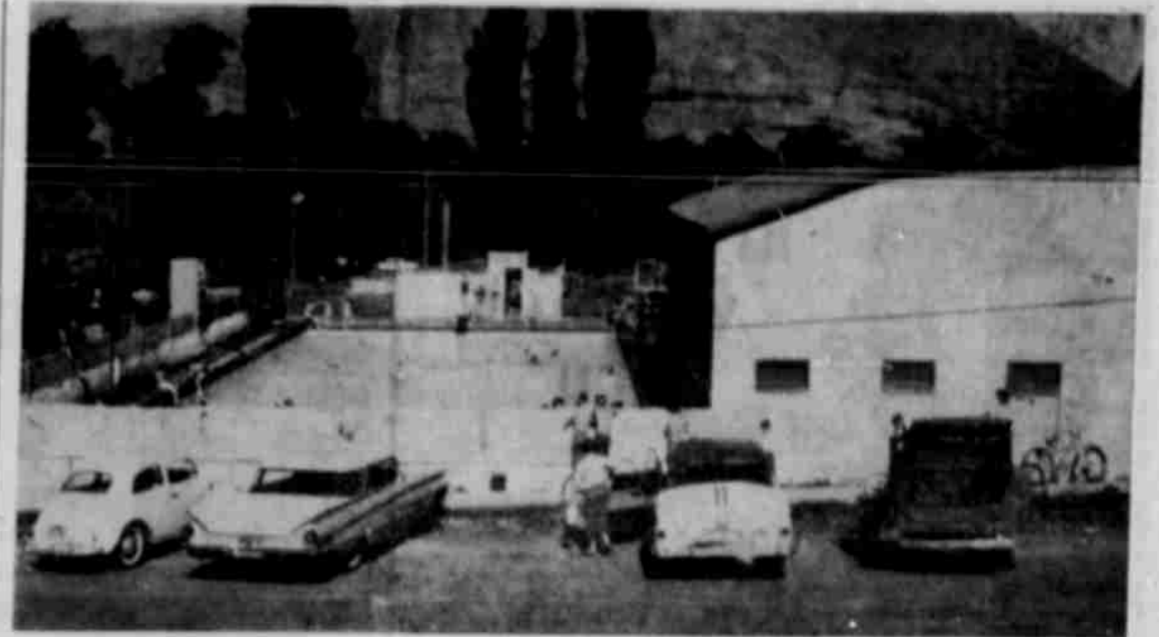
Boardman—4 teacher elementary school, 80 students; Riverside high at Boardman, 8 teachers, 85 students. It serves both Irrigon and Boardman.

Ione—8 teacher elementary school, 140 students; 6 teacher high school, 60 students.

Heppner—20 teacher elementary school; 440 students; and 16 teacher high school, 220 high school students.

The school district has a building program in progress which will bring added facilities throughout the county. In 1961 a new 8 room unit for Heppner high school will be completed. By January of 1962 a 6 room high school unit will be completed at Ione. New elementary rooms are to be added in Irrigon during 1962-63, and a complete new facility will be built at Boardman during 1963 to replace the Riverside high school and Boardman grade school, with an estimated expenditure of around \$700,000.

Every school has a hot lunch program; every school has secretarial help available; 50 per cent of the students are trans-



ENJOYED by hundreds of youngsters, particularly, is the Heppner municipal swimming pool. A low family rate for the summer season makes it available to all. Swimming instruction is also given, and close supervision of the pool is supplied by a qualified lifeguard. (G-T Photo)



UNDER CONSTRUCTION on a site northwest of Heppner is this 8-room unit of a new school building. Designed for a high school building, it will be used at least for the first year as a grade school building. Before it may be used for high school purposes, science rooms, home economics room, library, multi-purpose room and additional classrooms need to be approved and constructed. The first unit is expected to be in use during the 1961-62 school year. (G-T Photo)

HICKS MARKET



WELCOMES YOU

Complete Line of Groceries

FROZEN FOODS - PRODUCE

WHEN IN IONE.
DROP IN AND SEE US!



HEPPNER HIGH school serves students of both Lexington and Heppner and has a student body of approximately 200. The building has 16 classrooms and is built on two floors with a basement below. In 1961-62, 16 teachers will be on the staff. It offers all subjects needed for college preparatory courses and has some vocational courses, including agriculture and home economics. Visible at right is the gym. An ag building is also a part of the plant. (G-T Photo)



THIS MODERN grade school building, which serves both Heppner and Lexington elementary school children, was completed in 1954 at Heppner. It has 10 rooms and is built on two levels. Upper grade children from Lexington have been attending here but those in grades 1-5 have continued at school in Lexington. (G-T Photo)

WE WELCOME YOU!
RED and WHITE GROCERY

Mr. and Mrs. Roy Quackenbush

HEPPNER

Ph. 6-9226

Meats - Groceries - Produce
Frozen Foods

from one season
to another

A Cordial Greeting and
Always A Good
SELECTION OF LATEST
FASHIONS

- Dresses
- Skirts
- Blouses
- Shorts
- Capris
- Slips

MiLadies

ALICE and GRACE

HEPPNER

WESTERN AUTO ASSOCIATE STORE



AT
HEPPNER.
OREGON
PH. 6-9234

'Where You Expect More
For Your Money
And Get It!'

Owned And Operated By
JOHN and BETTY PFEIFFER

Welcome To
EASTERN OREGON!

WELCOME FROM MORROW COUNTY CREAMERY

— Oregon's Only Remaining Independent Creamery —
MAKERS OF

PRIDE of OREGON ICE CREAM and BUTTER

46 YEARS IN BUSINESS



- Thousands of Satisfied Customers
- Thousands of Satisfied Patrons From Whom We Have Bought Cream and Butterfat

IF YOU WANT THE BEST,
YOU WANT PRIDE OF OREGON!
ASK FOR IT!

WHOLESALEERS FOR FINE KRAFT PRODUCTS AND TILLAMOOK CHEESES

W. C. and CLARA COX, Owners

PH. 6-9244

HEPPNER