

Heppner Gazette Times

MORROW COUNTY'S NEWSPAPER
The Heppner Gazette, established March 30, 1885. The Heppner Times established November 18, 1897. Consolidated February 15, 1912



ROBERT PENLAND
Editor and Publisher
GRETCHEN PENLAND
Associate Publisher



Published Every Thursday and Entered at the Post Office at Heppner, Oregon, as Second Class Matter
Subscription Rates: Morrow and Grant Counties, \$3.00 Year; Elsewhere \$4.00 Year. Single Copy 10 Cents.

"Thou Shalt Not Kill..."

We can think of no more tragic memory to haunt what should be the happiest season of the year than traffic deaths and accidents during Christmas. Christmas is a time to remember... the smiling, anticipating faces of children, the gayly lighted trees and decorations, jovial Santas, the echo of music, the hustle and bustle of shoppers and the good will of mankind.

Christmas ushered in a new era for mankind, a new way of life. The greatest gift that ever came to man came on Christmas. A little babe wrapped in swaddling clothes and lying in a manger calls us to remember the Commandment: "Thou Shalt Not Kill." We have not done so. We have made the Christmas holidays and spirit an enterprise so selfish as to turn this festive occasion into one of carnage.

What a Christmas it must have been for the families and loved ones of more than 600 traffic victims during each of the last two Christmas seasons.

This is a sadistic sacrifice on the altar of speed and greed. The record shows that excessive speed and drinking were the two greatest influences on the Christmas holiday toll. Many did not stop to remember to stop and think.

On Christmas alone in Oregon last year—from 6 p.m. the night before until midnight the day of the holiday—192 accidents took five lives and injured 69 more, according to Department of Motor Vehicle figures. December has proven to be the worst month of the year for traffic accidents in Oregon. Over the last five years, an average of nearly 7100 accidents per December have resulted in an average of 41 deaths, one of the worst times of the year.

Don't let a traffic accident blacken your Christmas. Take time to count your blessings and to give a hand to others. Take time to give courtesy consideration and kindness. Spreading Christmas cheer it's called, but you get it back a hundred-fold.

Make this a safer, merrier and happier Christmas.

From The County Agent's Office

By N. C. Anderson

This is the last call for beef and dairy cattle owners to register to be eligible to vote on the proposed Oregon Beef Commission. Registrations close on Tuesday, Dec. 24. Only those who have registered by that date can vote when the referendum is called. In Morrow county registrations have been very small with less than a fourth of the eligible producers registering. Whether you decide to vote for or against the Beef Commission makes no difference, but register!

Mrs. R. A. Thompson, Heppner, is looking to the future. Mrs. Thompson this past month ordered 2,000 Ponderosa pine seedlings for the Oregon State forestry nursery. They were planted in wet spots and waste land on her property in the mountain foothills. Mrs. Thompson believes that this land might as well be growing something. While it will be a number of years before there will be timber to harvest, there might as well be something growing as time goes on. There is a lot of such land in southern Morrow county which could produce timber for future cutting.

The American farmer pays about two billion dollars a year for the privilege of sheltering and feeding rats on his farm. The two million bushels of grain they destroy each year would bake 12½ billion loaves of bread or 317 loaves for each household in the United States. As winter approaches rats are looking for a place to spend the cold months with a handy food supply. Now is the time to be baiting rats before losses occur. Most popular of rat baits is Warfarin. It comes pre-mixed or as a concentrate for making your own mix. Warfarin is available in Morrow county at all places handling chemicals and insecticides.

A female rat can bear young at the age of 3 months. The gestation period is about 4 weeks, litters range from 4 to 10. The average female bears about 4 to 6 litters a year—if conditions are right, 8 to 10 litters a year. Now is the time to bait rats with warfarin as they move into farm buildings for winter protection.

Several farm and townspeople have picked up two health items in our office which they felt have been very helpful to them. These two items are a booklet entitled "Your Family Health Record" which provides a place basic health facts of your family—for school records, for insurance forms, for a doctor's medical history. A small bill fold card containing personal health information is also available.

Recently Oregon State college released plans for six different types of beef cattle corrals. The detailed drawings and descriptions including gates, loading ramps, chutes and head gate. Released at the same time was plans for a three way sheep cutting gate. These plans are available at this office for the asking.

From a recent production, price and cost review report from Oregon State college we find that Oregon farm land values have again hit a peak. They have gone up almost constantly in the past three years. Current values in this state average 7% over a year ago

THIRTY YEARS AGO

from the files of the Gazette Times, Dec. 22, 1927

With the affairs of the bank in as good shape as possible, the Lexington State Bank of Lexington closed its doors voluntarily Monday after setting aside enough assets to pay 80 percent of its deposits, according to R. L. Elliott, representative of the state banking department, in charge.

A. F. Majeske is well pleased with conditions where he farms in the Clarks canyon district, this fall.

The following girls turned out Friday for basketball practice at Heppner high school: Alva McDuffee, Rosella Doherty, Ann McDaid, Hazel McDaid, Louise Langdon, Erma Schulz, Mary Beamer, Katherine Bisbee, Janie Allsott, Margaret Becket, Evelyn Swindig, Velton Owen, Janet Turner, Harriet Morgan, Zella McFerrin, Mildred Green, Francis White and Winifred Thomson.

Sam Devine, father of Joe Devine and Mrs. George White, is here for a visit with his people.

Showing at the Star Theater Thursday and Friday, Tom Mix and Tony in "No Man's Gold".

resents a decrease of 5,500 farms in the past five years, and is 8,500 fewer than the peak number counted in 1935.

There are only two more weeks left of this year and farmers will need to start a new set of records for the new year. Quite a number of farmers are using the Oregon State college farm account books. These books are again available at cost at the office. Some have been picking them up lately, better get your copy now.

Even though it is hard to believe that it is Christmas time



'58 Campaign is On

When the politician with the quiet voice commences to have quite a voice—you can say the campaign is on.

When Lew Wallace came out last week for the Democratic nomination for governor that settled it for the Democrats—as to candidates. There will be no others if party potentates can block their attempts.

It has to be Holmes or Wallace now. Friends of both candidates realize that the potentials of a third candidate in the primaries would leave a party split in the general election.

There are conditions when a political party can stand a two-way split but not a three-way breach, particularly when one candidate is strong (as Wallace is) in the state's metropolis. This was discovered and used by Tammany more than 100 years ago, whenever they were successful in crossing party lines and getting three or more candidates nominated on the Republican ticket.

Lew Wallace's platform has only nine words: Reduction of taxes, economy in government, keeping campaign promises. He has served in the Legislature during six sessions, one in the House and five in the Senate.

At present it appears there will be a very close race between the

with the excellent weather we are enjoying, we are reminded that this is the last column before Christmas. The county agent's office would like to take this opportunity to wish everyone a very Merry Christmas.

governor and his challenger. Last year Congressman Walter Norblad said he would run for governor, but he didn't. This year he says he won't run for governor. So maybe he will.

Politically Unconfused
Those who know Secretary of State Mark Hatfield best will readily admit he never makes wild guesses or loose statements. All of which makes more remarkable the accuracy of his premonitions concerning the late special session of the legislature which he made on the same day that Governor Holmes announced that he would call it.

On August 23 this year, Secretary Hatfield said the session would last 20 days. It lasted 19 days. He predicted the school support per census child would be raised from \$5 to \$15. It was \$10. He estimated the cost for a 20-day session would be \$110,000. The current estimate is \$100,000, although a total cannot be computed because the printing costs have not been completed.

Pearl Harbor Celebrations
WAVE Mary Ellen Warner, daughter of Justice and Mrs. Harold Warner, was selected this
Continued on page 7

GOOD WESTERN plus Imaginative Drama on the double bill at the Star Theater, Thursday, Friday-Saturday.

Better to be safe than to be sorry!

DON'T LET FIRE THROW YOU FOR A FINANCIAL LOSS

Are your farm buildings and their contents adequately insured against loss by fire? Better let us check your coverage.

For all types of farm insurance coverage, see us.

Turner, Van Marter & Bryant
INSURANCE
PHONE 6-9652 HEPPIER

STAR THEATER
Thurs., Fri., Sat. Dec 19-20-21
Quantex
Fred MacMurray, Dorothy Malone, Sydney Chaplain
Plus
I've Lived Before
Jock Mahoney, Leigh Snowden, Ann Harding
SATURDAY, 2 P. M. — ANNUAL FREE SHOW FOR CHILDREN
Sun., Mon., Dec. 22-23
The Quiet Man
John Wayne, Barry Fitzgerald, Maureen O'Hara.
Sunday at 4 and 6:30
NO SHOW CHRISTMAS EVE!

NUTS! WE'LL NEVER GET AT THE GRAIN IN THAT

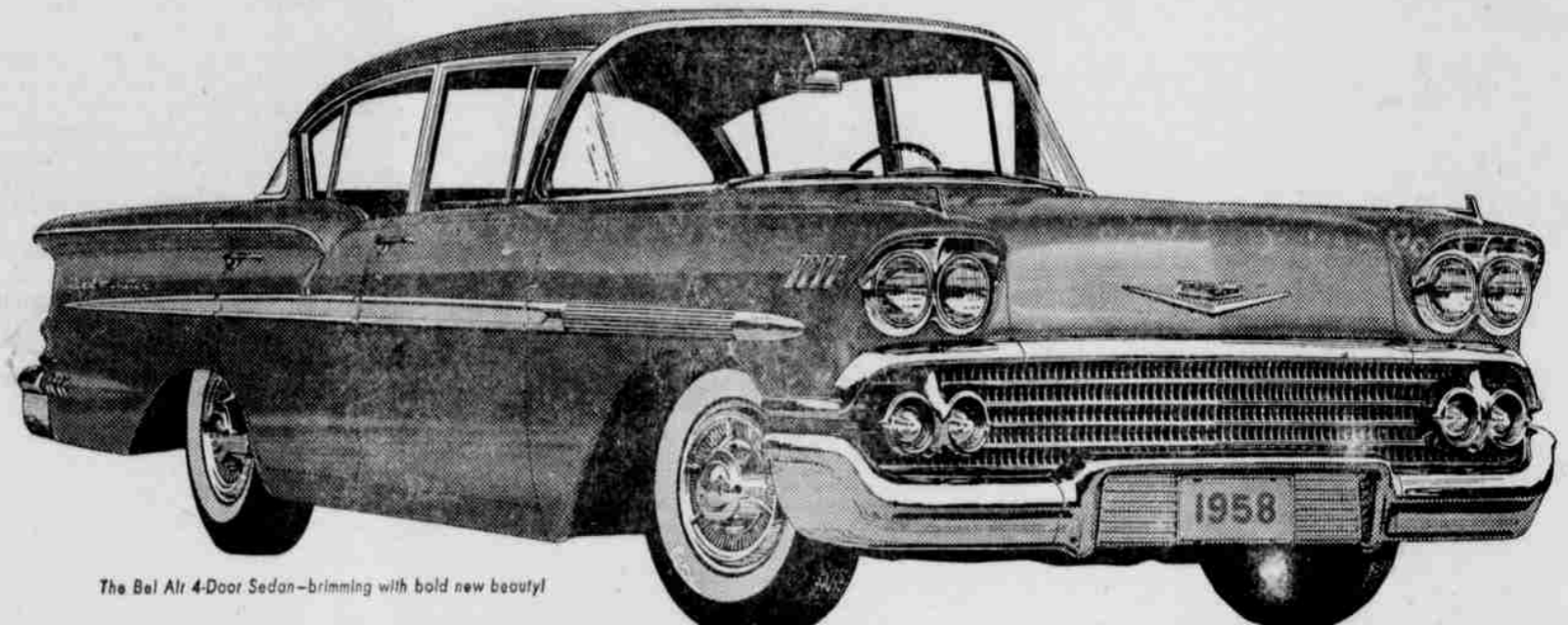
Timberib BUILDING!
LET'S MOVE ON MATILDA!

You shut the door on damage to your grain when you store it in a permanent, versatile Timberib building. At the same time you get post-free space which permits mechanized grain handling.

When not used for grain storage, your Timberib building is ideal for machine storage, loafing barn, or utility building. And the cost? It's the lowest of any comparable building—material costs as low as 94 cents a square foot.

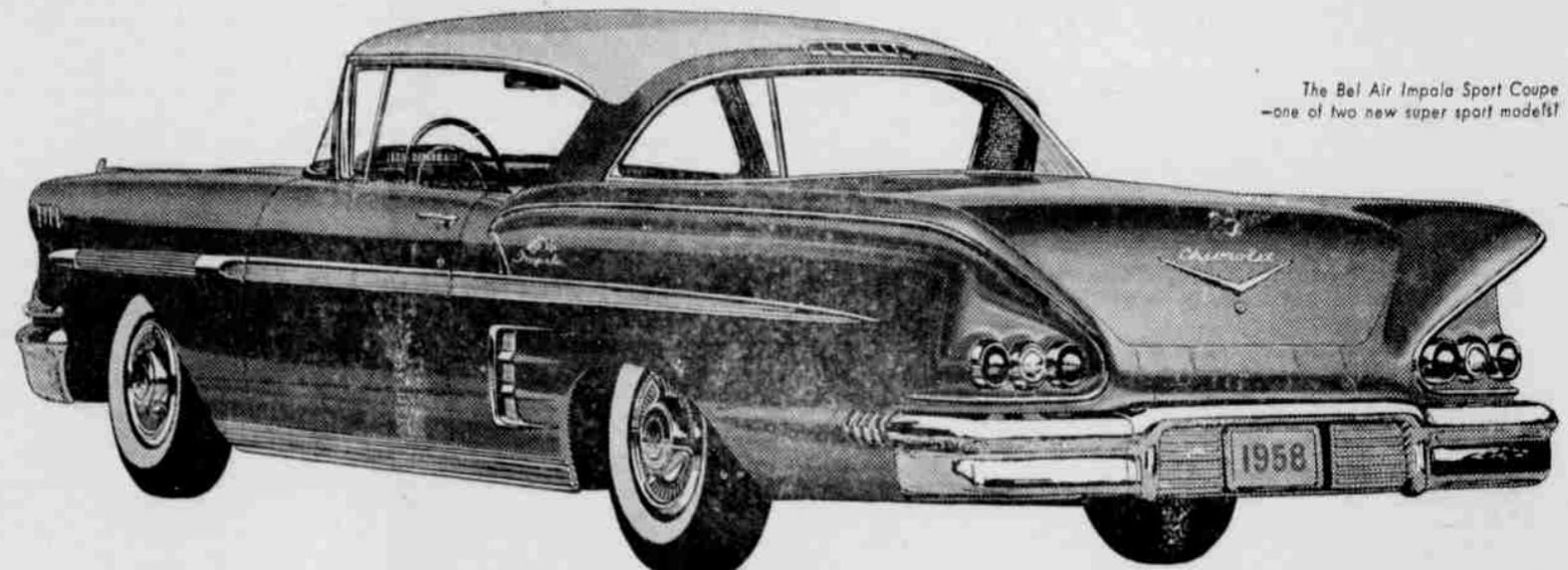
For information on sizes, capacities and costs, see us today or write for free catalog of farm buildings.

AN ENGINEERED PRODUCT OF TIMBER STRUCTURES, INC.
LOUIE CASE
PHONE 6-9486 — HEPPIER



Come try the quickest combination on the road!

CHEVY'S TURBO-THRUST V8 WITH TURBOGLIDE



Chevrolet's radical new Turbo-Thrust V8 and honey-smooth Turboglide* automatic drive form a performance team that spells action. At all speeds, under all driving conditions, they give you the quickest, smoothest response of anything going.

There's never been an engine-drive combination like this one! Chevrolet's Turbo-Thrust V8* introduces a radical new slant on engine efficiency. The combustion chambers are located in the block rather than in the head, and chamber surfaces are precision machined. The result is a wonderfully smooth and even flow of power.

Turboglide*—the other half of the team—is the first and only triple-turbine automatic drive in Chevy's

field. It takes you from a standstill through cruising in one continuous sweep of motion, without even a hint of a shift or lag. Harness these triple turbines to a 250-h.p. Turbo-Thrust V8—or the 280-h.p. Super Turbo-Thrust*—and you step out instantly in any speed range. Nothing else on the road turns your touch into action so quickly, so smoothly. Your Chevrolet dealer has the combination!



Only franchisee Chevrolet dealers display this famous trademark See Your Local Authorized Chevrolet Dealer