

### Lexington Rebekahs Install Officers

**By Delpha Jones**  
The Holly Rebekah lodge met at the usual time on Thursday evening with installation of officers being the business of the evening. The following were installed in offices: N. G., Alice Majeske; V. G., June Cooper; sec., Annie Keene; treas., Freda Majeske; chaplain, Delpha Jones; warden, Merle Cornelson; conductor, Florence McMillan; R. S. N. G., Cora Warner; L. S. N. G., Maxine Cox; R. S. V. G., Jo Irvin; and L. S. V. G., Donna Papineau; outside guardian, O'Willia Hunt, and inside guardian, Cattie Padberg. Later refreshments were served in the dining room.

Mr. and Mrs. Jack O'Harra and family returned to their home in Portland last week after several days spent at the home of his parents, Mr. and Mrs. Newt O'Harra.

New Year's visitors at the C. C. Jones home were Mrs. W. I. Miller and son Gary and Mr. and Mrs. Don Miller and children of La Grande.

SP2 Earl L. Miller returned to La Grande on Monday after a couple of weeks visit at the home of an uncle and aunt Mr. and Mrs. C. C. Jones.

Don Casteel has returned to Eugene to college after the holidays spent with his sister and family, Mr. and Mrs. B. J. Doherty.

Asa Way and Marvin Way returned Sunday from a trip to Camp Jones, California where they visited with a brother and family, Mr. and Mrs. Joe Way.

Paula Barak returned to her school at St. Paul's academy in Walla Walla after the holidays spent with her parents, Mr. and Mrs. Jack Barak.

Mrs. E. E. McFadden is a patient in Mid-Columbia hospital in The Dalles where she underwent major surgery one day last week. A daughter Inez is remaining there to be with her mother. Visitors at The Dalles to visit her this week have been her husband E. E. McFadden and son Sonny, Mr. and Mrs. Dean Hunt, and Mr. and Mrs. W. E. McMillan.

Paul Breeding and Johnnie Darnelle were visitors with Paul's parents from Portland over the New Year holidays.

Wilbur Steagall is a patient in St. Anthony's hospital following surgery there on Wednesday.

Miss Joan Patrick returned Tuesday from the holidays spent in Baker.

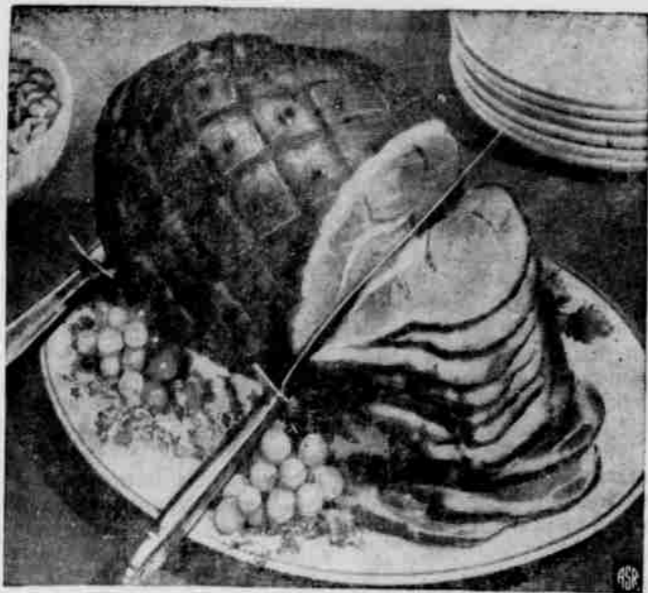
Tom Waddill, son of Mr. and Mrs. D. Waddill, visited his parents over the holidays from his studies at Mount Angel.

Miss Phyllis Nolan returned to school at Northwest Christian College where she is a student, and Larry Groves to Lewis and Clark in Portland.

Let's don't forget Grange which will be held on Saturday night.

### Something New In Hams

By Marie Gifford



Here's real news for the homemaker—now you can buy a semi-boneless ham that's easy to carve. The troublesome hip bone and shank bone have been removed. Only the straight leg bone remains. Carving is an easy task—just stand the ham on its side and slice from right to left, cutting down to the leg bone on each slice. Then loosen all of the slices with one horizontal cut.



Standard Bone-in Ham



Semi-boneless Ham

For your money, you get more slices, less meat, less bone waste, less fat and no skin when you buy a semi-boneless ham.

All semi-boneless hams are sugar-cured and hickory smoked. They are available in weights from 8 to 18 pounds.

If you wish to serve the ham hot, follow the cooking or heating instructions printed on each individually wrapped ham. A 12-pound ham will heat through in about 3 hours.

About 1/2 hour before the end of the cooking time, score the fat and stud with whole cloves. Glaze with a mixture of 1 cup brown sugar and 1/2 cup white corn syrup or fruit juice. Continue baking until ham is browned.

### Suggestions for TV Viewing, Lighting Told by Specialist

Improper lighting in a television room can cause headaches and eyestrain, according to Myrtle Carter, Oregon State college home furnishings specialist. Soft over-all lighting in the room is suggested to reduce glare and take gloom from the room. Children, especially, may become frightened in a dark room when scary "Whodunits" or other program thrillers are on, reminds Mrs. Carter. She says watching a bright screen in a dark room can be as tiring to the eyes as driving against the glare of oncoming headlights on a dark

night. A sharp contrast between a spot of bright light against surrounding darkness causes eye fatigue.

To balance the screen light, soft indirect lights placed at the back of the television set or above it may be used. Low lights that shed a soft glow to the room can be placed at the end of a davenport. However, no light should be placed between the viewer and the television receiver, the specialist stresses. If lamps are used, medium-dark shades are easier on the eyes than white or very light-colored ones.

A list of guides is offered for checking television habits:

Parents should not permit children to look at television while lying on the floor. It is recommended that all viewers look down slightly on the picture.

Viewers should sit not closer than 6 feet and not farther than 15 feet away from a 21-inch screen.

Place the Television set in the room so that light reflections from windows do not reflect on the screen.

If you drive at night after watching a television program, allow your eyes to adjust to the far lower brightness outdoors, Mrs. Carter recommends. Twenty minutes to a half hour is usually sufficient.

### Monument News

Lyle Cork who runs the mail stage line from Arlington to Fossil visited his niece and family, the Roy Bowmans on Christmas. Mr. and Mrs. Ivory Jewel drove to Heppler Monday for a medical checkup for their daughter Nedra.

Mrs. McVay and two daughters have returned after spending three weeks in Kansas City visit-

ing her parents. Mr. and Mrs. Harold Lippert drove to Pendleton Friday even-

ing with their youngest son, for medical aid. They returned home on Saturday.

## Firestone's Greatest Sale

ALL SIZES — ALL TYPES — SALE PRICED

### Super Champion

Black Sidewall		White Sidewall	
Size	Sale Price Each*	Size	Sale Price Each*
<b>Tubed Type</b>		<b>Tubed Type</b>	
6.70-15	14.35	6.70-15	17.55
7.10-15	16.05	7.10-15	19.70
7.60-15	17.60	7.60-15	21.55
6.00-16	12.55	6.00-16	15.35
6.50-16	17.25	6.50-16	21.15
<b>Tubeless</b>		<b>Tubeless</b>	
6.70-15	16.15	6.70-15	19.85
7.10-15	17.95	7.10-15	22.05
7.60-15	19.70	7.60-15	24.15
		8.00-15	26.85

\*Plus tax and your recappable tire

## AKERS MOTOR SERVICE

IONE, OREGON

PHONE 8-7112

## PLAN TO ATTEND

### Morrow County Livestock Growers

ASSOCIATION

# Annual Meeting

HEPPNER

Friday, Saturday, January 11 - 12

## A Top - Flight Program

HEADLINING—

### ERVIE WILLIAMS

President of Portland Union Stock Yards Who Will Speak At Saturday Night Banquet

FRIDAY FEATURE—

### "FINANCING LAND AND LIVESTOCK"

A panel discussion with B. C. "Brad" Telyea, Federal Land Bank (Pendleton N. F. L. A.), L. E. "Bud" Tibbets, Agriculture Field Representative, First National Bank of Portland; and J. E. "Jerry" Herberger, Northwest Livestock P. C. A.

SATURDAY FEATURE—

### "LIVESTOCK MARKET TRENDS & PROBLEMS"

A panel discussion with Ernie Williams, president, Portland Union Stockyards as moderator; Si Williams, auctioneer, Livestock Sales Management, commercial and registered cattle; Prosser Clarke, Benson, Bodine and Clarke, Portland on Lambs; and H. A. Cohn, dealer and feedlot operator on wool.

AND MANY OTHERS INCLUDING BOB HARRIS, FOREST SERVICE RANGE SPECIALIST

SOCIAL HOUR --- Saturday, 5:00, Elks Lounge

Provided By Heppler Branch, First National Bank Of Portland

## Banquet Saturday 6:30 - Fair Pavilion

PRIZES — Given Away Both Days — PRIZES

All Events and Meetings at Elks Temple Open to Public

Here comes the Blue Chip line of trucks:

# GMC's BIG 1957 MONEY-MAKERS

With new V8's to 232 hp

With 4- and 6-wheel models to 60,000 GCW

With advanced Hydra-Matic Drive\*

New cabs with 89" b.b.c.

THESE '57 GMC's are going against the amazingly low cost records set by their famous '56 versions.

But—as you can see—they've got plenty to smash those records with!

In fact, these Blue Chip advantages are in 36 models that can be practically custom-built for their jobs.

What you need, we sure have got. Call us—and we'll have a man over to prove it!

\*Standard on some models; optional at moderate extra cost on others



See us, too, for Triple-Checked used trucks

FARLEY MOTOR COMPANY  
MAY AND CHASE HEPPNER, OREGON