

SWIFT POWER DAM, highest earth-fill dam in the world, will look like this when completed by Pacific Power & Light company. Massive dam will be 510 feet high from foundation to crest and will contain 15,000,000 cubic yards of rock and earth. Power house at dam will be rated at 189,000 kilowatts, while a second one downstream will be rated at 67,500 kilowatts. Entire project is to be in operation late in 1958. Drawing below shows comprehensive plan for power development being carried out on the Lewis river by Pacific Power & Light. The Yale and Merwin plants, totaling 233,000 kilowatts are already in operation. Swift is under construction, and the proposed Muddy development, rated at 100,000 kilowatts, and Meadows, estimated at 75,000 and 100,000 kilowatts, are under investigation.

New PP&L Swift Dam to Be World's Highest Earth Fill

A world record for high earth-fill dams will be established by Pacific Power & Light company when it completes the Swift power dam, its newest power project on the Lewis river.

Paul B. McKee, president of Pacific, said that the project also will have the company's largest power plant. It will be completed and in production late in 1958.

Into the massive dam will go 15,000,000 cubic yards of rock and earth—enough to bury a 20-square-block area more than 500 feet deep.

Contract for construction of the dam has been awarded by Pacific to the J. A. Jones Construction and Charles H. Tompkins companies. Both have been active in dam and power plant construction throughout the United States and have just finished the Palisades dam project in Idaho for the bureau of reclamation.

The Jones company also was part of the Atkinson-Jones-Ostrander contractor group which built McNary dam on the Columbia.

Bid price for building Swift dam, including spillway, power tunnel and excavation for the power house, was \$18,272,000, McKee said.

In addition to the huge quantity of "fill" which will go into the Swift dam, the contract calls for placement of more than 55,000 cubic yards of concrete and 6,400,000 pounds of reinforcing, structural and plate steel.

The dam will be 510 feet high from foundation to crest, 2100 feet long at the crest and 1950 feet thick at the base. A large diversion tunnel which carries the river underground for 2990 feet around the site of the dam during construction already is in use.

Output of the Swift dam power house will be 189,000 kilowatts.

State Weed Control Meetings Scheduled Nov. 12-14 at Bend

The annual strategy meeting for Oregon's continuing war on weeds is scheduled November 12 to 14 at Bend, reports Roy Stevenson, Madras president of the Oregon Weed Conference.

New chemicals, weed control for both farm and non-farm lands, and weed problems of forest and range lands are main phases of this year's program.

The five-year old conference to combat the state's No. 1 pest, Stevenson says, is open to everyone who is growing or fighting weeds. Interested persons can obtain advance copies of the program from conference secretary Rex Warren, Oregon State college farm crop specialist.

Representatives of four major chemical companies will report on new chemicals—what they control and how to use them. OSC scientists will review experimental work with weed control on both agricultural and non-agricultural lands. The latter includes home and industrial sites, parks and golf courses, and right-of-ways for highways and utilities. Persons concerned with such lands, including city officials and representatives of the county government, are urged to attend.

Weed and brush control on range and forest lands will be discussed by U. S. forest service representatives and OSC researcher Don Hyder of the Squaw Butte-Harney branch experiment station near Burns, who will advise ranchers on aerial and ground spraying for control of sagebrush and rabbit brush.

A second power house 3 1/2 miles downstream will develop another 67,500 kilowatts and will be built and owned by the Cowlitz county PUD in a joint development of the project.

Other topics for the three-day session include: safer use of herbicides, Virgil Freed, OSC agricultural chemist; control of weeds in a long ditches, Dean Boyle, Boise, U. S. bureau of reclamation; cost study of commercial spray application; weed law report and common ragweed in Oregon, Frank McKennon, state department of agriculture.

Sessions will start November 12 at 1:30 p. m., Pilot Butte Inn.



My Thanks-

To the voters of Morrow county who gave me their support in my race for Representative from the 22nd district. Your efforts in my behalf are greatly appreciated.

Jerry Barnett

TURKEY AND HAM

SHOOT

SUNDAY, NOV. 11

MORROW COUNTY

GUN CLUB

2 MILES SOUTH OF HEPNER

They're Here-

Our New Fall and Winter

Pendleton

SKIRTS-
JACKETS-
SWEATERS-

FOR WOMEN

Our new line of Pendleton sportswear for women has now arrived and you'll want to be one of the first to select from our big stock. See it today.



SLIPOVER SWEATERS \$9.95

Three-quarter length all wool Pendleton slippers with full-fashioned sleeves. Colors to match or mix with Pendleton skirts. 38 to 42.

PENDLETON SKIRTS \$14.95

The famous Pendletons in smart solid colors. Sizes 10 to 18.

JACKETS \$17.95 - \$19.95

The popular Pendleton plaids in a host of new colors. Sizes 10 to 18.

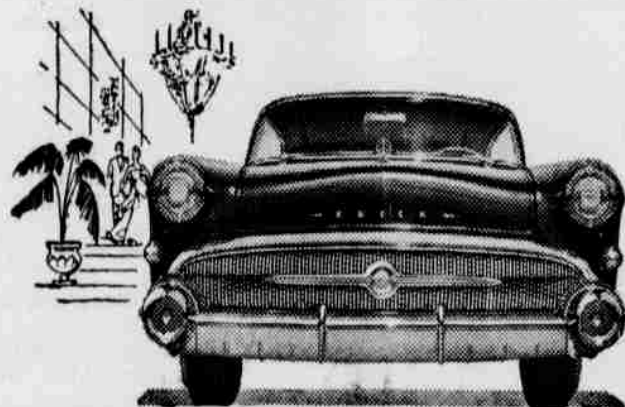
ALSO—

Full Selection of
**MEN'S
PENDLETON
SHIRTS—
ROBES—
TOPSTERS—**

REMEMBER—
We Are Headquarters
—FOR—
**ARCTIC
INSULATED
UNDERWEAR**

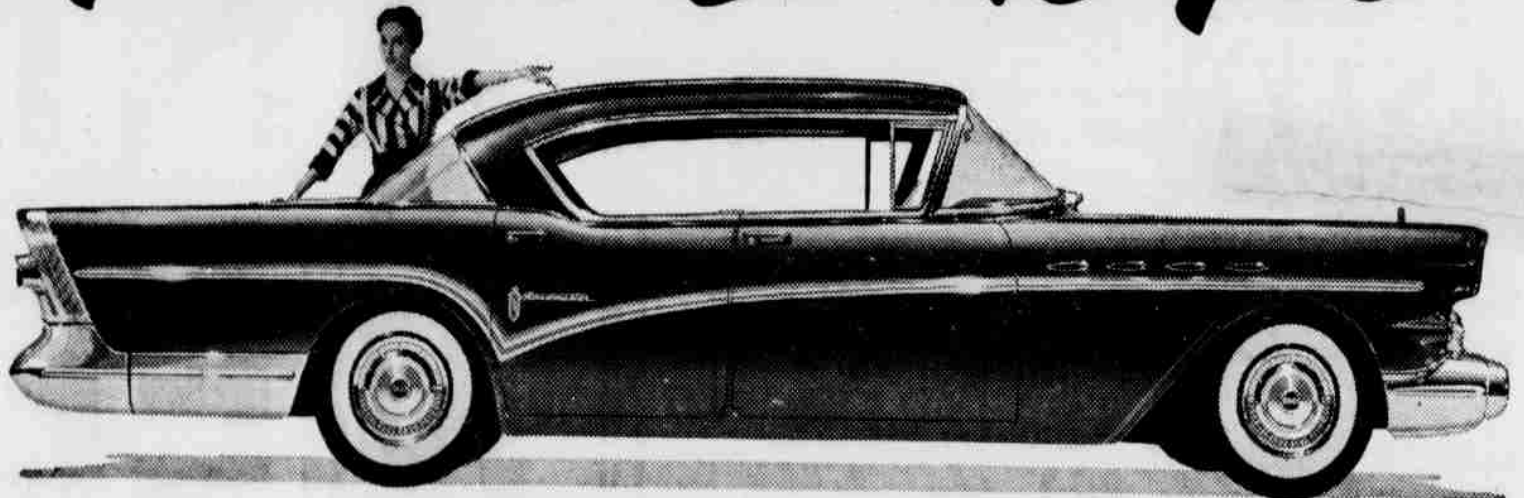
Wilson's Men's Wear

The Store of Personal Service



We got it!
We got it!

Newest Buick Yet



YOU know all that talk you've been hearing about the 1957 new car models being *really* new?

Well, in the case of the 1957 Buicks it's true—*gospel* true.

We mean these 1957 Buicks are new in the precise and literal sense. We mean new from the ground up, and from gleaming grille to sassy taillights.

We mean new lowness, new styling, new bodies, new windshields, new controls, new safety-padded instrument panels, new safety steering wheels, new seating, new fabrics, new colors.

We mean new front end, new rear end, new frame, new braking, new steering, new handling, new riding, new roadability—a whole new chassis of greater solidity and safety.

We mean V8 engines new from the crankshaft up—engines that deliver an all-time high in horsepower and

compression from their 364-cubic-inch displacement.

And we mean, most of all, an *advanced new Variable Pitch Dynaflo**—so instant in the starting range—so utterly smooth and so totally full-range in "Drive"—that your need for "Low" is practically eliminated.

So come take in these low-silhouette, these boldly beautiful, these *instantly obedient* Buicks for 1957.

Then you'll see why you can't blame us for being so fired up about it all—and how catching this excitement can be.

*New Advanced Variable Pitch Dynaflo is the only Dynaflo Buick builds today. It is standard on Roadmaster, Super and Century—optional at modest extra cost on the Special.



SEE "JACK AND THE BEANSTALK" ON NOV. 12th
—A new NBC-TV color spectacular brought to you by your Buick Dealer—

WHEN BETTER AUTOMOBILES ARE BUILT BUICK WILL BUILD THEM

FARLEY MOTOR COMPANY

MAY AND CHASE

HEPPNER, ORE