

New Hard White Wheat Ready for Oregon Release

OREGON STATE COLLEGE—Release of a new hard white winter wheat variety this fall may swing Oregon's wheat industry into large-scale production of bread flour and improve the state's export position.

Representatives of the Oregon Seed Allocation committee announced this week that 8,000 bushels of the new variety are ready for commercial plantings in Oregon's intermediate rainfall area of 10 to 14 inches.

Committee chairman D. D. Hill, Oregon State college farm crops department head, says actual distribution of seed will be handled by county committees appointed jointly by the Oregon Wheat League and the OSC extension service.

Official release of the new wheat was made Friday in Walla Walla at a meeting of industry representatives and OSC and Washington State college researchers who worked jointly on its development.

The new variety—still referred to by its technical name Selection 41 of 27-15 X Rio-Rex—is highly smut resistant and outyields its parent, Rio, the main turkey-type wheat grown in the 10 to 14 inch rainfall area. The 27-15 strain has the same parentage as Brevor. Selection 41 will be

named after title clearance by the U. S. department of agriculture. Suggested names are, Brio, Burt, and Bayles.

Need for such a wheat has long been felt by Pacific Northwest millers who import most of their bread-type wheats from Montana. At the same time, foreign buyers of Pacific Northwest wheat report strong demand for bread-type wheats. Most of the region's current exports are soft club varieties not suited for the bread flour.

OSC research administrators and industry representatives are hopeful that Selection 41 will replace club and turkey wheats in the intermediate rainfall areas as fast as seed is available. Dr. Hill says this year's 8,000-bushel seed supply in Oregon should seed some 16,000 acres of the state's 200,000 acres in the 10 to 14-inch rainfall area. Recommended seeding rate will be 30 pounds or less per acre based on Umatilla county trials last year when seeding rates as low as 20 pounds gave wheat yields in excess of 70 bushels per acre.

Selection 41 has a bearded, common type head, white chaff, and short lodge-resistant straw in contrast to limber-strawed Rio that lodges badly. Over the past six years, Selection 41 has yielded slightly more than Elmar and Brevor and 18 percent more than turkey wheats in the intermediate rainfall area.

Researchers point out that the new wheat should mean better profits for producers and more stable markets for wheat from this area. Since turkey wheats are low-yielders in the area, the

Yosemite Perks Up Under Mission 66 Program, Motorloggers Report

New Facilities Include Modern Yosemite Lodge

The following is a condensation of a motorlog appearing in Northwest rotogravure magazine of The Sunday Oregonian. It is one of an annual series sponsored jointly by the Oregon State Motor association and The Oregonian.

BY J. RICHARD NOKES
City Editor, The Oregonian

A brighter day has dawned for our national parks. Two years ago in the white Ford of the Oregon State Motor association we visited four national parks in California, Oregon and Washington and came back with a rather dismal report of many conditions we found therein. Housing was below par, sanitary facilities in many cases were poor, campgrounds were run down, roads and parking facilities inadequate.

Last month on another Oregonian-Oregon State Motor association motorlog we visited the largest of those four parks, Yosemite in central California, and came away convinced that things are definitely looking up in our wilderness wonderlands.

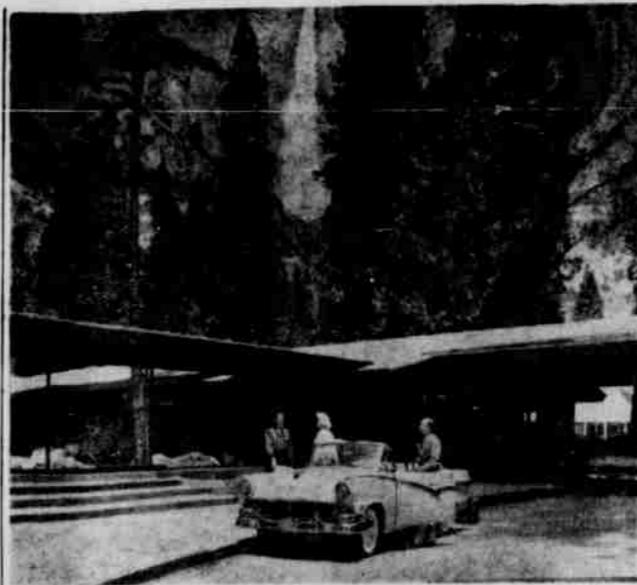
There are two main reasons for this optimism:

1. Concessionaires, the private companies who supply the lodging, restaurants, gift shops and the like, have greater confidence in their long-term futures. They feel that gone is the threat of a few years back that private enterprise might be replaced by the federal government in providing creature comforts to those who desired more than a starchy sky for a ceiling and mother earth for a bed.

2. The park service, supported by congress and the administration, has embarked on a ten-year improvement program, "Mission 66," which will provide \$500,000,000 for capital improvements and another \$250,000,000 for operation and maintenance if carried through.

Let's take first what the Yosemite concessionaire has accomplished.

In the last year Yosemite park and Curry company has invested upwards of \$1,000,000 in capital improvements (more than \$2,000,000 in the last four years). A new Yosemite lodge, dedicated in June, cost \$1,000,000. Other funds were spent for a new hotel-type housing unit that will accommodate 70 persons in modern middle-class



Swank Yosemite lodge, dedicated in June, took the place of "temporary" facility which had lasted 40 years. At foot of Yosemite falls, it has three units of redwood, stone, glass.

style. The new unit, called Cedar cottage, joins Pine and Oak cottages, which were built within the last four years.

The lodge replaced a "temporary" facility that was erected 40 years ago. Nestled near the foot of magnificent Yosemite falls (2425 feet high, four times higher than Multnomah falls), the lodge is a picturesque three-unit development of steel, redwood, stone and glass. It contains a lounge that will seat 200 with glass walls providing a spectacular view of the falls. A massive open, circular fireplace decorated in ski motif is the center of interest.

A second building contains a cafeteria that will seat 300, a coffee shop of smaller capacity, a gift shop and service units, cocktail lounge, post office and souvenir shop. This building opens onto a terraced outside dining court.

The third building comprises the registration center, offices and the lobby.

On the other side of the ledger, the campsites are definitely in need of improvement, and Superintendent Preston said this is high on the list under Mission 66. Most of them have no cooking facilities except a circle of stones for a campfire site, plumbing in public restrooms is rusty and stained, water outlets are scarce. Trailer accommodations are substandard, but a survey has been completed and will be used as a guide to improvement.

What has the park service done the last couple of years? growers have swung heavily to club wheats in recent years. Unfortunately, the high-yielding club wheats have been going outside their area of adaptation and do not always produce suitable pastry-type flour and have had the wrong characteristics for bread flour.

Milling and baking trials show the new wheat produces flour and bread that compare favorably with any of Oregon or Washington's hard red winter wheats. Tests were conducted by cereal chemists of the USDA Western Wheat Quality laboratory and commercial mills in the Pacific Northwest.

Some millers attending the meeting opposed release of the new variety, fearing that it might replace certain hard red winter wheat varieties which they rated higher.

Although Selection 41 is highly smut-resistant now, it should be treated with hexachlorobenzene as a safeguard against development of new smut strains, advise OSC scientists. The HCB treatment controls both seed and soil-borne smut spores.

And what will it do first under Mission 66?

It has begun to meet one of the most pressing needs—parking space near centers of interest in the valley. It is presently working to repair some \$800,000 in damage to roads, sewers, trails and campgrounds caused by a Merced river flood last winter.

Flood Repairs Necessary

In fact, the amount of money which must be spent to repair the flood damage will reduce considerably the amount the park service had hoped to spend on relocating and reconstructing a 21-mile pioneer stretch of road through Tioga pass that connects Yosemite with Lake Tahoe, Reno and eastern points.

A large new campground development is planned in the Bridal Veil area on the road to Glacier point. This and other campground improvements will total \$75,000. Improvements to roads, trails and parking areas will cost another \$51,300.

Mission 66 is a ten-year program that will end in the 50th anniversary year of the national park service, 1966, and is designed to ready our parks for steadily increased use through the years.

Mission 66 is not entirely a matter of money. It is an adoption of a philosophy that long has been needed in the park service. It is a statement by the government that our park system is a primary economic asset and is not to be longer treated like a dog fed with leftovers.

The potato and straw plus supplement fed cattle also came out ahead on carcass grade. E. N. Hoffman, Malheur station superintendent, and J. E. Oldfield, OSC animal husbandman, reported that the potato-straw carcasses graded 1 commercial, 13 good, and 9 choice. The alfalfa-corn group graded 17 good and 1 choice.

In the experiment, potatoes were fed whole and free choice. Straw also was fed free choice. Small amounts of alfalfa grass hay were fed the first 10 days until cattle were eating potatoes regularly.

Swelling and stiffening of the front legs of some cattle was the

only ill effect noticed in the potato-fed animals. However, the researchers said this didn't seem to affect feed intake or gains. One animal choked on a potato early in the experiment and had to be slaughtered. But after the cattle learned to eat the potatoes there was no further trouble, it was reported.

Costs in the project were figured on the basis of prices at Ontario.

Mr. and Mrs. Bob Kelly and daughter Luan of Everett, Wash., arrived Tuesday to visit with her parents, Mr. and Mrs. Raymond Ferguson.



GET YOUR School Clothes

NOW AT WILSON'S



Men's & Boys'

JANTZEN SWEATERS

Jantzen's smart Kharafleece knits in fall's most popular colors and styles.

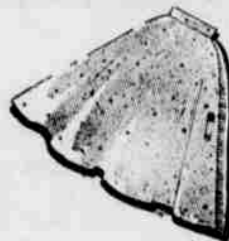
\$11.95

WHITE CORDS 6.95

SNAG-PROOF SUNTANS 6.95

Sport Shirts - Jackets - Shoes

Jockey Underwear



For The Girls—

New Fall Sweaters & Skirts By Kandel

GRAFF SPORTSWEAR

50TH ANNIVERSARY SPECIAL—

BERKSHIRE NYLONS

Dress Sheers in Light or Medium Biège

\$100

Wilson's Men's Wear

The Store of Personal Service



Illustrated GMC Model 450 is available with a 180 h.p. V8 engine or 160 h.p. six. It has over-size axles—7,000 lbs. front and 18,000 lbs. rear. It's rated for 25,000 GVW-50,000 GCW work.

They cut your costs -to extra-profit size!

It's no accident you're seeing so many more Blue Chip GMC's these days—brezing through all manner of tough, in-a-hurry jobs.

Truck users are buying them for just one reason: *These trucks make them more money.*

They haul bigger loads. They make more mileage a day. They miser fuel. And they can go up to *twice* as far between overhauls.

Credit belongs to a GMC's unsurpassed power-train combination: New short-stroke engines of ultra-

efficiency. Extra-capacity axles. Brawny transmissions that include moneysaving Hydra-Matic.*

One of these combinations is made to order for *your* job—no matter what your kind of truck work. And our truck specialists are trained to give you the truck that's right for you.

But no matter which model you choose, you can count on getting Blue Chip performance. That's backed by the expert service work always available at this headquarters. Come in and talk it over!

*Standard on some models; optional at extra cost on others

See us, too, for Triple-Checked used trucks

FARLEY MOTOR COMPANY
MAY AND CHASE HEPPNER, OREGON

REMEMBER-

WE GIVE YOU

S & H Green Stamps

WITH

Shell Heating Oil

JIM HEALY

SHELL OIL DISTRIBUTOR

PHONE 6-9406

HEPPNER