

HEPPNER GAZETTE TIMES

MORROW COUNTY'S NEWSPAPER

The Heppner Gazette, established March 30, 1883. The Heppner Times, established November 18, 1897. Consolidated February 15, 1912.



ROBERT PENLAND
Editor and Publisher
GRETCHEN PENLAND
Associate Publisher



Published Every Thursday and Entered at the Post Office at Heppner, Oregon, as Second Class Matter
Subscription Rates: Morrow and Grant Counties, \$3.00 Year; Elsewhere \$4.00 Year. Single Copy 10 cents.

Somebody Goofed—

Somewhere back up the line between the local TB and Health association and the state organization somebody pulled a brodie recently when the 1955 Christmas seals were sent out to the Morrow county organization for distribution locally. It seems that a great many residents here have received 1954 Christmas seals instead of the ones for 1955, and as a result there have been a few red faces seen among the officers of the local TB and Health association.

The local officers can't take the blame however, for the seals come to them folded and ready for insertion into envelopes for mailing. The crew examined some of the seals received and they were the new 1955 model, but apparently farther down in the pile someone at headquarters got some old ones tangled up in the shipment. Inasmuch as the seals come folded face-in, it was an easy mistake to make but it has caused considerable comment.

Though you might have received last year's seals, your dollar or two will be appreciated, for the money will go for a good cause. The 1954 seals were pretty anyway, even though they aren't quite up to date.

It never fails! If there is anything that will bring a windstorm to Heppner, it's the hanging of our Christmas street decorations. This year has been no exception, for only last Sunday a crew labored diligently to get the boughs and lights strung across the streets then Tuesday morning along came a wind and left numerous blank spots on the streamers.

Someone could make a fortune if he could figure out some way to paint wire green to simulate fir boughs.

Speaking of wind and weather, Heppner certainly proved again during the past week or so that it is really in the banana belt. While we got

snow and colder weather on several occasions, it didn't last long and on Monday and Tuesday while we were basking in warm winds and relatively mild temperatures, residents five miles away were still in the grip of old man winter with freezing snow, rain and fog and icy roads. Don't know just what we've done to rate such fare from the weather man, but most people hope our luck holds.

We know it's none of our business, but we can't help but get a little enjoyment out of the wrangle the city of Portland has going over where it is going to build its new recreation-exposition center. We should sympathize, probably, and we do, with the men who fell heir to the committee job of finding the proper location, for we see in their problem a great resemblance to the one the Heppner school board faced when it was trying to determine the location for the new grade school.

Here, there were people who thought the schools should be separated and could see no difficulty in a school being four or five blocks from the center of town—the equivalent of two or three miles in Portland. Also there were those who felt it should be as close in as possible so the youngsters wouldn't have to walk any farther than necessary. As it turned out, the latter group won.

In Portland, one group is fighting to put it right downtown where the traffic is already too heavy for the existing streets and parking is at a premium. Another faction wants it put where there is room to expand and conveniently handle the traffic it will automatically draw. They claim that in this day and age a couple of miles doesn't mean a thing, as long as the cars can be parked when they arrive.

It is our guess that Portland will eventually build its new center right downtown, and then in four or five years have to turn around and spend another 8 or 10 million dollars trying to unravel the traffic problem it has caused itself.



Avoid the Last Minute Rush—Be Sure Your Christmas Cards and Gifts Arrive on Time.

THIRTY YEARS AGO

From Files of the Gazette Times
December 10, 1925

Heppner Lodge No. 69, A. F. & A. M. chose new officers for the coming year last Saturday night. C. J. D. Bauman was elected W. M.; F. E. Farrior, S. W.; R. W. Wightman, J. W.; Frank Gilliam treasurer and L. W. Briggs, secretary.

Claude Cox, manager of Morrow County Creamery company, departed for Portland last Friday.

Sam E. Van Vactor, who was orator at the Elks Memorial services Sunday afternoon, departed for his home at The Dalles yesterday.

Charles McElligott, who is a farmer of the lone section, was doing business in this city on Tuesday.

Activity in debate is assuming a paramount place on the high school calendar this year, with the goal of working up a representative high school team which shall be able to meet and cope favorably with teams from neighboring schools.

lecting working plans of various beef cattle equipment throughout the state. With this equipment they have weeded out and improved plans for the bulletin. The bulletin includes pictures and plans for such equipment as corals, chutes, scales, head gates, gates, loading chutes, spray corals, hoof trimming stocks, mangers and feed bunks, molasses feeders, salt boxes, cattleguards, creep feeders, portable shelters, beef cattle shelters and silos. Also included in the bulletin is information on computing floor areas and feed requirements. A copy of this well illustrated bulletin is available at the office.

While mentioning plans, another well illustrated booklet on sheep shelters and equipment was

received in the office only recently. This is a U. S. D. A. bulletin which lists the plans available from the college. There are a number of excellent plans for sheep sheds of various sizes, of pole and regular construction, with plans for self-feeders, hay and grain feeders, salt and creep feeders, shipping and weighing crates, wool box, wool packing rack, parting chutes, and dipping vat.

Several livestock men have called at the office to discuss lice control in their cattle herds before going into winter. This is the time of year when lice infestations start to bother and build up over the winter months to sap the strength of cattle and calves. Unless controlled early in the winter, they can cause losses in gains and prevent cattle from maintaining body weights to be in good condition for calving. Luke Bibby, Balm Fork rancher, last Thursday sprayed his 1955 calves which he will winter and sell off the grass next year. Luke said the calves didn't seem to be doing as well as they should and he thought that a good spraying would help.

Each spring we have numerous inquiries at the office on control of cheat and foxtail, as well as other weeds around farm buildings, machinery lots, fence rows, and waste spaces. Generally the inquiries are received too late to do any good on controlling them for that year. Now is the time to be planning your applications of soil sterilants of which there are many to do an excellent job of controlling these kind of weeds. While controlling them where they are a problem, it will also reduce the spread to adjacent cropland. At the present cost of sterilants, more than 1,000 square feet of surface can be treated for less than \$5.00. Several materials are used, the chlorates, which are commonly used require 15 pounds per thousand square feet, the chlorate-borate mixtures, which there are several, are used more commonly around areas where there is danger from fire. They are used at the rate of 30 pounds per thousand square feet. A relatively new sterilant is Karmex W. or Telvar W. These materials were sold for some time as CHU. They do not provide long time sterile conditions but fit in very well with a grass control program on the farm. They should be used at the rate of 1 pound per one thousand square feet. Chlorates and Borates are most commonly used dry, while Karmex and Telvar are used as sprays.

Mr. and Mrs. Stephen Thompson of Pendleton were weekend visitors here.

Mr. and Mrs. Jack Marshall of Kennewick, former Heppner residents, were weekend guests of Mr. and Mrs. Alex Thompson.

Mr. and Mrs. Merle Mass and three children of Richland, Washington were weekend guests of Mr. and Mrs. Philip Blakney.



Every Gift Problem Solved—

Are you HARD on a watch?



A perfect gift for an active man—Longines-Wittnauer ALL-PROOF watches give maximum protection. Water*, and dust cannot harm them, main-springs are unbreakable. Balance is rust-proof and anti-magnetic, with improved shock protection. ALL-PROOF models in many styles



LONGINES ALL-PROOF. Handsome case of conservative styling. Fine leather strap. \$79.50 FTI

LONGINES ALL-PROOF. Ultra-thin 14K gold case, impressive in every detail. Suede strap. \$175. FTI

WITTNAUER ALL-PROOF. Stainless steel case. Luminous dial. With expansion band. \$39.75 FTI

WITTNAUER ALL-PROOF. Stainless steel case. Sweep second hand. Luminous. Exp. band. \$49.75 FTI

*So long as crystal, back and stem are intact.

For Your Convenience

We Will Be Open Fridays Till 9
DECEMBER 9, 16 and 23
Peterson's Jewelry

From The County Agent's Office

By N. C. Anderson

All farmers seem to be happy gain much of the deficient deep these days with the great amount moisture that was lacking in the of moisture that is falling. It summer fallow at seeding time, appears now as though we will From the many farmers who are

keeping rainfall records, we find that November rainfall averaged considerable over two inches. All reports that there has been no run-off. Leonard Carlson, long time weather observer in the Gooseberry community reports 2.41 inches for November. This is compared to .71 in November 1954. At his gauge he has measured 11.87 inches for the eleven months to December 1. Last year at this time only 9 inches had been recorded. Leonard also reported 1.32 inches fell at one time during November in the form of snow and rain with no run-off whatsoever.

While moisture conditions look good, there is a bit of speculation in some parts of Morrow county as well as in the Pacific Northwest as to cold damage to winter wheat and barley. At the Moro experiment station, Bill Hall, superintendent, feels that damage was done in the early November storm. A number of grain firms in the Pacific Northwest have inquired for sources of spring wheat in the event of some damage. The Pacific Northwest Crop Improvement Association is attempting to line up sources of spring grain in case damage is evident at spring seeding time. Anyone who has spring grain, wheat or barley, in excess of what they would need for themselves in case of a freeze-out are urged to list it for our information. A card dropped in this office will be sufficient.

Just released this week from Oregon State College is a new bulletin on beef cattle equipment. The animal husbandry department in cooperation with the agricultural engineer, have for the last couple of years been col-

Shop Evenings

WE WILL BE

Open till 9 p. m.

FRIDAY NIGHTS

DECEMBER 9, 16 & 23

Gifts For The Whole Family

Heppner Variety

STAR THEATER, Heppner

Admission Prices: Adults 70c, Students 50c, Children 20c including Federal Tax. Sunday Shows continuous from 4 p. m. Other evenings start at 7:30. Boxoffice open until 9 p. m. Telephone 6-9278.

ON SALE NOW! Theater Gift Ticket Books make an ideal present. \$2.50.

Thursday-Friday-Saturday, December 8-9-10

ROBBERS ROOST

The 100th translation to the screen of a story by Zane Grey—George Montgomery stars.

THE GIRL RUSH

Rosalind Russell, Fernando Lamas, Eddie Albert, Gloria DeHaven, James Gleason. Vista Vision, Color by Technicolor. A super-sensational musical fun film.

Sunday-Monday, December 11-12

THE MAN FROM LARAMIE

James Stewart, Arthur Kennedy, Donald Crisp, Cathy O'Donnell, Alex Nicol, Aline MacMahon, Wallace Ford. CinemaScope Technicolor. Whether you take your sagebrush neat or fancy, you'll like this one—straight from one of the most powerful adventure stories in the Saturday Evening Post.

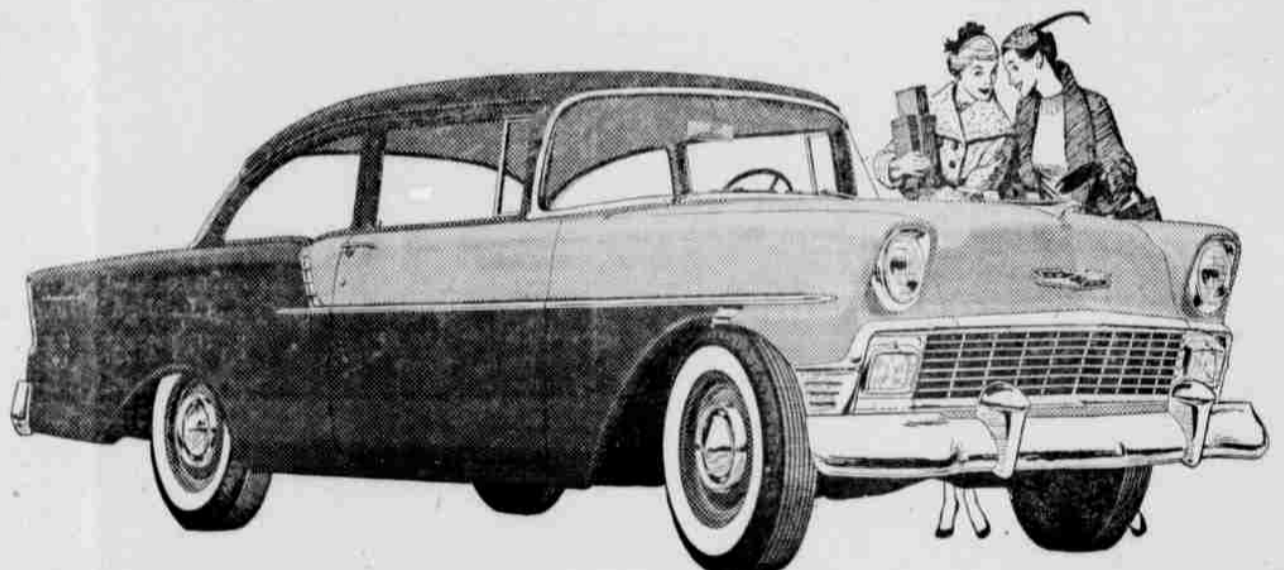
Sunday shows at 4, 6:15 and 8:20

Tuesday-Wednesday, December 13-14

HOW TO BE VERY, VERY POPULAR

Betty Grable, Sheree North, Bob Cummings, Charles Coburn, Tommy Noonan. CinemaScope-Color. A happy comedy hit loaded with rock 'n' roll rhythm.

This Chevrolet keeps a secret...beautifully!



The "One-Fifty" 2-door sedan—one of 4 models in Chevrolet's smart and sprightly "One-Fifty" series.

It's one of Chevrolet's New "ONE-FIFTY" series . . . the

lowest priced of all the new Chevrolets.

You'd never know it to look at all that chrome treatment or to

feel that new power ranging up to 205 H. P.

Come in soon and let us tell you its big secret—its low price tag!

Fulleton Chevrolet Company