

### Motorloggers Find Highway 18 Swift, Scenic Route to Coast Four Great Loops Of Oregon Highway Offer Variation

The following is a condensation of a motorlog appearing July 17 in The Sunday Oregonian Northwest photo magazine. It is one of an annual series sponsored jointly by The Oregonian and the Oregon State Motor association.

BY ANN SULLIVAN  
Staff Writer, The Oregonian

It's a "swift and attractive route to the sea." So was the Salmon river cutoff termed in July, 1930, when The Oregonian's assistant managing editor, Edward M. Miller, then automobile editor, drove a brand new Oldsmobile the 22 dust-covered miles of the newly dedicated highway. Today Oregon 18 is no longer dust-covered. As we found on a motorlog for the Oregon State Motor association and The Oregonian, it's a swift black ribbon of pavement through some of the loveliest variety of Oregon scenery to a segment of one of the state's most attractive strips along the sea, the miles and miles of the Lincoln county beaches.

Add to that segment the coastal strip of Lane county south of Cape Perpetua, another small segment of Douglas county which also touches the coast, and you include four great circles of highway from Portland of increasingly greater lengths. Your time and driving speed determine which might be to your inclination—if you are one of those persons who would rather take a different route home.

#### Road Leads to Otis

The first half of the first loop, of course, is Oregon 18, which we followed in the motor association's white motorlog Ford from Portland to McMinnville, Sheridan and Otis, where it joins the coast highway, U. S. 101.

You can loop back across the Coast range from Newport to Corvallis and thence back up the Willamette valley. This is U. S. 20, a rather curvy but beautiful 57-mile trip (between Newport and Corvallis) through timber operations and some rather fine farmland area.

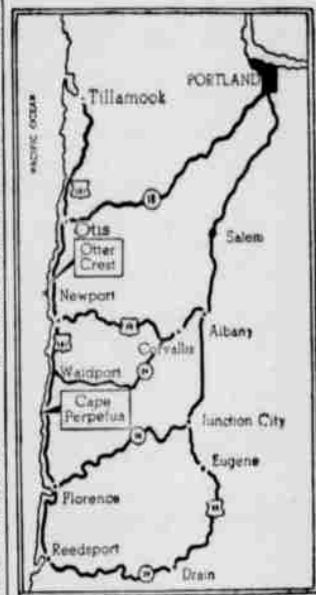
A few miles beyond Newport is Waldport, from which Oregon 34 stretches 65 miles to Corvallis over the hump of the Coast range and along the exquisitely beautiful Alsea river. Loop No. 3 includes Oregon 36, 69 miles from Florence to Junction City, following another beautiful Oregon river, the Siuslaw.

No. 4, and the last considered here, includes Oregon 38, 50 miles from Reedsport across to Drain south of Eugene. It also follows a beautiful river, the Umpqua.

Most important link to these circle routes is the quickest and straightest of all the routes, Oregon 18. Its pass through the Coast range from valley to sea



White Oregon State Motor association car halted at Otter crest, where pleasant trail winds to scenic beach below.



Motorlog map shows four routes which vacationists can travel to the Oregon coast.

is the lowest of all the routes between the Columbia river and California. Altitude at the top is only 500 feet.

The trees are huge. Off the road among them, one can find deep swales of cool green creeks where the skunk cabbage leaves in spring grow four feet long. There are always wildflowers and sometimes wild game to be seen.

The back bay roads at Newport, Waldport, Florence and Reedsport afford extraordinarily interesting things to look at. If one is a camera fan, he'll run out of film every half hour.

Not counting the resorts and towns, look over this list of coastal attractions one can find between Otis and, say, Reedsport, should one choose that as the turning point for a circle route:

Devil's lake; the D river, shortest river in the world;

Boiler Bay state park, usually an entertaining, frothy mass of breakers and foam; the Spouting Horn at Depoe Bay; Rocky Creek state park; Cape Foulweather; Otter Crest state park, with the Devil's punch bowl and a handy, wind-protected curve of lovely beach for picnics; Spencer creek wayside; Yaquina head; Yaquina Bay state park; Lincoln county ocean wayside; Seal Rock state park; Governor Patterson memorial state park; Yachats state park; Cape Perpetua; Neptune state park; M. O. Ponsler memorial wayside; Heceta head lighthouse.

#### Caves House Sea Lions

Devil's Elbow state park; Sea Lion caves, a fantastic under-the-cliff ocean cavern where the roaring water beasts assemble their harems; Darlington state park; Joaquin Miller forest wayside; Jessie M. Honeyman state park; Woahink lake; Cleawox lake; Siltecoos lake, and Tideways state park.

One can have few favorites, for each of these—and the listing leaves out the beaches themselves—has attraction all its own.

Perhaps Cape Perpetua has the most breathtaking view of the coastline anywhere obtainable, however, and the Jessie M. Honeyman park and Cleawox lake area (with fine forest campgrounds) are the most interesting.

In spring the Honeyman park is a veritable jungle of 30-foot rhododendrons, each with hundreds of clumps of pink blooms. The Cleawox lake has fish, water lilies and a picnic area, huge white sand dunes and a fine campground for overnight visitors.

There are numerous forest camp areas the state bureau of parks has made available. If one has his own tent and sleeping bag, but if not, there is no lack of fine motels.

### Frozen Bread Makes Tasty Sandwiches, Specialist Reports

Ever try making sandwiches with frozen slices of bread? Agnes Kolshorn, extension nutrition specialist at Oregon State college, says the latest suggestion to keep the fresh quality of bread, help "refrigerate" the lunch box, and save time in making sandwiches is to do just that.

Bread is easier to spread when frozen than when soft and crumbly, the specialist explains. The chill from frozen slices put together in closely wrapped sandwiches keeps the filling in between fresh and even keeps lettuce crisp for several hours. That chill also helps keep other foods in the lunchbox cold.

When the slices thaw, they have the characteristics of fresh

bread. All in all, it may be considered a "cool" idea, especially for July "Sandwich Month" when lunches often suffer from hot weather, the specialist reports. Miss Kolshorn says the best way to keep bread fresh and avoid staling is to keep it frozen—in the freezer the frozen food compartment, or even the ice cube compartment of the refrigerator.

Many families purchase a supply of bread for a week or two and keep it in their freezers, says the specialist. Frozen sliced loaves are especially convenient because the slices separate readily without thawing and may be used frozen not only for sandwiches but also for toasting. A frozen loaf thaws in 3 or 4 hours at room temperature. Frozen slices thaw more quickly.

### CAPITAL PARADE

Continued from Page 2  
Siskiyou National Forest.  
**NEW LIQUOR AD RULES**  
Amendments made this week by the Oregon liquor control commission now allow advertising of wine for use in recipes, permit crested glassware as product identification in premises where only one brand of draft beer is sold, and provide that reference to price and use of liquor as a gift must be secondary to the principal theme of an advertisement.

Amendments also allow a licensee to publicize his name on match books, napkins and coasters, but prohibit reference to alcoholic liquor on such items. Advertisements containing recipes for use of wine are now permitted but those with distilled spirits such as whiskey are banned.

#### McKAYS COMING HOME

Secretary of the Interior and Mrs. Douglas McKay with Miss Alene Phillips recently returned from a European trip. The McKays have sent Salem friends their intention of spending the month of August at their Salem and beach homes.

#### GUBERNATORIAL WITNESS

Gov. Paul Patterson walked out on his executive shoe Friday to act as witness for his daughter, Virginia, and Jimmie Fred Dollard, as they applied for a marriage license at Marion County Courthouse.

The couple were married Sunday. Mrs. Patterson, who has been in ill health in recent weeks for's orders. Her condition, however, is reported "much improved."



#### NEW GROUP TO START

Any second grade girl interested in a new Blue Bird group which will be organized this fall is asked to call or see Mrs. M. C. Huggett, phone 6-9617, after July 25.

If you need money...  
a low-cost First National personal loan is as easy as this...

1 Go to your nearby First National Branch, and ask to see a loan officer. (You'll find him friendly, helpful.)

2 Explain your needs. (You might wish to consolidate debts, pay doctor bills or taxes, or have one of many other reasons to need ready cash.)

3 Arrange your own repayment plan. (Small monthly payments will be suited to your particular situation.)

4 You will receive cash, or have the loan credited to your account.

FIRST NATIONAL BANK  
HEPNER BRANCH  
OF PORTLAND  
"LET'S BUILD TOGETHER"

### More Washington Farm Lands to be Opened to Veterans

War veterans are offered priority in a current drawing for 81 full-time farm units in the South Columbia basin irrigation district near Pasco, Washington, it was reported today by the Oregon Department of Veterans' Affairs.

Veterans' applications must be submitted by August 1 to the office of the bureau of reclamation, Ephrata, Washington, to be included in the public drawing for the farms.

The farms, which lie about 25 miles north of Pasco, range in size from 65 to 135 irrigable acres and in price from \$1338 to \$8062. Most of the land is suited to the production of row crops such as potatoes, sugar beets and truck crops, as well as hay and pasture. The land will be irrigated by water from the Grand Coulee dam.

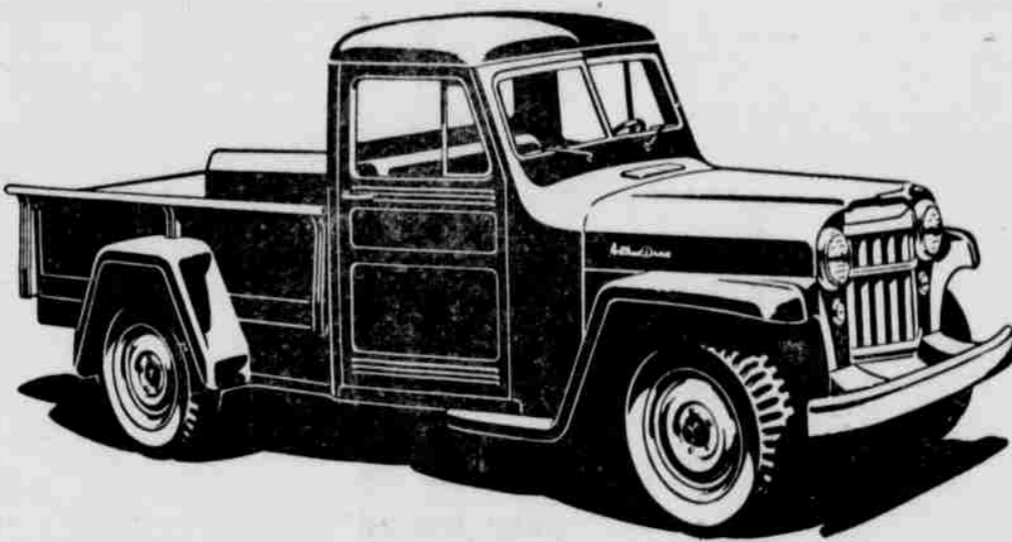
To qualify, applicants must have assets worth at least \$4500 in excess of liabilities, must have had at least two years of farming experience, and must intend to engage in farming.

Application blanks may be obtained in Oregon from county veterans' service officers or from the department of veterans' affairs, state finance building, in Salem, or state office building, Portland. They may also be obtained by writing the reclamation bureau at Ephrata.

### Morrow Picnic Stated at Portland

The annual Morrow county picnic will be held in Laurelhurst park, Portland, on Sunday July 31. The picnic will be held in the usual location, entering the park on Ankeny street and signs will show the way to the location.

The Grant county picnic will be held the same day at the same park.



## How the 'Jeep' truck makes your tough job easy!

#### THE WORLD'S MOST USEFUL TRUCK

Versatility. The 4-wheel drive 'Jeep' Truck does your tough jobs, regardless of road or weather conditions.



Selectivity. The 'Jeep' Truck shifts easily from conventional 2-wheel drive for normal highway driving into 4-wheel drive for tough going.



Traction. With the extra traction of 4-wheel drive, the 'Jeep' Truck climbs 60% grades, goes through mud, sand, snow or soft earth.



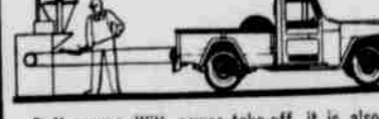
Hauling. The 'Jeep' Truck carries a payload 63% of its curb weight... up to 2110 pounds, including the driver.



Towing. With the extra traction of 4-wheel drive, it tows heavily loaded trailers, with special low gear range when needed.



Power. With power take-off, it also supplies mobile power for many types of equipment, such as welders, air compressors, generators.



Belt power. With power take-off, it is also a stationary power unit for many types of belt-driven machinery, such as hammermills.

#### LOWEST PRICED 4-WHEEL DRIVE TRUCK

Economy. The 'Jeep' Truck is America's lowest-priced 4-wheel drive truck. Its extra ruggedness assures low upkeep and long life.

## 4-WHEEL DRIVE 'Jeep' TRUCK

WILLEYS... world's largest makers of 4-wheel drive vehicles

Ask for a demonstration today!

FARLEY MOTOR COMPANY  
HEPNER, OREGON

**WHY**  
Does 'Northwestern' Have A Larger Run of Good and Choice Quality Cattle Each Week?  
The answer is because farmers and ranchers receive from \$1 to \$2 cwt. more for their stock at 'Northwestern' than in any other place or manner of selling.  
**WHY DO THEY RECEIVE HIGHER PRICES (AT LESS COST) AT 'NORTHWESTERN'?**  
The answer is because buyers in large numbers from a wide area recognize 'Northwestern' as a dependable source of clean sanitary, well-handled cattle.  
Consign Your Cattle to the Market Where Open Competition Among Many Buyers on Hand Assure You the Top Dollar

**SALE EVERY TUESDAY**  
12 NOON  
**NORTHWESTERN LIVESTOCK COMMISSION COMPANY**  
Hermiston, Oregon  
On U. S. Highway No. 30  
Frank Wink & Sons  
Don Wink, Mgr  
Ph. 6655 or 3111  
Si Williams  
Ph. 6532