

HEPPNER GAZETTE TIMES

MORROW COUNTY'S NEWSPAPER

The Heppner Gazette, established March 30, 1883. The Heppner Times, established November 18, 1897. Consolidated February 15, 1912.



ROBERT PENLAND
Editor and Publisher
GRETCHEN PENLAND
Associate Publisher



Published Every Thursday and Entered at the Post Office at Heppner, Oregon, as Second Class Matter
Subscription Rates: Morrow and Grant Counties, \$3.00 Year; Elsewhere \$4.00 Year. Single Copy 10 cents.

The Legislature Must Face It—

This paper wants to add a "second" to a statement made Tuesday in the editorial columns of the East Oregonian in which editor Bud Forrester called down members of the Oregon legislature for their recent attempt to table necessary legislation which would make funds available for the start of construction of the mental hospital in the Portland area.

We aren't going to go into a lot of details, for the EO editor has done that already, but we do believe in his thesis that the people have twice voted approval of such a hospital, therefore, it is now up to the legislature to find the money with which to build the needed facility.

We appreciate the legislature's position—that a great amount of money must be found to balance the state budget which does not include new buildings, yet, the people of Oregon have a right to expect that when they approve such a program as this, funds will be provided for its construction.

It has long been our belief that when such a measure as this hospital project is put on the ballot, it should include its own means of financing as an integral of such a measure. However, such a plan is not now a necessity in Oregon ballot measures, so the legislature is left the job of finding the money with which to build the plant. If

a tax plan which will raise the needed money is voted down by the people, then, and only then, will the legislature be off the hook.

The people have said a new mental hospital is needed and they have a right to expect the legislature to find a reasonable means of raising the money to build it. If such a means is referred to the people and defeated by them the legislature would have reason to table the proposal, but not until then.

Easter Seals Help Crippled Children

During the next few days almost every resident of this area will receive Easter Seals in the mail in the annual campaign sponsored by the Oregon Society for Crippled Children and Adults to raise funds for its humanitarian program. The drive opens today and will continue through Easter Sunday, April 10.

The society provides a variety of services to handicapped youngsters and adults to relieve their suffering and to return them to as near normal every-day living as possible. The society does not duplicate the services of any other organization, either public or private.

Give what you can . . . and remember—every Easter Seal you buy helps a crippled child.

From The County Agent's Office

By N. C. Anderson

Recently the U. S. Department of Agriculture and Pacific Northwest Crop Improvement Association released their wheat variety survey on the 1954 crop. It was interesting to note the various wheat varieties grown in Morrow County, their acreage and average yield. Rex still leads in acres here.

Morrow is the only county that seeds predominately to Rex wheat. Last year, 54,720 acres were seeded with an average yield of 21.1 bushels per acre. The next closest variety was Elmar with 32,590 acres. The yield of this variety was considerably higher, 27.2. Next in line in acreage was Turkey with 13,822, having the lowest yield of any of the varieties seeded. It yielded 18.3. Fourth in line was Orford with 9,900 acres, averaging 26.8 bushels. Fifth was Grevor with 8,080 acres yielding 21.2 bushels. Other varieties grown were Elgin, Pacific Bluestem, Idaed, Golden and Gold Coin, Federation, and Baart. All of these varieties produced 20 bushels or more to the acre with the exception of Pacific Bluestem which averaged 19. The highest yielding variety is Idaed with 29.3 bushels per acre.

Some big changes have come about during the past 15 years in farming. Beside all of the new chemicals, new varieties, and other scientific farming practices, big changes in farm mechanization has taken place. The farmer has become cost conscious. For instance, farm wage rates are four times what they were before the war while farm machinery prices are doubled. In comparison, gasoline and fertilizer prices show only small boosts. With this trend, farmers cut down on hired man labor and switched to mechanization, increased the size of the farm and use more fertilizer. This in turn upped farm

output. While in 1940, each farm worker produced enough food, fiber, and tobacco to supply himself and 10 other people, he now produces farm products for himself and 17 other persons.

Ranchers who have shown an interest in livestock feeding have become more numerous in the past year or two as feed prices have gone down and the price of fat cattle has stayed constant. Those who are interested might find some of the answers to the old questions of how to buy and sell feeder cattle for the best net returns. These and other problems of cattle feeding will be discussed April 13 at the Malheur feeders day near Ontario. Sixty beef animals on feeding and grading trials for the past five months will be on display. They represent five grades of feeders ranging from inferior grades up to choice. Each lot has been fed identical rations since November 18. The test is set up to compare dollar returns of the various grades under normal feeding conditions. One of the major objectives of the experiment has been to determine the best selling time for each of the five lots during the past few months. They have been weighed and graded every 28 days since last fall. Those in charge of the experiment say that some animals that will now grade prime for example, could have been sold earlier as high good or low choice, for the higher net profit. The public is invited to the April 13 program which starts at noon at the experiment station, five miles south and west of Ontario on the Vale highway.

On Thursday of last week, Charles Ross, state forester, Oregon State College, spent the day with the county agent and visited windbreak plantings that have

been made throughout the county during the past few years. The day was quite breezy and it was quite surprising to see the amount of protection the windbreaks were giving to some of the farms visited even though they had not been established for many years. There are several outstanding windbreaks, one of which will be found at the Glen Campbell ranch near Buttercreek. This contains four rows of trees. The first row of the rows on the windward side is Caragana, which is a low growing shrub type tree that is planted to stop ground winds. At this windbreak it is planted approximately two feet apart and has been pruned each year to form a dense growing shrub. The next two rows are Locust with one row of ponderosa Pine. In this windbreak, Mr. Campbell set out about twice as many trees as was necessary in order that he could grow enough for transplant to replace those trees that died. Since none died, he is removing excess trees each year. He will remove the second row of locust and transplant Ponderosa Pine, making a windbreak of one row of Caragana, one row of Locust and two Ponderosa Pine. While the windbreak has only gone through three growing year, it is well established and will soon be giving a lot of protection to the farmstead. A four row windbreak at the O. D. Nelson ranch, planted in 1949 is doing well too. The Caragana which was not pruned back is not forming the desired low bushy wind stopper, but will be pruned back to form this dense growth this spring. One row of Chinese Elm has been wonderful making a twenty foot growth in this time. The two rows of pine are beginning to show some good growth. At the John Proud-foto farm, a windbreak planting of Bladder Senna, American Plum, Russian Olive, Locust, and Pine has made an excellent growth in its four years. Promising windbreaks visited during the day were at the E. M. Baker and Donald Peterson farms.

(Continued on Page 8)

COUNTY COURT PROCEEDINGS

Court proceedings for the Month of February, 1955.

The minutes of the January, 1955 term were read and approved.

Neyt O'Harra was appointed to serve a 3 year term on the Budget Board.

Morrow County entered into an agreement for a permanent easement from the Union Pacific Railroad Co.

The Court ordered the treasurer to pay Ray L. Kalal the sum of \$2,237.59 and John E. Kalal the sum of \$2,450.00 from the Road Trust Fund for equipment rental on the Paterson Ferry road.

Lloyd Howton of Ione, Oregon was appointed to the Fair board.

The following Bangs disease claims were allowed: Jerry Brosnan \$24.00; Raymond M. Porter \$8.00; and Buford L. Whither spoon \$40.00.

The Court granted American Legion Post No. 95 of Ione a dance hall license.

Warrants Issued on the General Fund:

Sadie Parrish, Deputy	\$ 210.94
Sylvia McDaniel, Deputy	179.79
Joyce Buschke, Office Clerk	184.34
Olive B. Hughes, Deputy	250.94
Alice I. Soward, Field Work	110.74
A. J. Chaffee, Janitor	273.31
Dr. A. D. McMurdo, Physician	24.25
Herbert W. White, Jr., Court Reporter	72.75
J. O. Hager, Justice of Peace	150.15
Wm. E. Garner, Justice of Peace	72.75
Gas Fisher, Justice of Peace	24.25
Heppner Laundry, Court House, \$1.00; Jail 30c	1.30
Case Furniture Co., Court-house	1.15
Bureau of Labor, Court-house	3.00
C. J. D. Bauman, Sheriff	154.11
Arthur D. Jenkins, Field Work	93.00
H. Tamblin, Co. Surveyor	5.00
Kilham Stationer and Printing Co., Assessor incidentals	216.00
B. D. Fancher, District Attorney	13.82
Co. Clerks and Records Association, Clerk's incidentals	15.00
Annie Healy, Bangs disease Control	8.00
Ralph I. Thompson, County Court	80.64
Russell K. Miller, County Court	138.37
Northwest Hospital Service, Salaries	70.40
Heppner Laundry, Court-house	1.00
Lulu M. Hager, Registrar	30.00
Oregon State College,	

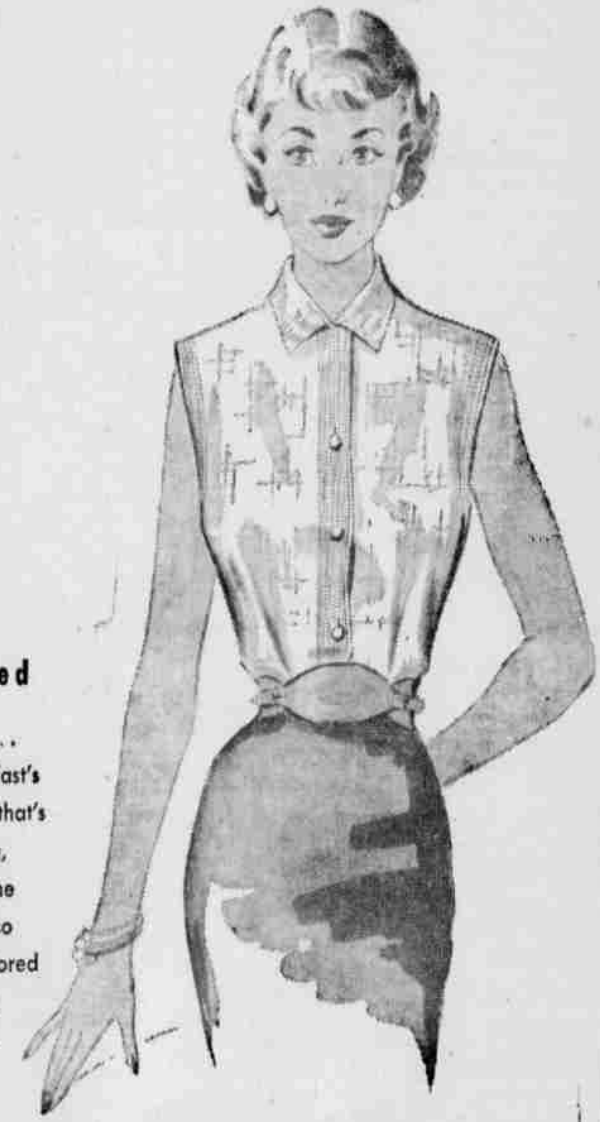
County & Home Demonstration Agent	3,960.00
B. D. Fancher, Dist. Attorney	31.00
Herman Green, Court-house	3.00
City of Heppner, Water Dept., Court-house	7.50
Pacific Telephone and Telegraph Co., Current Expense	81.58
C. J. D. Bauman, Sheriff	57.75
Harry Dinges, Assessor	52.57
Packer-Scott Co., Court-house	17.79
Nina Walker, Assessor	
Field Work	141.49
Alice Soward, Assessor	
Field Work	37.47
Herbert W. White, Jr., Circuit Office	14.75
Henderson Office Supply, Tax Collection	60.35
William Smethurst, Bangs Disease Control	36.00
Simmons Carbon Co.,	

Tax Collection	22.81
Henderson Office Supply, Sheriff	16.00
Oliver Creswick, Coroner	9.31
Svender Blue Print Co., Court-house	3.93
Heppner Gazette Times, Official Publication, \$42.90; Assessor \$42.00	84.90
Case Furniture Co., Court-house Repairs	144.35
Helen O'Donnell, District Attorney	20.00
Central Market & Grocery, Jail	36.95
Humphreys Drug Co., Assessor	18.03
State Industrial Accident Comm.	9.98
First National Bank of Portland, Salaries	382.40
Public Employees Retirement Board, Salaries \$79.80; Social Security \$228.36	308.16
Oregon State Highway Commission, Signs	98.28

Garnet Barratt, County Court	24.74
Pacific Power & Light Co., Court-house	54.93
Gilliam and Bisbee, Court-house	18.71
Jaynes Typewriter Exchange, Tax Collection	1.30
Dunham Printing Co., Clerk	39.15
Public Employees Retirement Board	23.10
Heppner Pine Mills, Jail	6.50
Thompson Photo Service, Sheriff	8.50
Association of Oregon Counties	153.78
Standard Stationery and Printing Co., Clerk	1.00
Jerry Brosnan, Bangs Disease Control	24.00
Raymond M. Porter, Bangs Disease Control	8.00
Warrants Issued on the General Road Fund:	
Frank Marlow	\$ 137.58

Continued on page 7

that
grabb
girl



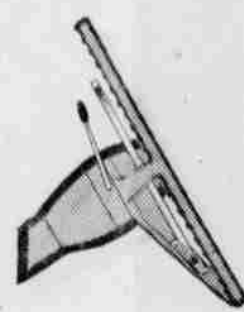
Is well dressed

In this sleeveless Shirt . . . of Sandringham—Everfast's wonderful rayon linen that's fast to sun and washing, crease resistant too. Fine stitching on collar and so expertly California tailored by Graff. Colors for all occasions. Sizes 32-40. Only 3.98. Other Styles & Fabrics 2.98 To 4.98.

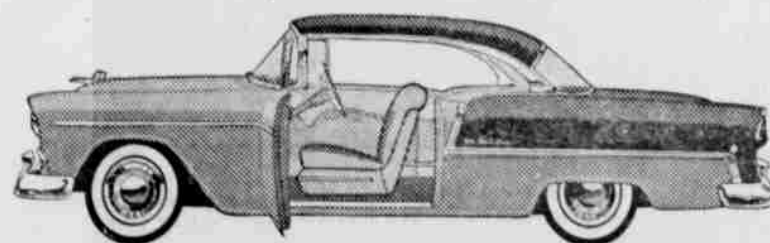
Wilson's Men's Wear

GRAFF CALIFORNIAWEAR

Put yourself in this seat



motoramic Chevrolet



COMPLETE and OFFICIAL figures show that again in 1954—for the 19th straight year—MORE PEOPLE BOUGHT CHEVROLETS THAN ANY OTHER CAR!

A demonstration drive can help you WIN one of 102 new CHEVROLETS plus a \$1,000 U. S. Savings Bond in our big MIRACLE MILE CONTEST . . . and you'll have the driving time of your life!

Come in and drive the Motoramic Chevrolet just for the fun of it. And when you do, you'll make discoveries that can help you be a winner in our Miracle Mile Contest. For example, you'll notice how exclusive Anti-Dive braking control lets you stop with far less lurching or diving. And you'll tingle to the peppery response you get when your toe nudges the accelerator. Come in and have the driving time of your life at the wheel of a new Chevrolet! Enter our big Miracle Mile Contest, without cost or obligation, and you may win one of 102 new Chevrolets given away.

STEALING THE THUNDER FROM THE HIGH-PRICED CARS! CHEVROLET

STAR THEATER, Heppner

Admission Prices: Adults 70c, Students 50c, Children 20c including Federal Excise Tax. Sunday shows at 2 p. m., other evenings at 7:30. Boxoffice open until 9.

Thursday-Friday-Saturday, March 31—April 1-2

THE ADVENTURES OF HAJJI BABA

In CINEMASCOPE DeLuxe Color. John Derek, Elaine Stewart, Thomas Gomez, Rosemarie Bowe. Desert, damsels and derring-do in the Arabian Nights-ish manner come up with an impressive quantity of good entertainment.

THE KID FROM AMARILLO

Charles Starrett-Smiley Burnette Western.

THREE DAYS—Sunday-Monday-Tuesday, April 3-4-5—THREE DAYS

WHITE CHRISTMAS

In VISTAVISION and Technicolor starring Bing Crosby, Danny Kaye, Rosemary Clooney, Vera Ellen, Dean Jagger. This one has everything! And you must SEE Vistavision to realize its beauty. 13 Irving Berlin tunes including "White Christmas" and "Count Your Blessings".

Sunday shows at 2 p. m., 4:26 and 6:50

Wednesday-Thursday, April 6-7

ATHENA

Musical comedy in Technicolor with Jane Powell, Edmund Purdom, Debbie Reynolds, Vic Damone, Louise Calhern, Linda Christian. Boy meets girl and nature does the rest—as satiric as "Seven Brides".

Fulleton Chevrolet Company