

# HEPPNER GAZETTE TIMES

MORROW COUNTY'S NEWSPAPER

The Heppner Gazette established March 30, 1883. The Heppner Times, established November 18, 1897. Consolidated February 15, 1912



ROBERT PENLAND  
Editor and Publisher  
GRETCHEN PENLAND  
Associate Publisher



Published Every Thursday and Entered at the Post Office at Heppner, Oregon, as Second Class Matter  
Subscription Rates: Morrow and Grant Counties, \$3.00 Year; Elsewhere \$4.00 Year. Single Copy 10 cents.

## He Lives Again on Christmas

Thirty years ago, on December 25, 1924 this editorial on the meaning of Christmas appeared in the Gazette Times. We believe it deserves republication today.

"The word Christmas originally was the name of a church service commemorating the birth of Christ. Because of the disparity of accurate historical data as to the exact date, early Christians observed the day at several different dates. There was considerable discussion of the accuracy of the date in the early centuries and some of that discussion occasionally crops out in our own day, but such a discussion is uninteresting and seldom taken seriously.

Today Christmas is not merely a word and a birthday. It is that and more. It celebrates the

birth of the Savior, it is true, but the word now typifies the whole life of service and good will of the Master. It is a spirit today. Unbelievers and skeptics accept the spirit of Christmas and reverence of the Golden Rule with those of the church. Christmas means a period of merriment and happiness, good cheer, and good will to fellow men.

The story of the manger, recorded 2000 years ago, has swept the world and the light of the Star of the East has penetrated the dark corners of the earth. The story lives as the classic of classics until today the civilized world uses its spirit as a foundation of ethical relationship.

During the year the significance of the babe in the manger may be crowded aside by the business of living, but at Christmas it is told afresh to all Christendom and its annual appeal does not diminish for He still lives.

## From The County Agent's Office

By N. C. Anderson

Officers and standing committee chairmen and vice-chairmen of the Oregon Wheat Growers League, with Presidents and vice presidents of the County Wheat Growers Associations, met on Monday and Tuesday of this week in Pendleton to set up their program for 1955. With Kenneth Smouse of Ione, as president, the executive committee has met twice since the annual meeting held in Portland in early December, and this group began action on recommendations made by wheat growers throughout Oregon at the 1954 annual meeting.

The two days were spent in a real work session with all resolutions passed at the last annual meeting reviewed and assignments made to carry through committee recommendations. A great number of committees resulted to carry out the requests of the wheat growers, as well as plans for contacts with state and U. S. Legislators, state and federal agencies and many others. Sub committees were appointed for over-all research and in carrying through the domestic parity plan which was designated as the number one project for the wheat league in 1955.

One of the difficult problems of

the group, was developing the Wheat League budget for 1955. This was especially difficult this year due to an approximate decrease of one third of the funds received by the Oregon Wheat Commission due to the reduction of wheat through acreage allotments. A number of projects that have been stated and considerable amount of money spent on, were felt necessary for continuing since such a good start had been made on them. Plans were made for a number of wheat growers to attend the National Association of Wheat Growers to be held at Amarilla, Texas, in early February. About fifteen wheat farmers will represent the Oregon Wheat Growers League at this important meeting.

Arrangements were made by Morrow County Wheat Growers Association to be host to the annual meeting of the Oregon Wheat Growers League at Pendleton on December 8, 9, and 10, 1955. Earlier representatives of the association, and of the Heppner-Morrow County Chamber of Commerce had investigated the possibilities of entertaining the league at Heppner. It was thought however, that since the league has grown so large in the

last few years, that it would be impossible to do so. The Pendleton Chamber of Commerce have pledged their support to the Morrow County Association in entertaining the group in their city.

Morrow County wheatgrowers who have assignments in various activities of the Oregon Wheat Growers League in 1955, are: Glen Campbell, Echo, vice chairman of the Taxation and Legislation committee; Donald Peterson, Ione, vice chairman Production and Land Use; Al Bunch, Chairman, Conservation Man of the Year program; and Oscar Peterson, Ione, member of the Columbia River Development committee. Kenneth Smouse of Ione, is president, and N. C. Anderson, Assistant to the President for the year.

Those attending the planning meeting in Pendleton this week, were Frank Anderson, President of the Morrow County Wheat Growers Association, Heppner; Kenneth Peck, Vice Chairman, Morrow County Wheat Growers Association, Lexington; Glen Campbell, past president; Al Bunch, Donald Peterson, Kenneth Smouse and the County Agent. Those attending were in agree-

## THIRTY YEARS AGO

From Files of the Gazette Times  
December 25, 1924

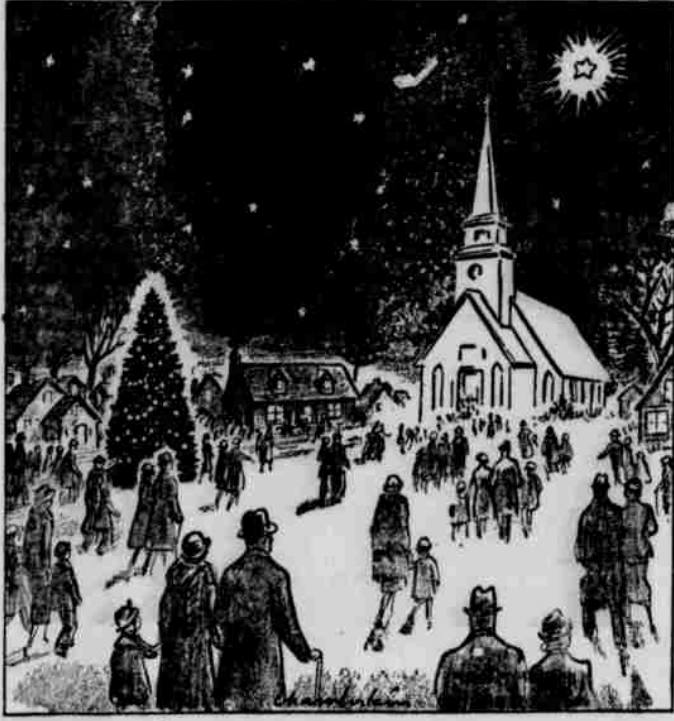
Registered from Hardman at O. A. C. this year is Adrian Bechtold, freshman in commerce.

Heppner is getting her share of the zero weather. It warmed up a bit Sunday. Monday the sun was bright and beautiful, but it keeps colder and the mercury is dropping all the while and hovering around six or eight degrees below during the nights.

Mrs. John Wightman and daughter Miss Anna, went to Portland on Saturday and will spend the Christmas holidays with Miss Bess Huddleston who is making her home in that city for the winter.

During the past week aprice of \$1.53 a bushel has been paid for western white wheat in Umatilla county.

Miss Leora Devin, who is a student at the state normal school at Monmouth, arrived home Friday to enjoy her holiday season with her parents, Mr. and Mrs. S. P. Devin.



ment that the Oregon Wheat Growers League is an effective organization in working out the problems of the wheat farmers.

Of considerable interest to the farmers of Morrow County is the announcement of supports for feed grains for 1955. In announcing the support program this week, Secretary Benson, called off all cross compliance requirements for the 1955 Agricultural support program. Oats, barley, and grain sorghums will be supported next year at 70% of parity instead of the 85% level now in effect. Oats will be supported at 61c a bushel, 14c less than this year. Barley will be supported at 94c, down 29c. Earlier the department announced that supports on 1955 crop wheat would be lowered no more than \$6.00 a ton.

For those of you who might be interested some interesting data has recently been published from a six year study on how the beef cow spends its working day. They found that the average beef cow has a 16.8 hour working day. Here is how she spends the time. Feeding, 10 hours; resting 4 1/2 hours; traveling 54 minutes; ruminating 49 minutes; drinking, 11 minutes; salting, 3 minutes. How much she travels depends on how big the pasture is. Observations were made on three different size pastures. In a 68 acre field, 2.8 miles were traveled, in a 200 acre field, 3.8 miles traveled per day and in a 400 acre field 4.1 miles traveled per day.

E. R. Jackman, Range and Pasture Management specialist from Oregon State college, points out that the distance of travel does not continue to increase as the pasture size increases. If it did, many of Oregon beef cows would spend the whole day loping across the range.

Oregon people last year received the highest income ever recorded in this state, both total and per capita. Income payments to individuals reached the record high of 2 billion, seven hundred, sixty-two million. Popu-

lation dropped off a little from 1952 to 1953 according to reports from the Bureau of Census. This gave an even greater slice to each person in the state. Per capita income in Oregon last year amounted to \$1,724.00. That was \$12.00 per person more than in 1952, and \$15.00 above the national average. Farm income presents a different picture. Cash receipts from farm marketing in Oregon, hit a peak in 1951. They went down in 1952 and again in 1953. When this year's figures are in the total will probably show farm income still tilting downwards. Based on figures of the first eight months of 1954, the money taken in by Oregon farmers, from the sales of their products, is running about 9% below the same months in 1953. Both crops and livestock shared in the loss.

As the end of the year draws near, income taxes are the foremost in the minds of our people. Whether they keep us awake at nights depends on the kind of records we have kept during the year. There are a good many of different kinds of record books

available. It little matters what kind are used as long as they are so designed to keep a good record and easily translated at the end of the year, in filing an income tax return. The Oregon Farm Record Book, complete with Farm Inventory Record Book, and the Oregon Farm Account Book, are records which are adapted to these musts. They are available at cost at the County Agent's office. A great number of them are distributed each year to Morrow County farmers. Roy Martin, of Lexington; Al Bunch of Heppner; and Hugh Brown, of Boardman, are looking ahead for the new year and have picked up record books at this office during the past few weeks.

Arrangements have been just completed for holding a series of meetings throughout the Columbia Basin to acquaint all wheat farmers with the various types of farm support programs and their effect on the income of the farmer as well as the cost to the

government and others. Oregon State College is sponsoring the meetings and are to be assisted by the local county wheat growers associations. They will be held during the week of January 17th. Four community meetings are planned for Morrow County in order to reach the greatest number of wheat farmers. The program is set up in such a way that a representative of Oregon State College might discuss all of these programs and their economic affects and give the farmers a chance to get together in groups to discuss each one and their desirable and undesirable points.

The County Agent's office would like to take this opportunity to wish everyone a very Merry Christmas and a Happy New Year.

Mr. and Mrs. Francis Nickerson and children of West Fir will arrive today (Thursday) to spend Christmas at the home of his mother, Mrs. Grace Nickerson.

## COME IN AND SEE THE GREAT ALL NEW 1955 Jeep

ADDED WIDTH • LENGTH  
STRENGTH • COMFORT

ALL NEW



MADE BY THE WORLD'S LARGEST MAKER OF 4-WHEEL-DRIVE VEHICLES

WILLYS MOTORS, INC., Toledo 1, Ohio

Farley Motor Company  
HEPPNER, OREGON

It's time to wish

# Every Happiness

to those we know and serve  
in this community.

THOMSON BROS.

## STAR THEATER, Heppner

Admission Prices: 70c, 50c and 20c including Federal Tax.

Sunday shows during December start at 4 p. m. Evening shows start at 7:30. Box office open until 9 p. m. Children's Free Christmas Show, December 18th at 2 p. m. No Show December 24th. Christmas Day and New Year's Day shows start at 4 p. m. GIVE STAR THEATER SCRIP BOOKS FOR CHRISTMAS \$2.50

Thursday, Dec. 23 and Saturday, Dec. 25—NO SHOW DEC. 24TH

TO MAKE YOUR CHRISTMAS VERY HAPPY WE HAVE CHOSEN TWO OF WALT DISNEY'S LOVELIEST FILMS:

### STORMY

The story of the thoroughbred with the inferiority complex, a handsome Technicolor live-action featurette.

### PETER PAN

By J. M. Barrie. You'll be swept away into a paradise of spectacle and song where adventure never ends. Even the songs are out of this world! Color by Technicolor.

This theater will be closed Christmas Eve, Dec. 24th, so that our employees may enjoy the holiday evening with their families. The show will start Christmas day at 4 p. m.

Sunday-Monday, Dec. 26-27

### REAR WINDOW

James Stewart, Grace Kelly, Wendell Corey, Thelma Ritter, Raymond Burr. A knockout of a suspenseful comedy-drama. Another superb Alfred Hitchcock production and the "Master" and his splendid cast are in fine form.

Sunday shows at 4 p. m., 6:20 and 8:40

Tuesday-Wednesday, Dec. 28-29

### ROGUE COP

Robert Taylor, Janet Leigh, George Raft, Steve Forrest, Anne Francis. This cops-and-robbers story is so round, so firm, so fully packed with entertainment that everyone will be entertained.

Best wishes  
for a  
Happy  
Holiday  
Season

UNREIN  
MOTOR  
SERVICE

Merry Christmas Everyone!

Best Wishes  
for a good Christmas  
and a Happy New Year  
from  
your friends and neighbors  
of the  
Pacific Power & Light Family