

From The County Agent's Office

By N. C. Anderson

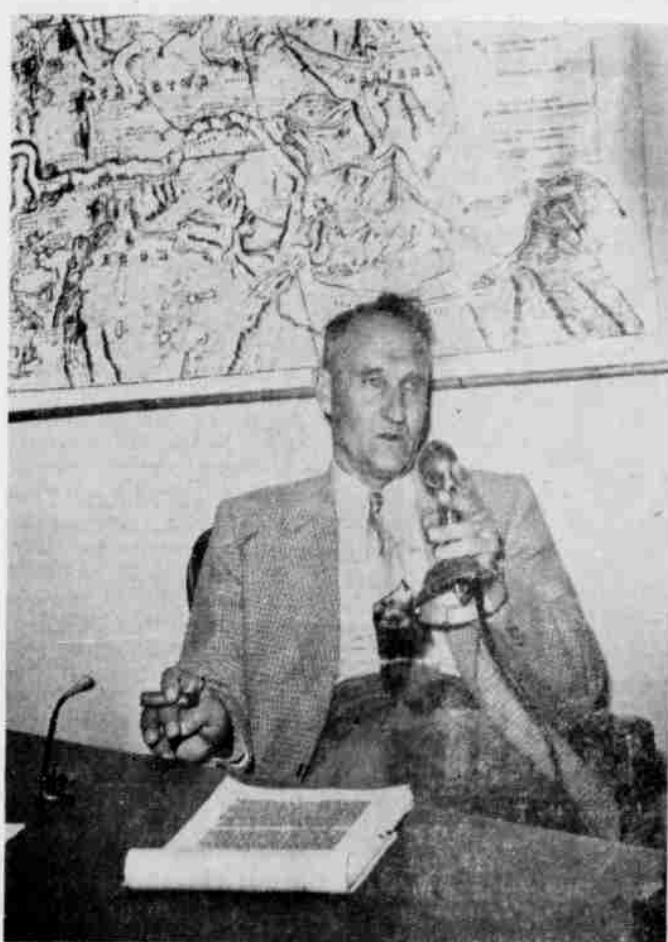
The national wheat acreage allotment for the 1954 crop has been set at 62,000,000 acres. August 14 has been set for the referendum for the wheat growers to vote on marketing quotas for the 1954 wheat crop. Quotas will not become effective unless two-thirds of the growers voting approve their use. Growers with more than 15 acres planted to wheat and with a normal production of 200 bushels or more are subject to the quotas and can vote. If quotas are approved, price supports for the 1954 wheat crop will be available to cooperators at 90% parity. If growers do not approve quotas, price supports will drop to 50% of parity.

The senate, this past week, approved the signing of the International Wheat Agreement for the United States. Other nations had until this week to ratify their agreement. The new agreement will run for three years starting August 1.

With acreage allotments and marketing quotas now a reality, it is time to be thinking of uses for diverted acreage. My guess is that not much grass will be seeded on the diverted acres until farmers find out what kind of a program is in the offing after July 1, 1954 when our present farm program expires. Many think that a two price type of wheat program will be in effect. Many then are thinking of crops such as barley to seed on diverted acres in 1954.

A recent report in this column showed comparisons of barley at the Sherman Branch Experiment Station at Moro pointed out that spring seeded barley has far out-yielded fall seeded varieties. There appears to be a pretty fair supply of spring barley available if it is purchased now. Fall varieties are very scarce. While there is a considerable amount of seed available now, it is disappearing due to the tight storage situation. Much of it is being disposed of on the open market for feed purposes. During the past few days, several sources of Flynn Selection 37 have been located. This is a spring variety that has been a high yielder at the Sherman Branch Experiment Station. It is a bearded variety with smooth awns and consistently the highest yielding there. R. J. Bruckert of Moro has about 50 acres of Flynn Selection 37, which he is now harvesting. His phone number is Moro 417. Lester Barnum of Grass Valley is harvesting 210 acres of Flynn Selection 37, now. His telephone number is Moro 234. Blaine Miller of Moro also has some Flynn Selection 37. All of these growers are selling seed directly from the combine.

The Experiment Station at Moro has at least 200 bushels of Meloy that they would save for us if anyone would like to purchase it. Meloy is beardless and is excellent for hay purposes. It yields about six to eight bushels less than Flynn. I would suggest that anyone who is interested in



NEWEST OFFICER of the Inland Waterways Association is Al Moltke, vice president and logging manager of Pilot Rock Lumber company, Pilot Rock, whose appointment as regional county vice president for Umatilla county was announced this week by Herbert G. West, executive vice-president of the association, which is virtually interested in the development of improved river navigation, harbors, irrigation and flood control.

seed barley make some contacts with these growers as they will be able to buy barley a lot more reasonable now than later on and be sure of a supply which cannot be guaranteed as the demand strengthens.

July 19-25 is the tenth annual National Farm Safety Week as proclaimed by President Eisenhower. One of the commandments emphasized during the week is "operate tractors safely". It is estimated that about seven hundred tractor accidents last year resulted in death. Here's a safety tip from your county extension agent. When operating your tractor, be sure to turn corners slowly. Avoid ditches, banks and soft ground, and always hitch to the draw-bar. Observe National Farm Safety Week, July 19-25, 1953.

On June 30, the Tri-County Weather Research Association held their annual meeting. As previously reported in this column, it was attended by about twenty Morrow county farmers, this year. The program was excellent. Dr. Schaefer, General Electric chemist who has been in charge of Project Cirrus for about thirteen years, gave a talk that left no doubt in anyone's mind as to the practicability of cloud seeding as a means of increasing rainfall. It is so positive that General Electric discontinued experiments about three years ago on artificial nucleation. They are now spending millions of dollars on the types of clouds, their occurrence and make-up which affects the way that they must be seeded to increase the natural precipitation. Dr. Schaefer made a statement that it was entirely

in the hands of the cloud seeding contractor on the percent of efficiency which was derived through the program. His talk implied that there are efficient and inefficient contracting organizations now in the field of cloud seeding. Those present at the annual meeting voted 100% to continue a cloud seeding program for 1953-54. Directors were elected to represent each of the three counties in carrying on this work. Morrow county's directors include Ralph Crum, Ione; Harry Duvall, Heppner; and Van Buskirk, Echo. Van Buskirk replaces Delvin Nelson who has served the past year. By electing these directors, the farmers have obligated themselves to support the program which they asked to be carried on. Tri-County Weather Research is being watched by many a state, it being one of the first, and one of few to have an evaluation program in effect in its contract. Oregon State College has been conducting the unbiased evaluation. Indications at the annual meeting were that newer methods that were sure to be more efficient are being developed through experience in an evaluation method. Everyone concerned with cloud seeding had nothing but praise for the type of a program which our organization is carrying out. Within the next few days, all Morrow county ranchers will receive a letter in the mail asking farmers to signify their wish as to whether the program should continue, and to indicate whether they will support such a program. Through such indications, the directors will know whether to continue with the program with Sherman and Gilliam counties. They will need to know by August 2 whether or not our farmers are

Farm Machine Checks Advised For Safety

Oregon farmers are reminded that July 19 to 25 is the 10th annual National Farm Safety week. M. J. Huber, Oregon State college extension agricultural engineer, says keeping machines in good repair is one of the farm safety commandments.

Keep machinery in safe working condition by constantly checking its operation and make sure all safety guards are in place, advises the specialist. Other safety precautions are to stop machines before oiling, unclogging or adjusting them.



SOUTH HEPPNER LIVESTOCK CLUB

The South Heppner 4-H Livestock club held its annual picnic in the mountains on Jug creek Sunday, July 19. Most of the members and their parents were present. We were glad to have our newest member, Kit George, present. Our next meeting will be held at Kit's home on August 9.

Janet Wright, reporter

CHURCHES

IONE NAZARENE CHURCH

Rev. Harold Gilliam, Pastor
Sunday school at 10:00 a. m.
Morning worship service at 11:00 a. m.
Evening services start at 8:00 p. m.
Prayer meeting Thursday evening at 8 p. m.
You are welcome to all these services.

ALL SAINT'S CHURCH

Episcopal
John R. Reeves, Rector
8:00 a. m. Holy Communion

going to support the program in planning the contract and continuance of the program which the group sees best fitted for our conditions. Morrow county farmers owe it to the directors they have elected to stand behind them or to indicate that the program should be discontinued.

9:45 a. m. Church school
11:00 a. m. Morning Prayer
7:00 p. m. Young People's Fellowship
First Sunday of Month—Choral Holy Communion
Wed. 10 a. m. Holy Communion
Wed. 4:00 p. m. Junior Choir
Thurs. 8:00 p. m. Choir practice

CHRISTIAN CHURCH

Earl L. Soward, pastor
Bible school begins at 9:45. Classes for everyone, including adults.
Morning worship at 11 a. m. The evening services, which are to be at 8 o'clock will be held in the basement if it is hot weather.

VALBY LUTHERAN CHURCH

There will be services at the Valby church in Gooseberry on Sunday, July 26, at 11:00 a. m. They will be conducted by Dr. Henry J. Hokenson of Portland.

USE GAZETTE TIMES CLASSIFIED ADS

HAVE "WORRY-FREE" VACATIONS

While you are on vacation. In the U. S. or Canada. Why not have insurance on that Still or Movie Camera?

On the very same floater. You may include Jewelry, Guns or sports equipment; As for Fishing & Archery!

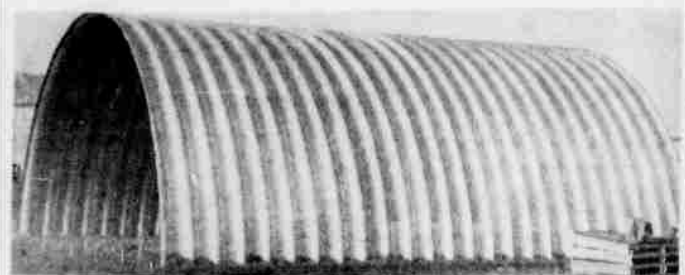
This "All-Risks" kind of policy Protect you anywhere. And covers almost everything! But normal wear and tear!

hr

For All Your Insurance Needs
C. A. RUGGLES
Phone 6-9625 Box 611
Heppner, Oregon

Wonder Steel Buildings

18 Ga. Galv.



FOR GRAIN STORAGE AND GENERAL PURPOSE

Just set building base in concrete. No anchor bolts. No framework. Just bolt sheets together. It is that simple. We invite you to investigate and compare. Widths 40', 50' and 60'. Lengths 2' sec.

PRICEWISE OR OTHERWISE
WRITE OR CALL

East Oregon Metal Building Co.

RTE. 2, BOX 67—PHONE 942

S. W. end of Court Place

Pendleton, Ore.

Lawn Furniture

TO HELP YOU

Enjoy Summer Days

METAL

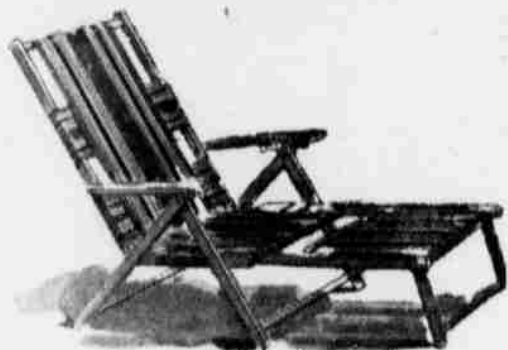
Chaise Lounge

39.⁵⁰



LAWN CHAIRS

FROM 3.⁹⁵



Children's Sizes From 2.75



BAR-B-Q NEEDS

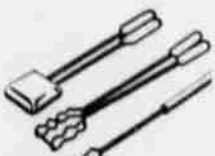


PORTABLE

Bar-B-Qs

BAR-B-Q TOOLS

10 LB. BAGS CHARCOAL



Case Furniture Co.

The Buy that saves you
MONEY...
When you buy it... While you drive it!



Aero-Lark 2-Door

Aero-Lark helps pay for itself with extra low monthly payments... extra low maintenance... exceptionally low gas costs. Ruggedly built with the luxury of an airliner, it's styled to stay new... built to last.

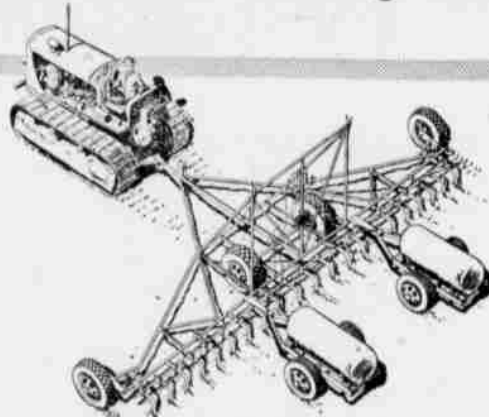
\$1499.⁵⁰

Aero
Willys

Farley Motor Company

HEPPNER

For maximum yield of GRAIN invest your fertilizer dollars in SHELL NH₃ SERVICE



Fertilizer is an investment. And some fertilizer investments pay better than others. So make sure you get full value from every dollar you invest in fertilizer. Invest in Shell NH₃ Service—the complete fertilizer service that combines the ideal nitrogen fertilizer with scientific application.

No one else offers you fertilizer service like this!

- Complete service (a phone call does it all)
- Backed by 20 years of experience and over a half million applications
- Has increased cash value of every major crop grown in the West
- No need to tie up money in application equipment (Shell NH₃ dealer furnishes)
- No money tied up in fertilizer "inventory." Billed only for the amount that is applied, and when it is applied
- Provides nitrogen at low cost
- Little or no labor for you and your help
- Assures scientific application

INLAND CHEMICAL SERVICE

Condon—Ph. 422 :: Heppner—Ph. 6-9112

