

**COURT PROCEEDINGS**

Continued From Page Two

George L. Snider, Bangs' Disease Claim	24.00
C. W. Barlow, Current Expense	11.00
Witherell & Witherell, Accountant - Audit, \$850.00; Tax Collection, \$100.00	950.00
Josephine Rands, Election	13.80
Madge Bishop, Election	13.80
Daisy Gillespie, Election	13.80
Lucille Walker, Election	13.80
Evelyn Black, Election	13.80
Walter W. Wright, Election	9.00
Henry Knighton, Election	9.00
M. F. Cork, Election	9.00
Jess Coats, Election	13.00
H. C. Lesley, Election	9.00
H. E. Clark, Election	7.20
Mary Beckner, Election	7.20
Geo. N. Ely, Election	7.20
Elaine O. M. Rietmann, Election	7.20
Mabel Cotter, Election	7.20
E. R. Lundell, Election	14.40
Carl P. Linn, Election	10.80
Gladys L. Drake, Election	10.80
Juanita Melena, Election	10.80
Helen McCabe, Election	10.80
R. V. Jones, Election	8.40
Lloyd M. Berger, Election	21.40
Mildred B. Fisher, Election	7.20

Lola Bennett, Election	8.40
Sadie Parrish, Election	8.40
Ruth McMurdo, Election	8.40
Grace O. Nickerson, Election	7.20
Sara E. McNamer, Election	7.20
Della Davidson, Election	11.40
Plato H. Cosner, Bangs' Disease Control	15.60
Cornelius McLaughlin, Bangs' Disease Control	8.00
Greenfield Grange No. 579, Election	8.00
Tum-A-Lum Lumber Co., Courthouse, \$283.66; Fuel, \$550.00	833.66

**Premium Priced Beef No More Nutritious Says Home Specialist**

There is no relationship between nutritive value and grade in beef, according to Agnes Kolshorn, extension nutrition specialist at Oregon State College.

When the housewife pays a premium price for the higher grades of beef she actually isn't getting any more nutrition than she would if she bought the lower grades, Miss Kolshorn points out.

Several things may be checked to determine tenderness of beef. Grade and cut give an indication of probable tenderness. Rib and loin cuts of U. S. prime and choice grades are ordinarily tender. Fine textured, lean meat that has red, porous bones and is well marbled with fat will usually be tender, explains Miss Kolshorn.

There are several cuts, less expensive than round, that the homemaker may use for grind-

**College Extension Program Is Model**

The extension service program of Oregon State college is being used as a model for establishing modern extension organizations in several South American countries, according to F. L. Ballard, associate director.

Educational procedure, philosophies, and organization of personnel and work projects of the OSC program are serving as guides for the South American work, Ballard said. They are based on a case study of the Oregon extension set-up made by the U. S. department of agriculture last year.

The Oregon study is being used by the USDA's office of foreign agricultural relations in helping South American countries establish more effective systems of extension education in agriculture and home economics.

A report of the study has been translated into Spanish and was used recently in setting up a training course for representatives of South American countries at Montevideo, Uruguay.

U. S. inspection stamp is required for each 1 1/2 pounds.

**Warrants Issued on the General Road Fund:**

Guy Hastings	\$ 251.00
Jack Slocum	326.68
William C. Heath	342.22
Carl Vincent	331.05
W. Cunningham	351.07
George A. Stalcup	271.67
Thorai Broadus	314.06
Anderson Hayes	231.63
Donald Munkers	224.15
Lewis Ball	341.89
H. Sherer	361.88
Walter Gilman	275.73
Fred Booker	280.20
Ray Bailey	296.28
Dean Gilman	308.28
Harold Wilson	349.06
Ralph Scott, Jr.	319.13
Austin Wilson	265.83
Laurel Wilson	275.73
George Irvin	303.73
Dick Borman	317.48
Public Employees Retirement System	90.21
Anderson's Builders Supply	2.13

**Warrants Issued on the General Road Fund:**

Western Auto Supply	\$ 8.17
City of Heppner, Water Dept.	17.55
Northwest Hospital Service	100.45
Industrial Air Products Co.	8.25
Omar Rietmann	7.43
Paul G. Pettyjohn	249.82
Boardman Supply Co.	6.35
Packer-Scott Co.	2.60
Pacific Power & Light Co.	9.61
A. B. Palmer	3.50
State Industrial Accident Commission	179.89
D. H. Jones and Son	272.38
Nelson Equipment Co.	316.87
Nelson Equipment Co.	7.78
Pendleton Grain Growers, Inc.	9.73
Industrial Air Products Co.	19.43
Empire Machinery Co.	142.08
Columbia Equipment Co.	12.07
Union Oil Co.	1855.45
Wood Tractor Co.	54.99
Jack Van Winkle	60.84
Sunset Motor Co.	232.47
Rosewall Motor Co.	38.25
Rosewall Motor Co.	35.32
Heppner Auto Parts	125.51
Heppner Lumber Co.	574.79
Northwest Industrial Laundry Co.	11.82
J. P. O'Meara	30.00
English and Co.	220.05
Pendleton Auto Parts	137.58
Foster Motor Co.	7.55
Allen Service Station	115.07
Tum-A-Lum Lumber Co.	5.25
Northwest Industrial Laundry Co.	8.34
Russell Olsen Construction Co.	5000.00
Gene Cutsforth	180.00
Fulleton Chevrolet Co.	150.12
C. W. Barlow	3.00
Perl Akers	45.00
Clyde Equipment Co.	1476.20
W. F. Barratt	64.90
Farley Pontiac Co.	450.00
Black Mountain Lumber Co.	597.76
Empire Machinery Co.	3097.50
Umatilla Electric Co-operative Assn.	6.05
Harold Wilson	60.00
Lexington Implement Co.	1958.42
Tum-A-Lum Lumber Co.	306.18

**Warrants Issued on the Miscellaneous Fund:**

Harold W. Dobyns, Rodent Fund	\$91.70
Robert Blanchette, Coyote Bounty Fund	6.00
Harold Dobyns, Coyote	

**Do Your GIFTS GALORE Xmas**

**Shopping at Gonty's - FOR - RADIOS**

- PORTABLES
- CLOCK RADIOS
- CONSOLES
- TELEVISION



**COLUMBIA - 4-STAR - MGM MERCURY AND RCA RECORDS**

**8 GIVE Electrical gifts**

- AUTOMATIC COFFEE MAKERS
- TOASTERS
- WAFFLE AND SANDWICH MAKERS
- MIXERS - IRONS
- ELECTRIC BLANKETS, SHEETS, COMFORTERS
- HOT PADS

**NEW STYLES Shoes For All LADIES' NYLON HOSIERY, SOCKS, ANKLETS, GLOVES AT-**

**GONTY'S**

**Give Him A STETSON Hat Certificate 10.00-12.50 WILSON'S MEN'S WEAR**

The Store of Personal Service

Long Distance Nation-Wide Moving Service  
Mayflower Agents Padded Vans  
Penland Bros. TRANSFER CO.  
Pendleton, Oregon Phone 338

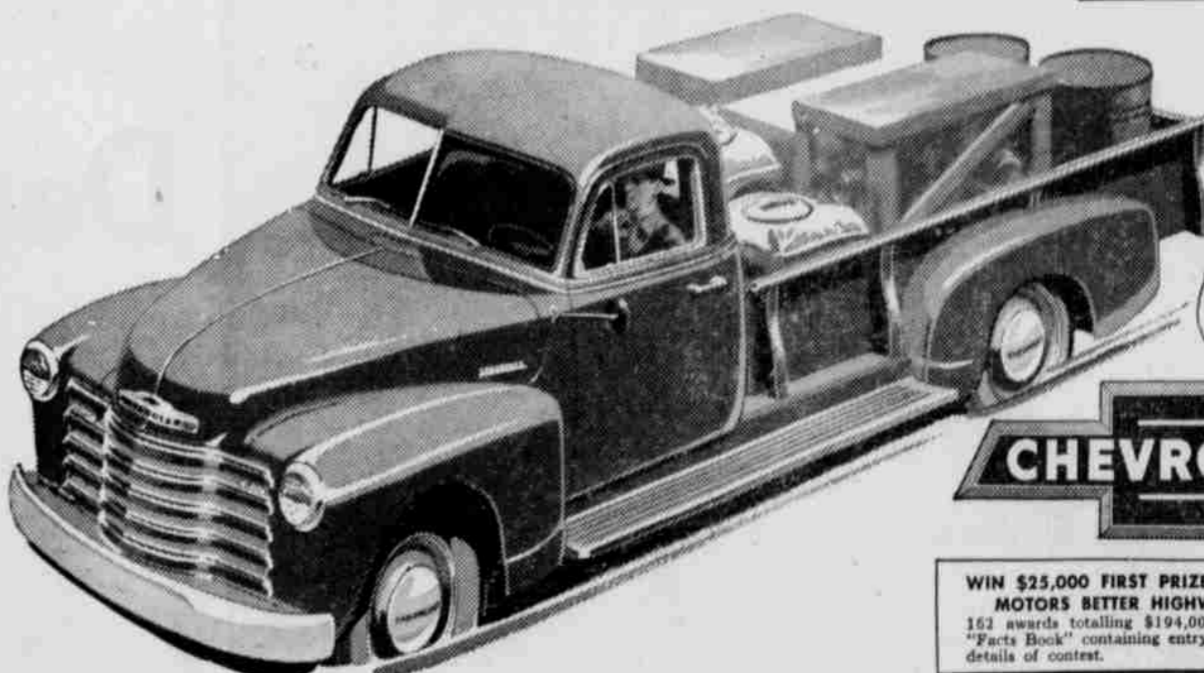
**BLITZ WEINHARD FOR ME!**



BLITZ WEINHARD COMPANY PORTLAND, OREGON

**Better Deal and a Better Buy**

with Chevrolet trucks!



(Continuation of standard equipment and trim illustrated is dependent on availability of material.)



WIN \$25,000 FIRST PRIZE IN THE GENERAL MOTORS BETTER HIGHWAYS AWARDS 162 awards totalling \$194,000. Come in for free "Facts Book" containing entry blank and complete details of contest.

**Fulleton Chevrolet Company**

**A better buy because . . . THEY LIST FOR LESS**—Large volume production economies let Chevrolet trucks list for less than comparable models of any other make.

**LOWER OPERATION AND MAINTENANCE COSTS**—Valve-in-Head engines, Hypoid rear axle, channel-type frames, Flexi-Mounted cabs and many other Chevrolet features assure you lower over-all costs.

**TRADITIONALLY HIGHER TRADE-IN**—Chevrolet trucks keep their value longer—a wonderful dollars-and-cents plus at trade-in time.

**A better deal because . . .** Chevrolet trucks list for less . . . bring you important on-the-job economies.

**Better Buy Now!**