

## From The County Agent's Office

By N. C. Anderson

This week's column is being written from Buffalo, South Dakota. We've covered a lot of miles during the week and are glad that we will soon be able to stop for a few days to visit. Today we get into the two counties where I spent several years as County Agent and want to spend some time visiting friends.

Rain, rain, rain—it has rained enough in the last two days and nights to last Morrow County for a year. It started raining in Yellowstone Thursday night, rained all through Wyoming and South Dakota and it is still raining this morning as we leave South Dakota. It appears that it is doing no good this late as the dry spring continued too long for the rains to benefit the crop. Yesterday there were many grain fields being pastured as they were no good for harvest.

We're still looking for anything as good as the crops in Morrow County. We haven't seen a good field of wheat since leaving.

Continuing with results revealed at the Field Day at Moro the week before last, it is timely to discuss wheat varieties this week. We hope that this information will be helpful to you in deciding the variety you want to seed this fall.

At the Station, new varieties are developed and first tested in the cereal nursery. Later the promising varieties are tested in field plots before being released as recommended varieties. In developing new varieties particular attention is paid to disease resistance, stiffness of straw, shatter resistance, and for winter varieties, winterhardness. The final criterion, which is the sum of all other qualities, is the new variety's yield as compared to established varieties.

The Sherman Branch Experiment Station has an excellent record in the development of new

## 575,000 4-H'ers Get Training to Cut Farm Accident Toll



Farm safety surveys made by 4-H'ers show that matches within reach of small children and stairways littered with toys, jars and other articles were much in evidence as fire and accident hazards in rural homes.

Chicago—(Special)—More than 575,000 4-H Club boys and girls throughout the nation are receiving training in farm accident and fire prevention this year. The outstanding feature of this training in the National 4-H Farm and Home Safety program is to check and remove from farms and homes any conditions likely to cause fire, accidents or injuries. These 4-H surveys are acclaimed a valuable contribution to the nation-wide campaign to reduce the annual toll of 15,000 farm people dying and 1,300,000 being injured as a result of rural accidents each year.

Here is a report, made by a 4-H girl on behalf of her local club, after making a safety survey of every home in the community: "In all homes having stairways that we visited, the stairs were full of toys, jars, tools and other articles," she stated. "In many homes people used kerosene to build fires. They also had oily cloths and papers stored close to the stove and flue. Matches and unlabeled bottles of poisonous

liquids were within reach of small children.

"On several farms visited, boards with rusty nails pointing upward were much in evidence. In our local schoolhouse, the ceiling plaster in the classroom was loose. If it fell it would cause severe injuries to the pupils.

"After we had made our survey, we called a community meeting. Attention was called to the hazards we had found. Immediately following the meeting everyone present began work necessary to make our community a safe one. Every hazard we had found was corrected."

Medals of honor are presented to five county winners having the best 4-H records in safety work, and a trip to the National 4-H Club Congress in Chicago is awarded to the State champion. Eight of the latter will be selected as national winners, who will each receive a \$300 college scholarship. Awards are provided by General Motors for the eighth consecutive year. The program is conducted under the direction of the Co-operative Extension Service.

spring seeding is practiced.

Annual average yields of winter wheat varieties at Moro, using the last five years average, show that Elmar is the top yielder with 35.6 bushels; Brevor comes next with 33.4; Elgin with 31.7; Rex, 28.0 bushels; Orfed, 27.4 bushels; Rio, 25.0 bushels; and Federation, 13.7 bushels. Federation's low yield is contributed to winter kills in 1949 and 1951.

Seed certification has been completed on Rex, Elmar and Brevor varieties in Morrow County and there are several sources of good clean Orfed in the County. Anyone interested in information for obtaining seed of the recommended varieties may drop in at

## High School Driver Training Praised

The governors of all 48 states have endorsed high school driver education, according to an announcement received at Oregon State Motor Association headquarters, Portland.

The announcement was received from the American Automobile Association, which has issued a booklet with remarks of the governors. The AAA says high school driver education is considered the traffic safety program holding

the County Agent's office. I am sure someone can help you.

the longest long-range promise, that it is strongly favored by the parents once they know about the program, and that it is immensely popular with students.

Governor Douglas McKay of Oregon says, "Probably no activity in improving highway safety is more productive than the Driver Training education in high schools. This trains the driver who is just forming driving habits in the proper way to handle a motor car. It installs in him not only the correct mechanical habit of driving but gives him a correct mental attitude towards the rights of others."

NEED Letterheads, Phone 882

where *Quality* counts

**BOOTS BY HYER**

32.00

The vamp and leg of this dress boot is of fine black calf, and it has been trimmed with black beading, white inlays, staddle fork ears, beaded side seams, and three rows of rich silk stitching. This is one of the beautiful boots that Hyers designed in honor of their 75th Anniversary.

**GONTY'S**

Know your OREGON MILK CONTROL LAW

"Are you telling ME... the state dictates WHO may produce milk and HOW MUCH?"

Yes

No farmer can sell milk for home or restaurant use without permission from the Milk Administrator.

Milk Control decides how much milk will be available for your use.

It picks out which—if either—of two neighboring farmers can sell their milk even though both may be equally able to produce wholesome Grade A milk.

If Milk Control permits either of them to produce such milk, it then tells each farmer how much he may provide for your use.

This powerful, single control over Oregon's milk supply is called the "quota system."

If a farmer's cows forget this, get out of line and produce more than the quota picked for him, he must take whatever price he can get some other way—such as selling it at much lower prices for cheese, powdered milk, and the like.

Not Oregon's producers, but the State, decides exactly who will produce the milk for our needs and how much each farmer can produce. Such limitations frequently have made it necessary to depend upon the uncontrolled Washington market for enough milk, instead of our own Oregon farmers.

### Shop Safeway... for fine foods at everyday low prices

The questions and answers below show some other ways in which Oregon Milk Control affects YOU.

- Q. Does Milk Control hold prices up?
- A. YES. That is the purpose for which the law was designed. It sets floor prices, not ceiling prices.
- Q. Does Milk Control discourage competitive distribution of milk?
- A. YES. No one can enter the milk business if the Administrator says such new competition might disturb existing distributors.
- Q. Does Milk Control allow you a lower price when you carry milk home yourself?
- A. NO. You pay the higher costs of door-to-door delivery whether you use this service or not.
- Q. Does Milk Control limit the richness of milk?
- A. YES. The richness (butterfat content) of milk sold in each price range is limited by the rulings of the Milk Administrator.
- Q. Does the Oregon Milk Control Law regulate Sanitary conditions?
- A. NO. It has absolutely nothing to do with the sanitation, health inspection, cleanliness, or the purity of milk.



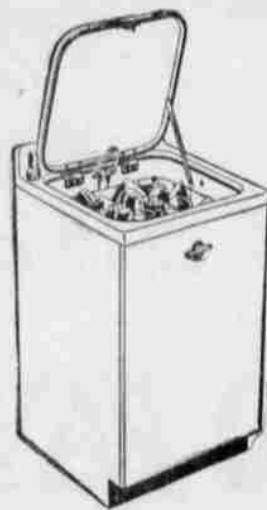
**SAFEWAY**

Where you always get more for your money

## Get Out FROM UNDER

That Stack of Pots and Pans And Dirty Dishes

IT'S EASY WITH A General Electric AUTOMATIC DISH WASHER



32895

Washes, rinses, dries dishes pots and pans, silverware—all automatically. High wash-rinse temperatures; famous Calrod heating element gives extra heat for super dishwashing results. Wash action regulator provides uniform "spray-rub" action. Heated air is circulated over dishes for quick drying.

Low Down Payment Easy Terms

Heppner Hardware & Electric

varieties. It has been responsible for the release of many varieties. Among those which are still recommended are: Rio, Golden and

Rex winter wheat; Federation and Hard Federation 31 spring wheat; Meloy and Flynn 37 spring barley; and Carlton and Markton spring oats.

Recommended varieties of winter wheat for our area are: Elmar, Brevor, Rex, Rio, Golden and Orfed. Elgin is being replaced by Elmar, but it is recognized as a good variety where smut has not been too great a problem. Brevor will replace Rex as seed becomes available, and is recommended for drier localities where taller straw than Elmar is desired. Golden and Orfed are varieties which seem to be very localized in adaptation. Golden is not too popular with farmers in Morrow County due to its characteristic to shatter badly. Orfed has pretty well established itself in the North Ione area, some to the south of Ione and more to the far north near the bombing range running to Butter creek. While Golden is recognized as unsatisfactory in smut resistance, shattering, and lodging, it is the highest yielder in southern Morrow County. Orfed is a variety which can be sown either in the fall or spring and is advantageous where late fall seeding or early



What gives Olympia rare flavor?

Centuries of brewing experience have shown that certain waters have a more solvent quality than others to extract rare and desirable flavors from the hops and grains, and impart them to the beer. Our subterranean water proves how this faultless brewing water produces an outstanding beer.

"It's the Water"



Light Refreshment Beverage of Millions of Temperate People

OLYMPIA BREWING CO., OLYMPIA, WASH., U. S. A. Trade Marks Reg. U. S. Pat. Off.

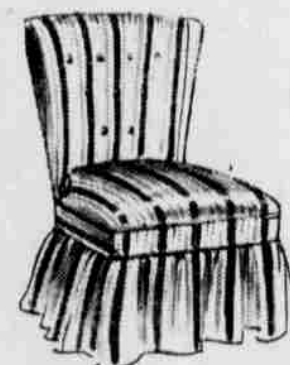
## A BIG NEW SHIPMENT CHAIRS

- SWING ROCKERS
- OCCASIONAL CHAIRS
- CRICKET CHAIRS
- SLIPPER CHAIRS
- CAPTAIN'S CHAIRS



ALL COVERS, COLORS AND PATTERNS

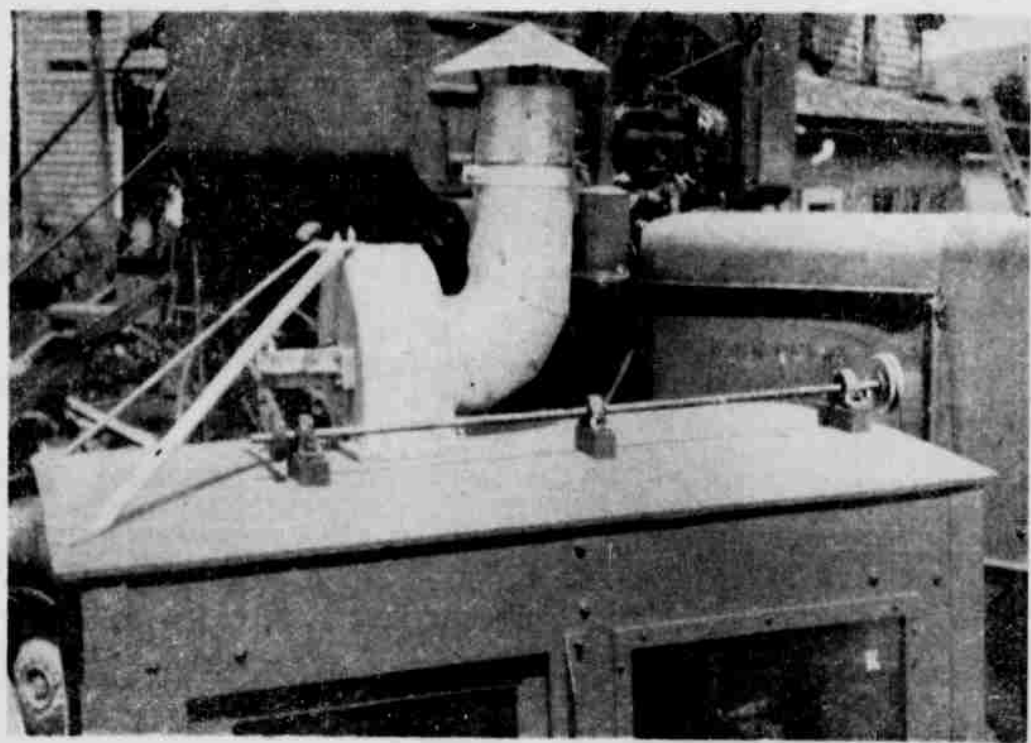
A whole host of brand new chairs in all popular styles. Your choice too of smart tapestries in any color you desire, long wearing wool frieze and the new soil resistant "Fibre E" Frieze. A complete price range to suit every budget.



16.50 to 63.50

**CASE**  
FURNITURE CO.

## DON'T Suffer with the HEAT



LET US INSTALL A

## McClintock Air Conditioner On Your Tractor

Keep the dust and dirt out of your tractor cab and let the cool air in with a McClintock Air Conditioner. Easily installed, it drives from your tractor motor giving you a constant flow of cool, clean air. Don't wait another day, let us show you how it works.

McClintock's Machine Shop

PHONE 822

HEPPNER