



To our friends and neighbors all over town we send our hearty wishes for a joyous season. May you have a wonderful Christmas and a New Year filled with promise.

L. E. DICK

Tip for Santa—Carpet Sweepers



Time was when guests came by invitation to Sunday dinner or supper. But today they drop in anytime, sure of a welcome, and light refreshment which may be served at the dining table, from end tables, coffee table, or anywhere in the house. This pleasant custom makes quick tidying up the rule of the day. Early in the morning to put rooms in company order, after family meals, and again when guests leave. And that's where today's modern carpet sweeper serves as a convenient helpmate. Modern in design and action, light weight and easy to use, carpet sweepers whisk up crumbs, bits of paper and flower petals leaving rugs and carpets in apple pie order. The woman who finds a modern carpet sweeper under her Christmas tree is sure to welcome it warmly as a time saver in keeping rugs bright and new looking. Child specialists say that children cram in more learning between the time they learn to walk and the time they go to school than they possibly can in any amount of time later. And they recommend toys that teach. The toy carpet sweeper gives a child an opportunity to imitate mother, and helps establish the good habit of cleanliness and neatness.



TIME FOR PRESENTS . . . Billy and David are all worked up over the thought of Christmas, and they're tagging their stockings to make sure Santa doesn't get their presents mixed up. They also have found that it's a good idea to thank him in advance.



All the joys of the season be yours in abundance

Heppner Market  
Burkenbine & Wells

SANTA KNOWS WHAT'S BEST AT

Christmas!



A fresh blanket of snow, a little nip in the air, a jingle of sleighbells, neighbors nodding and smiling as they hurry home, and a whole batch of old-fashioned Christmas Greetings:

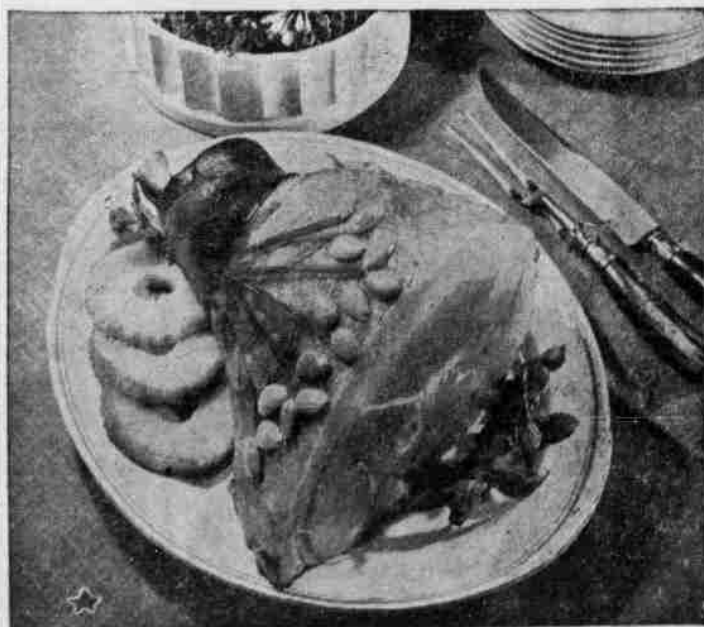
COLUMBIA BASIN ELECTRIC COOP

Science Tells Homemakers to Throw Cold Water on Coffee Complaints



No more zero hours at breakfast! The latest development to solve one of the family's weightier problems is a new cold water coffee extractor that makes completely bitter-free coffee, uniformly good, cup after cup. It speeds things up, too, for you extract a full pound of coffee at any convenient time, then in the meal-time rush you can prepare any amount of coffee in a moment. It is all very simply done with this Filtron, a new three-piece glass appliance which takes just moments to set-up and use. You fill the top bowl with cold water, place a pound of your favorite coffee in the center bowl, and that's all there is to it! About nine hours later the bottom bowl is filled with approximately 48 ounces of pure coffee extract which stays fresh under normal refrigeration for months. For a cup of full flavored coffee just pour hot water over an ounce of the extract. The cold water coffee extractor was created after scientific tests proved that the bitter elements in the coffee bean are far less soluble in cold water. Hence, making coffee with cold water brings out only the good, aromatic coffee flavor. Filtronizing is a great help to budgets, too, for you use only as much coffee as you need when you need it. There are no partly-filled pots of stale coffee to throw away. No messy grounds to deal with every time you make coffee, either, for you only have to contend with grounds once for each pound of coffee. Nice idea for a Christmas gift for harried wife, bachelor or career girl.

HOLIDAY HALF HAM



All decked for Christmas, this roast shank half of ham is ready to grace your holiday table. Citron and almonds decorate the ham. Red tinted pineapple rings, the edges rolled in green sugar sparkles, garnish the platter.



OF ALL THE holiday delicacies, none carries more of the old-time traditions and associations of good eating and festivity than mince pie. Many writers give credit for its origination to Germany, while others claim that its beginning is lost in the annals of history. English literature dating to the 15th century is full of references to this Christmas favorite, an essential part of Yuletide celebrations in England. Old superstitions held that any person refusing to eat mince pie would be unlucky for the coming year. Should he accept the invitation, and partake of mince pie, he would have the same number of happy months during the year as the number of houses at which he ate mince pie. The oriental character of the spices and flavoring was said to represent the rich gifts of the wise men to the Christ Child.

HELPING SANTA When Buying Toys for Children

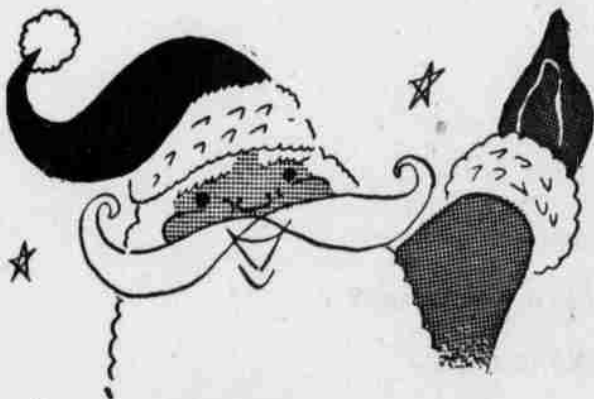
If you wish your child to get the most available from this year's toys, be sure to look for the five major qualities recommended by specialists. Toys should be thoroughly satisfying for the small fry should have five major qualities, say specialists at the college of home economics, Cornell. First, toys should be durable to withstand the rough and tumble of any one child and his playmates. Sturdy toys can be repaired and repainted and passed on for the enjoyment of other youngsters, in or out of the family. Toys should be simple and easy to handle and operate. Simple playthings are more likely to hold interest through long child-hours and less likely to be shelved permanently. Toys should be safe to use—with-out sharp corners or rough places or poor paint that might be harmful to a youngster. And toys should be washable. Finally, toys should have what the specialists call a "do-with" quality. Good old stand-bys such as wagons, blocks, clay, sand, finger paints, and the like may fit into the child's interest of the moment.



A wish for happiness for the finest people we know

C. A. Ruggles INSURANCE AGENCY

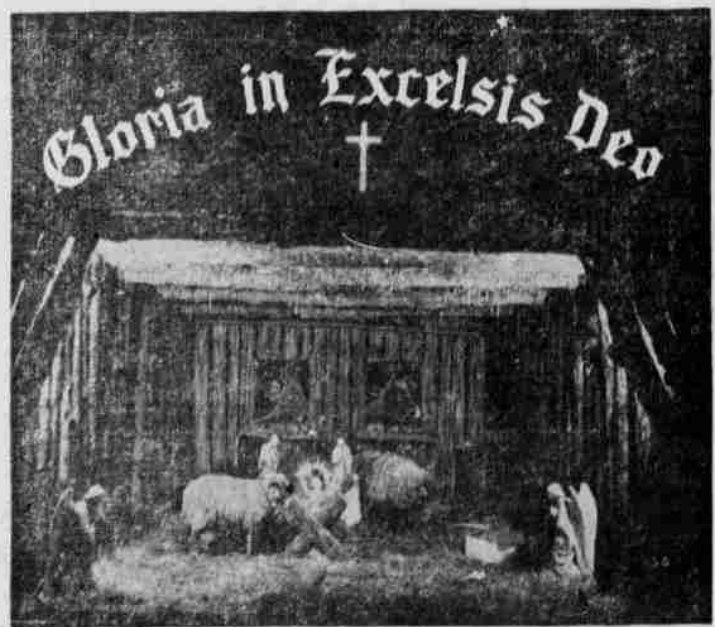
JOYOUS GREETINGS TO YOU AT THE BEST SEASON OF ALL!



Each bell that sounds throughout the town repeats again and again the joyous Christmas wishes we send to you from our entire staff. We wish you peace and good health, happiness and prosperity . . . all of the things that go to make a Merry Christmas and a Happy New Year.

HODGE CHEVROLET CO.

The Heppner Gazette Times—The 12 Month Christmas Gift.



THE STABLE AT BETHLEHEM . . . The Babe in the manger, surrounded by the gentle animals, is a vision we can see more clearly with our hearts than with our eyes. And seeing it, we may truly say, "Glory to God in the highest."

Tradition Says Tree Originated in Egypt

The Christmas tree, now almost a universal symbol, probably came to America from Germany, although tradition has it that Christmas trees originated in Egypt. The palm tree is supposed to put forth a branch every month, and a spray of this tree, with 12 shoots on it, was used in Egypt. German writers mention the tree as early as 1605. The German prince Albert, consort of Queen Victoria, introduced the Christmas tree in England when he had a tree for his daughter.

Basilica of the Nativity One of Oldest Churches

The Basilica of the Nativity at Bethlehem is one of the oldest churches in Christendom, having been built 1,620 years ago. As it stands today it represents the original building as erected by the Emperor Constantine and restorations and additions made under Justinian. It is surrounded by three convents of separate faiths, Greek, Latin and Armenian. All three have the privilege of worshiping in the Grotto of the Nativity, and, surprisingly enough, all three celebrate Christmas on separate occasions.



Good fortune and prosperity dwell always on your hearth

Hatfield Grocery LEXINGTON