

From The County Agent's Office

By N. C. Anderson

Intelligent use of mineral supplements in livestock feeding will pay dividends but over-use may prove harmful.

That's a bit of advice for Oregon farmers contained in "Minerals for Livestock", bulletin number 403, just released by the Oregon State college agricultural experiment station.

Up-to-date recommendations for feeding various minerals to livestock are contained in the new bulletin, written by Dr. J. R. Haag, OSC animal nutrition chemist.

Mineral deficiencies are responsible for livestock losses in some areas, but indiscriminate feeding of these supplements is not a blanket remedy for unthrifty livestock, diseases or other disturbances, Dr. Haag points out. Copies of the publication are

available at county extension office.

Plentiful food supplies are in prospect for the United States this year according to data available from U. S. D. A. and Oregon State college. The farmer shares the consumer's dollar equally with marketing agencies.

The increase in population has bought with it, of course, an increased demand for food. More food is being consumed by people in the United States this year than ever before. Not only are more people eating food, but people are eating more food. Per capita consumption of food is about 13 per cent above the 1935-1939 period. During the second quarter of this year, consumers spent about 26 percent of their disposable income for food, compared to only 23 per cent during

pre-war years. If they ate only the same kinds and quantities of food that they did before World War II however, they would have spent only 19 per cent of their disposable income.

Plans are well underway for the annual meeting of the Morrow County Livestock Growers Association which will be held at Heppner on Saturday, Dec. 1.

Committees for arranging for the social activities and program met Monday evening at the County Agent's office with association chairman Frank Anderson presiding.

Arrangements were made for a cattle grading demonstration for Saturday morning. Brood cows, young bulls and aged bulls and weaning heifers will be graded by those attending the demonstration. Harry Lindgren, Extension Animal Husbandman, Oregon State College, will be the official grader. A committee of John Graves, Heppner, Newt O'Hara, Lexington; Frank Anderson and Raymond Ferguson, Heppner will select the classes for grading. The demonstration will be held at the Heppner Sales Yard beginning at 9:30 a. m. December 1.

Dr. Fred McKenzie, Chairman, Animal Husbandry Department, Oregon State College, will discuss feed efficiency testing at the afternoon program. Harry Stearns, Chairman, Oregon Cattleman's Association, Prineville, will be present for the day.

The social committee have arranged for a social hour, banquet and cowboy dance for the evening entertainment. Steve Thompson, Ray Ferguson and Harold Erwin are making these arrangements.

Highlighting the banquet will be the presentation of the County winner of the "Cattleman of the Year."

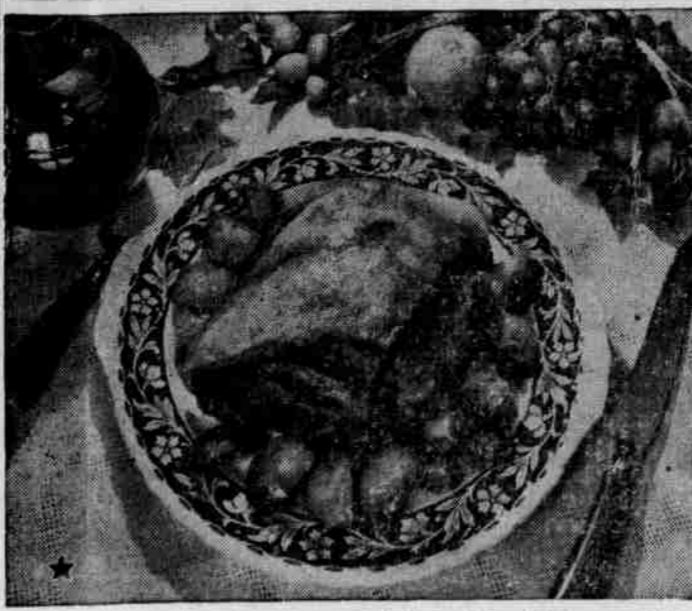
Continuing the annual wheat variety nurseries as a demonstration to farmers in Morrow County, plots were established last month on the Frank Anderson farm, Eightmile and Rietmann Brothers, Ione. These are located on heavily traveled, easy accessible roads for the convenience of all farmers who wish to compare growth habits, varietal and agronomic characteristics. Yields will be made available to all when the nurseries are harvested.

Varieties grown in these nurseries are Rex, Brevor, Rio, Orfed, Golden, Elmar, Kharkof, Rio-Rex x Athena, Orfed x Elgin Selection 1, Rio-Rex x Cheyenne, Oro-Turkey-Federation x Elgin Selection 30. New varieties added for the first time this year and their characteristics are Rio x Wasatch, a hard red selection with very good smut resistance and a high yield record at the Sherman Branch Experiment Station at Moro; Rio-Rex x Nebred, a hard red, more smut resistant than Rio x Wasatch but lower yielding, Hymar x Orfed a soft white, though as Orfed may get hard, which appears more winter hardy than Orfed can be seeded in the spring as well as winter, good smut resistance; Elgin x P-3—a soft white selection, with good smut resistance, a very long club head which should increase its test weight and yield over Elgin and Elmar.

These nurseries are seeded for the benefit of Morrow County farmers in order that they may keep posted on comparison of varieties and see new ones as they are tried out.

With National 4-H Achievement Week being observed this week, November 3-11, there is no better time to pay tribute to

Novel Thanksgiving Feast



Here's a different choice for your Thanksgiving table—a cushion-style pork shoulder. This boneless cut is ready-made for stuffing with celery or fruit mixture. It's colorfully garnished with candied apple wedges.

Rebekahs and IOOF Plan Joint Meeting

The Rebekah degree was conferred upon one candidate, Thomas Allen, at the regular meeting of Sans Souci Rebekah Lodge Friday evening. Plans were completed for the joint meeting of Oddfellows and Rebekahs on the evening of November 14. An interesting program has been arranged and all Oddfellows and Rebekahs residing in this area are urged to be present to participate in the evening's fun. Invitations have been extended to persons who are interested in becoming members. Hostesses for Friday's meeting included Mesdames Ted Pierson, Robert Dobbs, Dalbert E. Bailey, Don Robinson and Jesse C. Payne.

This year's theme "Working together for World Understanding" is appropriate at this time of world turmoil.

Four-H Club work is a kind of training in which rural youth learns better ways of farming and homemaking, better ways of working together in groups and on community matters, better ways of living. He recognizes the basic educational values of farm life. He puts the emphasis on self-reliance, character, and on appreciation of the things of the open country. It makes for good homes, good citizens, and a cultural rural life.

Lt. Col. and Mrs. Clayton Shaw and family came up from Corvallis Friday to spend the weekend with her parents, Mr. and Mrs. J. Osmin Hager.

Guests from out of town were Mark Wilsey, past grand master I. O. O. F.; Mrs. Elsie Mulkey and Mrs. George N. Perry, Pendleton.

RHEA CREEK GRANGE NEWS

The all day H. E. C. meeting will be at the home of Mildred Wright Tuesday November 13. There will be an exchange of candy recipes and gift wrapping will be demonstrated.

A district H. E. C. meeting is to be held at Pendleton in the Chamber of Commerce room on Thursday November 15 at 10:00 a. m. All subordinate chairmen or any other H. E. C. members are urged to attend. District manager Mrs. Josephine Holland is in charge of this meeting.

The Rhea Creek grange held election of officers Saturday evening with the following being elected to office: Master, Oren Wright; Overseer, Barton Clark; Lecturer, Emma Drake; Steward, Harold Peck; Assistant Steward, Walter Wright; Chaplain, Pearl Wright; Treasurer, Elmer Palmer; Secretary, Muriel Palmer; Gatekeeper, Leonard Rill; Ceres, Eva Wright; Pomona, Mary Wright Jr.; Flora, Ninon Rill; Lady Assistant Steward, Roxie Lovgren; Executive Committee, Ben Anderson, Ray Wright and Ray Drake.

Visiting at the home of Mr. and Mrs. Harold Wright are Mr. and Mrs. Virgil Conway of Portland.

Lt. Col. and Mrs. Clayton Shaw and family came up from Corvallis Friday to spend the weekend with her parents, Mr. and Mrs. J. Osmin Hager.

Sorority Initiation Held At Pendleton

Iota Chapter of Delta Kappa Gamma, honorary society for women in education, held its annual formal dinner and initiatory ceremony in Pendleton Saturday evening at the Presbyterian church parlors. Three new members were initiated into membership in the society. They were: Mabel Hodge of Pendleton, La Verne Partlow of Boardman and Gladys Ely of Ione.

Induk Pakk, a noted lecturer and radio speaker from Korea, was guest speaker of the evening. She came to the United States some three years ago on a lecture tour; but before her engagements were completed, she was caught by the present Korean War and has been unable to return to Seoul. She is guest lecturer at Adelphi College, Garden City, N. Y., and a speaker for the radio program, "The Voice of America."

An impressive candle light memorial ceremony in remembrance of Mrs. Julia Kaanagard and Mrs. John Mulligan was conducted by Fannie McGrew, Galena Sandwick, and Merle Best.

The following attended from Heppner: Ethel Lyngholm, and Lucy Rodgers.

Mr. and Mrs. Herman Green made a business trip to Pendleton the first of the week.

Notice To Subscribers

When requesting a change of address for the Gazette Times please give your old as well as your new address. It will speed up the change through our office and eliminate missed copies.

HOW TO SELL YOUR RANCH

Write for free information on the new method that brings results—one ranch sold EVERY TWO DAYS last month by our organization. With nearly 100 branch offices throughout the West, we offer you ACTION backed by the largest national advertising campaign ever developed to bring BUYERS to your ranch. Write today for information on our organization—no obligation.

Turner, Van Marter & Company

affiliated with



SELECT NOW.... Lay Away for Xmas

Picture a **LANE** Cedar Chest IN YOUR HOME...

WHERE BEAUTY and DUTY GO HAND IN HAND... to give you the ultimate in smartly designed, truly functional furniture! See the many models of Lane Cedar Chests now on display at our store!

LANE IS WORLD'S ONLY PRESSURE-TESTED, AROMA-TIGHT CEDAR CHEST.

\$49⁹⁵ UP EASY TERMS

Case Furniture Co.

So You Can Enjoy The "Extras" In Life...

Open A FIRST NATIONAL SAVINGS ACCOUNT Today!

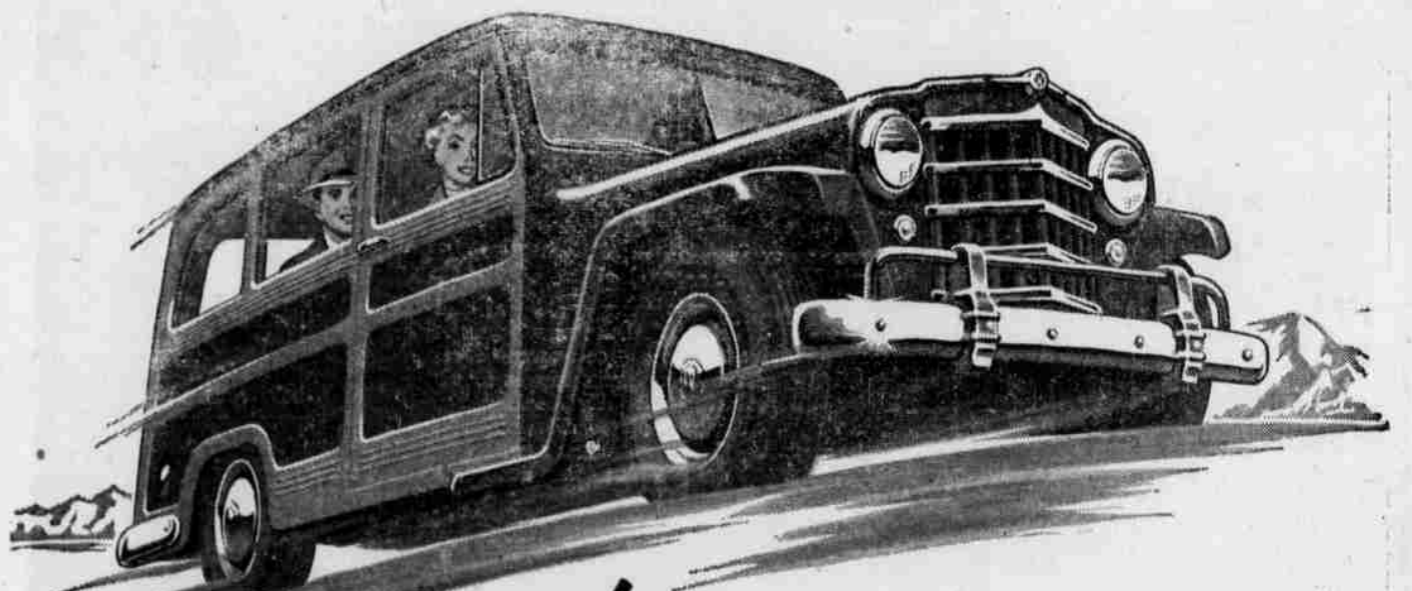


Nothing can equal the feeling of security that comes with having money in the bank...money you can count on for the "extras" in life. There's no substitute for a bank savings account. First National deposits are insured up to \$10,000 by the Federal Deposit Insurance Corporation.

"LET'S BUILD OREGON TOGETHER!"

Member Federal Deposit Insurance Corporation

HEPPNER BRANCH FIRST NATIONAL BANK OF PORTLAND



Up to \$400 less

THAN COMPETITIVE FULL-SIZE STATION WAGONS

-AND ONLY WILLYS GIVES YOU:

- The mileage-stretching F-head HURRICANE Engine with the highest compression in its field—7.4 to 1.
- Easier maneuverability in traffic and parking plus roomy comfort for six in its spacious body.
- Tall, wide cargo space—98 cu. ft. in size, 1/2-ton capacity—with big, strong, floor-level tailgate.

WILLYS

STATION WAGON

TOP TRADE-IN ALLOWANCES—SEE US NOW!

FARLEY MOTOR COMPANY

PHONE 682

HEPPNER



Don't Worry

ABOUT

- Ink Spots
- Grease Spots
- Or Dirt

We Clean Clothes CLEAN!

Don't worry about a spot on a new dress or suit... we'll remove it and have your clothes back to you in no time at all. You'll be pleased with our work and our service.

THANKS— For your response to our request for hangers. We can still use more if they are in your way.

HEPPNER CLEANERS