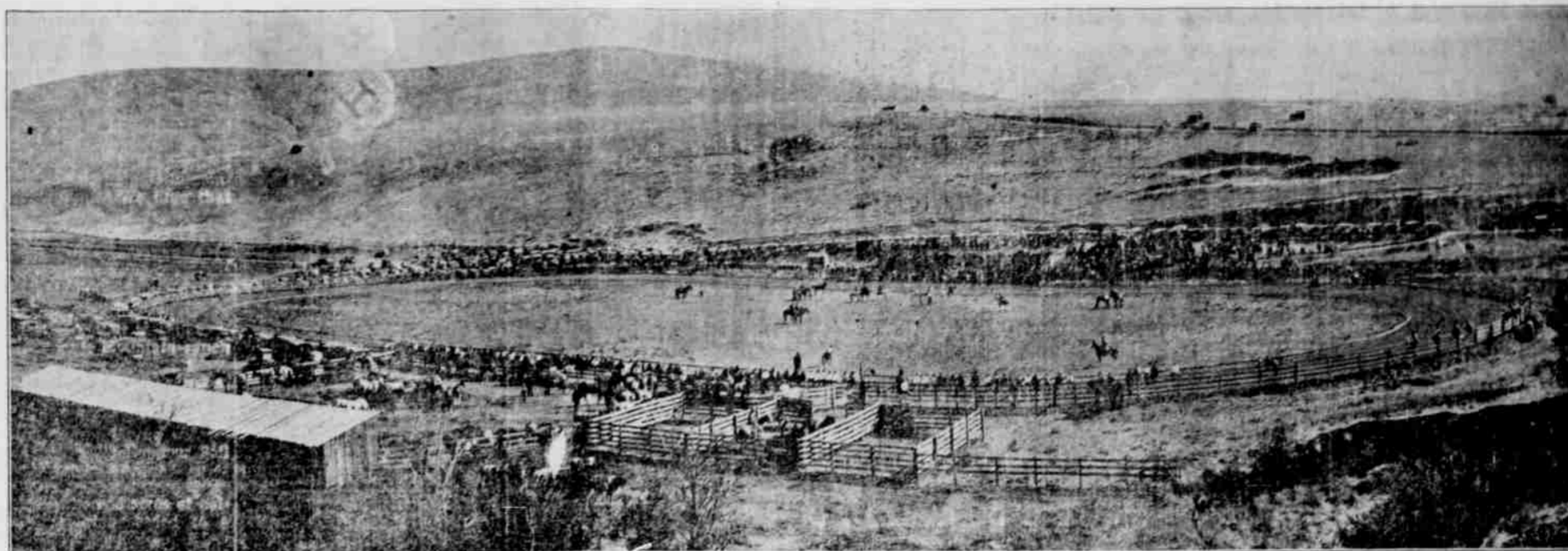




Speeding through the night, the driver of this car was momentarily blinded by approaching headlights. Because he was going too fast to control his car instantly, he swerved off the highway and crashed into a telegraph pole with such force that the car was almost broken in two. He was dead when help arrived. National Conservation Bureau advises night-drivers to keep their eyes focused on the side of the road, never to look directly into headlights and—most important of all—to drive at moderate speed.



This is a picture of the Heppner Rodeo in early days of the show. Since this was taken numerous changes have been made to the grounds, with additions to the grandstand and bleachers. Sheds of the CCC camp had not been built at that time and that leaves some open space on the north side of the track. Saddle stock was plentiful and many local cowboys participated in the events.

**STOCK MEN TAKE NOTICE**

**Wheeler county stock ranch for sale.**

3380 acres deeded, 2340 acres outrange controlled. Modern 8-room home nicely finished. Large stock barn, 2 large hay barns, 2 granaries, wood shed, chicken house, new fir corrals. This ranch is all fenced and raises the finest of crops. Has some natural meadow. Price \$27,500. This is only one of our listings which includes some of the best in Oregon.

**Shelley Real Estate**  
THE DIRT MERCHANT REDMOND, OREGON

**Top of the fruit crop**



Luscious  
Ripe and  
Juicy

All the goodness and sweetness of nature's fruit crop is folded into the creamy smoothness of our ice cream to form a most delicious

Sample a **Superlative Sundae** or a **Scrumptious Soda** at **Saager's**. Icy cold **Phosphates** and **Fountain Drinks**.

**Saager's Pharmacy**

**Steen Praises Air Travel For Farms As Meeting Nears**

The skyways rather than the highways appeal to Harold Steen, Milton, president of the Oregon Flying Farmers association, as the best way to get from eastern to western Oregon, he remarked after flying to Corvallis recently to make final arrangements for the state convention there August 24 to 26. Steen, who flew down the Columbia in a small plane, making only one stop at The Dalles enroute, said he considered the trip safer than driving over the tortuous curves of the Columbia highway, and more economical, as he used only 12 gallons of gas for the trip, while saving many hours of time.

Final plans for the convention as worked out with W. L. Teutsch, assistant director of extension and college adviser to the association officers, call for a busy program of business, discussions, demonstrations and an annual banquet scheduled for Monday night.

The flying farmer visitors will also be taken on a conducted tour of parts of the experiment station and will see motion pictures of the first tri-state organization meeting last year in Spokane. Meetings are open to those contemplating use of airplanes on farms as well as those already using them.

President Steen hopes to have the membership nearly doubled by the time the convention is over, although some 75 or more are already enrolled. Other officers are Lee Holliday, Klamath Falls, vice-president; Garland Swanson, Ione, secretary-treasurer; Gordon Gribbling, Elgin; Carey Strome, Junction City; Palmer Torvend, Hillsboro, and Worth Wiley, Dayton, directors.

**Over Two Million Trees Planted In Northwest States**

A total of 2,328,000 seedling trees was planted on the national forests of Oregon and Washington during the fiscal year 1947, according to a report just issued by the U. S. forest service, Portland. This was sufficient to plant 3.75 acres, says the report.

An additional 1,400,000 trees were available in the government nursery but were not planted because of delays occasioned by labor and appropriation difficulties. These will be held over until the next planting season, when they will be planted as three year old stock. Usual practice is to plant the nursery

seedlings at age two years.

Principal planting areas were on the Olympic national forest, northwestern Washington, 187,000 trees; Siuslaw, on the Oregon coast, 138,700 trees; and Snoqualmie, in the Washington Cascade range, 100,000 trees. Planting also was done on the Fremont, Rogue River, Siskiyou, and Umpqua in Oregon; and on the Columbia, Mount Baker, and Wenatchee in Washington.

The forest service nursery is located on Wood River, in southern Washington, near the town of Carson. It is again operating at capacity, after low production during the war years. A new nursery for ponderosa pine is being developed near Bend. It is expected to be in operation during the coming

year. Total that will be available for planting in fiscal year 1948 is 5,931,000 trees, consisting of Douglas fir, Sitka spruce, Port Orford cedar, and Ponderosa pine, according to the forest service. The Columbia national forest planted 22 acres in cooperation with the Boy Scouts and Future Farmers of America; and the Mount Baker planted nine acres in cooperation with the Boy Scouts.

Mrs. Arlett Brock of Portland and Mrs. Ben Ward (Sarah Gentry) of Ontario returned to their homes Monday after visiting in Heppner for several days with their sister-in-law, Mrs. Alice Gentry, and brother, Mack Gentry.

**Attention Farmers, Home Owners**

Have obtained plenty of crushed rock and reject gravel, ideal for driveways, roads and yards.

Place orders now before it is too late.

**We Still Haul Concrete Gravel from Umatilla**

Rates Reasonable. Special Rates for Large Orders.

**LEXINGTON SAND & GRAVEL**  
Phone 3311



Princess Laurel Palmateer

Everybody's Headin' for  
Ione, Oregon  
Saturday Evening  
**August 23**

Where Willows Grange is sponsoring a

**PRINCESS DANCE**

in honor of

**PRINCESS LAUREL**  
of the 1947 Heppner Rodeo

You always have a good time at  
**Willows Grange Hall**

Abmission \$1.00---tax included

**Two Big Events Coming Up---**

Heppner Rodeo ..... Sept. 5-6-7  
Opening of School ..... Sept. 8



We can help you look your best for the "Epic Drama of the Old West in the Heart of Eastern Oregon"—even to polishing up your Levi's... and when

the gong sounds on opening day of school, you will want to look your best. Maybe we can do something about that too. Try us and see.



**HEPPNER CLEANERS & DYERS**