

Northwest Power Companies Merge Under New Order

Plans for transfer of Pacific Power & Light company's common stock ownership from New York to the Pacific Northwest and for the ultimate establishment of the company as a unit of an independent regional utility system were announced today in a joint statement released by Paul B. McKee, president of Pacific, and Kinsey M. Robinson, president of the Washington Water Power company, Spokane.

The announcement was made concurrently with the filing of applications with the Securities and Exchange commission at Philadelphia and the Washington department of public utilities at Olympia for approval of the first step in the program—the contribution by American Power & Light company to Washington Water Power of Pacific's common stock, all of which is owned by American.

Carrying out a dissolution program ordered by the SEC under the public utility holding company act, American Power & Light would then sell its common stock holdings in the Washington company, making that utility and Pacific an independent integrated system conforming to the federal legislative pattern.

"Transfer of Pacific's common stock to Washington Water Power will make it possible for American to dispose of its interest in the two companies without disintegrating their operations," said McKee and Robinson in their statement, adding that the move was regarded as a constructive and beneficial solution to the long-pending problem posed by the SEC order.

"The purpose is to maintain the efficiencies and economies that have been developed during the 20 years the Pacific and Washington companies have been associated under the same common stock ownership, and to preserve for customers and investors the benefits derived from the coordinated operation of the systems."

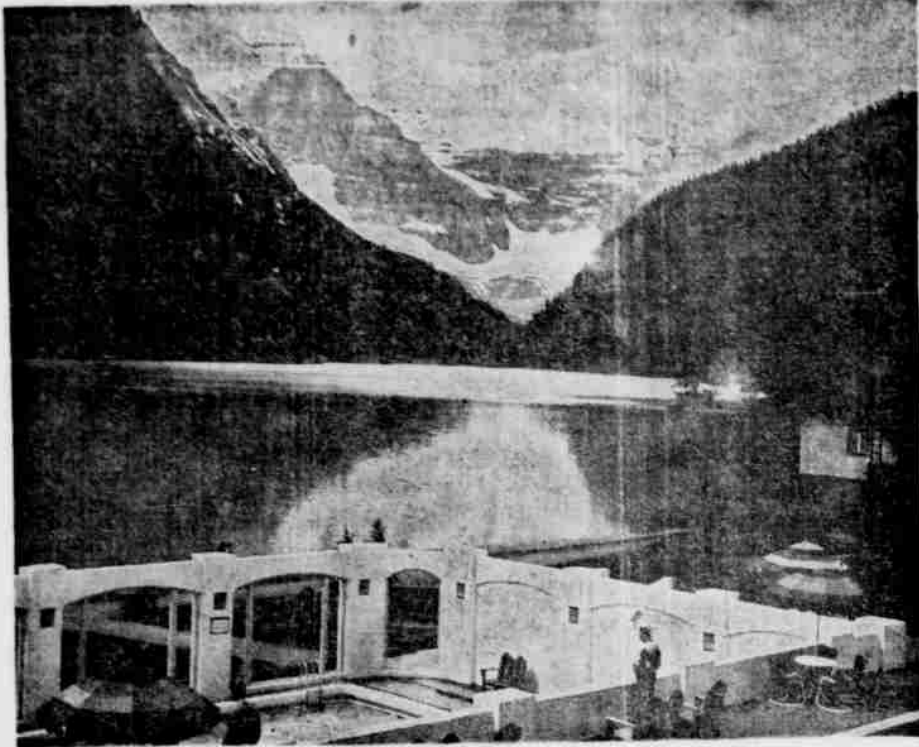
The utility heads pointed out that there is a strong community of interest between the inland Empire territory served by the Washington company and the Columbia Valley areas served by Pacific, and that the two sections constitute a natural trade area, closely linked by transportation and business connections.

Main transmission lines of the two companies are physically interconnected, the Washington Water Power company having supplied Pacific with a large part of its power.

"Pacific will continue as a separate operating company, under its own board of directors and management, with headquarters in Portland," McKee and Robinson stated. "It is the aim and desire of both the managements that the Washington company's board of directors shall include some members of the Pacific board."

Advantages to be gained by maintaining an unbroken affiliation between Washington and Pacific include economies in the procurement of future power

Motorloggers Fail to Find Words Fit to Describe Canadian Rockies



Lake Louise ranks with Banff as a resort. Here we look over lake toward Mt. Victoria.

This is a condensation of a motorlog article appearing July 20 in The Sunday Oregonian. It is a series prepared by the Oregonian in co-operation with the Oregon State Motor Association.

BY JALMAR JOHNSON
Sunday Editor, The Oregonian

Our Oregonian-Oregon State Motor Association motorlog party of four, which visited the Canadian Rockies late last month in the AAA white travel car, used nearly all the words in the dictionary having to do with grandeur as vistas of infinite beauty and majesty passed before our view. But we had to admit that words failed us and now this writer has the same difficulty in putting our reactions on paper.

The part of the Canadian Rockies we saw are those within the boundaries of Banff, Jasper and Kootenay National parks. We entered the area from Calgary on the east.

It was a blustery, cold day in Banff and we decided to postpone sight-seeing there until another time. We headed westward again toward Lake Louise, 41 miles distant, where we had reservations for the night.

Lake Jade Green

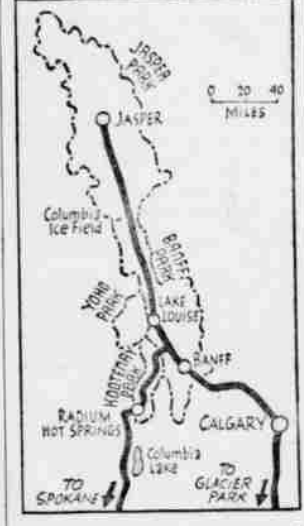
Next day it was clear but cold when, after breakfast, we walked around a turn in the road and came upon entrancing, jade-green Lake Louise, given its peculiar color apparently by the milky glacial streams that feed it. The lake is set like a jewel in a pocket among the mountains. At the far end towers 11,365-foot Mount Victoria, gowned in white by Victoria glacier. Smaller peaks, though not actually small by any means, complete the deep cup in which the lake lies.

It is a majestic sight and at the same time peaceful. This

feeling of calm is heightened by the luxurious Chateau Lake Louise from the grounds of which we viewed the lake and the mountains.

At the boundary between Banff and Jasper National parks we reached the climax of our drive, the Columbia Ice Field.

The ice field covers an area of more than 119 square miles and is estimated to be 2000 feet thick. It is the largest and most impressive body of ice outside the Arctic circle. Its average elevation is between 9000 and 10,000 feet, its loftiest peaks towering to 11,000' and



Map of route through national parks in Canadian Rockies described in motorlog article.

12,000 feet. It has been called "Mother of Rivers," as it feeds streams that eventually find their way to three oceans, the Pacific, Arctic and Atlantic. Not all of this can be seen from the highway, of course. Only a finger of the ice field, Athabasca glacier on Mt. Athabasca, can be reached without a hard, long climb to the roof of the Rockies. But even this small part of the ice field is nothing less than spectacular.

Peak Colors Vary

After the ice field, the peaks north toward Jasper seemed to become less rugged. But they were beautiful, nevertheless. The mountains at times seemed purple, at other times they showed a rust color. Waterfalls gushed down the mountainsides. One outstanding falls, which we drove off the highway a short distance to see, was Sulphur, which tumbles and boils through an unbelievably narrow gorge.

Jasper park offers varied fare for the vacationist. He can simply loaf or he may fish, go boating, play golf or tennis, climb mountains, swim, or go on long or short horseback trips to many lakes and mountains. But we were traveling fast and we could not partake of these pleasures. Next morning we headed back toward Banff on the last lap of our trip through the Rockies which was to take us through Kootenay National park in British Columbia.

At Banff we took up our sight-seeing where we had left off on our wintry entrance to the park. We drove out from the town to Banff Springs hotel which stands as a great masonry sentinel overlooking Bow valley.

RED NICHOLS' ORCHESTRA SLATED AT IONE AUG. 8

Red Nichols and his "Five Pennies," featuring lovely Dottie O'Brien, vocalist, will play for a dance in the Ione Legion hall, August 8.

Red Nichols is said to be one of the most influential figures in modern music. He began playing the trumpet when three years old. He comes from a musical family, his father being a professor of music at the Utah university at one time. Red Nichols and his "Five Pennies" joined Glen Gray and his Casa Loma orchestra in 1944 on a cross country tour for just the one year.

hostesses, Mrs. Paul O'Meara and Mrs. Harry Yarnell.

Mrs. Garland Swanson was ill for several days but is better now.

Mr. and Mrs. Walter Roberts left Friday morning of last week for Chehalis, Wash., where they attended the Roberts family reunion. It was the first time the family had been together for 30 years. Mr. and Mrs. Roberts returned Monday. Mrs. Earl Blake of Heppner and Mrs. Echo Palmateer had charge of the post-office during Mrs. Roberts' absence.

Mr. and Mrs. R. L. Casselman and granddaughter Janice spent the week end in Portland. Janice went to Seattle to visit her mother.

The Birthday club met at the Congregational church parlor Tuesday, July 29, in honor of the birthdays of Mrs. Wate Crawford and Mrs. Echo Palmateer. They received some lovely gifts. Refreshments were served by the

You do not need to drive a tired looking car just because a new car is not available. We will remove the dents and paint it so it will look new again. Rosewall Motor Co.

Butter Creek Girl Chosen Queen For 1947 Umatilla Fair

Blonde, blue-eyed Queen Marian Andrews of Butter creek will head the royal court of five beautiful girls of Umatilla county at the annual county fair at Hermiston August 28-29-30. The fair association announced this week.

Queen Marian will have as her assistants Norma McCann, Freewater; Georgia Snead, Umatilla; Frances Stevens, Stanfield, and Lois Brooks, Ordance.

Now a student at Eastern Oregon college at La Grande, Queen Marian, 19, was graduated from Hermiston high school in 1946. She was president of the Girls League and a member of the staff of the high school paper. Five foot seven and "tall in the saddle," she will ride her dark sorrel, "Sonny" during the fair. The attractive queen, who is the daughter of Mr. and Mrs. H. J. Andrews of Butter creek, is also a member of the royal court of this year's Pendleton Round-Up. Her coronation will be on Thursday evening, August 28.

Let us underseal your car and protect it from dust and noise. Rosewall Motor Company.

IONE LEGION HALL

AUG. 8, 1947

Admission \$2.00 (inc. tax)



In Person

RED NICHOLS

HIS TORRID TRUMPET AND HIS ORCHESTRA

FEATURING HIS FAMOUS FIVE PENNIES

SAVE FUEL



INSULATE YOUR HOME

We Stock Insulation Bats of All Kinds

Also Can Estimate Complete House Jobs

It Pays to Buy at Home

TUM-A-LUM LUMBER CO.

Frank E. Davis, Mgr.

Let's Go Western!

RODEO PRINCESS DANCE

Saturday, August 1

Fair Pavilion, Heppner

Honoring

Princess Francine Hisler

of LENA

Come Dressed In Your Western Best

Sponsored by Junior Chamber of Commerce

Attention Stockmen

The following rates to Portland from Heppner, Lexington and Ione will be in effect July 17th:

63c A.Q. 56c, 7500 to 15,000 lbs.
46c, 15,000 lbs. and over

Chapman Freight Service

Phone 666 Pilot Rock, Ore.

Important, Oregon Motorists!

Driver's Licenses Numbered 5R-33,000 To 5R-66,000 Expire During July!

You must apply for renewal *this month ONLY* if your driver's license serial number is in the above group.

- No individual notice will be mailed to you.
- Do not apply by mail. Apply at the driver's license clerk or examiner in your community.
- No re-examination is required.

If your driver's license number is higher than 5R-66,000, get a renewal schedule from any service station, police or sheriff's office, or license clerk or examiner.

Oregon driver's licenses 5R-1 to 5R-33,000 are already invalid. Look at yours to make sure you are not violating the law.

Robert S. Farrell, Jr., Secretary of State

IONE NEWS . . .

Mrs. Louis Bergevin returned Monday from Haines where she visited her sister.

Mrs. Tom White and Mrs. Imogene Mooney visited their brother, Fred Anderson, at Prosser over the week end.

Mrs. Gordon White and son Gary attended the Pacific International trapshoot meet at Yakima over the week end, where her father, O. S. Shiffer

supply. It was stated, either through joint purchase from Bonneville or in the addition of more generating facilities if that proves necessary. Such savings were said to amount to several hundred thousand dollars a year compared with the cost of securing independently an equivalent power supply. This will help in maintaining low electric rates.

McKee and Robinson expressed hope that when American Power & Light sells the common stock of the Washington company a large part of this stock might be purchased by citizens of the region. A majority of the preferred stocks of the Pacific and Washington companies now is owned in the Pacific Northwest, representing some 6,000 individual holders.

They also expressed the hope that the necessary commission approvals could be obtained promptly and that the entire program for bringing about an independent Pacific Northwest operation might be concluded in the near future.

took part in the shooting. Mr. Shiffer won the Oregon state championship recently at Salem. Gary White returned to Forest Grove with his grandfather.

Mrs. Bessie Everson sold her ranch below town to Mr. and Mrs. Holiday of Umatilla. Mrs. Everson will live in Spokane.

The I.M.A. benefit dance Saturday night was a success.

The school district has received a new stove and sink for the lunch room, which will be a great improvement and make the work much easier for the cooks.

Pendleton visitors Sunday were Donald and Eunice Peterson. "Pinky" Allyn, Robert and Billy Joe Rietmann.

Mrs. Delbert Emert is in Portland taking medical treatment. Her daughter Mary is staying with Mrs. Mary Emert and Mrs. Ada Emert.

Baptismal services were held at the Valley Lutheran church at Eightmile Sunday morning with Rev. Philip Ellman of the Augustana Lutheran church of Portland officiating. The following were baptised: Karen and Cheryl Lundell, daughters of Mr. and Mrs. Raymond Lundell; Elaine Harrison, daughter of Mr. and Mrs. Edward Harrison of Portland, and a little girl from Heppner.

Rev. and Mrs. Philip Ellman of Portland and Rev. Ellman's sister, Miss Helene Ellman of Los Angeles, were week-end guests at the Wm. Bergstrom home.

For Your Standard Oil Products

See

UNREIN MOTOR SERVICE

Chevron and Chevron Supreme Gasoline

R. P. M. Motor Oils

100 Octane Aviation Gas for your Gas Stove, Lantern, or Blow Torch (No Lead)

Standard Credit Cards Accepted