



Rosewall Motor Company

Your FORD Dealer in Morrow County

cordially invites you to attend the OPENENING of their
modern and completely equipped automotive
headquarters

SATURDAY, APRIL 19

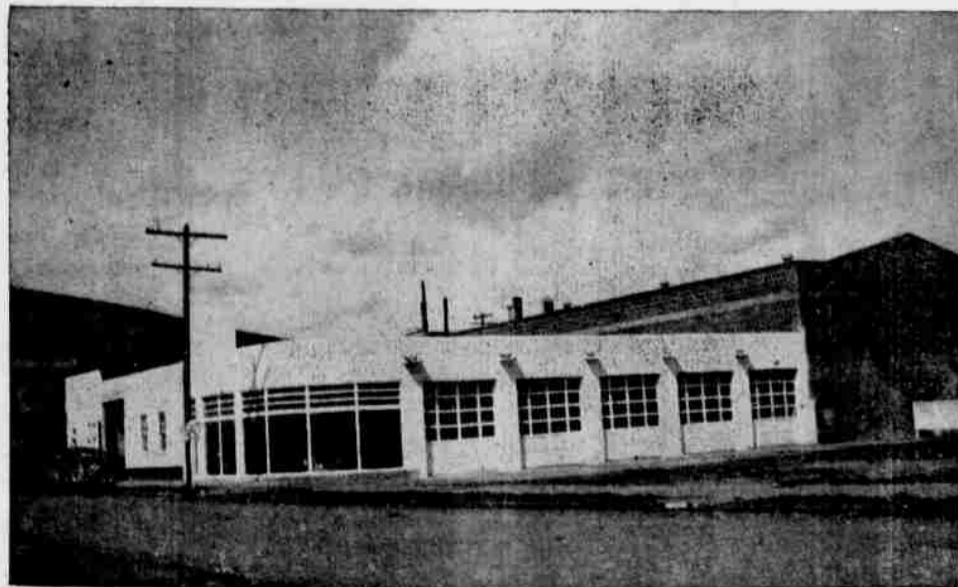
Dancing 9 to 12



Refreshments

Below is a view of the annex showing the fine entrance doors, especially constructed to provide truck service. The annex is 36 x 92 feet, permitting easy handling of trucks as well as showroom space for new cars & trucks.

Ford Is Out In Front
--with the only
Power Choice in the
Low Price Field--
V-8 or 6-Cylinder



ROSEWALL
Is Out In
Front
With Service

See the New Fords on Display