

Announcing the

# Opening

of Eastern Oregon's Most Modern

## REPAIR SHOP AND PARTS DEPOT

for Servicing Trucks, Tractors, Cars and Farm Implements



Here is a partial view of the new Repair Shop which has 8 Truck and Tractor Repair Stalls measuring 16 ft. by 44 ft. each. The shop is equipped with the most modern tools and facilities necessary to insure speedy service and quality workmanship at the hands of expert mechanics.

**BRING  
YOUR  
SERVICE  
TROUBLES  
TO US**

**THE JACKSON IMPLEMENT CO.,** which opened for business in Lexington in 1935 as sales and service headquarters for the complete International Line and Nash Automobiles, announces the completion of a huge addition to its original quarters. The new structure, with the old building which it adjoins, provides a total space of 50 ft. by 340 ft. for the service and display of Farm Equipment, Parts Department and Repair Shop.

Construction on the new building started last Fall when special permission was granted by the War Production Board which recognized the urgent need for greater service and maintenance facilities necessary to keep Farm Equipment rolling in the great wheat belt of Oregon. The new plant is dedicated to the task of producing more

**FOOD FOR FREEDOM**



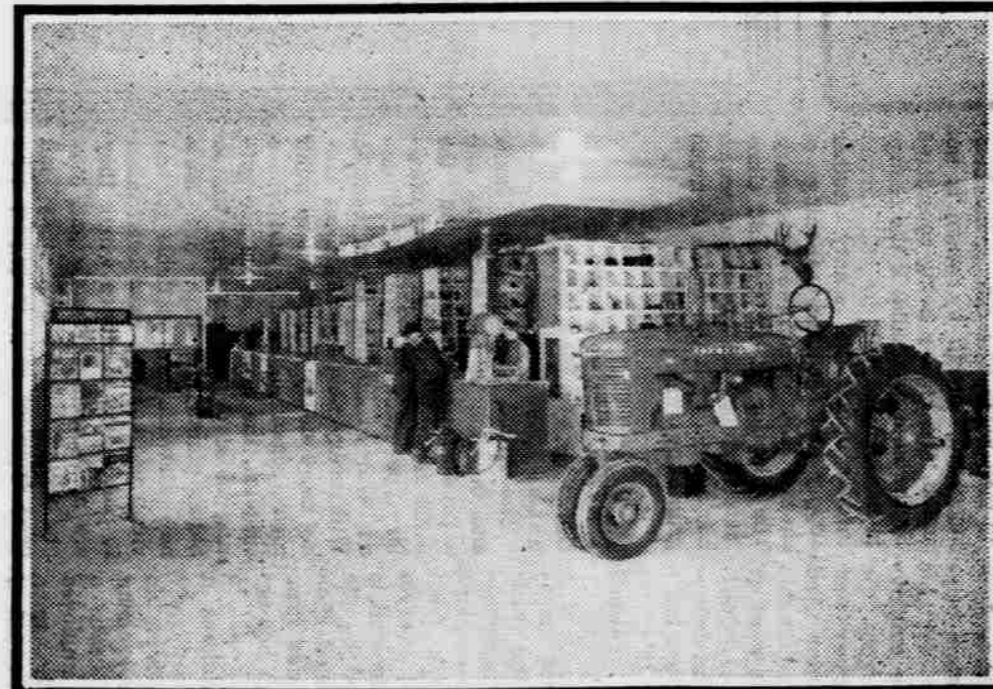
The picture above shows part of the big repair shop now operating, and which is equipped to repair or overhaul any kind of Truck, Tractor, Car or Agricultural Implement. A good supply of new tools and equipment has been received and installed and more are on the way. The shop is in charge of a thoroughly competent and experienced superintendent with a crew of expert repair men who have been specially trained for the job.

### Largest Stock of PARTS in Eastern Oregon

The photograph at right shows a section of the large Parts Department in which will be carried a complete stock of repair and replacement parts for Trucks, Tractors, Nash and other Cars and Farm Implements. This important service will be appreciated by Farmers, Logging Concerns, Trucking and Construction Outfits operating in this section of the state.

### Featuring the Complete INTERNATIONAL LINE

With much larger allotments of NEW Farm Equipment now available, and with greatly enlarged quarters to accommodate more complete displays and expanded service facilities, the requirements of farmers for efficient new implements of all kinds can now be met most satisfactorily here. Farmers are invited to come in and inspect the outstanding features of the complete new 1944 International Line and place orders for early delivery.



**Jackson Implement Company**  
LEXINGTON, OREGON