

STATE CAPITAL NEWS

- Less Tax Money
- Border Patrol
- Reciprocity

By A. L. LINDBECK

Salem—Oregon property owners will be required to pay only \$301,203.89 toward the support of state government in 1940. The remainder of the \$8,965,025.73 required to finance the state's tax-supported activities will come from income taxes and miscellaneous fees.

Tax requirements of the state within the constitutional six per cent limitation total \$7,245,046.78 with special millages authorized by vote of the people amounting for an additional \$1,719,978.95. Included in this last figure is \$1,132,856 for higher education, \$449,546.03 for the World War Veterans State Aid commission, and \$137,576.92 for irrigation district interest bonds.

This is the first time in three years the state has levied a tax on property. The recurrence of the property levy this year is accounted for by the inclusion of the bonus commission levy of one-half mill, which was waived in the 1939 levy, and the gradual increase in the tax base through the constant application of the six per cent increase each year.

The elementary school tax of \$1,798,184.12 while included in the state levy is not properly a state tax inasmuch as the tax is retained by the several counties and is distributed among the elementary schools.

If you are an average consumer of water utilities operating in Oregon your water bills for 1938 totalled \$30.87, according to statistics compiled by O. R. Bean, public utilities commissioner. Of this amount \$5.94, or 13.71 per cent went toward the payment of taxes.

Lynn F. Cronemiller, mentioned as a possible successor to J. W. Ferguson, state forester, when the latter's resignation becomes effective December 31, is not in line for the appointment according to authoritative sources. Cronemiller served as state forester prior to the appointment of Ferguson four years ago and has continued in the employ of the department since that time in other capacities.

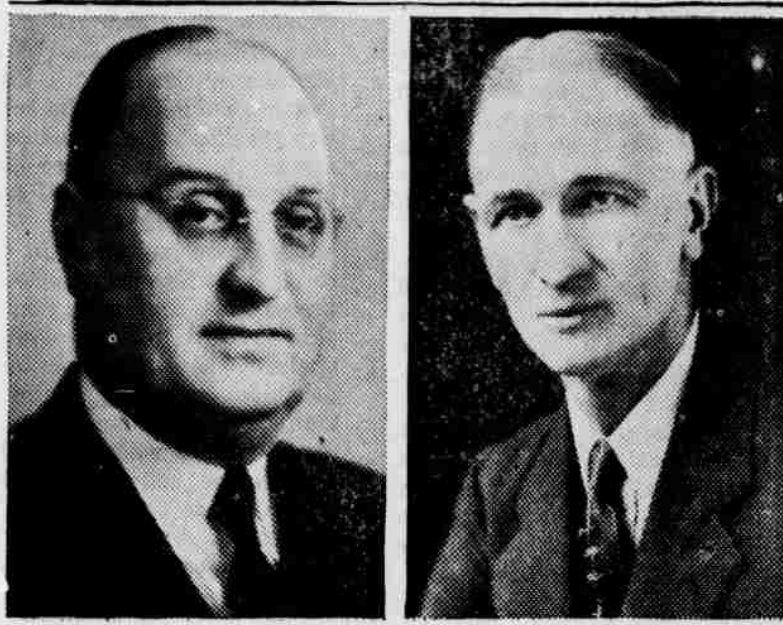
Arthur A. Rogers of Eugene took over his new duties as state superintendent of banks Friday, succeeding Mark Skinner, who has held that position for the past four years. Rogers, a republican, was formerly president of the First National bank at Eugene but more recently was connected with the Federal Land bank at Spokane.

Oregon national guardsmen will wind up their special seven days of field training this winter, on Friday, Saturday and Sunday of this week. The final field training period was originally set for January 5, 6 and 7, but was moved up to the earlier date so that the guardsmen will be able to draw their extra pay before Christmas.

The California border patrol about which Oregon motorists have been wont to complain a great deal in the past appear to really have been blessings in disguise according to Frank McKennon, chief of the Oregon department of agriculture division of plant industry. For instance only recently some Japanese beetle larvae which had stowed away in an Oregon car which had visited the state of New Jersey, were detected by the California inspectors and prevented from entering this state to do any damage. Numerous instances are cited by McKennon to illustrate the vigilance of the California inspectors in detecting pests of various kinds being carried into this state by Oregon motorists returning from a tour of the east or middle west.

New reciprocal agreements were entered into between automobile registration officials of Oregon, Washington and California meeting here last week. Under these agreements transient workers will be permitted to operate their cars in any of the coast states without obtaining new license plates so long as they are properly registered and licensed in their home state. This

Returned to Farm Credit Board



William A. Schoenfeld (left), dean of agriculture at Oregon State College, Corvallis, and Harvey R. Shoultes (right), Chehalis, Washington, dairyman and cooperative leader, begin new terms in January on the board of directors of the Farm Credit Administration of Spokane and its credit units. Both are members of the present board. Shoultes was elected by Federal Land Bank borrowers of Washington, Oregon, Idaho and Montana. Dean Schoenfeld was appointed by Governor F. F. Hill, of the FCA, to represent agriculture and the public on the board.

agreement is of particular importance to workers living near the state line whose work takes them into the adjoining state. Trucks registered and licensed in their home state will also be exempt from registration in the other states so long as they refrain from doing any intrastate business.

A 90-acre island in the lower Columbia river has just been "discovered" by the state land board. Of course the island has been there all the time and other residents of the state knew of its existence for it has been in cultivation for the past 20 years or more but the land board had no record of its existence and has never received any revenue from it. Now it will be leased and the rental turned into the common school fund.

Farmers are being urged by John Cooter, farm placement officer with the state employment service, to do as much of their work as possible during the slack winter months. The business revival, Cooter points out, is causing a shortage of help heretofore available for work on the farm.

Forest Grove, Heppner and Stayton are among the Oregon towns which have enjoyed a reduction in fire insurance rates during the past year, according to Hugh Earls, state insurance commissioner. The rate reductions followed reductions in losses from fires in the several cities, Earle explained.

Salaries earned by state officials and employees will be subject to the federal income tax for the first time in history. A recent ruling of the United States supreme court opened the way not only to the taxation of state employees by the federal government but of the taxation of federal employees by state governments. Department heads are now engaged in making out payrolls for submission to the federal income tax department.

State Insurance Commissioner Earle has refused to license between 70 and 80 local dealers of the General Motors corporation as insurance agents on the ground that their principal business would consist of the insurance of their own property. The automobile dealers sought licenses as agents of the Motor Insurance corporation, a subsidiary of General Motors, organized for the purpose of insuring new automobiles sold by General Motors dealers. Under the proposed plan the automobile dealers were to write the insurance at so-called board rates but were to keep the commissions themselves. The State Association of Insurance agents and a number of independent agents filed protests against the granting of the applications.

A move is on foot here to persuade Governor Sprague to declare the Saturdays immediately preceding Christmas and New Years as legal holidays. Inasmuch as these two holidays fall on Monday this year the plan would provide a three-day holiday. Workers in public offices and banks would be the principal

beneficiaries of such a plan. Inasmuch as state and county employees already have Saturday afternoons off it is doubtful if the governor will accede to the request.

There were more fatal accidents on Thursday than on any other day of the week during the month of October, according to figures compiled by the state safety division. Of the 20 fatal accidents during the month, seven were on Thursdays. Sundays saw five fatal accidents with two on Saturdays.

CHRISTMAS--- in the Home

Make it More Cheerful
and Brighter

WITH PAINT

It probably won't take much paint, and you'll enjoy the work once you get started, but it's certain that after you finish you'll exclaim: "What a difference a little paint makes!"—in making the woodwork shine.

MIRRORS, TOO

—A brand new supply of latest designs, to help reflect the cheerfulness in the home this Christmas.

TUM-A-LUM LUMBER COMPANY

Phone 912

Heppner Gazette Times for Everything in Printing

MORE FEATURES BETTER FEATURES

tell you to "BUY CHEVROLET!"

*"Chevrolet's
FIRST Again!"*



The Special De Luxe Sport Sedan, \$802*

It's the only low-priced car with
all these fine car features!

<p>NEW "ROYAL CLIPPER" STYLING</p>	<p>NEW EXCLUSIVE VACUUM-POWER SHIFT</p>	<p>"THE LONGEST OF THE LOT" From front of grille to rear of body (181 inches) Chevrolet for 1940 is the longest of all lowest-priced cars!</p>
<p>PERFECTED HYDRAULIC BRAKES</p>	<p>NEW SEALED BEAM HEADLIGHTS</p>	<p>SUPER-SILENT VALVE-IN-HEAD ENGINE</p>
<p>NEW FULL-VISION BODIES BY FISHER</p>		

CHEVROLET Everybody knows, it takes fine features to make fine cars! . . . And Chevrolet for '40 is the only car in the low-price field that has all the fine car features pictured at the left! . . . Small wonder, then, that it is also out-selling all other new cars for '40. . . . Eye it, try it, buy it, and you'll be thoroughly convinced that "Chevrolet's FIRST Again!"

85-H.P. VALVE-IN-HEAD SIX AND UP, *at Flint, Michigan. Transportation based on rail rates, state and local taxes (if any), optional equipment and accessories—extra. Prices subject to change without notice. Bumper guards—extra on Master 85 Series.

Eye It .. Try It .. Buy It! **\$659**

Chevrolts are Shipped to Dealers—NOT DRIVEN OVERLAND!

FERGUSON MOTOR COMPANY

Heppner

Oregon