

Good Showers Make Deer Open Season Inviting Next Week

Hunters Preparing for Start; Antlered Herd Said Plentiful

Advent of the 30-day deer hunting season next Wednesday was made more glowing than ever to sportsmen by good rains this week. Two heavy showers, one Monday and another yesterday evening, arrived in time to lessen the fire hazard in the woods, to toughen the dried twigs—the snap of which from the nimrod's foot might otherwise prematurely alarm the antlered prize—and to start growth of the new grass.

(More pleased than hunters, if possible, are the stockmen who have been pining for rain to start the grass on ranges in the lower country. Wheat growers, too, are pleased. They have been waiting for sufficient moisture before starting to plant next year's crop.)

Lively preparations are being made in local sporting circles to take advantage of the first day's hunt, with reports indicating the usual large number of outside hunters will be on hand to seek the county's prize mule tails.

That the forest denizens are plentiful this year is indicated by many pre-season reports. Forest lookouts, herders and forest visitors generally are authority for reports that more deer than ever have been seen throughout the summer and early fall.

New Area Opened For Antlerless Deer

The state game commission at its meeting in July ordered the sale of 500 special permits to take antlerless deer during the regular open season for buck deer September 20 to October 25, in the area immediately adjacent to the Mule Deer game reserve in Klamath and Lake counties. Approximately 100 tags have been sold so far and the demand for tags is expected to increase as the season approaches. Anyone desiring a tag can secure one by forwarding to the office of the game commission in Portland the fee of five dollars together with information as to the number and kind of hunting license owned. The commission is compelled, according to law, to issue the tags in the order that the applications are received and after 500 tags have been sold, no more will be issued.

A complete description and map of the area open to antlerless deer hunting can be found in the official synopsis of the 1939 hunting regulations, copies of which are now available at leading sporting goods and hardware stores.

Hunters carrying antlerless deer permits for this area will be required to check in and out of any one of the following stations: Lakeview, Paisley and Dairy.

Autumn Travel Shows Increase

Heavy increase in autumn motor travel is reported by the Oregon State Motor association.

The trend is indicated in daily gasoline sales and reports of hotels and auto camps and cottages, an association bulletin states.

As a public service to the late travelers ferry service between Port Angeles and Victoria will be twice instead of once daily until September 30th. Intrastate travel also is reported high because of return of eastern sojourners and moderation in forest fires.

Two pedestrians who walked into the side of moving cars lost their lives in these accidents in Oregon during the first half of 1939, statistics compiled by the state safety division revealed. During the same period in 1938 there were five such fatalities.

Senator Taft Slated for Oregon Visit

Cleveland, O., Sept. 6.—Senator Robert A. Taft will visit Portland on Thursday and Friday, Sept. 14 and 15, according to present plans. Starting from Cleveland last Monday, the Senator and Mrs. Taft plan to go to the San Francisco fair and drive to the more important scenic regions of the West Coast states, unless the war situation makes it necessary for them to return to Washington.

Several meetings will be held in Portland to introduce the Ohio senator to prominent Oregon republicans. On their westward route, the Tafts are scheduled to arrive in Spokane on Sunday, Sept. 10, where they will be entertained at a luncheon meeting. Senator Taft will visit the Yakima project.

CALL FOR WARRANTS

Outstanding warrants of School District No. 1, Morrow County, Oregon, numbered 5517 to 5554, inclusive, will be paid on presentation to the district clerk. Interest on said warrants ceases September 15, 1939. EVA BALDWIN, Clerk, School District No. 1, Heppner, Oregon.

RAIN PRECAUTION

With the rainy season not far distant, the Oregon State Motor association suggests that motorists should check their brakes, and make sure that their tires are nonskid—wise precautions against accidents.

C. W. Melville was transacting business in the city Tuesday from the farm in the Alpine district.

At Heppner CHURCHES

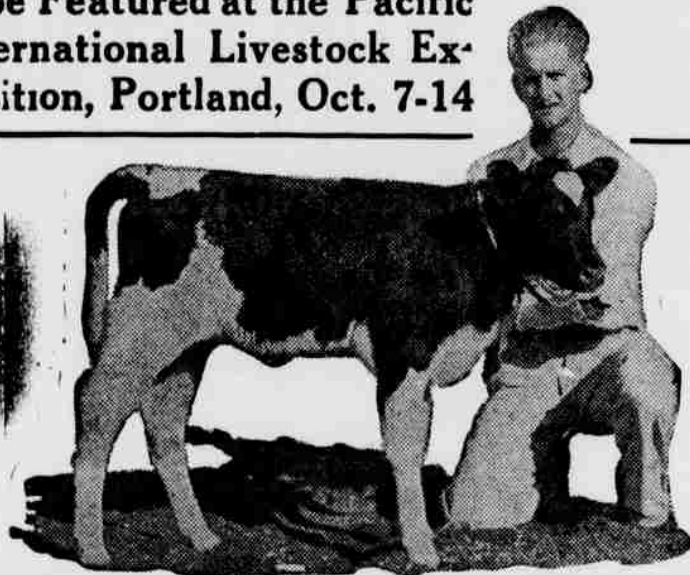
CHURCH OF CHRIST
Martin B. Clark, Pastor
9:45 Bible School
11:00 Communion and Preaching
7:00 Christian Endeavor
8:00 Evening Church Service
7:30 P. M. Wednesday Choir Practice
7:30 P. M. Thursday Prayer Meeting

METHODIST CHURCH
REV. R. C. YOUNG, Pastor
Sunday: Bible School 9:45 A. M.
Worship Service 11:00 A. M.
Epworth League 7:00 P. M.
Evening Worship 8:00 P. M.
Tuesday: Boys' Club 7:00 P. M.
2nd Tuesday, Missionary Meeting 2:30 P. M.
Wednesday: Choir Practice 7:30 P. M.
1st Wednesday, Ladies Aid Business and Social Meeting 2:30 P. M.
All other Wednesdays: Sewing Group meets.
Thursday: Prayer Meeting 7:30 P. M.

ALL SAINTS' CHURCH.
Morning service announced for next Sunday has been postponed until Sunday, Sept. 24.

CARD OF THANKS
We wish to extend our heartfelt thanks and appreciation for the many acts of kindness, helpfulness, and floral offerings given by our friends and neighbors at the time of our bereavement.
Mrs. Laura B. Adams,
Mr. and Mrs. Earl Rau,
Mr. and Mrs. B. L. Adams,
Mr. and Mrs. Floyd N. Adams.

National Dairy Show Exhibit to be Featured at the Pacific International Livestock Exposition, Portland, Oct. 7-14



This year for the first time in history, the National Dairy Show comes to the great Northwest where it will be the outstanding feature of livestock exhibits at the Pacific International Livestock Exposition for 8 days before proceeding to the Golden Gate Exposition.

Starting from Springfield, Massachusetts, the 1939 cow cavalcade will participate in the Dairy Cattle congress at Waterloo, Iowa, thence across the Northern states, via Northern Pacific Railway, increasing in size as the big special train travels toward Portland. Grand Champion Dairy Cows and other prize stock from Eastern States and Mid-west will compete against the best produced in the Northwest and Canada, presenting in all, the finest breeding stock and dairy cattle, on the continent.

More than \$14,000 in premiums, will be awarded to winners in six dairy breeds at the Pacific International . . . and the grand total of awards to breeders participating in the 6,000 mile "circuit of champions" and to other exhibitors showing at Waterloo, Portland and San Francisco will aggregate \$98,000, which includes appropriations from several breed societies. Competing breeds will be Ayrshires, Brown Swiss, Guernseys, Holsteins, Jerseys, and Milking Shorthorns.

The National Dairy Show Exhibit at the Pacific International added to the usual huge livestock exhibits is expected to create the greatest amount of interest ever shown in connection with this annual event. The special train will also bring Draft Horses, Show Horses, Beef Cattle, Swine and Sheep to add to exhibits from the Northwest and Canada.

4-H Competition for "Plummer Trophy" To Be Keen This Year
4-H Club teams from 6 western states will again compete in interesting demonstrations of their various projects at the Pacific International Livestock Exposition Oct. 7 to 14. The coveted trophy awarded annually to the winning team is a large American flag, made of silk.

Final award to winners will be based on the average number of points won by both boys and girls of the same team, rather than the total number of points gained. Teams competing in the 6-state contests will receive from the exposition 50 per cent of their transportation costs and other expenses up to the following amounts per state:

Montana, \$100; Utah, \$150; Nevada, \$100; Idaho, \$75; Washington, \$50, and Oregon, \$25. The allowance is determined by the distance teams must travel to the exposition. Amounts allowed are based on two teams of two members each from each state.

"4-H Club demonstrations have proven intensely interesting to the public in general and of great practical value to club members," stated Mr. Plummer. "It presents an opportunity for boys and girls to display their own achievements and gain knowledge and experience from the demonstrations and work of others."

In addition to the exhibits of Livestock, Dairy and Land Products, the 1939 Exposition will feature the usual fast action Rodeo, brilliant Horse Show and, as a spectacular added attraction, the "Musical Ride" of the Royal Canadian Mounted Police, numbering 35 men and horses.

SAFAWAY

6 day September sale

• Prices are for September 15-21

FLOUR Harvest Blossom Sk. \$1.59
49 Lb. Sacks
Kitchen Craft Sk. \$1.69

COFFEE Airway 2 Lbs. 39c
Nob Hill 3 Lbs. 39c

VIENNA SAUSAGE Cudhay's reg. size 2 TINS 15c

CRACKERS Krispy, salty 2 Lb. Box 25c

CLABBOR GIRL Baking Powder 2 lb. tin 20c

GRAPEFRUIT Juice Town House 46 oz. tin 17c

MILK
Tall Federal
CASE \$3.09
12 Tins 79c

COFFEE
Edwards
2 lb. tin 45c
4 lb. tin 85c

Bleachrite
Best bleacher—works to perfection
1/2 gal. jug
21c

LUX
FLAKES
Large Pkg.
21c

Mothers Oats, pkg. 28c
Lge. Pkg. Premium

Cornmeal, 9 lb. sk. 29c
Yellow or white

Grapefruit tin 10c
No. 2 tin Highway

Jellwell 2 pkgs. 09c
Favorite Dessert

Chocolates .. 2 lbs. 25c
Old Fashioned

Pepper per tin 5c
2 oz. Schillings

Marshmallows .. lb. 10c
Fluffiest of all

Devil Meat, 3 tins 10c
Cudhay's 1/4 tins

Supurb Soap 2 pkg. 37c
Large package granulated soap

Corn 3 tins 25c
Country Kist

Peas 3 tins 27c
No. 2 tins Highway

String Beans, 3 tins 27c
No. 2 tins Blue Lake

• Garden Fresh Produce

FRIDAY-SATURDAY ONLY

SWEET SPUDS, No. 1s .. 5 lbs. 29c

CABBAGE, firm and crisp lb. 3c

BUNCH VEGETABLES 2 bu. 5c

SQUASH, Marblehead lb. 2c

ONIONS No. 1s 10 lb. mesh bag 19c

POTATOES Netted Gems 50 lbs. 69c

CURED MEATS

BACON, Swift's Breakfast lb. 27c
Whole or Half

LARD, Sheaf pure lard, 8 lb pail \$1.09

LUNCH MEAT, Palace Per lb. 25c

JULIA WRIGHT'S BREAD

1 LB. LOAF **10c** LGE. 1 1/2 LB. **14c**