

### SOIL WORK MAY INCLUDE LENA

**Hanna Cites Value of Work at Grange Meeting; Grass and Alfalfa Mixtures Promising**

"The improved condition of my ranch will show better than I can tell you men the value of the work done by the soil conservation service," John Hanna, Heppner rancher, told farmers at a recent meeting at the Lena grange.

The meeting was called by Ed. Hughes for the purpose of interesting farmers in that area in requesting assistance from the soil conservation service through its local CCC camp. If sufficient interest is shown it is probable that the service may extend its erosion control work project to include the area, it was stated.

Jack Hynd of Cecil and R. A.

Thompson, Balm Fork rancher, with L. H. Guild of the local soil conservation camp visited the Hanna ranch recently to examine plantings of tall meadow oatgrass with alfalfa and smooth bromegrass with alfalfa.

Both ranchers were enthusiastic over the possibilities of smooth bromegrass seeded with alfalfa in increasing hay production.

Grass and legume mixtures are being tried on irrigated hay lands in this area, Guild stated, to check soil loss, reduce invasion of weeds, improve the quality of the hay crop and increase production. Increased hay production is vital in prolonging spring feeding and thereby automatically reducing early spring grazing of range lands with resultant erosion damage due to destruction of the grass cover, he pointed out.

Mr. and Mrs. Louis Marquardt of Lexington were visitors in this city Tuesday.

### At Heppner ♦ ♦ CHURCHES

#### CHURCH OF CHRIST

ALVIN KLEINFELDT, Pastor  
"I have found that business men, on the whole, are religious. A survey shows that large numbers read the Scriptures. The bigger the business man, the more religious he is. Let me say right here that a larger use of the Bible by business men of today will contribute a steady quality to business life."—Roger Babson.

Morning sermon "The Divine Inspiration of the Bible."  
The evening union meeting will be held at the Methodist church.

Bible School ..... 9:45 a. m.  
Morning Service ..... 11:00 a. m.  
C. E. Society ..... 6:30 p. m.  
Evening Services ..... 7:30 p. m.  
Choir Practice, Wednesday ..... 7:30 p. m.  
Midweek Service, Thursday ..... 7:30 p. m.

#### METHODIST CHURCH

REV. R. C. YOUNG, Pastor  
Sunday: Bible School ..... 9:45 A. M.  
Worship Service ..... 11:00 A. M.  
Epworth League ..... 7:00 P. M.  
Evening Worship ..... 8:00 P. M.  
Tuesday: Boys' Club ..... 7:00 P. M.  
2nd Tuesday, Missionary Meeting ..... 2:30 P. M.  
Wednesday: Choir Practice ..... 7:30 P. M.  
1st Wednesday, Ladies Aid Business and Social Meeting ..... 2:30 P. M.  
All other Wednesdays Sewing Group meets.  
Thursday: Prayer Meeting ..... 7:30 P. M.

#### THE ASSEMBLY OF GOD

"K" and Elder Sts., Rev. E. D. Greeley, pastor.

Evangelist J. Horace Williams of Houston, Texas, will be present on Thursday evening, beginning a series of revival services, nightly. The singular and inspiring ministry of Rev. Williams will be appreciated by all Christian people. We are opening these services to the public for the good of all.

Next Wednesday evening Rev. J. A. Princic, recently returned from the Congo via Egypt will present his stereoscopic slides of his travels among the pigmy, cannibals and witch doctors of the "Dark Continent." Remember these dates and come.

### Bulletin Shows Expanded Use of Barley Possible

"Let's consider barley."  
This, in effect, is the invitation extended to Oregon farmers through the publication of a new OSC experiment station bulletin just issued entitled, "Barley Production in Oregon." Written by a group of experiment station workers, it not only records recent experimental

findings but also discusses cultural practices for all sections of the state.

With wheat seeding being strictly limited for those who wish to comply with the 1939 AAA program, interest in other grains for hay and feed purposes is being increased. The new bulletin points out that barley makes an excellent hay crop which, if properly handled, compares favorably with wheat and oat hays in nutritive value and palatability.

While beardless barleys such as Union beardless and Meloy are recommended for hay, certain bearded types such as Hannchen and some smooth awned types make excellent quality hay if cut at the right time and handled properly, the bulletin points out. Grown with field peas where moisture is available, barley gives a heavy yield of hay which compares favorably with clover or alfalfa in feeding value.

Use of barley is also recommended as a nurse crop, for feed grain—the most common use—as green

manure or cover crops and as a cash crop to be sold for malting purposes. Varieties best suited for these various uses and cultural practices for each are discussed in the bulletin.

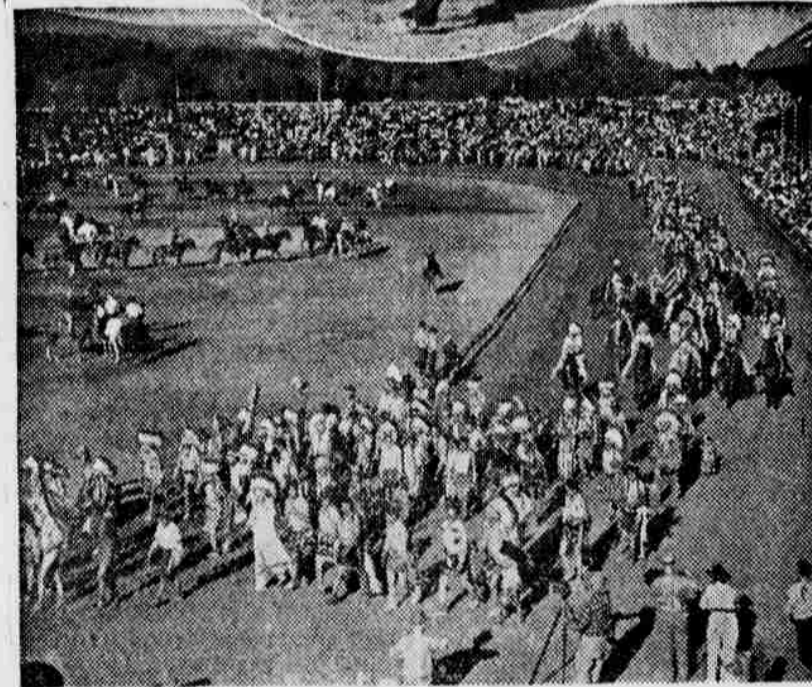
Most promising new variety discussed in the bulletin is the new winter hardy Santiam developed at the central station at Corvallis. It has been found fully winter hardy for western Oregon conditions and has outyielded all other suitable winter varieties. Limited amounts are being distributed this fall.

Total barley production in Oregon has remained fairly constant for the past 35 years, although major shifts in producing areas have occurred.

#### ATTEND DEDICATION

Vawter Parker, J. O. Turner and Wm. D. Campbell were local Masons attending dedication of the new Masonic hall at Condon by the grand lodge last Saturday evening. The lodge hall is in the upper story of the new city hall building.

### Ready for Pendleton Round-Up



Pendleton, Ore., Aug. 26.—The yip of the cowboy and the thud of the tom-tom sounds now as Pendleton, with banners flying and with its citizens in loud shirts and sombreros, gets all set for the 29th annual Round-Up, Sept. 15, 16, 17.

Purses of \$9000, as well as prize saddles and other trophies, are offered for bronco riding, steer bulldogging, calf and steer roping, pony express race, cowboys' and cowgirls' relay races, all world championship events, and for stage coach race, squaw race, amateur bucking, free-for-all Indian race, cowgirls' pony race, Indian relay and Round-Up derby. Non-competitive exhibition events are riding bucking bulls and Brahma steers, trick riding and fancy roping.

Daily, at the grounds, is held the great cowboy, cowgirl and Indian parade; the Westward Ho! parade is a Friday event, at 10 a. m., on Pendleton streets. For night entertainment the Round-Up provides the far-famed Happy Canyon pageant, which, like the Round-Up is a community show.

At top, lovely Nina Minenock, winner of the 1937 Round-Up American Beauty contest for full blood Indians; below, a cowboy tries his luck on a Round-Up buck, just after wranglers (at right) release the blindfold; and third, a section of the 2,000 Indians who camp on the grounds and who appear in the parades.

### OYSTERS



### SHELL FISH

### Crabs, Shrimp

give zest to our

### Fall and Winter MENUS

A good meal anytime at

### Elkhorn Restaurant

ED CHINN, Prop.



### SLEEPY HOLLOW SYRUP

Marvelous on hot cakes and waffles. It has the old-time maple flavor folks liked in colonial days.

PINT JUG..... 19c

QUART JUG..... 35c

PRICES IN THIS AD SEPT. 16-20 INCL

#### OYSTERS

Bullis Brand 5 oz. tins  
Each .. 10c

#### Str. Beans

Titan Brand Cut stringless No. 2 ins  
6 Tins 53c

#### CORN

17 oz. Cream style  
6 Tins 53c

#### FLOUR SALE

HARVEST BLOSSOM Bbl. \$4.49 Sk. \$1.15

KITCHEN CRAFT Bbl. \$5.09 Sk. \$1.29

SALMON, 3 tall tins 35c  
Alaska pink

WAX PAPER ... 40 ft. 7c  
With Cutter 125 ft. 15c

GRAPEFRUIT .. 2 for 25c  
No. 2 tins Floridan

DRESSING 8 oz bottle 12c  
Aristocrat French

PUFF WHEAT Superior Brand LGE. 8 OZ. PKG. 10c  
QUAKER GIANT, 7 oz. .... 2 PKGS. 27c

HONEY Bradshaw's finest quality 5 LB. PAIL 49c

LARD Armour's Texturated 4 LB. CTN. 59c 8 LB. PAIL \$1.15

TOMATOES No. 2 1/2 tins with puree TIN 10c

JELL WELL The Nation's favorite dessert 3 PKGS. 13c

#### FRESH PRODUCE

Friday-Saturday Only  
ORANGES, Sunkist med. .... Doz. 20c  
SWEET POTATOES ..... 5 Lbs. 29c  
GRAPES, Concord ..... 22 Lb. Lug 85c  
CAULIFLOWER ..... Jumbo head 15c  
CELERY, Jumbos ..... 2 Bunches 15c

#### MILK

Carnation, Maximum, Mt. Vernon  
12 Tins 79c

#### COFFEE

Airway ..... 3 Lbs. 39c  
Nob Hill ..... 2 Lbs. 39c  
Edwards ... 2 Lb. Tin 45c

#### SUGAR

Extra Fine 100 LBS.  
\$5.29

# SAFeway

MONEY-SAVING CASH GROCER