

Morrow County People Are Enterprising, Progressive

AN OPPORTUNITY TO BUY A GOOD FARM

Owing to the necessity of liquidating an estate the following improved farm bargain is being put on the market. Here is an unusually good bargain, one seldom offered in this country. When writing please mention Heppner Gazette Times.

John Hughes ranch situated on Willow creek, four miles northwest of Heppner, the county seat of Morrow county, Oregon, consisting of 70 acres alfalfa land, 485 acres wheat land, 1206 acres of grazing land, all under good fence. Both the Oregon-Washington railway and Oregon-Washington highway pass close by the home place. Good barn and numerous outhouses. The creek is available for irrigation, but from March 1 to September 30 there is a special water right of 83-100 cubic feet per second, on record at state capitol. High school at Heppner and district school 3-4 mile from ranch house.

On account of the railroad and highway passing through, it makes it possible to divide it into two separate ranches if desired. There are at present 275 acres of wheat, looking fine; about 240 acres in summer fallow. Taxes have always been paid on time; no incumbrances; abstract would be short and clear.

This ranch is located in the center of the celebrated eastern Oregon wheat belt, just half way between Pendleton and The Dalles. Positively the best climate in the United States is right here. This assertion will stand investigation. And this ranch is considered one of the good ranches on Willow creek. It has been farmed by the late owner since 1880 and he always

kept it up and was proud of having it in ship-shape condition. Being so close to Heppner gives the advantages of schools, churches and places of amusement. There are about 50 acres in alfalfa at present, but over 70 could be put in. It is seldom that a ranch having so many desirable features is upon the market. There is also for sale a good residence in Heppner, 8 room house on lot 100 by 100 feet, laid out in ornamental trees and lawn. If interested write for full particulars to Arthur Smith, trustee, Heppner, Oregon.

BUSINESS CONDITIONS ALIVE ALL PARTS MORROW COUNTY

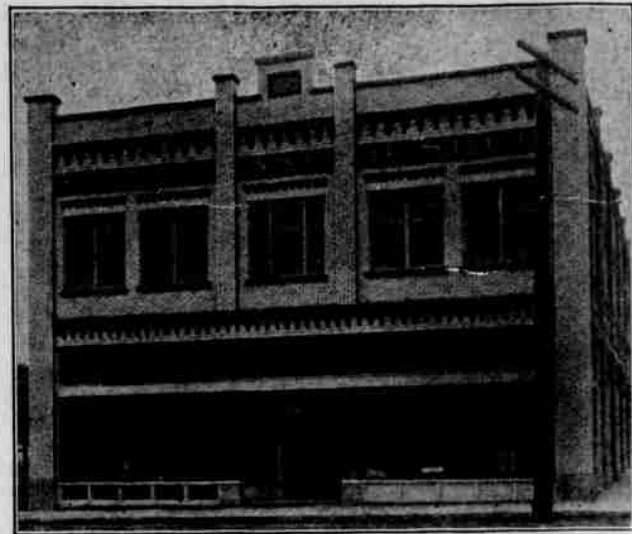
And to you, the sensible and conservative business man, this issue must especially appeal. Look thru these pages and there is a story that will interest you that it tells, not in so many words but in quite another way that is and must be truly impressive. You will see the display advertisements of our many retail establishments, each using good sized display space for which they pay more than double our regular rate. This advertising space is and will be in your estimation the best barometer of business conditions. Our mercantile establishments are prosperous and behind this prosperity is the one big factor that makes this country, successful farmers.

The farmer is the backbone of the nation and the city and the individual succeeds only in as much as the farmer, the producer, succeeds.

In Morrow county we do not record failures. While progress in the early development days was slow, each year has recorded progress and this progress will continue from now on faster than ever.

Morrow county invites you to get in on the ground floor.

GILLIAM & BISBEE BUILDING IMPOSING



GILLIAM & BISBEE, THE BIG STORE OF MORROW COUNTY

The above building, erected in 1919, is one of, if not the finest business structures in Morrow county, and stands as a monument to the progressive and enterprising spirit of Frank Gilliam and L. E. Bisbee. It reflects the confidence of these two in this country.

The firm of Gilliam and Bisbee, dealers in hardware, light and heavy, building materials and farm implements, is well and favorably known throughout the whole district and enjoys the confidence of the people of the whole county. It is really one of the pioneer business institutions of the county and dates back to the very early days when Heppner was in its infancy, but when the hardy pioneers (Frank Gilliam, the senior member of the firm, was one of these) saw in prospect the great future awaiting this district and laid the foundation.

Frank Gilliam settled here with other venturesome spirits as early as 1870. His first interests included cattle and sheep. By 1887 Heppner and this country had amassed quite a population. Gilliam, looking to the future, at this time started a general store on a small scale. Heppner grew and the business grew. Their stocks and operations were enlarged. A partner, Coffee, was taken in and the business conducted for some time under the name of Coffee and Gilliam. Later T. H. Bisbee, father of the present partner, bought Coffee's interests and the firm name was changed to Gilliam and Bisbee. The elder Bisbee died in 1902, the son and present partner, L. E. Bisbee taking over his father's interests. The

growth and continued prosperity of this firm is all the more remarkable when one considers the setbacks they have encountered and overcome. It has not always been a bed of roses. True they have grown and prospered with the growth of the country but had to overcome many obstacles. In 1903 they suffered great loss through a flood which laid the town in waste. Having rebuilt, they were met in 1918 with a devastating fire which again laid their warehouse in ruin.

But such was their confidence that from the ashes there was soon to arise a bigger, greater and finer building and a bigger and better stocked business building. The present building, seen above, was erected in 1919 at a cost of approximately \$35,000, a real credit to Heppner and to its builders.

Frank Gilliam, the senior partner, has ever been prominently identified with the life, progress and development of this county. And he has ever been one of those who has shown his faith in the future by personally working for every constructive and progressive measure. His is the distinction of having been Morrow county's first county commissioner to which office he was appointed by the then Governor Moody. He has served three times as county treasurer, mayor of Heppner several terms and has been a member of our city council for 20 years. He is the present president of the First National bank, Morrow county's largest banking institution of which mention is made in other pages of this issue.

Gilliam and Bisbee do a large yearly business in their lines which include hardware, farm implements of all kinds, tools, stoves, ranges, paints, oils, builders supplies and kindred items. Patronize the home enterprises. They help to build your county.

PATTERSON & SON IS "REXALL" STORE

Heppner is proud of its many modern, up-to-date and busy retail establishments. To the casual visitor these are a good advertisement. Among the leaders and such a store as would do credit to our larger centers is the Patterson & Son retail drug establishment. It is modernly equipped throughout. It carries unusually large stocks of all manner of drugs, sundries, school supplies, novelties, magazines, periodicals, newspapers and kindred

lines. The well known "Rexall" products of the United Drug company are handled here. Particular care is taken in the prescription work, one of the main features of the business. A registered pharmacist is in charge. This store is most widely known throughout this section, having been in operation here under the same name and management for the past twenty-nine years. J. A. Patterson, the senior member, has been a resident here for the past 40 years. He ranks among those men who have seen the district grow and has helped to build it. Mr. Patterson came to Heppner when the branch railroad was be-

FROM THE PAGES OF YESTERDAY



Bird's Eye View of Heppner in the Early Days

ing built. In fact was one of the first locomotive engineers to pull a train over it and served in this capacity for 15 years. He has made a success of his various operations in Morrow county and is a man who has ever shown great confidence in this country.

WE WANT MORE PEOPLE. Our claims to continued prosperity are based on solid facts. Here the real estate speculation idea plays no part. The plain fact is

that we have a rich agricultural empire that is now well developed and of tried and proved worth. No experimenting. The successes achieved by others speak for themselves. Our lands are wonderfully productive in various crops. We need, however, more people. The many smaller farms can, and will, produce more under intensive, scientific farming methods. And it is the many smaller farmers, the many people on whom the prosperity of

our cities depend. Investigate Morrow county.

Consider and study Morrow county's communities as cities in which you would like to live and you will find them meeting your fondest expectations. A happy, prosperous, healthy and contented family. The Morrow county folks invite you to come and live among them.

The Blue mountains serve as Morrow county's water shed.

FOR 29 YEARS SERVING MORROW COUNTY PEOPLE

Patterson & Son

"The REXALL Store"

HEPPNER, OREGON

DRUGS, SUNDRIES
STATIONERY
SCHOOL SUPPLIES
BOOKS, MAGAZINES



Headquarters for

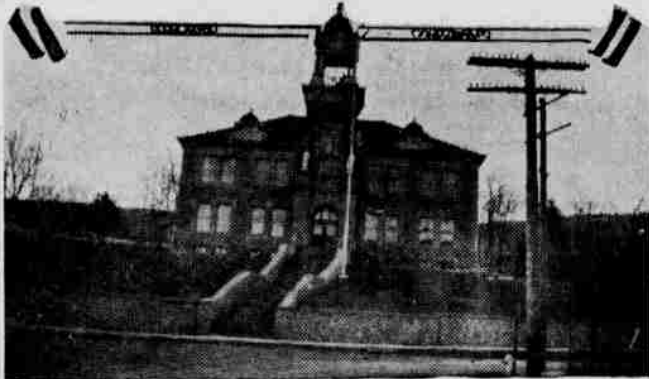
The Daily Newspapers

Prescriptions—Care and accuracy assured in your prescription work

SAVE with SAFETY
at your **Rexall** DRUGSTORE

Let Us Continue to Serve You

MORROW COUNTY COURT HOUSE



Erected in 1902 at a Cost of Approximately \$65,000

Your Family Store



Correct weights, honest measure, fair prices, reasonable profits, service and courtesy—

Quality Merchandise

On these principles we have built our business, and promising you to continue these policies we ask your patronage.

PHELPS GROCERY COMPANY

Heppner, Oregon

Since 1909 serving the trade. Since 1905 boosters for Heppner and Morrow County.

A Greater
HEPPNER
AHEAD

1928

A Greater
MORROW
COUNTY

Let us all join in 1928 to make Heppner and Morrow County bigger, more prosperous and a better place in which to live

The Big Store of Morrow County

Gilliam & Bisbee

HEPPNER, OREGON

HARDWARE, FARM IMPLEMENTS, BUILDERS' SUPPLIES, PAINTS, OILS, VARNISHES, STOVES, RANGES, SPORTING GOODS, GUNS, AMMUNITION

The firm of Gilliam & Bisbee has been serving Morrow County's people since 1887. Throughout these years the firm has grown and prospered, has weathered all the storms and has ever strived to be among the progressive leaders in working for development and progress for this section.

The business accorded this firm during the past year by the people of this section has been eminently satisfactory. We prosper only in as much as we serve. We trust that we may continue to serve our many friends and patrons. In hardware, we have it, will get it, or it is not made.

The personnel and firm of Gilliam & Bisbee ever have been and ever will be supporters of every movement having for its object the welfare, advancement and progress of Morrow County and its people.