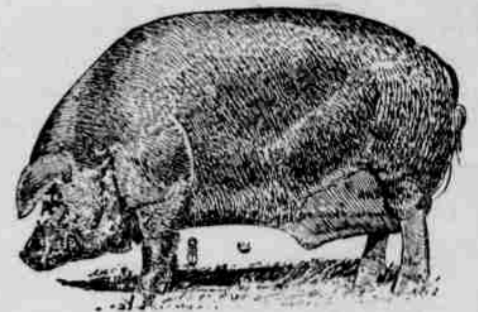


# Morrow County Oregon

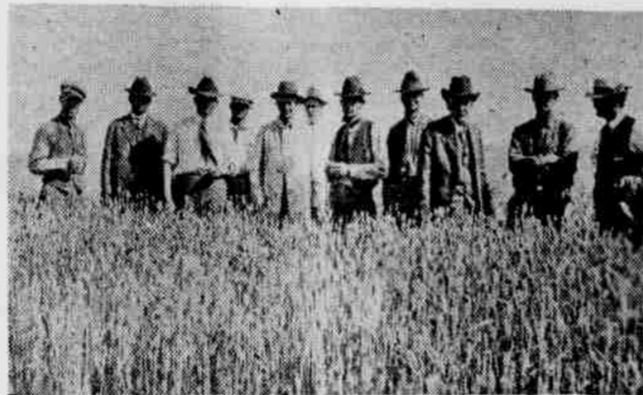


## Diversified Farming

An  
Opportunity  
for the  
Small Farmer  
the Man of  
Limited  
Means

Investigate  
Morrow County's  
Opportunities  
Today

Inspecting a Morrow County Wheat Field



Extension Service Experts and Farmers Studying Wheat Yields

Land adjoining the city of Heppner, bought in 1926 paid for itself in one crop. Land selling at from \$10.00 to \$20.00 per acre produces on an average of 20 bushels of wheat per acre. The average price for 1927 was \$1.15 per bushel.

With modern, improved farming methods, scientific, intelligent and diligent farming you can succeed on Morrow County lands with a smaller initial investment than is possible anywhere else in the United States.

In  
Morrow  
County You  
Do Not Need  
Such Large  
Acreage  
Nor Such  
Large Capital  
With Which  
to Start

## Welcome to Morrow County

General Farming, A Diversity of Crops, Pure Bred Dairy Stock  
Sheep, Hogs, Poultry, Truck Gardening



Lands May Be Bought Cheaper  
In Morrow County.  
Production Per Acre Is Higher.

## Big Cities Grow Where the Farmer Succeeds

This space contributed by the Heppner Luncheon Club and the Heppner Commercial Club in the interests of further progress and development of our agricultural resources.

**Write TODAY for Further Information**

ADDRESS SECRETARY HEPPNER COMMERCIAL CLUB, HEPPNER, OREGON

